



LANDMARK
COMMERCIAL
REAL ESTATE

HISTORICAL WINDFIELD GROCERY BUILDING FOR LEASE

701 E 2nd, Wichita, KS



[Rendering]

- **Located near 2nd and Mead St**
- **Available Space:** 5,000 - 9,808 sq. ft.
- **Building Size:** 38,652 sq. ft.
- **Lease Rate:** Please call for pricing
- **Lot Size:** 12,652 sq. ft.
- **Zoning:** Limited Industrial
- **Convenient parking to north, south and west**
- **Built in 1910**
- **Warehouse finish, concrete floor, brick walls and tall ceilings.**
- **Mixed uses!** Restaurant possible on ground level or lower level, rooftop restaurant and bar or amenity deck for office users, or office space for open collaboration.
- **Centrally located!** Across the street from Warren Theater Complex in the heart of Old Town.



For More Information:

Craig Simon, CCIM

Office: 316-262-2442

Fax: 316-262-2696

csimon@landmarkrealestate.net

• **www.landmarkrealestate.net** • **156 North Emporia Wichita, KS 67202** •

All information is deemed to be accurate, however, Broker makes no guarantee as to the accuracy of the terms and conditions represented herein.



Lucinda's
Todd Brian's
Brick Cafe

Pinot's Palette
Wichita City Arts

SABOR
YO-B Yogurt
and Burgers



Pixius
Communications

WAVE Indoor/
Outdoor Venue

2ND ST

CocoaDolce
Coffehouse
Manufacturing



Pumphouse

SITE

Old Town
Cigars



1ST ST



DOUGLAS AVE



Union
Station



EMPORIA

ST. FRANCIS

MEAD ST.

ROCK ISLAND ST.

WASHINGTON ST.

701 EAST 2ND NORTH

A REDEVELOPMENT OF THE HISTORIC:
WINFIELD WHOLESALE GROCERY BLDG.
OLD TOWN DISTRICT | WICHITA, KS

 **NSPJ**
ARCHITECTS^{PA}



PERSPECTIVE: INTERIOR CONCEPT

NTS

701 EAST 2ND NORTH

A REDEVELOPMENT OF THE HISTORIC:
WINFIELD WHOLESALE GROCERY BLDG.
OLD TOWN DISTRICT | WICHITA, KS

 **NSPJ**
ARCHITECTS^{PA}



PERSPECTIVE: INTERIOR CONCEPT

NTS

701 EAST 2ND NORTH

A REDEVELOPMENT OF THE HISTORIC:
WINFIELD WHOLESALE GROCERY BLDG.
OLD TOWN DISTRICT | WICHITA, KS

 **NSPJ**
ARCHITECTS^{PA}



PERSPECTIVE: INTERIOR CONCEPT

NTS

701 EAST 2ND NORTH

A REDEVELOPMENT OF THE HISTORIC:
WINFIELD WHOLESALE GROCERY BLDG.
OLD TOWN DISTRICT | WICHITA, KS



AERIAL: NORTHEAST CORNER

NTS

701 EAST 2ND NORTH

A REDEVELOPMENT OF THE HISTORIC:
WINFIELD WHOLESALE GROCERY BLDG.
OLD TOWN DISTRICT | WICHITA, KS

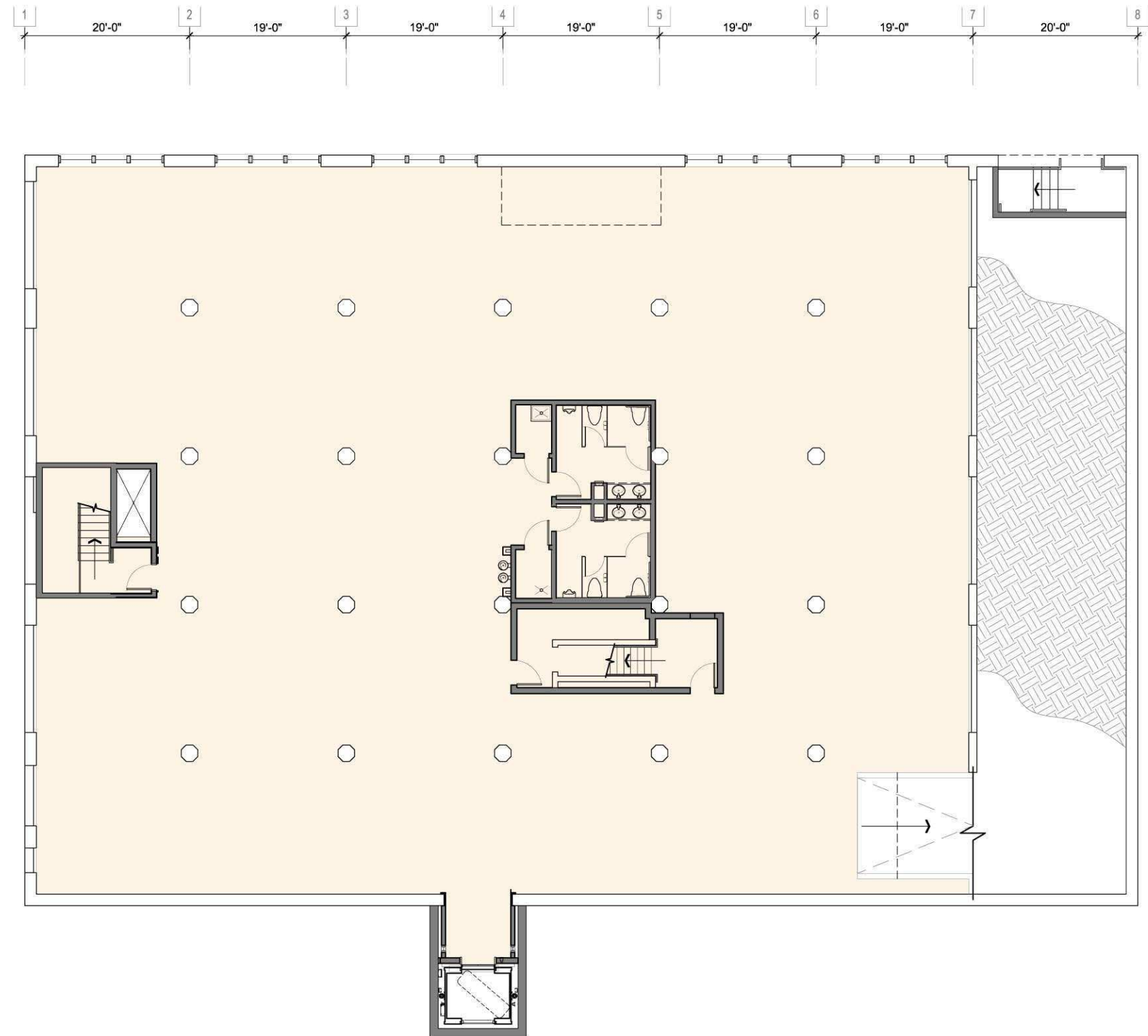
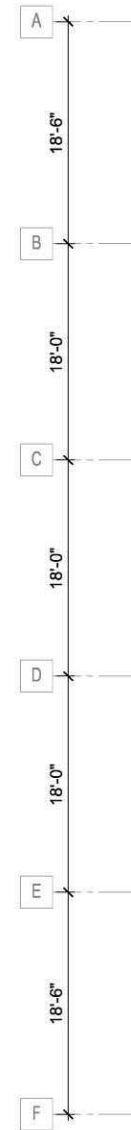


AERIAL: SOUTHEAST CORNER

NTS

701 EAST 2ND NORTH

A REDEVELOPMENT OF THE HISTORIC:
WINFIELD WHOLESALE GROCERY BLDG.
OLD TOWN DISTRICT | WICHITA, KS



LOWER LVL: OFFICE/RETAIL

1/16"= 1'-0"

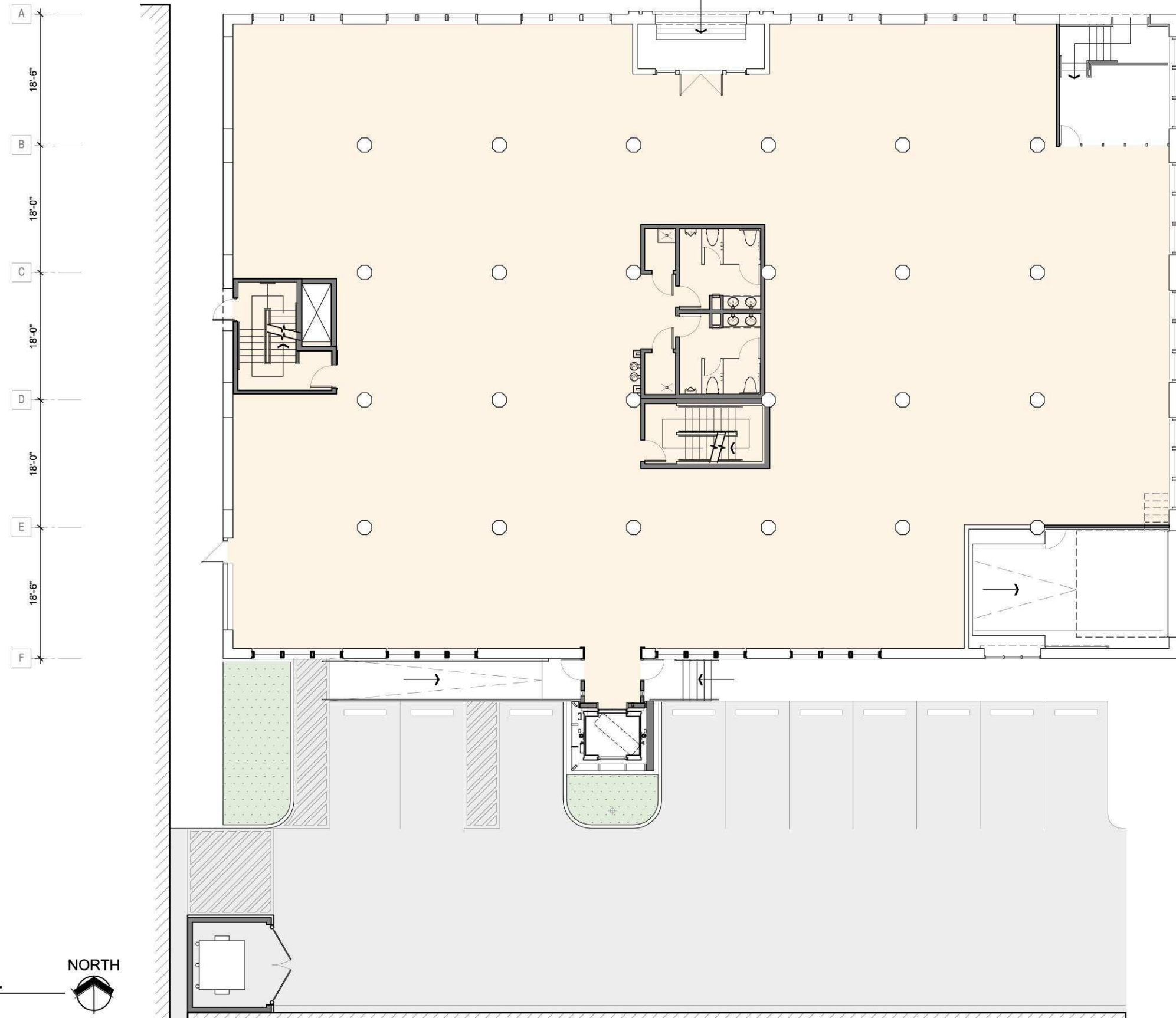


701 EAST 2ND NORTH

A REDEVELOPMENT OF THE HISTORIC:
WINFIELD WHOLESALE GROCERY BLDG.
OLD TOWN DISTRICT | WICHITA, KS

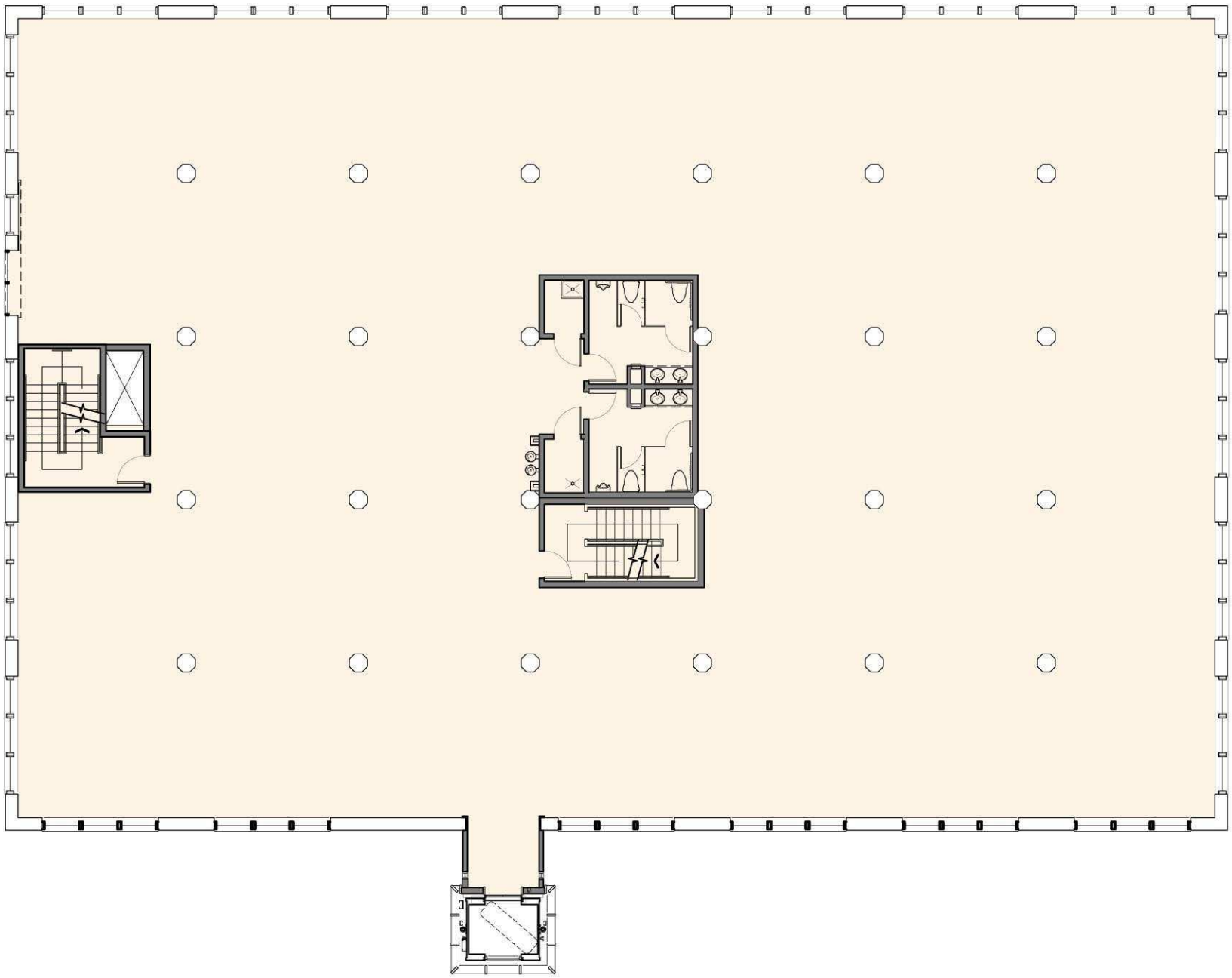
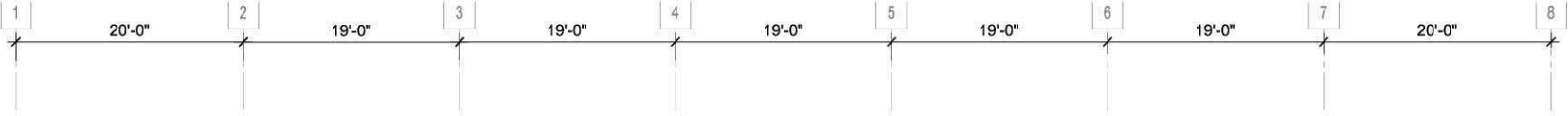
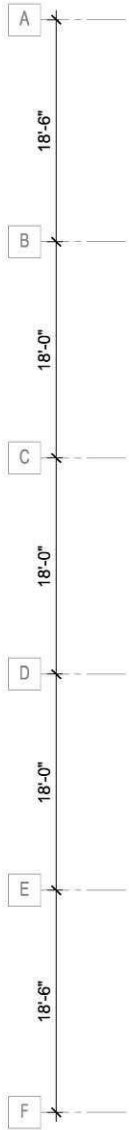


NSPJ
ARCHITECTS_{PA}



701 EAST 2ND NORTH

A REDEVELOPMENT OF THE HISTORIC:
WINFIELD WHOLESALE GROCERY BLDG.
OLD TOWN DISTRICT | WICHITA, KS



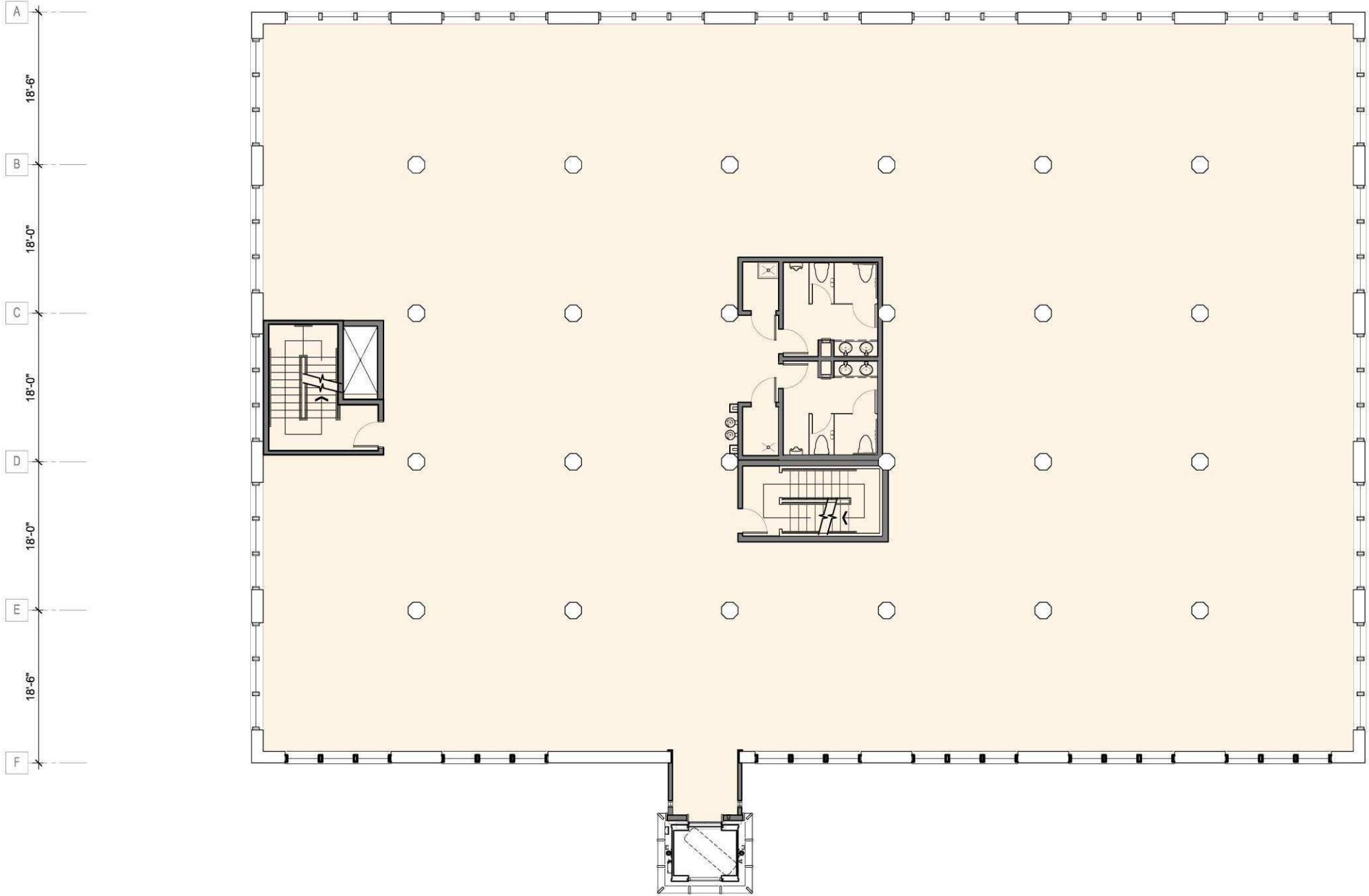
2ND FLR: OFFICE/RETAIL

1/16"= 1'-0"



701 EAST 2ND NORTH

A REDEVELOPMENT OF THE HISTORIC:
WINFIELD WHOLESALE GROCERY BLDG.
OLD TOWN DISTRICT | WICHITA, KS



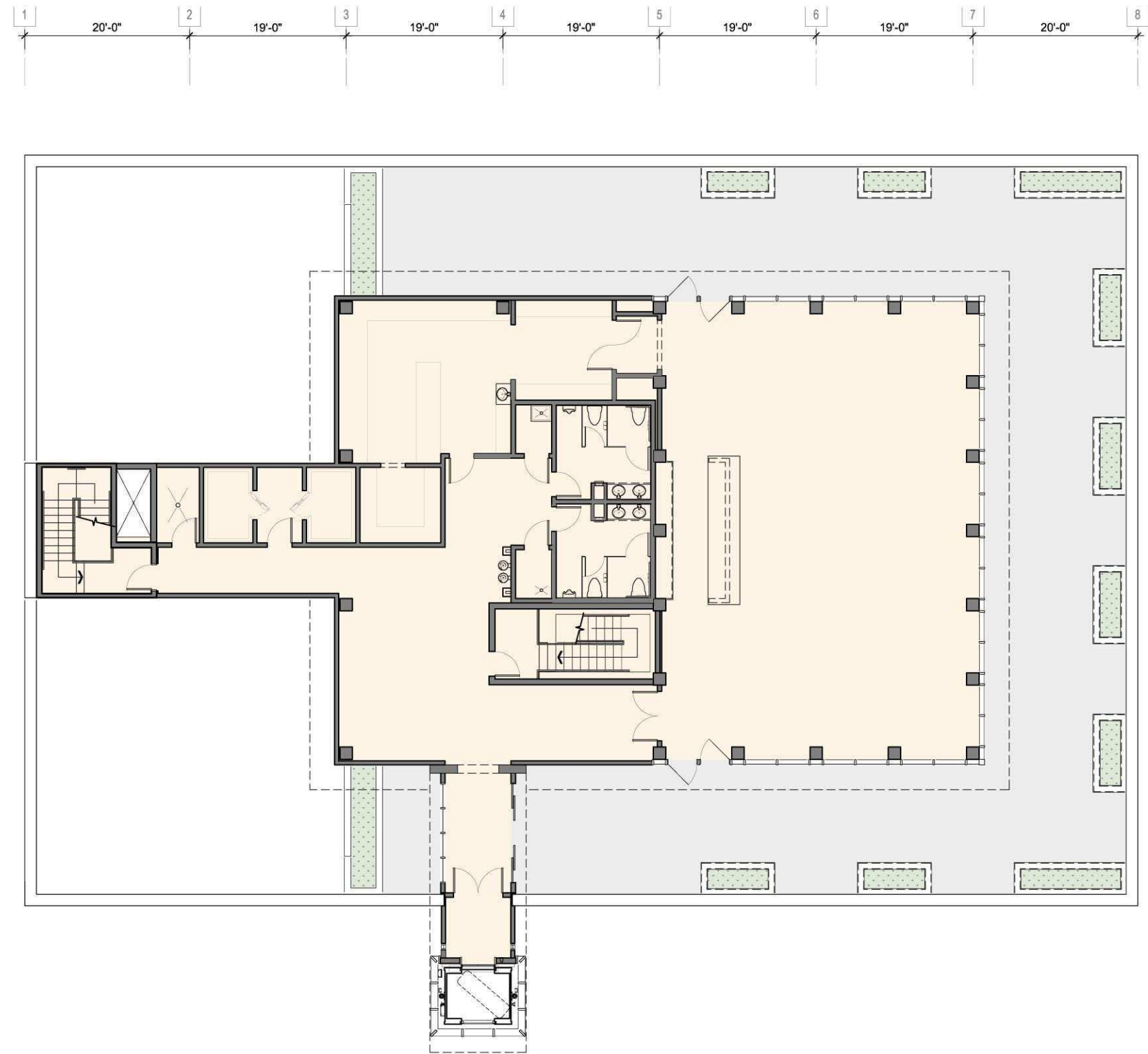
3RD FLR: OFFICE

1/16"= 1'-0"



701 EAST 2ND NORTH

A REDEVELOPMENT OF THE HISTORIC:
WINFIELD WHOLESALE GROCERY BLDG.
OLD TOWN DISTRICT | WICHITA, KS



ROOF TERRACE: *RESTAURANT*

1/16"= 1'-0"

