

West Longmont

1011 Dry Creek Drive
Longmont, CO 80503



11,600 SF

CHILDCARE, CHILDREN LEARNING CENTER, OR ADULT CARE
SUBLEASE SPACE AVAILABLE!




TRANSWESTERN[®]
Experience Extraordinary



For more information:

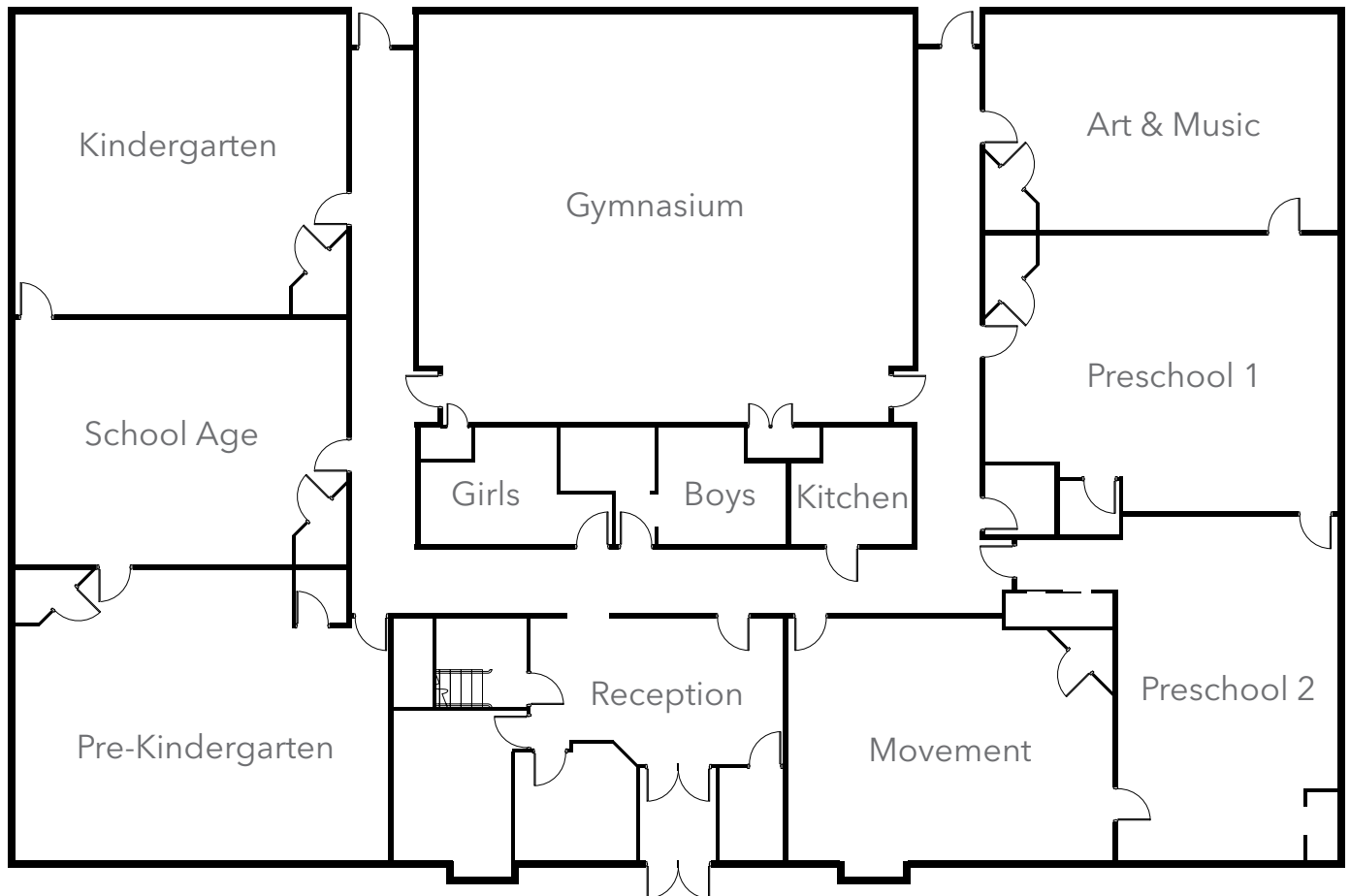
DAVID SHAPIRO
303.407.1466
david.shapiro@transwestern.com

TIM CONARRO
303.746.1490
tim@longmont-commercial-realestate.com

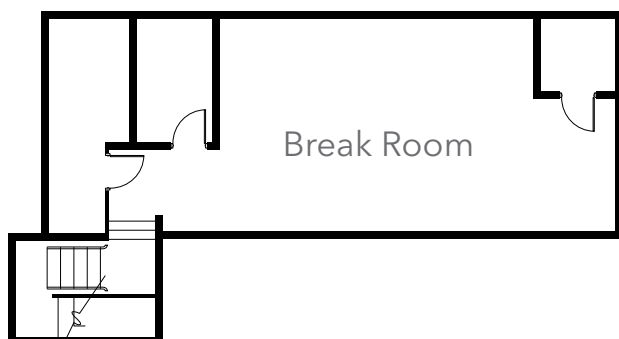
West Longmont

1011 Dry Creek Drive
Longmont, Co

First Floor



Second Floor



BUILDING FEATURES

Attractive outdoor playground

*Six-foot high cedar security
fence enclosing playground*

Surface parking

Sprinklers installed throughout

REDUCED RATE NOW

\$11.50 NNN

MOVEMENT STUDIO



RECEPTION



KITCHEN

SUBLEASE TERMS

SIZE	11,600 SF
RATE	\$11.50 NNN
TAXES	\$2.86 PSF (\$33,176)
NNN COSTS	Will vary based on user's requirement
TERM	Through 3/18/2020
FURNITURE	Negotiable
PARKING	40 surface spots
AVAILABILITY	Immediate

REDUCED

West Longmont

1011 Dry Creek Drive

For more information:

DAVID SHAPIRO

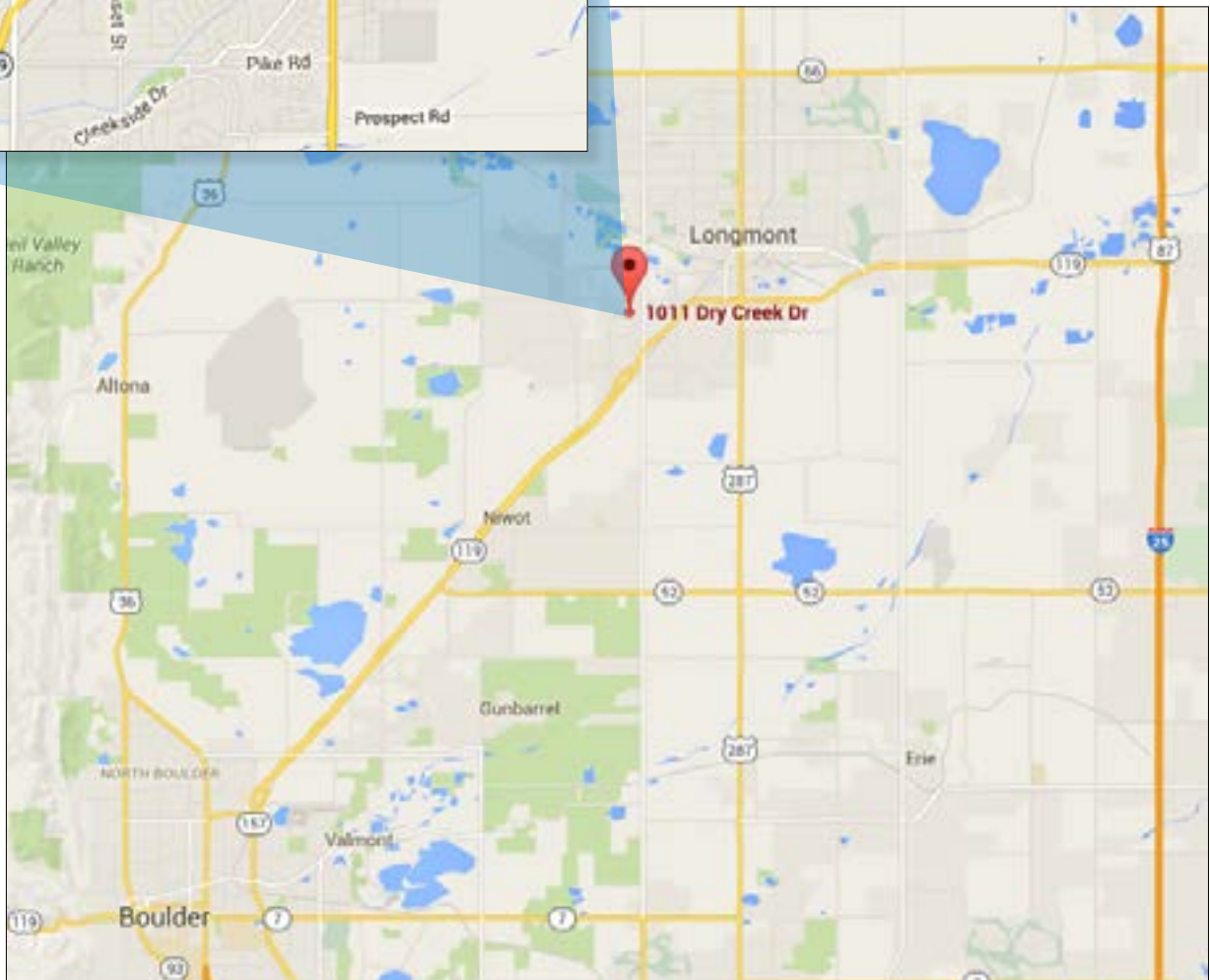
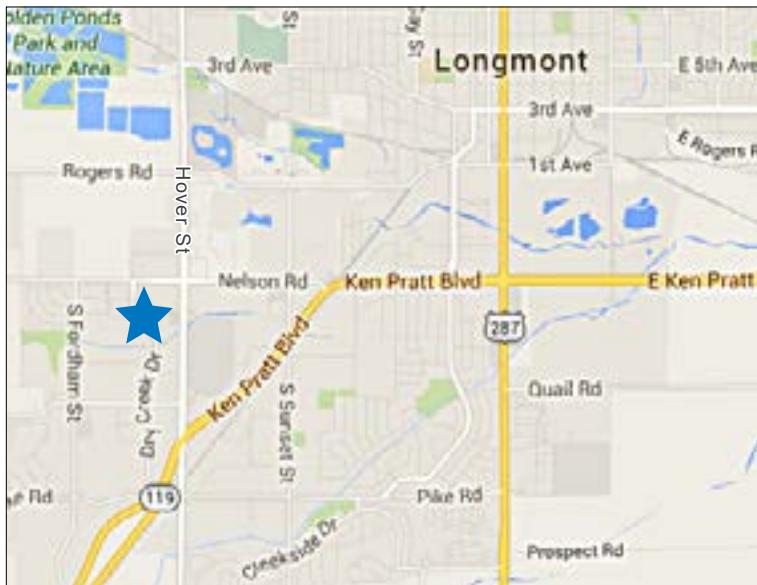
303.407.1466

david.shapiro@transwestern.com

TIM CONARRO

303.746.1490

tim@longmont-commercial-realestate.com



TRANSWESTERN OFFICE
5251 DTC Parkway, Suite 1100
Greenwood Village, CO 80111
T: 303.639.3000
www.transwestern.com/denver



SUMMIT COMMERCIAL BROKERS
263 2nd Ave, Suite 106, Niwot, CO 80544
T: 303.746.1490



Notice to prospective real estate tenants: Transwestern and its agents will be acting as agents of Landlord with the duty to represent Landlord's interests, and will not be your agent. Transwestern does not offer subagency to outside brokers. The information provided herein was obtained from sources believed reliable; however, Transwestern makes no guarantees, warranties or representations as to the completeness or accuracy thereof. The presentation of this property is submitted subject to errors, omissions, change of price or conditions, prior to sale or withdrawal without notice. Copyright © 2018 Transwestern®.