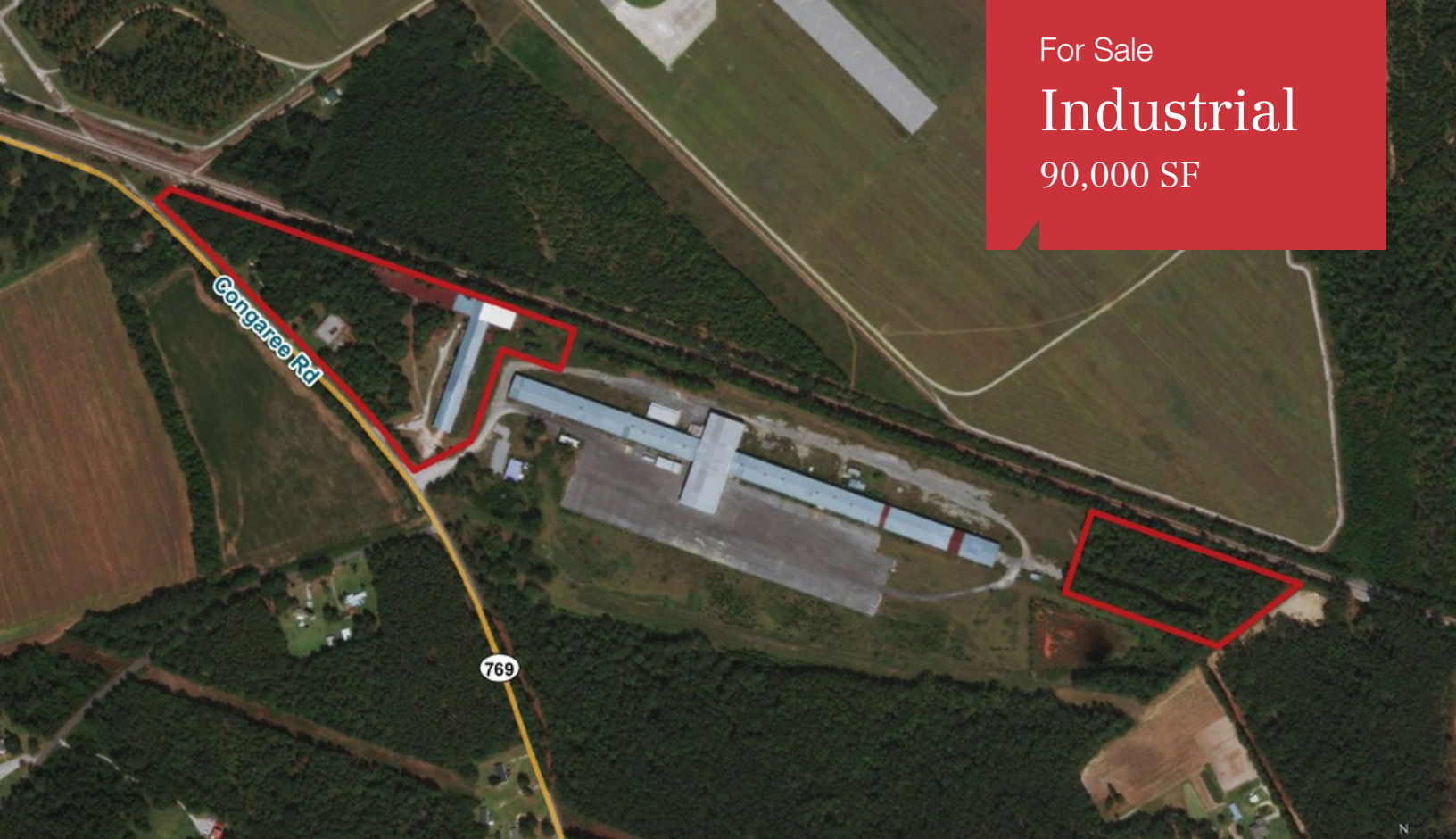


For Sale

Industrial

90,000 SF



2051 Congaree Road

Eastover, South Carolina 29044

Property Highlights

- 90,000 SF industrial/covered shed on 20.96/- acres in Eastover, SC
- 9,200 SF of office space
- Former steel manufacturing plant
- Zoned R-U with a possibility of Heavy Industrial in Richland County
- 2,200 VPD (Station 297) on Congaree Road

OFFERING SUMMARY

Sale Price	\$500,000
Lot Size	20.96 Acres
Building Size	90,000 SF

DEMOGRAPHICS

Stats	Population	Avg. HH Income
1 Mile	312	\$63,669
5 Miles	8,350	\$61,233
10 Miles	38,527	\$57,302

For more information

Mike Johnson

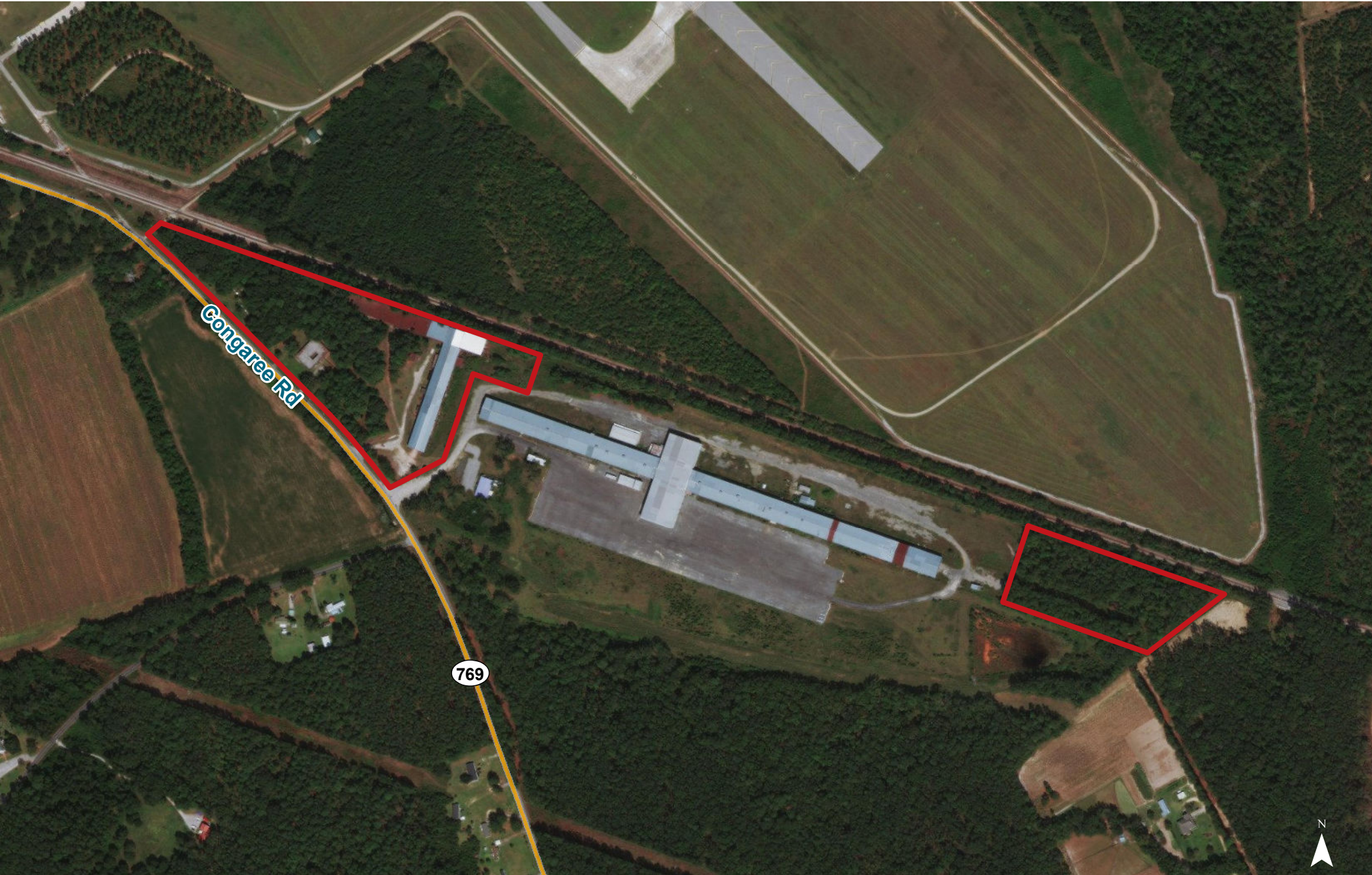
O: 803 744 9829

mjohnson@naicolumbia.com

Location



Map Updated: Monday, October 21, 2019. This information submitted is not guaranteed. Although obtained from reliable sources, all information should be confirmed prior to use or reliance upon the information. This document may not be reproduced in whole or in part without the express written consent of NAI Avant.

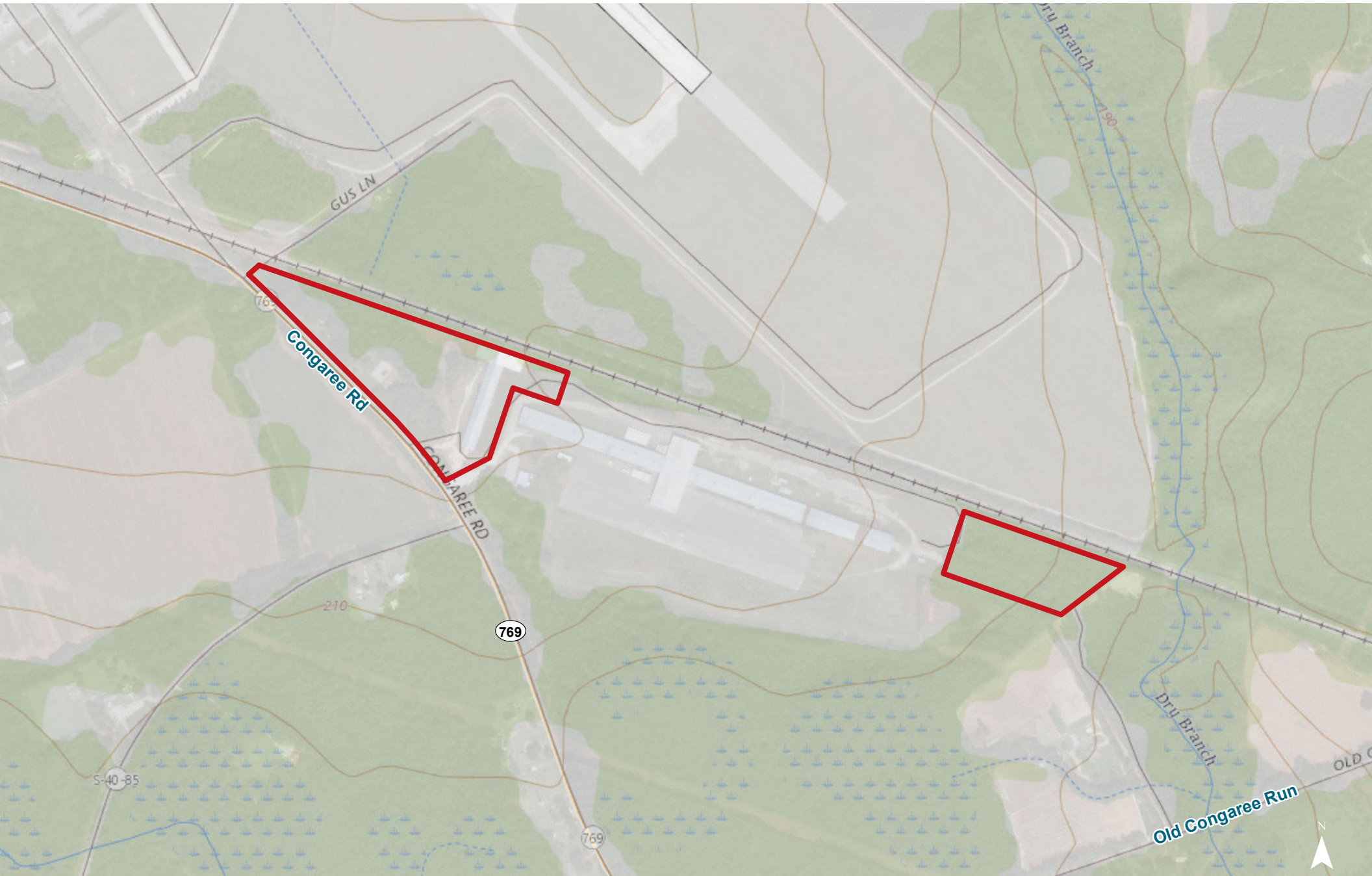


Map Updated: Monday, October 21, 2019. This information submitted is not guaranteed. Although obtained from reliable sources, all information should be confirmed prior to use or reliance upon the information. This document may not be reproduced in whole or in part without the express written consent of NAI Avant.



Map Updated: Monday, October 21, 2019. This information submitted is not guaranteed. Although obtained from reliable sources, all information should be confirmed prior to use or reliance upon the information. This document may not be reproduced in whole or in part without the express written consent of NAI Avant.

Topographical Map

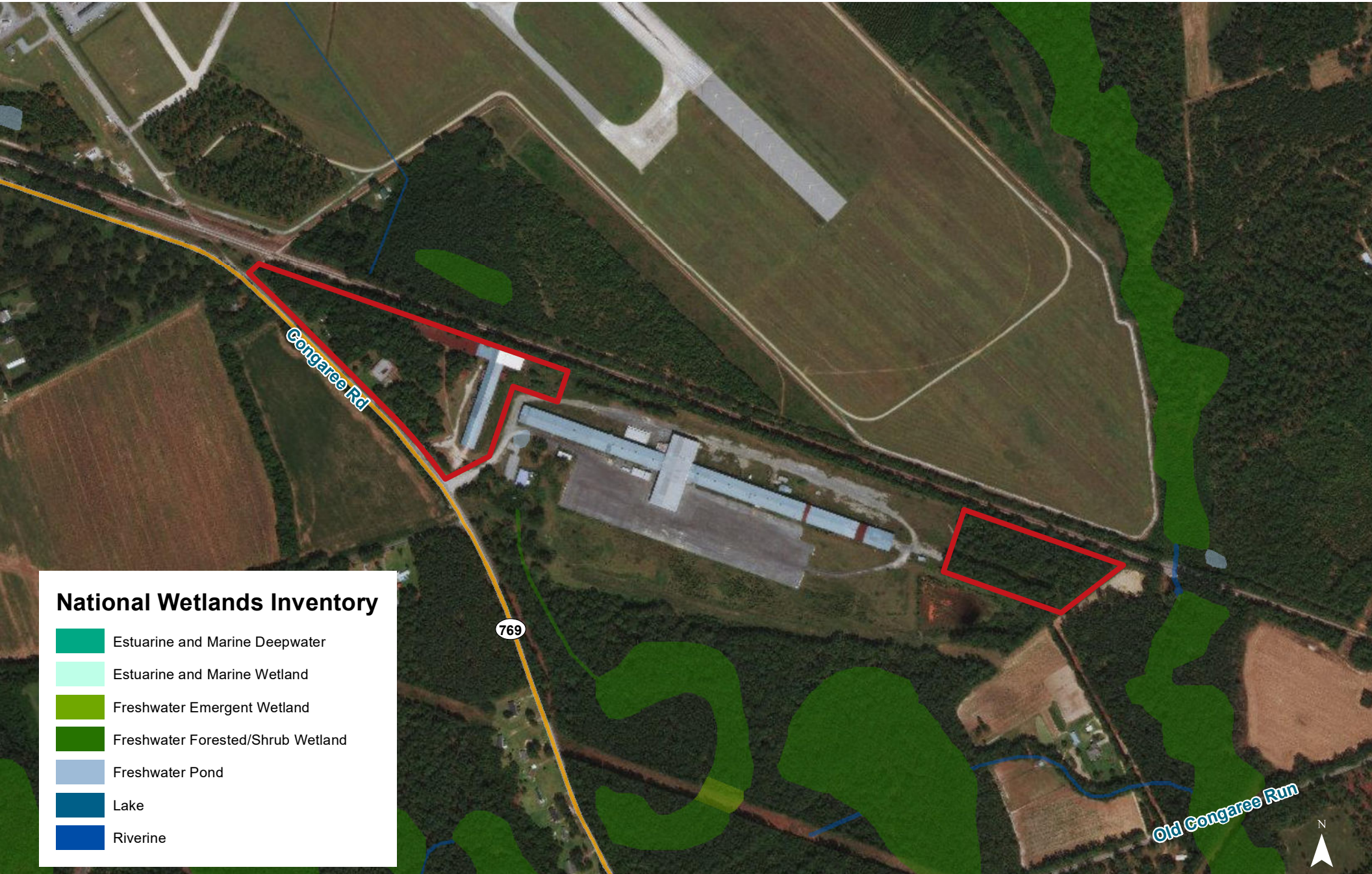


Map Updated: Monday, October 21, 2019. This information submitted is not guaranteed. Although obtained from reliable sources, all information should be confirmed prior to use or reliance upon the information. This document may not be reproduced in whole or in part without the express written consent of NAI Avant.

FEMA National Flood Hazard Layer



Map Updated: Monday, October 21, 2019. This information submitted is not guaranteed. Although obtained from reliable sources, all information should be confirmed prior to use or reliance upon the information. This document may not be reproduced in whole or in part without the express written consent of NAI Avant.



Map Updated: Monday, October 21, 2019. This information submitted is not guaranteed. Although obtained from reliable sources, all information should be confirmed prior to use or reliance upon the information. This document may not be reproduced in whole or in part without the express written consent of NAI Avant.



Map Updated: Monday, October 21, 2019. This information submitted is not guaranteed. Although obtained from reliable sources, all information should be confirmed prior to use or reliance upon the information. This document may not be reproduced in whole or in part without the express written consent of NAI Avant.

Map Unit Description (Brief, Generated)

Richland County, South Carolina

[Minor map unit components are excluded from this report]

Map unit: Cx - Coxville fine sandy loam

Component: Coxville (100%)

The Coxville component makes up 100 percent of the map unit. Slopes are 0 to 2 percent. This component is on depressions, flats, marine terraces on coastal plains. The parent material consists of clayey marine deposits. Depth to a root restrictive layer is greater than 60 inches. The natural drainage class is poorly drained. Water movement in the most restrictive layer is moderately high. Available water to a depth of 60 inches is high. Shrink-swell potential is moderate. This soil is not flooded. It is not ponded. A seasonal zone of water saturation is at 0 inches during January, February, March, April, November, December. Organic matter content in the surface horizon is about 3 percent. Nonirrigated land capability classification is 3w. This soil meets hydric criteria.

Map unit: NoA - Norfolk loamy sand, 0 to 2 percent slopes

Component: Norfolk (90%)

The Norfolk component makes up 90 percent of the map unit. Slopes are 0 to 2 percent. This component is on marine terraces on coastal plains. The parent material consists of loamy marine deposits. Depth to a root restrictive layer is greater than 60 inches. The natural drainage class is well drained. Water movement in the most restrictive layer is moderately high. Available water to a depth of 60 inches is moderate. Shrink-swell potential is low. This soil is not flooded. It is not ponded. A seasonal zone of water saturation is at 48 inches during January, February, March. Organic matter content in the surface horizon is about 1 percent. Nonirrigated land capability classification is 1. This soil does not meet hydric criteria.

Map unit: NoB - Norfolk loamy sand, 2 to 6 percent slopes

Component: Norfolk (90%)

The Norfolk component makes up 90 percent of the map unit. Slopes are 2 to 6 percent. This component is on marine terraces on coastal plains. The parent material consists of loamy marine deposits. Depth to a root restrictive layer is greater than 60 inches. The natural drainage class is well drained. Water movement in the most restrictive layer is moderately high. Available water to a depth of 60 inches is moderate. Shrink-swell potential is low. This soil is not flooded. It is not ponded. A seasonal zone of water saturation is at 48 inches during January, February, March. Organic matter content in the surface horizon is about 1 percent. Nonirrigated land capability classification is 2e. This soil does not meet hydric criteria.

Map Unit Description (Brief, Generated)

Richland County, South Carolina

Map unit: ObA - Orangeburg loamy sand, 0 to 2 percent slopes

Component: Orangeburg (100%)

The Orangeburg component makes up 100 percent of the map unit. Slopes are 0 to 2 percent. This component is on marine terraces on coastal plains. The parent material consists of loamy marine deposits. Depth to a root restrictive layer is greater than 60 inches. The natural drainage class is well drained. Water movement in the most restrictive layer is moderately high. Available water to a depth of 60 inches is moderate. Shrink-swell potential is low. This soil is not flooded. It is not ponded. There is no zone of water saturation within a depth of 72 inches. Organic matter content in the surface horizon is about 1 percent. Nonirrigated land capability classification is 1. This soil does not meet hydric criteria.

Map unit: ObB - Orangeburg loamy sand, 2 to 6 percent slopes

Component: Orangeburg (100%)

The Orangeburg component makes up 100 percent of the map unit. Slopes are 2 to 6 percent. This component is on marine terraces on coastal plains. The parent material consists of loamy marine deposits. Depth to a root restrictive layer is greater than 60 inches. The natural drainage class is well drained. Water movement in the most restrictive layer is moderately high. Available water to a depth of 60 inches is moderate. Shrink-swell potential is low. This soil is not flooded. It is not ponded. There is no zone of water saturation within a depth of 72 inches. Organic matter content in the surface horizon is about 1 percent. Nonirrigated land capability classification is 2e. This soil does not meet hydric criteria.

Map unit: Ra - Rains sandy loam

Component: Rains (100%)

The Rains component makes up 100 percent of the map unit. Slopes are 0 to 2 percent. This component is on depressions, flats, marine terraces on coastal plains. The parent material consists of loamy marine deposits. Depth to a root restrictive layer is greater than 60 inches. The natural drainage class is poorly drained. Water movement in the most restrictive layer is moderately high. Available water to a depth of 60 inches is high. Shrink-swell potential is low. This soil is not flooded. It is not ponded. A seasonal zone of water saturation is at 0 inches during January, February, March, April, November, December. Organic matter content in the surface horizon is about 4 percent. Nonirrigated land capability classification is 3w. This soil meets hydric criteria.

Map Unit Description (Brief, Generated)

Richland County, South Carolina

Map unit: Ud - Udorthents

Component: Udorthents (100%)

The Udorthents component makes up 100 percent of the map unit. Slopes are 0 to 10 percent. This component is on leveled land. The parent material consists of loamy marine deposits and clayey residuum. Depth to a root restrictive layer is greater than 60 inches. The natural drainage class is moderately well drained. Water movement in the most restrictive layer is low. Available water to a depth of 60 inches is moderate. Shrink-swell potential is moderate. This soil is not flooded. It is not ponded. There is no zone of water saturation within a depth of 72 inches. Organic matter content in the surface horizon is about 0 percent. Nonirrigated land capability classification is 4e. This soil does not meet hydric criteria.