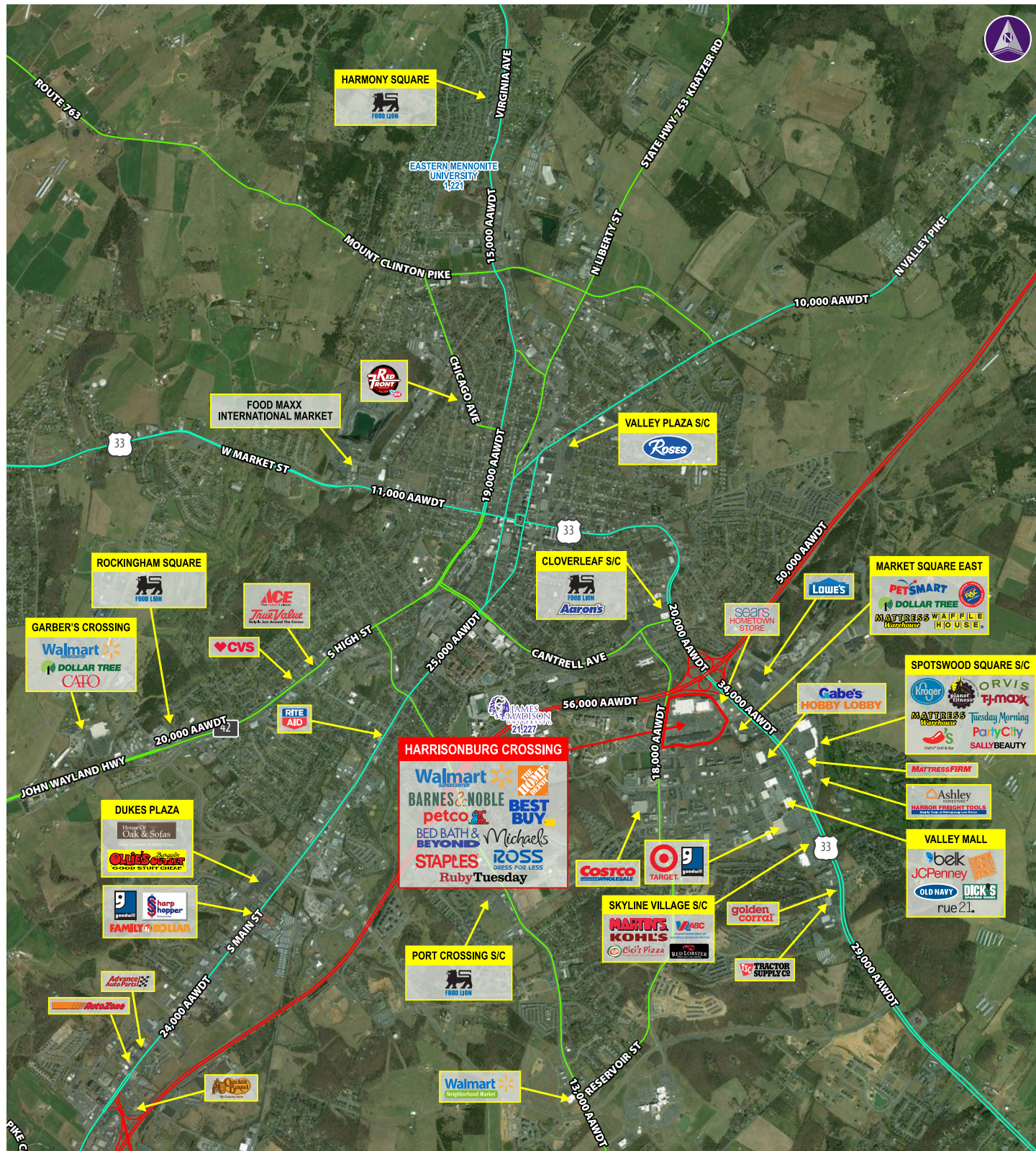


HARRISONBURG CROSSING ■ HARRISONBURG, VA



Information herein has been obtained from sources believed to be reliable. While we do not doubt its accuracy, we have not verified it and make no guarantee, warranty or representation about it. Independent confirmation of its accuracy and completeness is your responsibility. H&R Retail, Inc.

Harrisonburg Crossing

259 BURGESS ROAD | HARRISONBURG, VA 22801

1,600 - 2,800 SF Spaces Available



Property Highlights

- Dominant power center in the Harrisonburg with over 523,000 square feet
- Adjacent to James Madison University with over 21,000 students
- Great visibility and regional access to Interstate 81
- Join anchors:

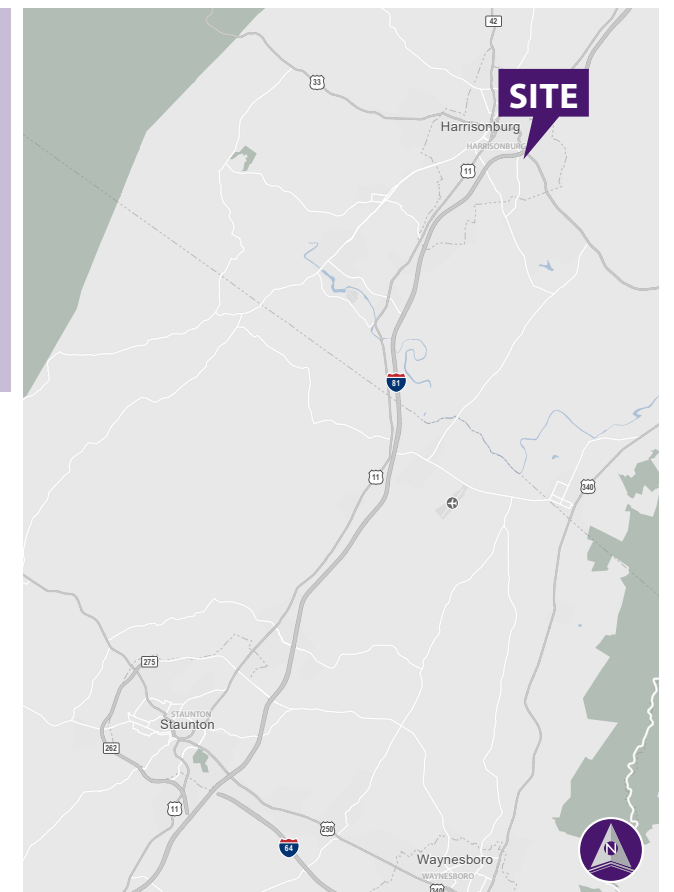


Demographics (2018 Estimated)

	3 Mile	5 Mile	10 Mile
Population	56,108	70,795	100,890
Average HH Income	\$58,127	\$63,114	\$66,809
Daytime Population	65,168	85,398	114,539
Number of Households	18,327	24,173	35,293

Please Contact

Geoffrey L. Mackler	Ray R. Schupp	Bryan C. Davis
240.482.3616 (direct)	240.482.3611 (direct)	202.438.7951 (cell)
301.656.3030 (office)	301.656.3030 (office)	240.482.3612 (direct)
gmackler@hrretail.com	rschupp@hrretail.com	bdavis@hrretail.com



HARRISONBURG CROSSING ■ HARRISONBURG, VA



TENANTS	SIZE
1. AVAILABLE	2,800 SF
2. Qdoba	2,250 SF
3. Stix Kabob	1,000 SF
4. Sprint	4,000 SF
5. Franco's Pizza	4,000 SF
6A. Pho Restaurant	2,000 SF
6B. Vape Shop	2,000 SF
7. Skyline Super Buffet	8,000 SF
8. Check into Cash	1,200 SF
9. E Tailor & Cleaners	1,200 SF
10. AVAILABIE	1,200 SF
11. GameStop	1,600 SF
12. AVAILABLE	1,600 SF
13. Barber Shop	2,062 SF
14. Petco	15,000 SF
15. Best Buy	32,958 SF
16. Staples	20,388 SF
17. Ross Dress for Less	30,137 SF
18. Michael's	20,215 SF
19. Bed Bath & Beyond	21,322 SF
20. Barnes & Noble	23,079 SF
21. Panera Bread	4,996 SF
TOTAL	203,007 SF