



**CUSHMAN &  
WAKEFIELD**

FOR LEASE

**1777 N. California Blvd.**

Walnut Creek, CA



Century Plaza is a three-story project consisting of approximately 22,852 Rentable Square Feet conveniently located in downtown Walnut Creek.

### **Available Space**

- Suite 100 - ±3,147 RSF
- Asking Rent: \$2.75 Full Service
- Walking distance to downtown Walnut Creek
- Walking distance to BART
- Direct freeway access
- Professional atmosphere
- Free secured parking

[View Site Specific COVID-19 Prevention Plan](#)



For more information, please contact:

**Chris M. Baker**

Director

+1 925 627 2888

chris.m.baker@cushwake.com LIC

#01334466

1333 N. California Blvd., Suite  
500 Walnut Creek, CA 94596

ph: +1 925 935 0770

fx: +1 925 935 3409

[cushmanwakefield.com](http://cushmanwakefield.com)



**Newly Renovated Common Areas**



For more information, please contact:

**Chris M. Baker**

Director

+1 925 627 2888

chris.m.baker@cushwake.com LIC

#01334466

1333 N. California Blvd., Suite  
500 Walnut Creek, CA 94596

ph: +1 925 935 0770

fx: +1 925 935 3409

[cushmanwakefield.com](http://cushmanwakefield.com)



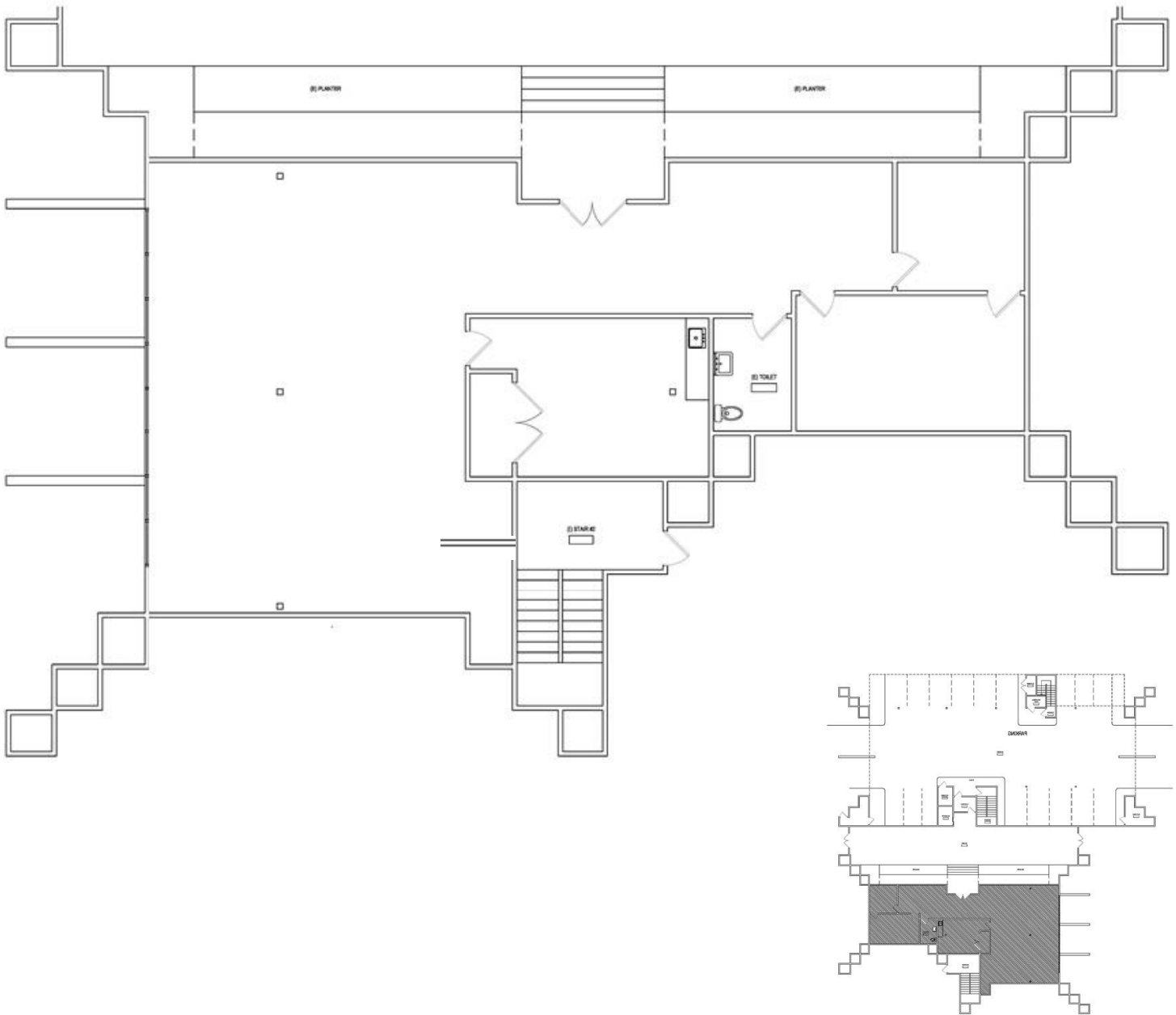
**CUSHMAN &  
WAKEFIELD**

FOR LEASE

**1777 N. California Blvd.**

Walnut Creek, CA

**Suite 100 - ±3,147 Rentable Square Feet**



For more information, please contact:

**Chris M. Baker**

Director

+1 925 627 2888

chris.m.baker@cushwake.com LIC

#01334466

1333 N. California Blvd., Suite  
500 Walnut Creek, CA 94596

ph: +1 925 935 0770

fx: +1 925 935 3409

[cushmanwakefield.com](http://cushmanwakefield.com)