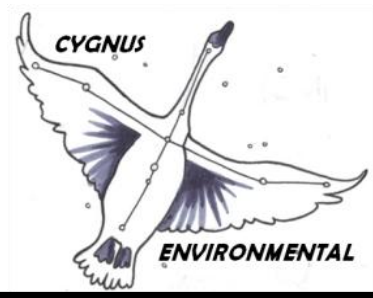
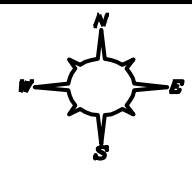


**LEGEND**

 Approximate Location of Site Boundary

**SOURCE:**

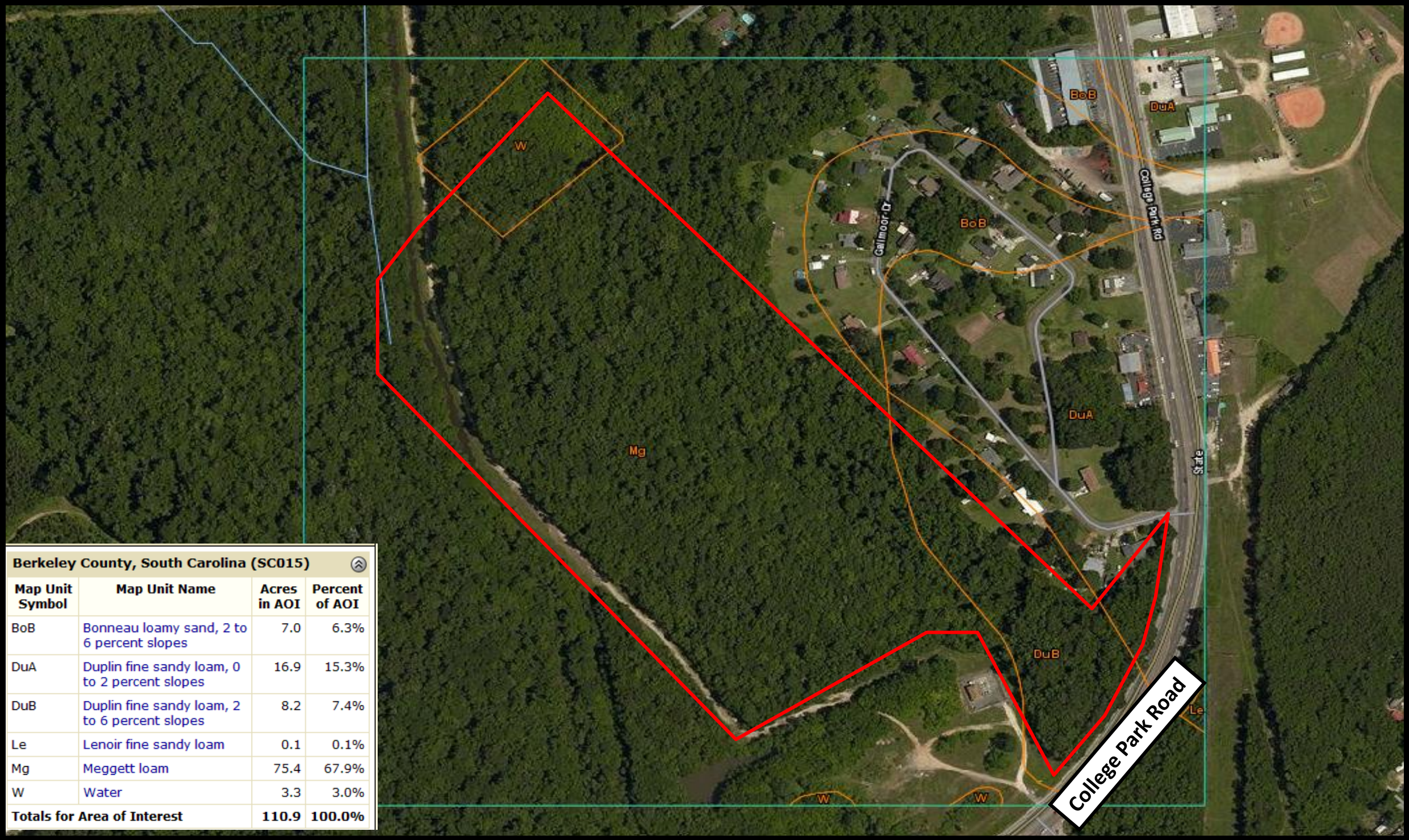
USGS Topo Maps  
Wetlands Mapper  
NTS



**FIGURE 1  
USGS TOPOGRAPHY**

College Park Road  
TMS 242-00-01-001  
Ladson, Berkeley County, SC  
Cygnus Project 2016-126

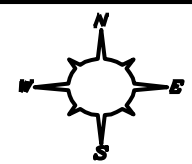




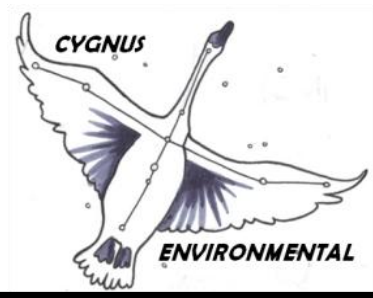
**LEGEND**

Approximate Location of Site Boundary

SOURCE:



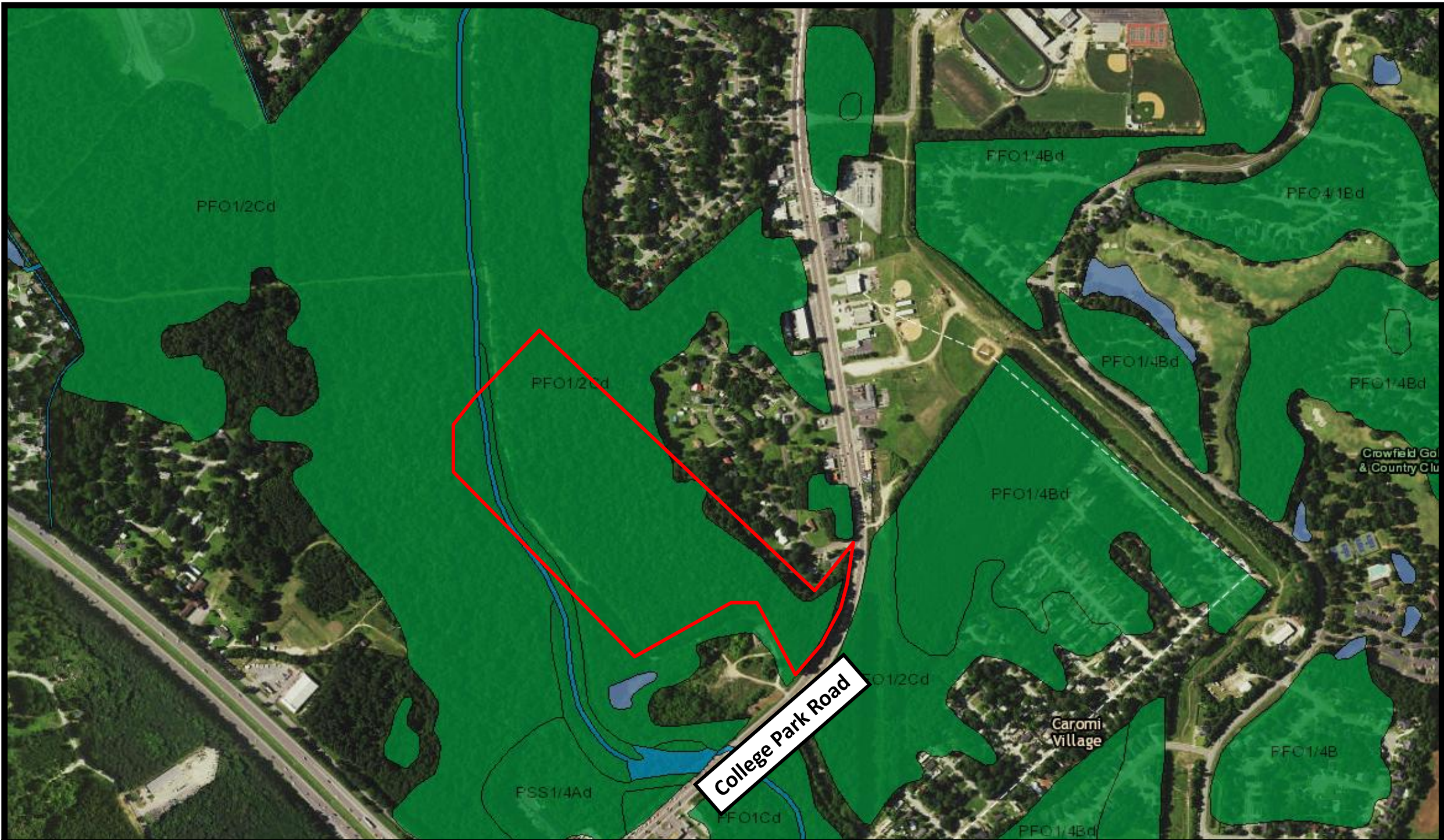
USDA  
NCSS WEB SOIL SURVEY  
SCALE AS SHOWN (Approx)



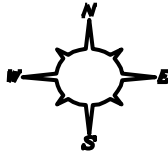
**FIGURE 2  
SOILS MAP**

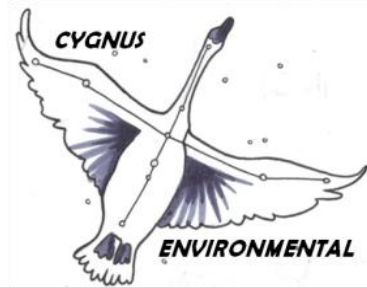
College Park Road  
TMS 242-00-01-001  
Ladson, Berkeley County, SC  
Cygnus Project 2016-126





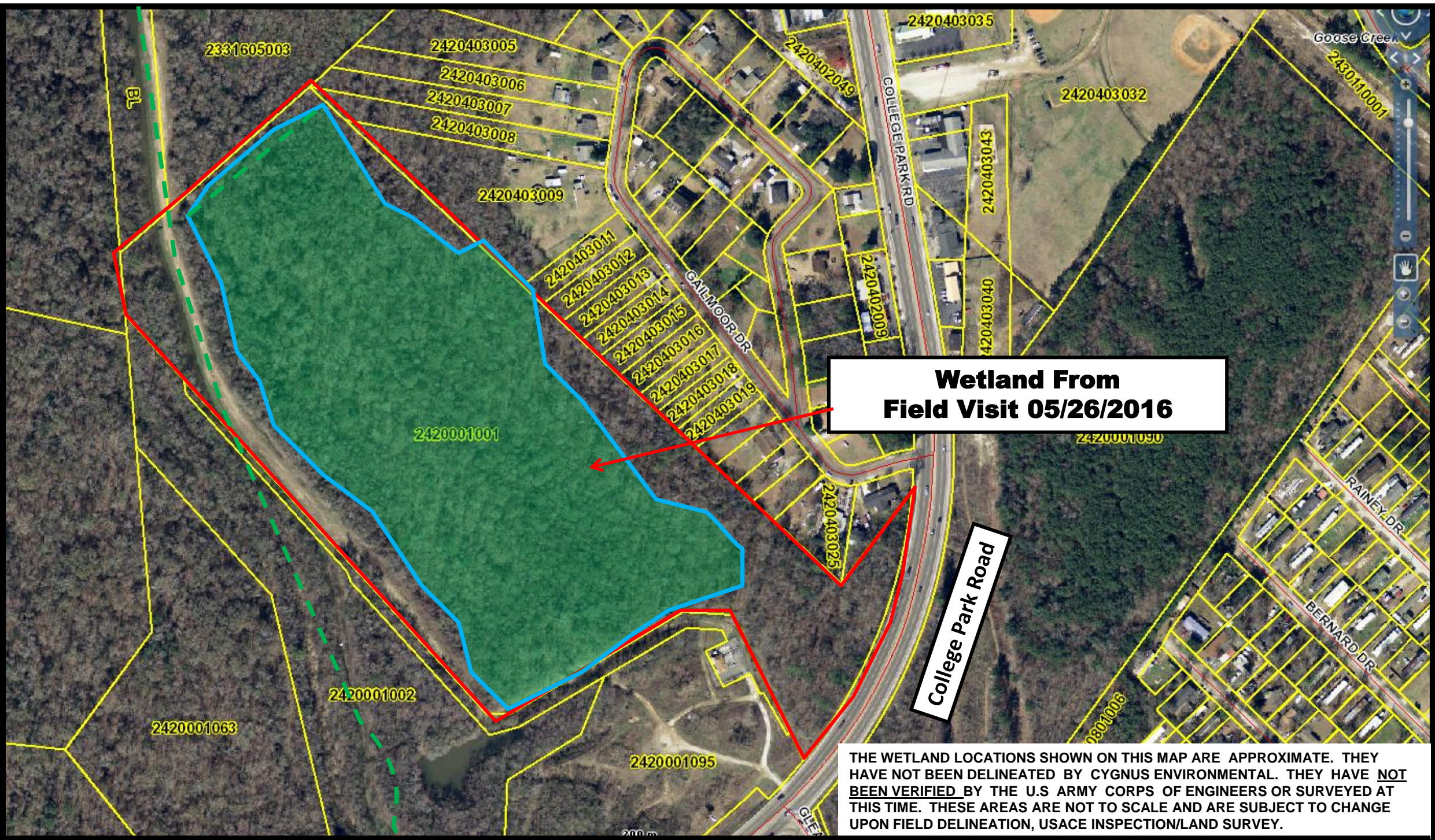
**LEGEND**  
 — Approximate Location of Site Boundary

**SOURCE:**   
 US FISH & WILDLIFE SERVICE  
 NOT TO SCALE






**FIGURE 3**  
**NATIONAL WETLANDS INVENTORY**  
 College Park Road  
 TMS 242-00-01-001  
 Ladson, Berkeley County, SC  
 Cygnus Project 2016-126

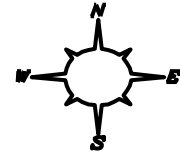


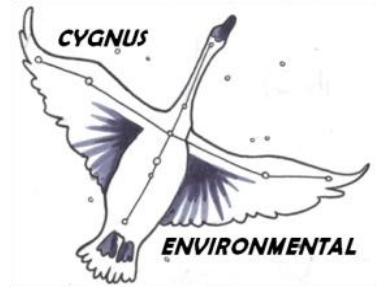


THE WETLAND LOCATIONS SHOWN ON THIS MAP ARE APPROXIMATE. THEY HAVE NOT BEEN DELINEATED BY CYGNUS ENVIRONMENTAL. THEY HAVE NOT BEEN VERIFIED BY THE U.S ARMY CORPS OF ENGINEERS OR SURVEYED AT THIS TIME. THESE AREAS ARE NOT TO SCALE AND ARE SUBJECT TO CHANGE UPON FIELD DELINEATION, USACE INSPECTION/LAND SURVEY.

**LEGEND**

-  Approximate Location of Site Boundary
-  Approximate Location of Wetland
-  Approximate Drainage Ditches

SOURCE:   
 2015  
 BERKELEY COUNTY GIS  
 NOT TO SCALE



**FIGURE 4  
 APPROXIMATE WETLAND AREA**

College Park Road  
 TMS 242-00-01-001  
 Ladson, Berkeley County, SC  
 Cygnus Project 2016-126