

# FOR LEASE

## Cameron Park Plaza

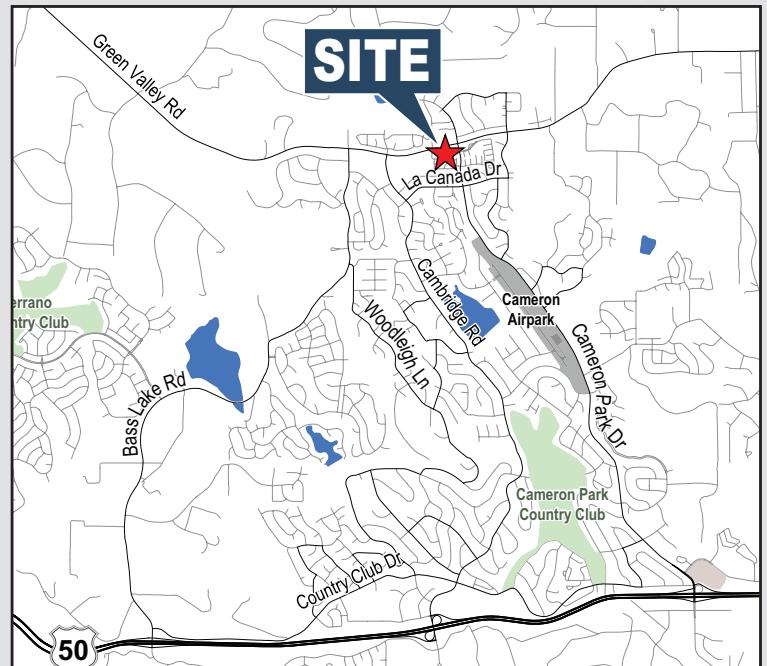
2650 Cameron Park Drive, El Dorado Hills, CA



**Lease Rate: \$1.00 - \$1.25/SF NNN**

### Property Details

- ±900 - ±4,056 SF Available For Lease
- Monument signage available
- Very busy Circle K market & gas station
- Ample parking with good ingress/egress points
- Great visibility to Green Valley Rd & Cameron Park Drive
- Tuscan colors, metal & glass storefronts with attractive design work
- Existing tenants include: Mountain Mike's Pizza, Mexican Restaurant, Veterinary Clinic, Golden 1 ATM, Large Thrift Store, Coffee Shop



### Bill Perkins

Senior Vice President  
916.751.3639  
bperkins@voitco.com  
CA BRE Lic. #01204666

2237 Douglas Blvd., Suite 100, Roseville, CA 95661  
916.772.8648 | 916.848.0205 Fax | Lic #01333376 | [www.voidco.com](http://www.voidco.com)

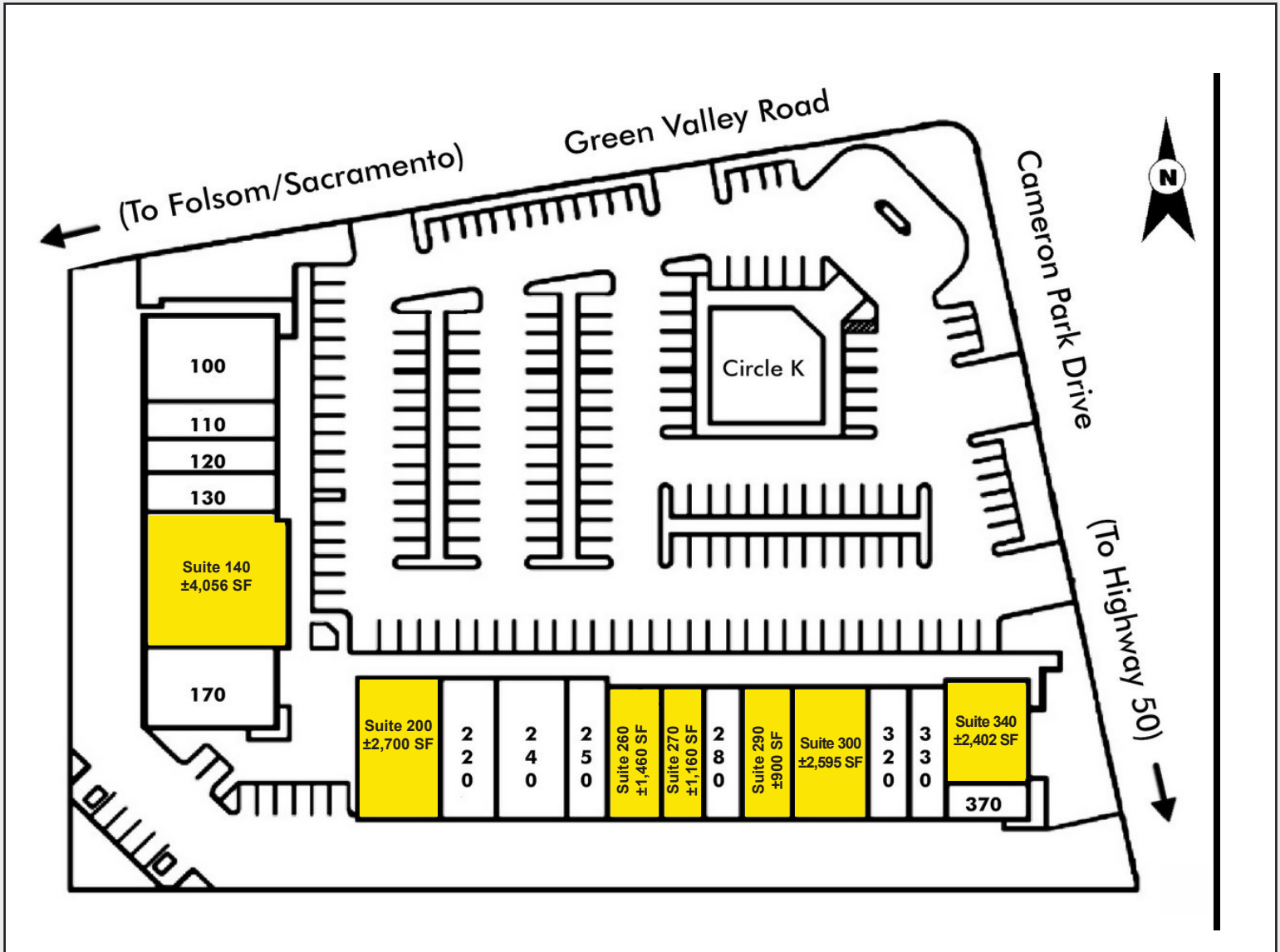
# Voit

REAL ESTATE SERVICES

# FOR LEASE Cameron Park Plaza

2650 Cameron Park Drive, El Dorado Hills, CA

SITE PLAN - ±900 - ±4,056 SF AVAILABLE



## Bill Perkins

Senior Vice President  
916.751.3639  
bperkins@voitco.com  
CA BRE Lic. #01204666

2237 Douglas Blvd., Suite 100, Roseville, CA 95661  
916.772.8648 | 916.848.0205 Fax | Lic #01333376 | [www.voitco.com](http://www.voitco.com)

Licensed as a Real Estate Salesperson by the CA Bur of Real Estate. The information contained herein has been obtained from sources we deem reliable. While we have no reason to doubt its accuracy, we do not guarantee it. ©2014 Voit Real Estate Services, Inc. All Rights Reserved. Real People. Real Solutions.® is a registered trademark of Voit Real Estate Services.

# Voit

REAL ESTATE SERVICES