

For Lease

Morrow Industrial Park 1235 Commerce Road, Morrow, GA, 30260



PROPERTY OVERVIEW

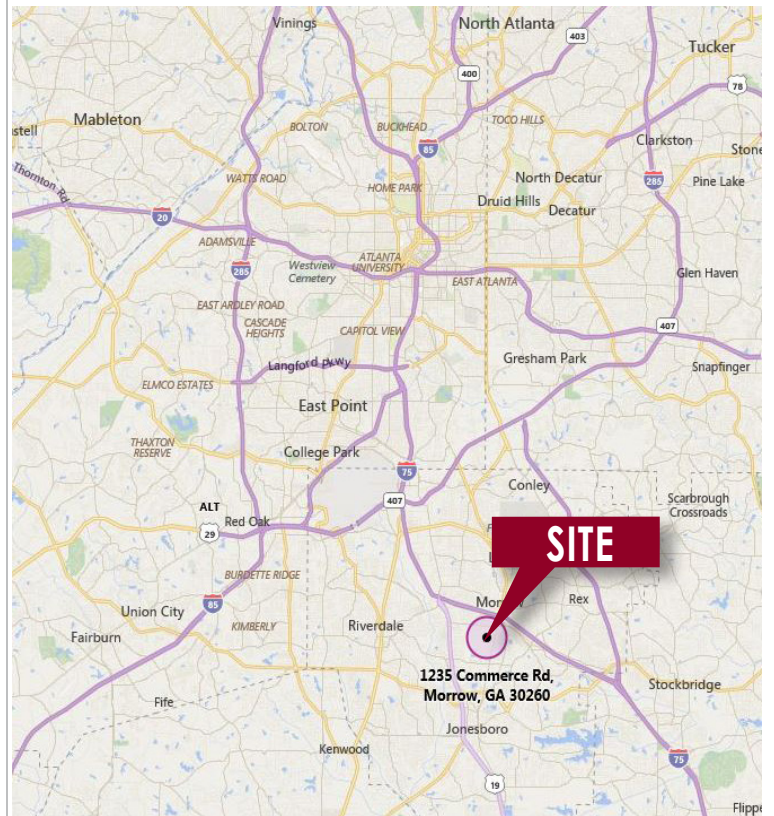
County: Clayton
Sub Market: S. Atl/Airport
Zoning: HI (Heavy Industrial)

BUILDING DATA

Total Building SF: 159,332
Acreage: 9.10 Acres
Parking: Rear load portion has 137 spaces
Clear Height: 22' - 24'
Sprinklered: Yes

LISTING DATA

Suite J/K	40,240 SF	2,198SF Office	6 Docks
Suite C	10,009 SF	1,170 SF Office	3 Grade-level doors
Suite D	5,740 SF	4,880 SF Office	1 Grade-level door
Suite E	3,168 SF	1,195 SF Office	1 Grade-level door
Suite F	3,200 SF	1,050 SF Office	1 Grade-level door



All information furnished regarding property for sale, rental or financing is from sources deemed reliable, but no warranty or representation is made to the accuracy thereof and same is submitted to errors, omissions, change of price, rental or other conditions prior to sale, lease or financing or withdrawal without notice. No liability of any kind is to be imposed on the broker herein.



404.442.2810

For more information contact:

Michael Sutter

msutter@lee-associates.com

D 404.442.2804

Will Alligood

walligood@lee-associates.com

D 404.442.2813

lee-associates.com

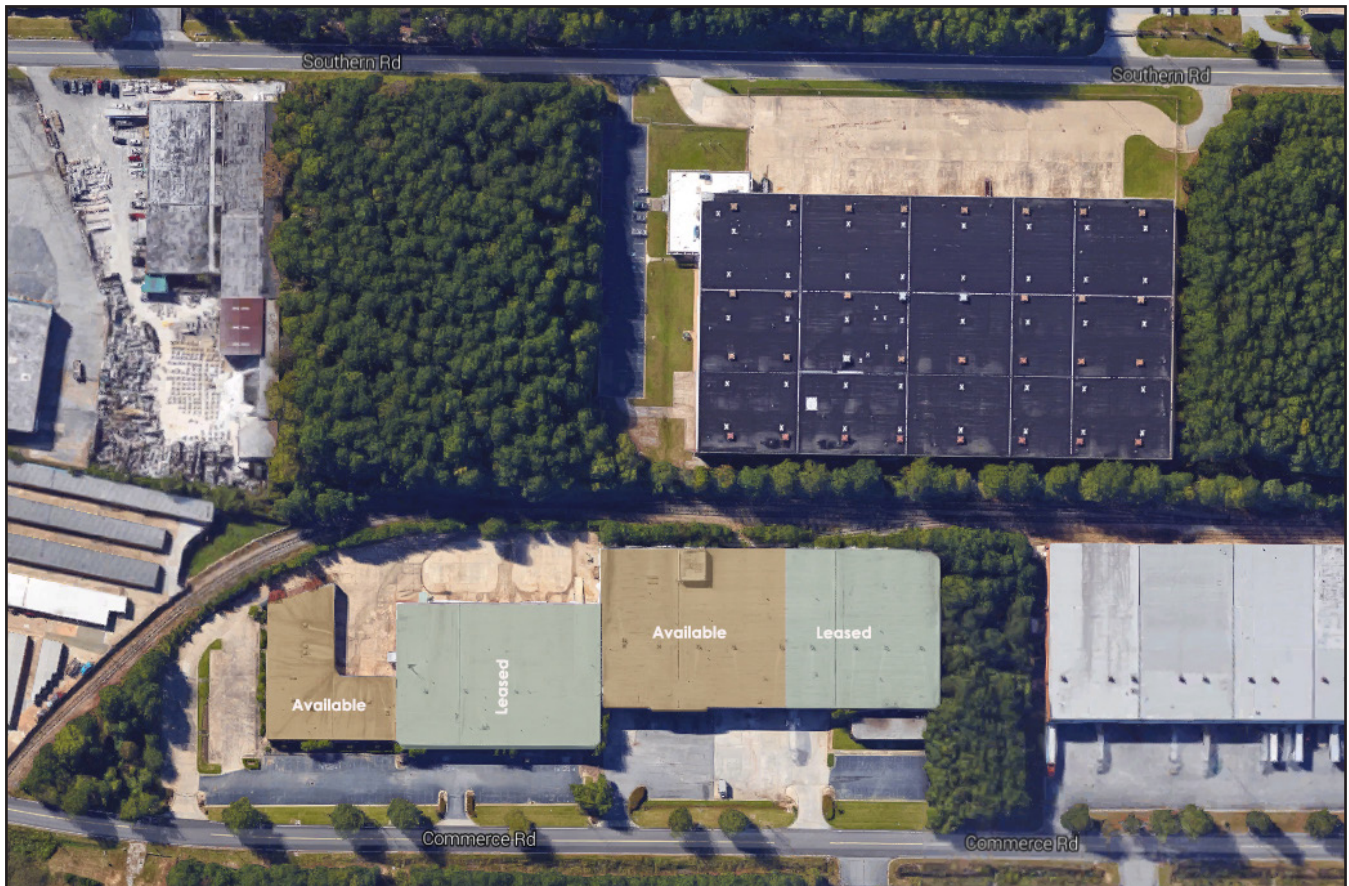
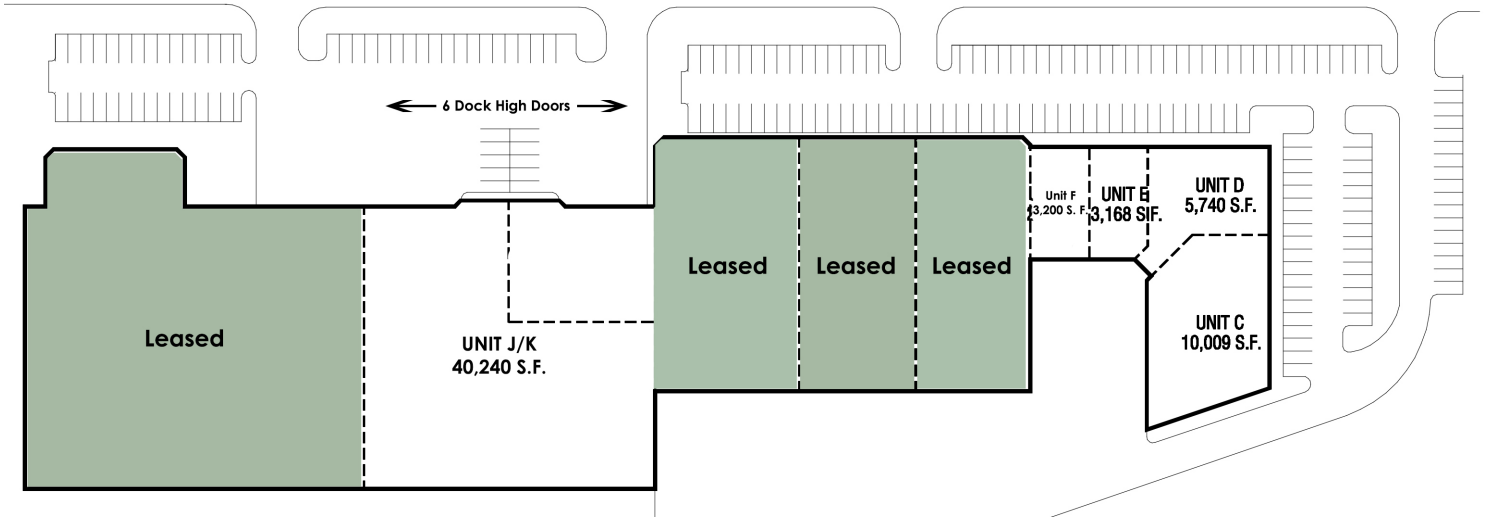


For Lease

Morrow Industrial Park
1235 Commerce Road, Morrow, GA, 30260

SITE PLAN

COMMERCE ROAD



All information furnished regarding property for sale, rental or financing is from sources deemed reliable, but no warranty or representation is made to the accuracy thereof and same is submitted to errors, omissions, change of price, rental or other conditions prior to sale, lease or financing or withdrawal without notice. No liability of any kind is to be imposed on the broker herein.

LEE & ASSOCIATES
COMMERCIAL REAL ESTATE SERVICES

404.442.2810

For more information contact:

Michael Sutter

msutter@lee-associates.com

D 404.442.2804

Will Alligood

walligood@lee-associates.com

D 404.442.2813

lee-associates.com

