



EUREKA BUILDING

Tech + Creative Companies Call Us Home

EUREKABUILDING.COM | 1621 ALTON PKWY IRVINE, CA



OUR CAMPUS

Coworking, Creative Office Space + Events

Established in 2014, the Eureka Building is a 3-acre creative office, coworking and event campus in Irvine designed to offer Orange County's startups a community, accelerate innovation and support local entrepreneurship. Located in the heart of the Irvine Business Complex, Eureka is just minutes away from some of OC's most popular centers like The Von Karman Plaza, The District, Diamond Jamboree, The Square and Irvine Concourse. Access to the 5, 405, 55 and 73 highways makes commuting as easy as ever.



COMMUNITY

Tech + Creative Networking Events

Eureka is home to one of the largest tech and creative communities in SoCal. Our tenants are welcome to engage in events and programming within the community that are regularly hosted in our venue spaces at Eureka Building.

Eureka is home for several local meetups, including: OC Bitcoin Network, Startup Grind OC, Integrous Women, OC Indie Developers, and more.



POD 1 - AVAILABLE FOR LEASE

STARTS AT \$2,300/MONTH • UP TO 8 PEOPLE • APPROX 550 SQFT



ABOUT THE SPACE

Located on the second floor in the Eureka Hub, Pod 1 is a corner suite with large windows that look onto Eureka's beautiful Park. With the benefits of being a part of the hub and the abundance of energizing natural light in this space, it won't be available for long!

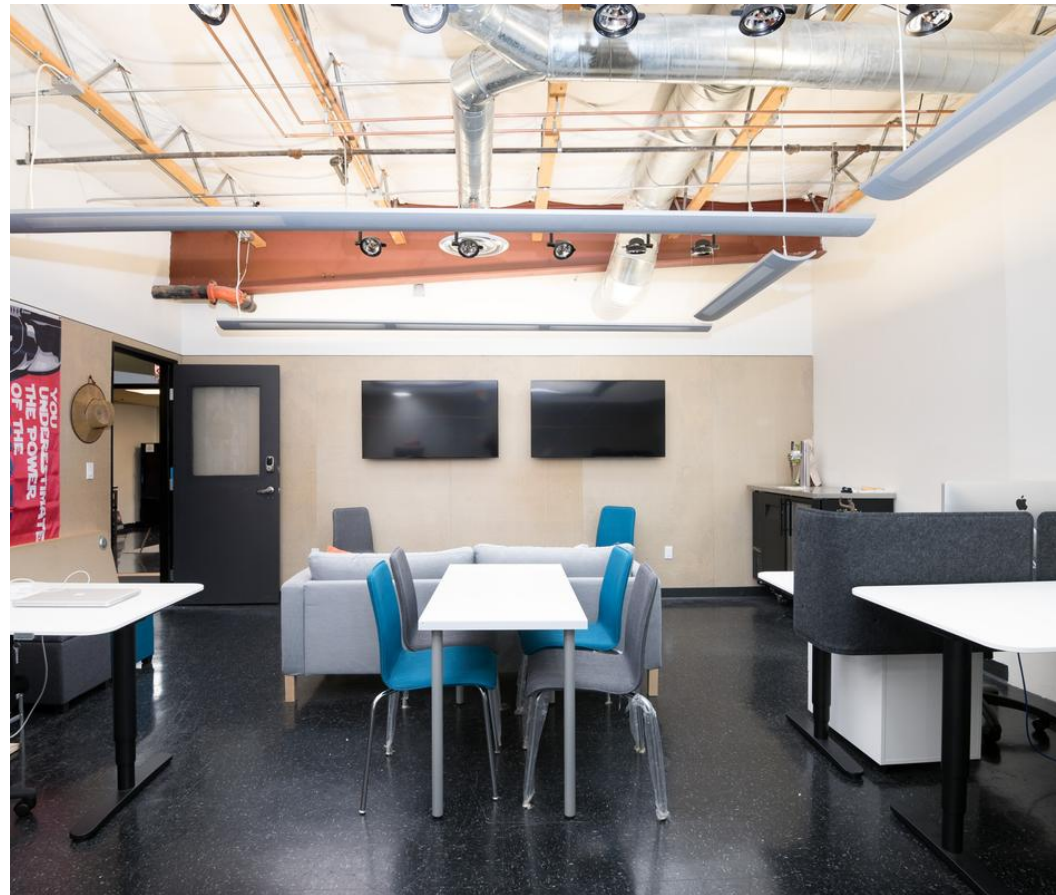
Schedule a tour! ashley@eurekabuilding.com • 949.439.7677

KEY FEATURES

- Wifi
- 24/7 access
- Ample parking
- 20 hours/month conference room usage
- Mailing services
- Free entry to Eureka community events
- Kitchen + lounge access

POD 2 - AVAILABLE FOR LEASE

STARTS AT \$2,100/MONTH • UP TO 8 PEOPLE • APPROX 600 SQFT



ABOUT THE SPACE

Located on the second floor in the Eureka Hub, Pod 2 is in the center of our hub. This pod has direct access to the lounge area and conference rooms. Perfect for a small growing team.

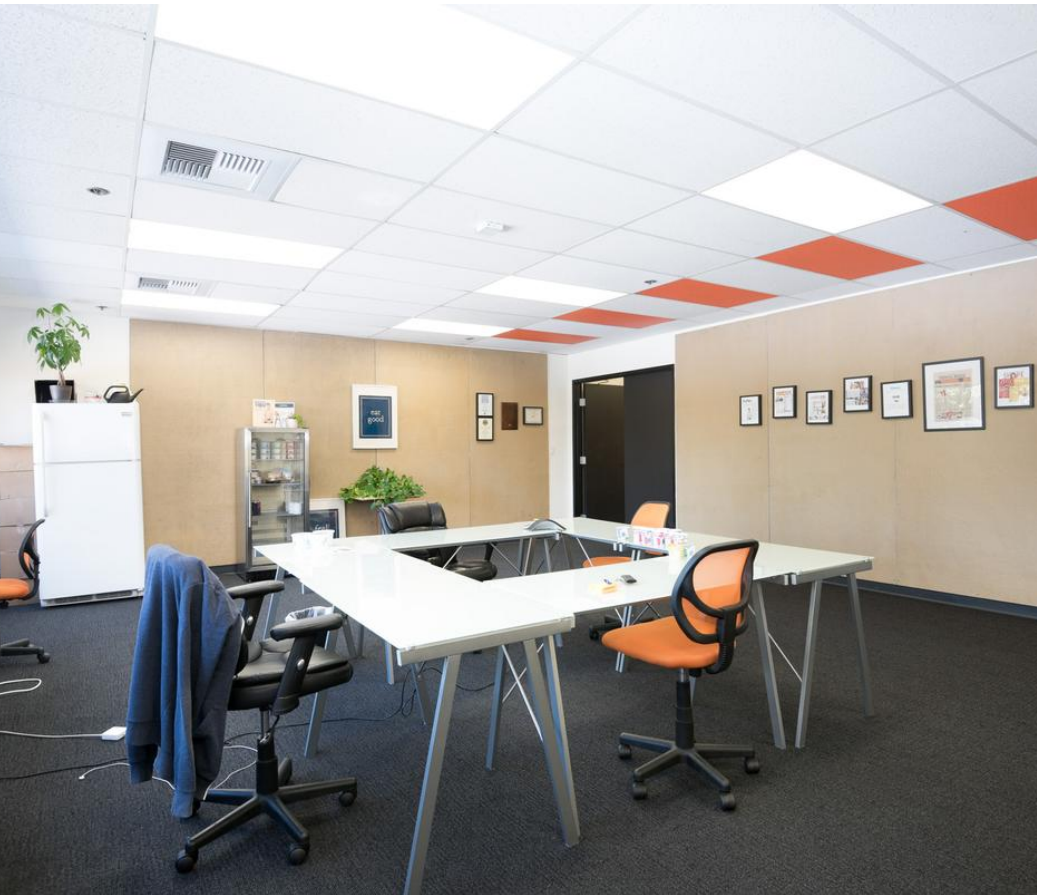
Schedule a tour! ashley@eurekabuilding.com • 949.439.7677

KEY FEATURES

- Wifi
- 24/7 access
- Ample parking
- 20 hours/month conference room usage
- Mailing services
- Free entry to Eureka community events
- Kitchen + lounge access

POD 4 - AVAILABLE FOR LEASE

STARTS AT \$3,200/MONTH • UP TO 15 PEOPLE • APPROX 1,270 SQFT



ABOUT THE SPACE

Located on the second floor in the Eureka Hub, Pod 4 our largest office in the Hub. This pod has an entire wall of windows that bring in great natural light and look onto Eureka's beautiful Park.

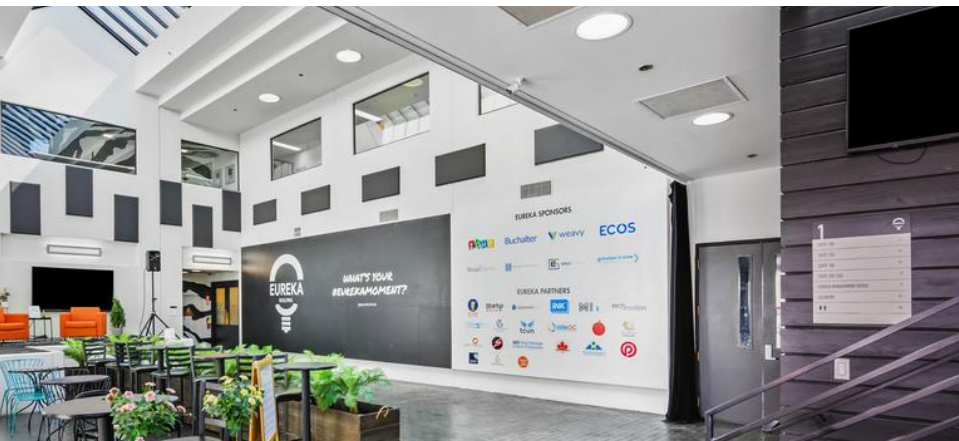
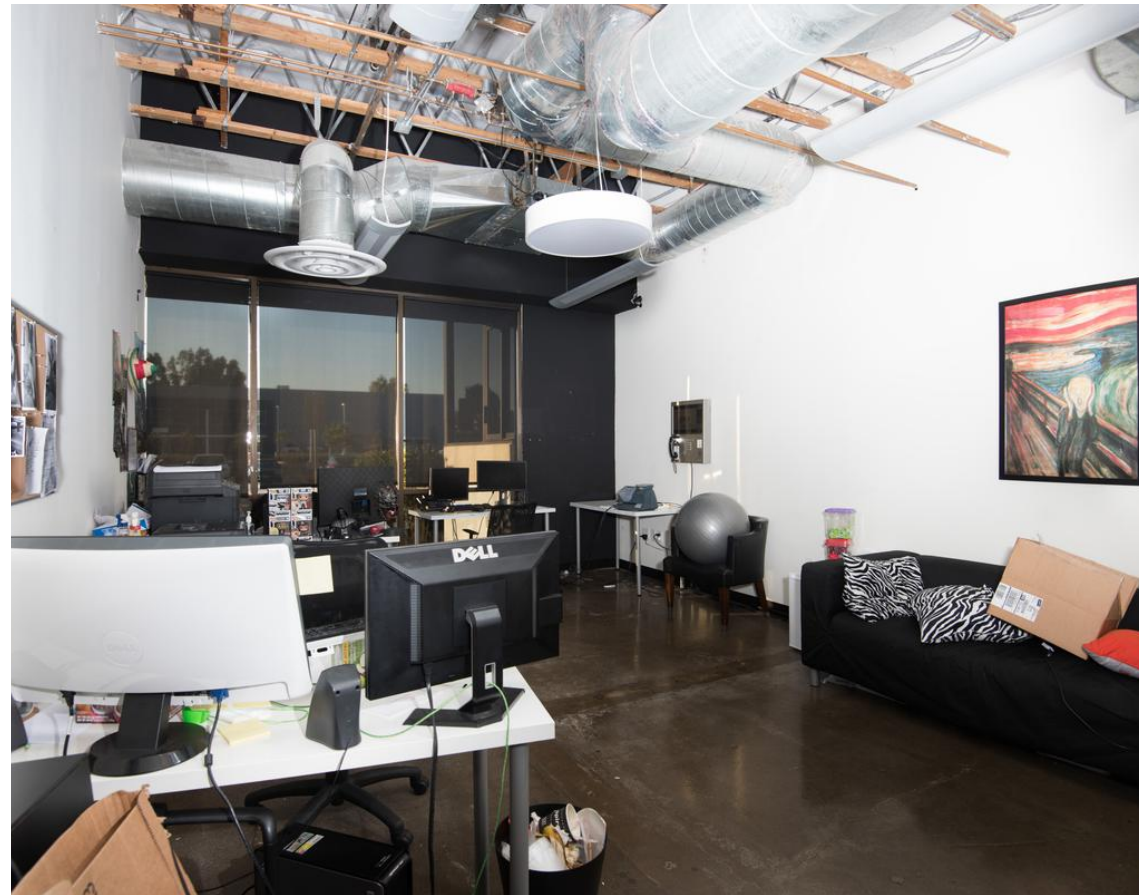
Schedule a tour! ashley@eurekabuilding.com • 949.439.7677

KEY FEATURES

- Wifi
- 24/7 access
- Ample parking
- 20 hours/month conference room usage
- Mailing services
- Free entry to Eureka community events
- Kitchen + lounge access

POD 5 - AVAILABLE FOR LEASE

STARTS AT \$2,000/MONTH • UP TO 5 PEOPLE • APPROX 385 SQFT



ABOUT THE SPACE

Located on the first floor of the Eureka Building, Pod 5 features beautiful floor to ceiling windows, allowing for ample energetic natural light. This spacious suite has direct access to Eureka's Atrium which is home to Euro Caffé.

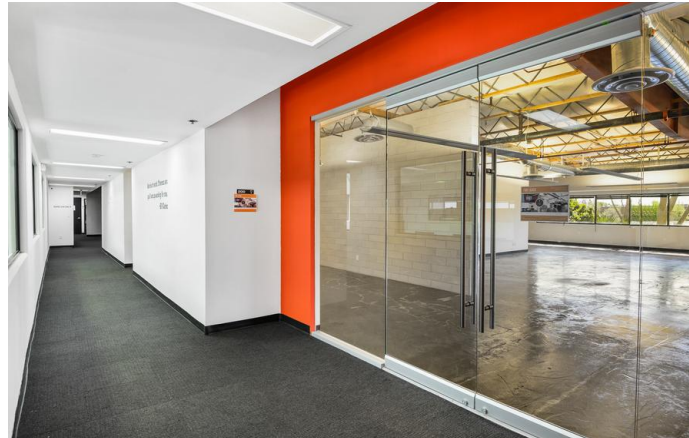
Schedule a tour! ashley@eurekabuilding.com • 949.439.7677

KEY FEATURES

- Wifi
- 24/7 access
- Ample parking
- 20 hours/month conference room usage
- Mailing services
- Free entry to Eureka community events
- Kitchen + lounge access

SUITE 200 - AVAILABLE FOR LEASE

\$2.75/SQFT • APPROX 3,035 SQFT



ABOUT THE SPACE

Located on the second floor in the Eureka Building, Suite 200 is an open-concept corner suite with large windows that provide plenty of energizing natural light.

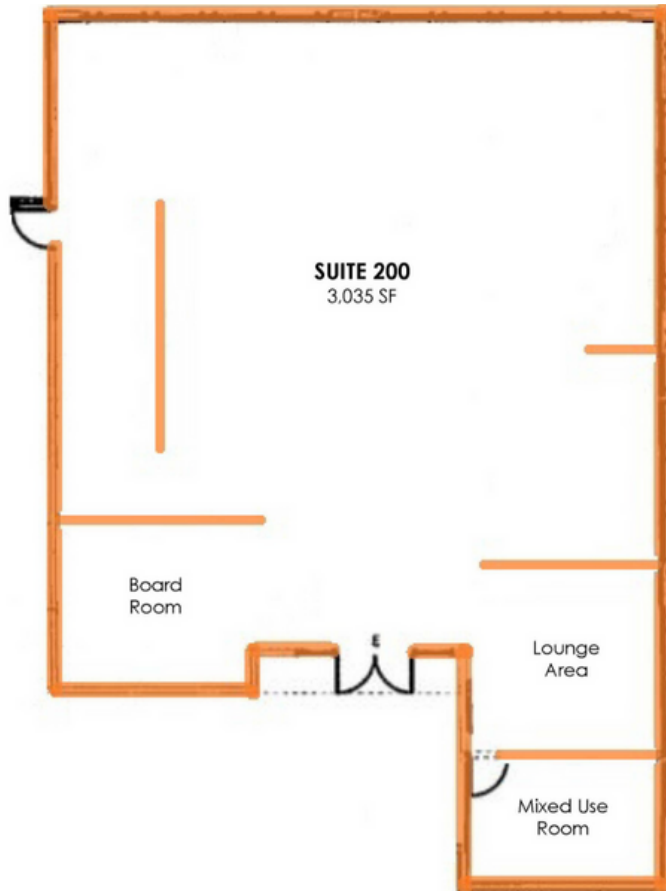
Schedule a tour! ashley@eurekabuilding.com • 949.439.7677

KEY FEATURES

- 3,035 SqFt
- Unit includes 1 Board Room + 1 mixed use room (office, storage, etc.)
- Move-in ready
- polished concrete floors + open floorplan
- Abundance of natural light
- Glass Door-entry
- Wired for multi-media

SUITE 200 CONTINUED

\$2.75/SQFT • APPROX 3,035 SQFT



ABOUT THE SPACE

Located on the second floor in the Eureka Building, Suite 200 is an open-concept corner suite with large windows that provide plenty of energizing natural light.

Schedule a tour! ashley@eurekabuilding.com • 949.439.7677

KEY FEATURES

- 3,035 SqFt
- Unit includes 1 Board Room + 1 mixed use room (office, storage, etc.)
- Move-in ready
- polished concrete floors + open floorplan
- Abundance of natural light
- Glass Door-entry
- Wired for multi-media

CONTACT US • SCHEDULE A TOUR

1621 ALTON PARKWAY • IRVINE, CA 92606



Taylor Decker • *Director*
taylor@eurekabuilding.com
949.220.6500

Ashley South • *Senior Coordinator*
ashley@eurekabuilding.com
949.439.7677