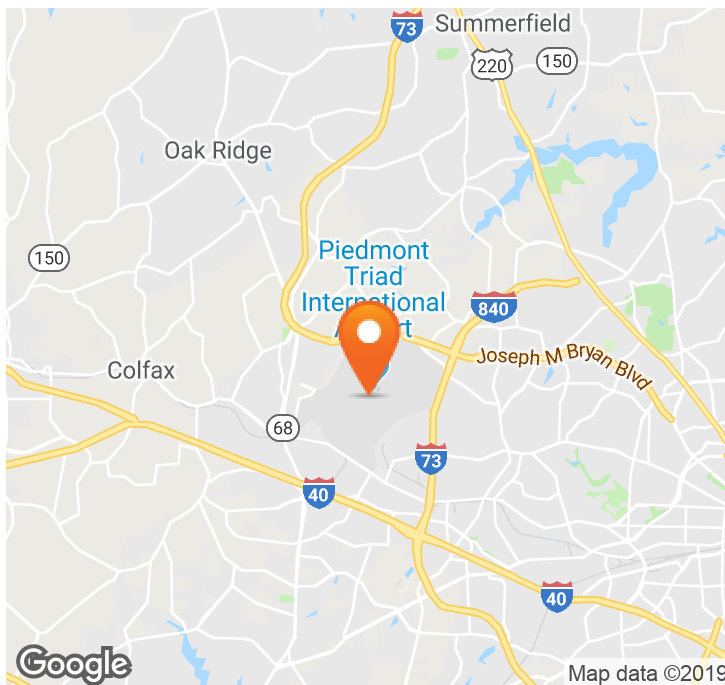


1600 NEW GARDEN

Joseph M Bryan Boulevard & New Garden Road, Greensboro, NC 27410

EXECUTIVE SUMMARY



LOCATION OVERVIEW

Endcap available with excellent visibility from both Joseph M Bryan Blvd & New Garden Rd

PROPERTY HIGHLIGHTS

- Adjacent to Verizon
- Pick-up window (not true drive-thru)
- Signage on 3 sides of building
- 24 parking spots
- Full-movement access & stoplight access

DEMOGRAPHICS

	1 MILE	3 MILES	5 MILES
2018 Population	7,044	60,315	142,406
2018 Daytime Population	2,819	20,097	86,168
2018 Median HH Income	\$76,617	\$61,777	\$56,987

EXCLUSIVE AGENT(S)

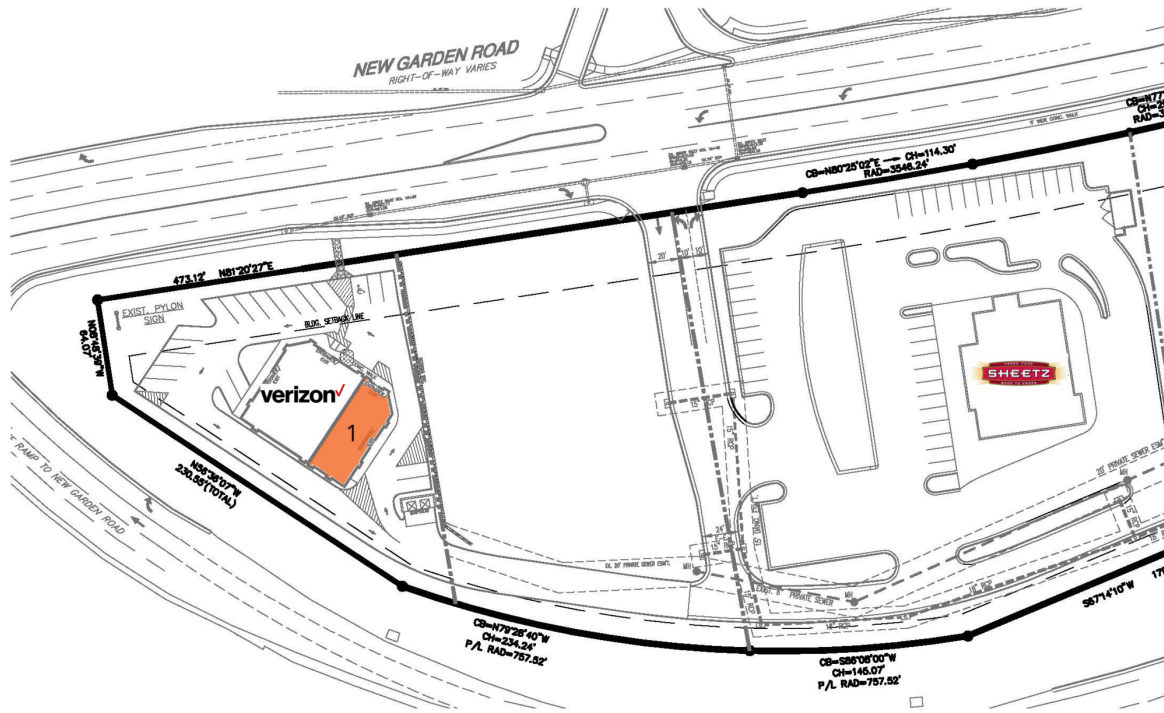
JEFF NIMMER, CCIM • jeff.nimmer@tscg.com • 919.380.8041
 TYLER QUINN • tyler.quinn@tscg.com • 919.380.8041
 TAYLOR DROUILLARD • taylor.drouillard@tscg.com • 919.380.8041



1600 NEW GARDEN

Joseph M Bryan Boulevard & New Garden Road, Greensboro, NC 27410

SITE PLAN



SUITE	TENANT NAME	SPACE SIZE
1	Available	1,770 SF

EXCLUSIVE AGENT(S)

JEFF NIMMER, CCIM • jeff.nimmer@tscg.com • 919.380.8041
 TYLER QUINN • tyler.quinn@tscg.com • 919.380.8041
 TAYLOR DROUILLARD • taylor.drouillard@tscg.com • 919.380.8041

No warranty expressed or implied has been made as to the accuracy of this information, no liability assumed for errors or omissions.

