

# Greentree

## Primary Care Center

969 GREENTREE RD,  
PITTSBURGH, PA 15220



**LEASE NOW**  
1,000 - 2,500 RSF



### PROPERTY OVERVIEW

- Situated Along I-376
- High Visibility With 80,000 Vehicles Per Day
- Parkway Signage Available
- Free Plentiful Parking
- 5 Minutes from Downtown
- Large open lobby areas
- Direct accessibility to The Pittsburgh International Airport
- 24/7 Field Technician Onsite

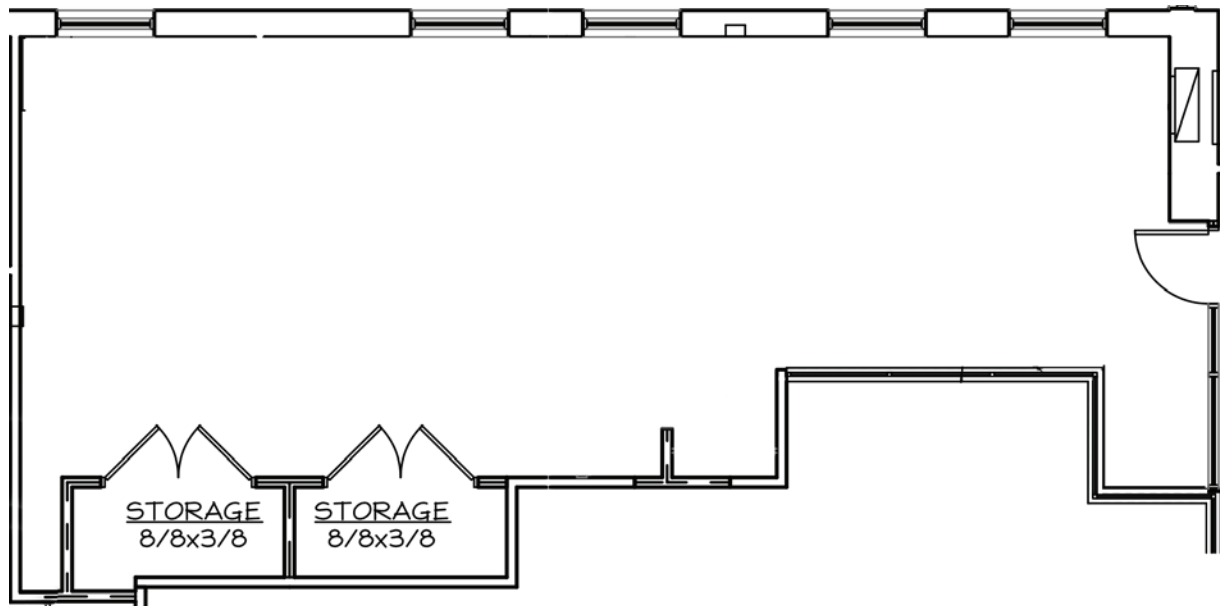
### — Walkable Amenities! —



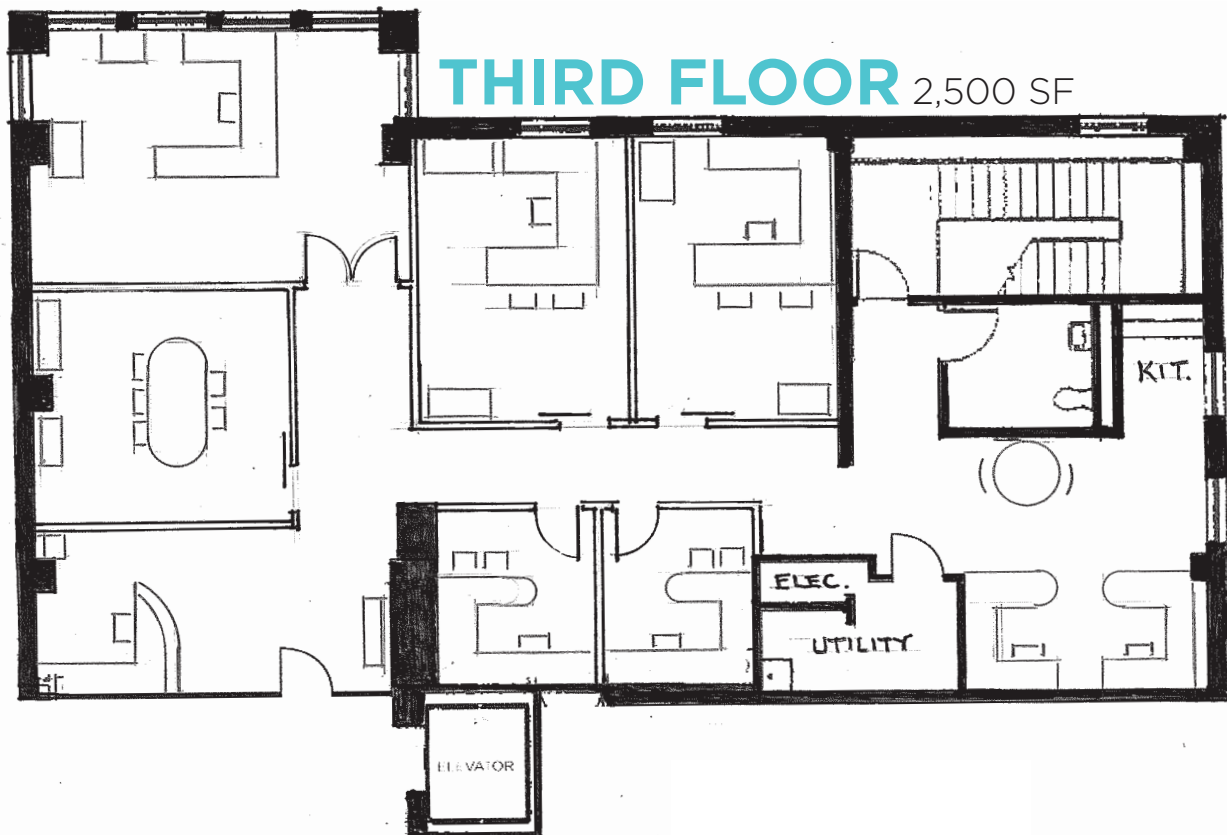
CONTACT RANIA SAKMAR: 724.544.3441 | [RSakmar@BurnsScalo.com](mailto:RSakmar@BurnsScalo.com)  
412.250.3000 | [BurnsScaloRealEstate.com](http://BurnsScaloRealEstate.com)



## FIRST FLOOR 1,000 SF - Open Floor Plan



## THIRD FLOOR 2,500 SF



**LEASE NOW**  
1,000 - 2,500 RSF



CONTACT RANIA SAKMAR: 724.544.3441 | [RSakmar@BurnsScalo.com](mailto:RSakmar@BurnsScalo.com)  
412.250.3000 | [BurnsScaloRealEstate.com](http://BurnsScaloRealEstate.com)