

FOR LEASE

8111 E. 32nd St. N., Wichita, Kansas



Northrock 6 Offices

The Northrock 6 Offices are located in the high income, high growth area of North Rock in the northeast portion of Wichita, KS. The property is accessible from the controlled intersection of 32nd Street and Rock Road. Located south of the K-96 expressway, which averages 80,000 cars per day. The Northrock 6 Offices are easily reached by all of Wichita.

Area neighbors include: Cypress Medical Park, AMC Theater, Walmart Super Center, Kohl's, Sam's Club and Bradley Fair Shopping.

*SF is exclusive of load factor

Available Space:

Suite 101 - 4,728 SF
Suite 105 - 4,797 SF
Suite 106 - 3,727 SF
Suite 200 - 2,751 SF
Suite 205 - 6,509 SF

Lease Rate: Negotiable

Lease Rate Type: Full Service

Estimated Average House Hold Income:

1 Mile - \$87,375
3 Miles - \$96,128
5 Miles - \$85,779



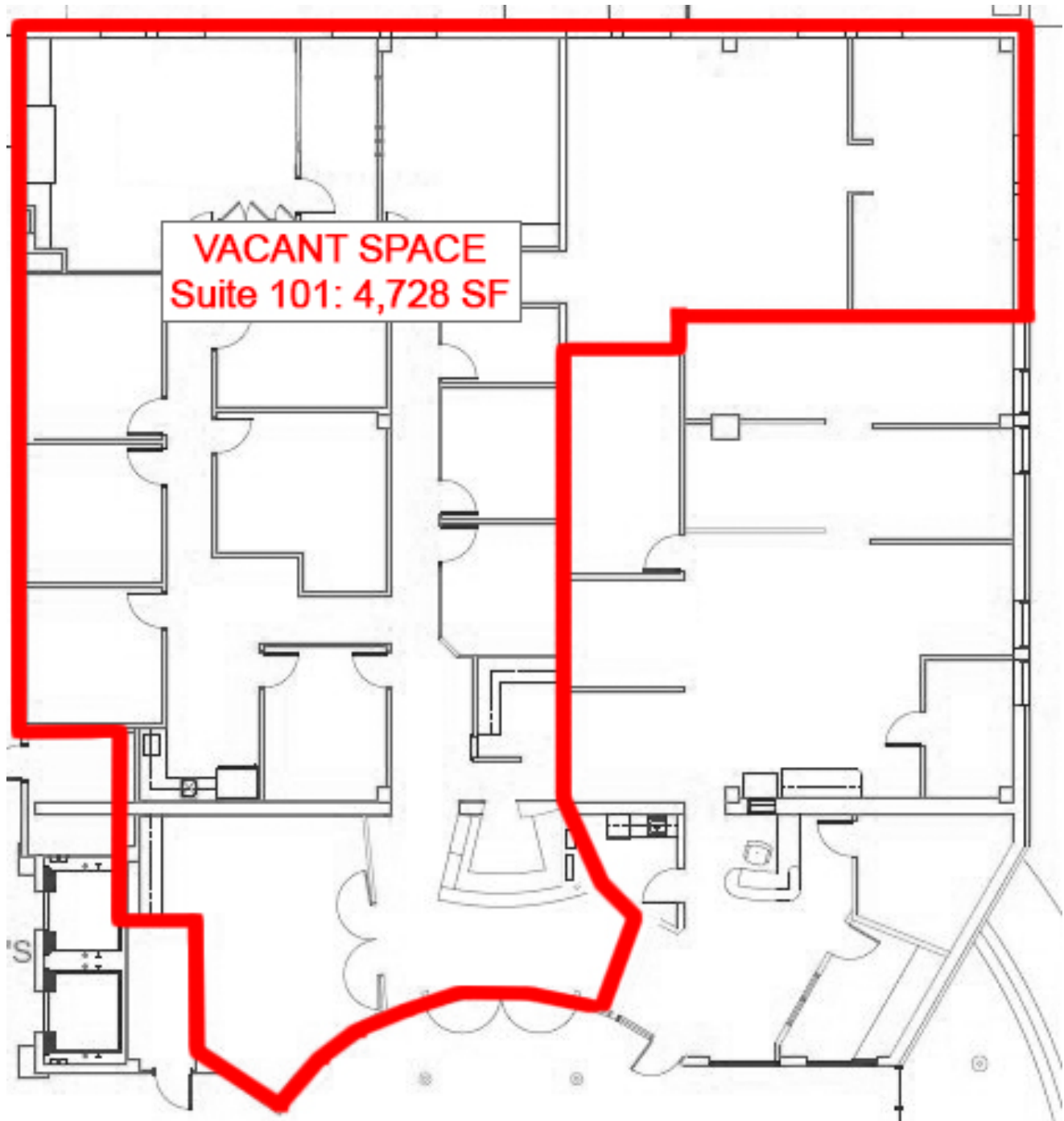
NATHAN GEORGE
nathan@occmgmt.com
T: 316-262-3331
C: 316-347-4137

8111 E. 32nd St. N., Suite 101
Wichita, KS 67226

www.occmgmt.com
occidental@occmgmt.com

FLOOR PLANS

8111 E. 32nd St. N., Wichita, Kansas



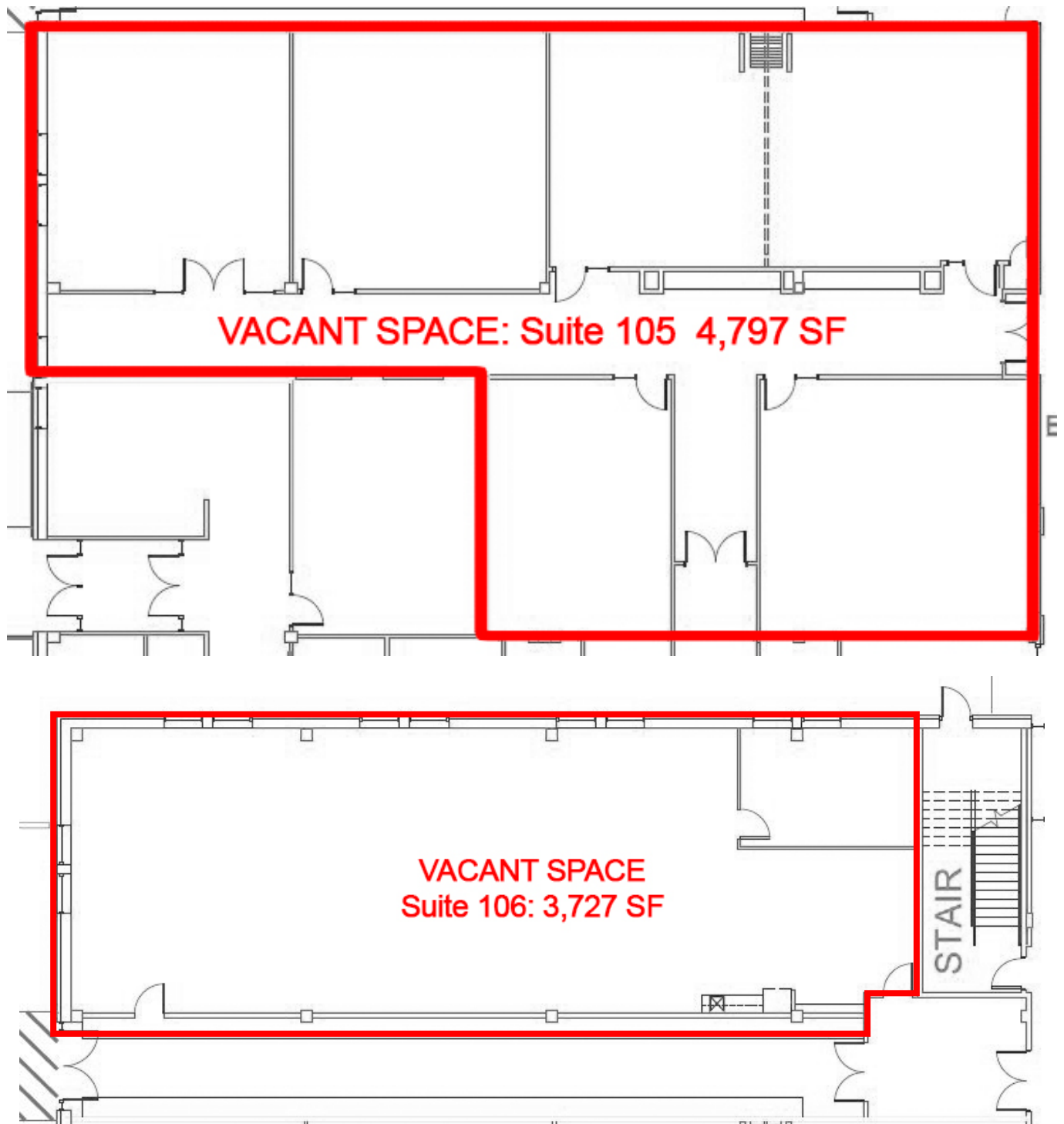
NATHAN GEORGE
nathan@occmgmt.com
T: 316-262-3331
C: 316-347-4137

8111 E. 32nd St. N., Suite 101
Wichita, KS 67226

www.occmgmt.com
occidental@occmgmt.com

FLOOR PLANS

8111 E. 32nd St. N., Wichita, Kansas



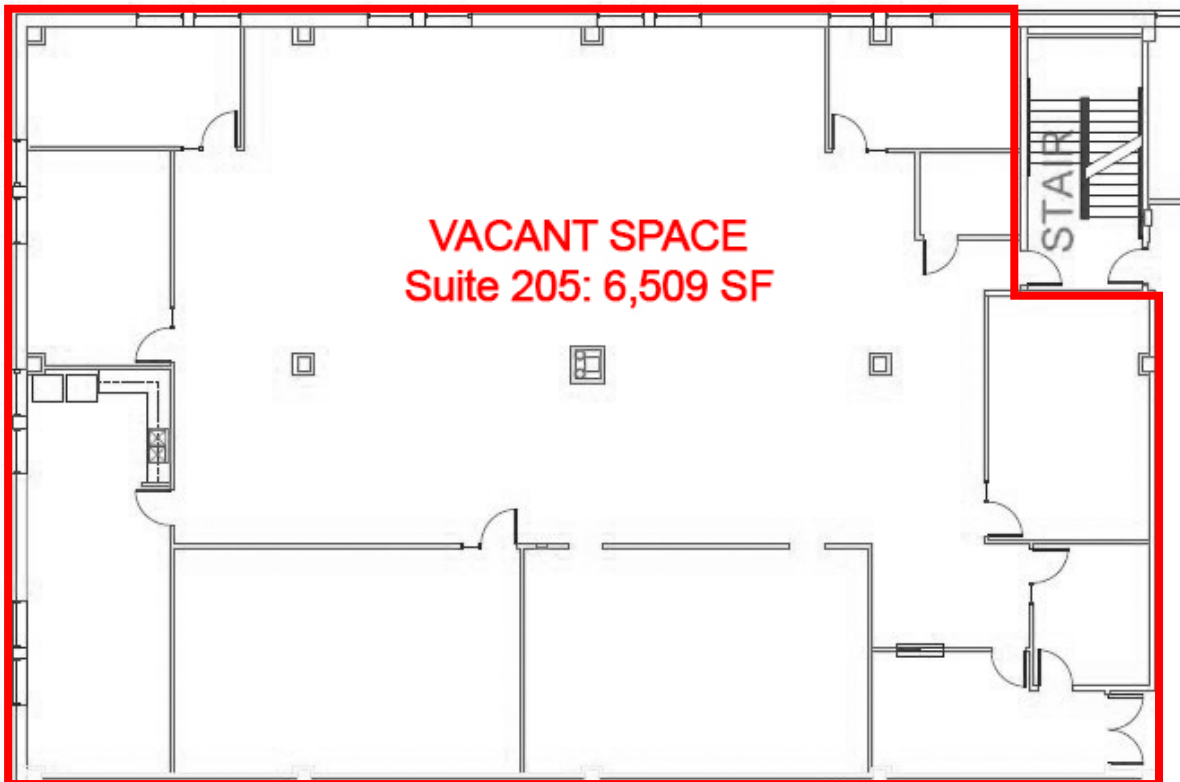
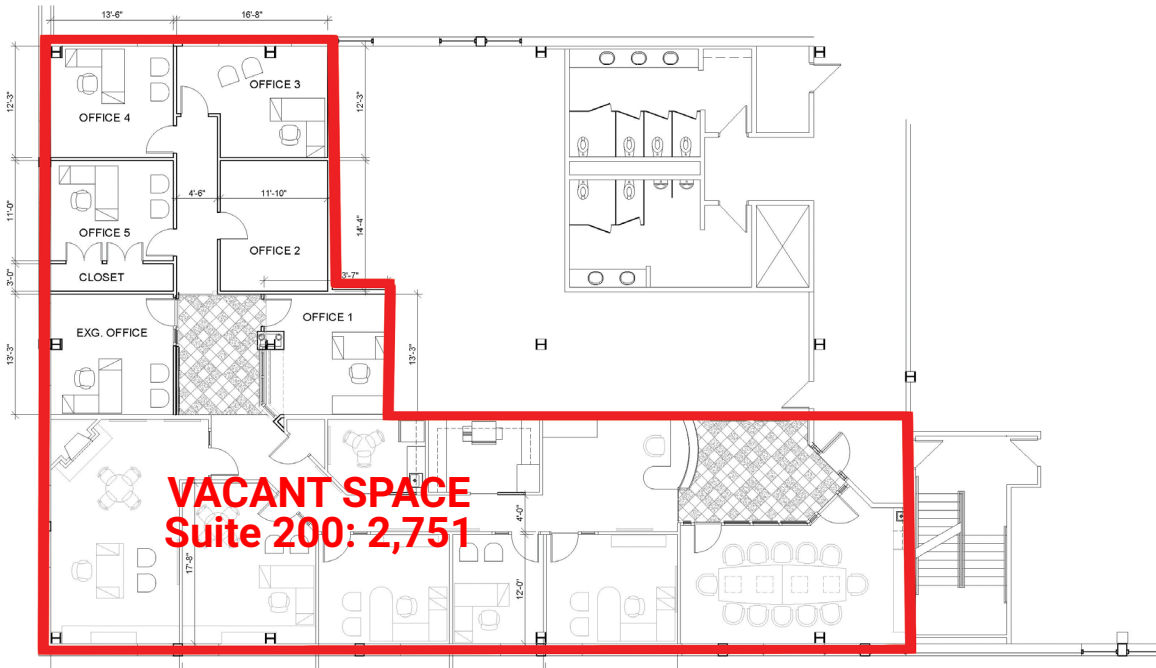
NATHAN GEORGE
nathan@occmgmt.com
T: 316-262-3331
C: 316-347-4137

8111 E. 32nd St. N., Suite 101
Wichita, KS 67226

www.occmgmt.com
occidental@occmgmt.com

FLOOR PLANS

8111 E. 32nd St. N., Wichita, Kansas



NATHAN GEORGE
nathan@occmgmt.com
T: 316-262-3331
C: 316-347-4137

AERIAL

8111 E. 32nd St. N., Wichita, Kansas



NATHAN GEORGE
nathan@occmgmt.com
T: 316-262-3331
C: 316-347-4137

8111 E. 32nd St. N., Suite 101
Wichita, KS 67226

www.occmgmt.com
occidental@occmgmt.com