



FOR LEASE

Valley Creative Center

2249 Zanker Road & 2390 Bering Drive, San Jose, CA

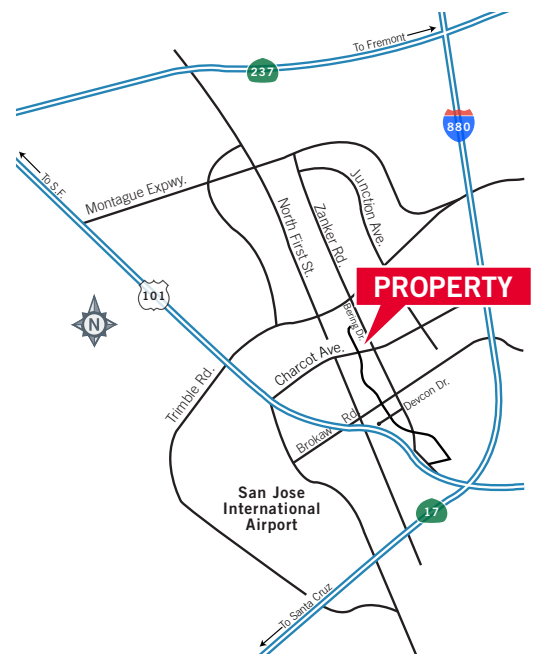


HIGHLIGHTS

2390 Bering: ±7,684 SF - Available Now

2249 Zanker: ±15,775 SF - Available 5/1/2020

- Monument Signage Available
- New Exterior Facade Upgrades Recently Completed
- Attractive Campus Environment with Ample Surface Parking (±3.56/1,000)
- 2390 Bering - 200 Amps @ 480V
- 2249 Zanker - 600 Amps @ 480V
- Grade-Level Door
- Highly Desirable Golden Triangle Location
- Close Proximity to 101, 880 and 87
- Minutes from San Jose International Airport and Downtown San Jose
- Walking Distance to Light Rail Station
- Short Walk to Restaurants and Retail Amenities



Jon DeCoite
Senior Director
+1 408 615 3408
jon.decoite@cushwake.com
LIC #01471300

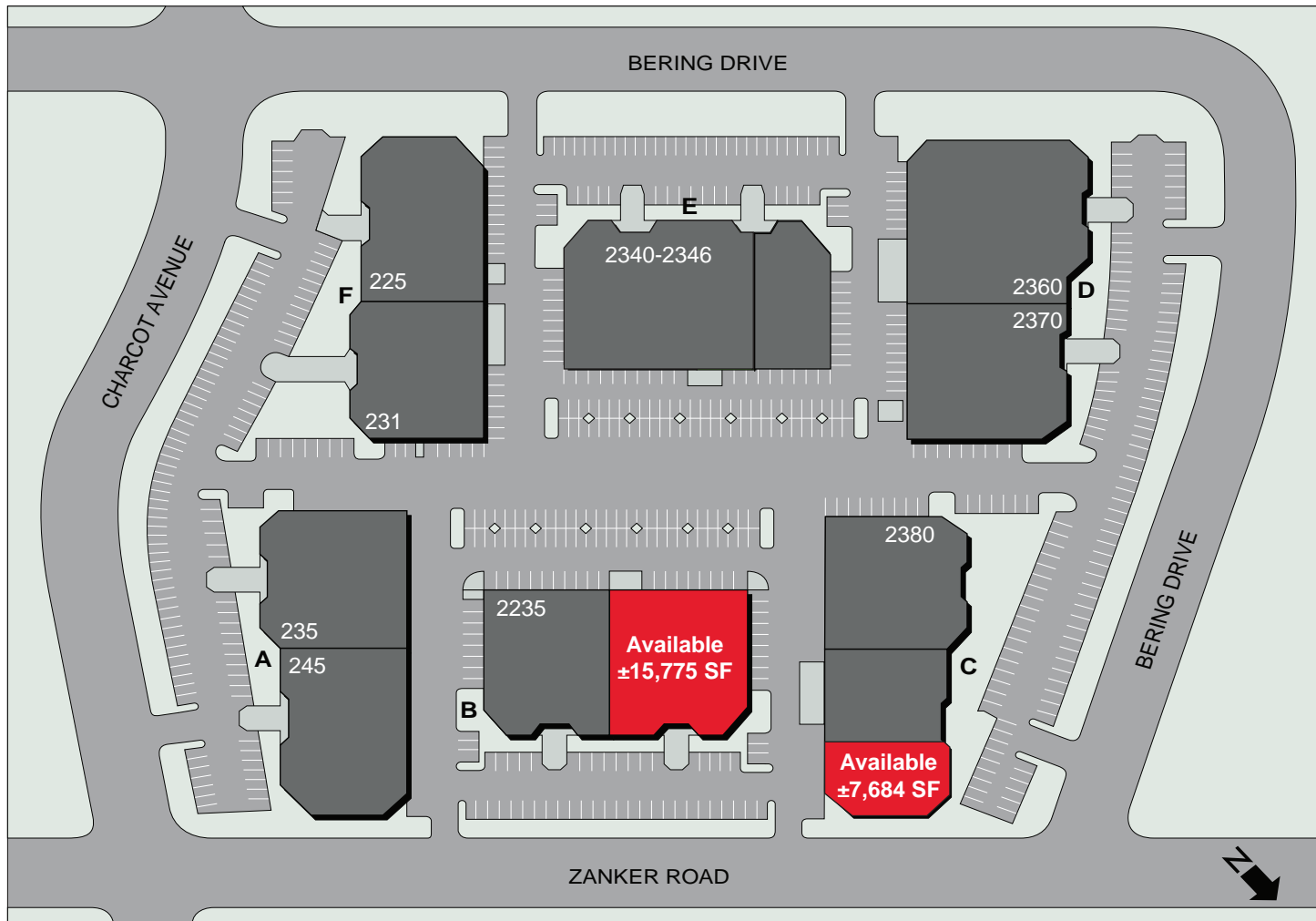
Alan Guterman
Senior Director
+1 408 615 3414
alan.guterman@cushwake.com
LIC #00884495

Kelly Yoder
Director
+1 408 615 3427
kelly.yoder@cushwake.com
LIC #001821117

Steve Horton
Executive Vice Chairman
+1 408 615 3412
steve.horton@cushwake.com
LIC #01127340



SITE PLAN



Jon DeCoite
Senior Director
+1 408 615 3408
jon.decoite@cushwake.com
LIC #01471300

Alan Guterman
Senior Director
+1 408 615 3414
alan.guterman@cushwake.com
LIC #00884495

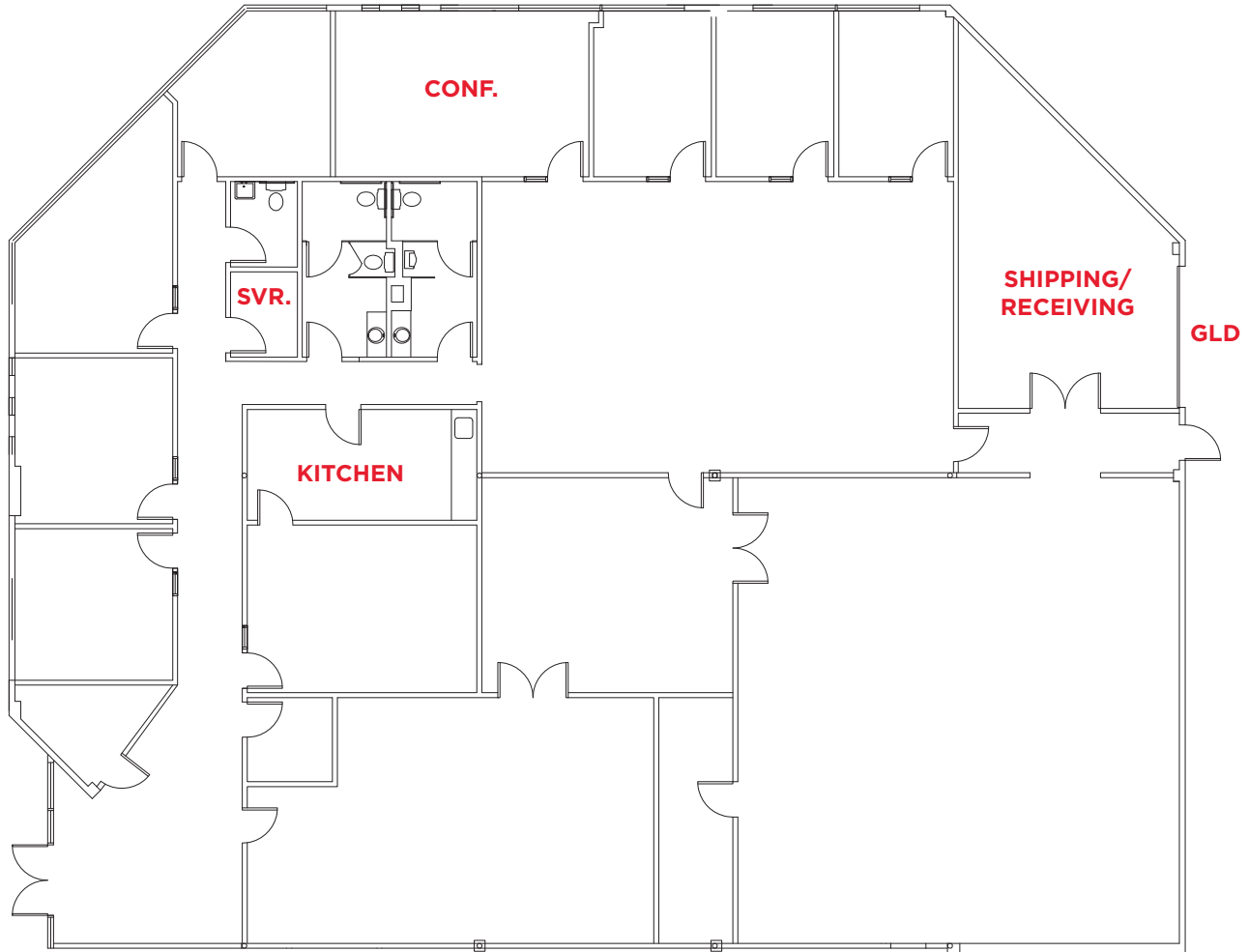
Kelly Yoder
Director
+1 408 615 3427
kelly.yoder@cushwake.com
LIC #001821117

Steve Horton
Executive Vice Chairman
+1 408 615 3412
steve.horton@cushwake.com
LIC #01127340



FLOOR PLAN

2390 Bering Drive: ±7,684 SF



Jon DeCoite
Senior Director
+1 408 615 3408
jon.decoite@cushwake.com
LIC #01471300

Alan Guterman
Senior Director
+1 408 615 3414
alan.guterman@cushwake.com
LIC #00884495

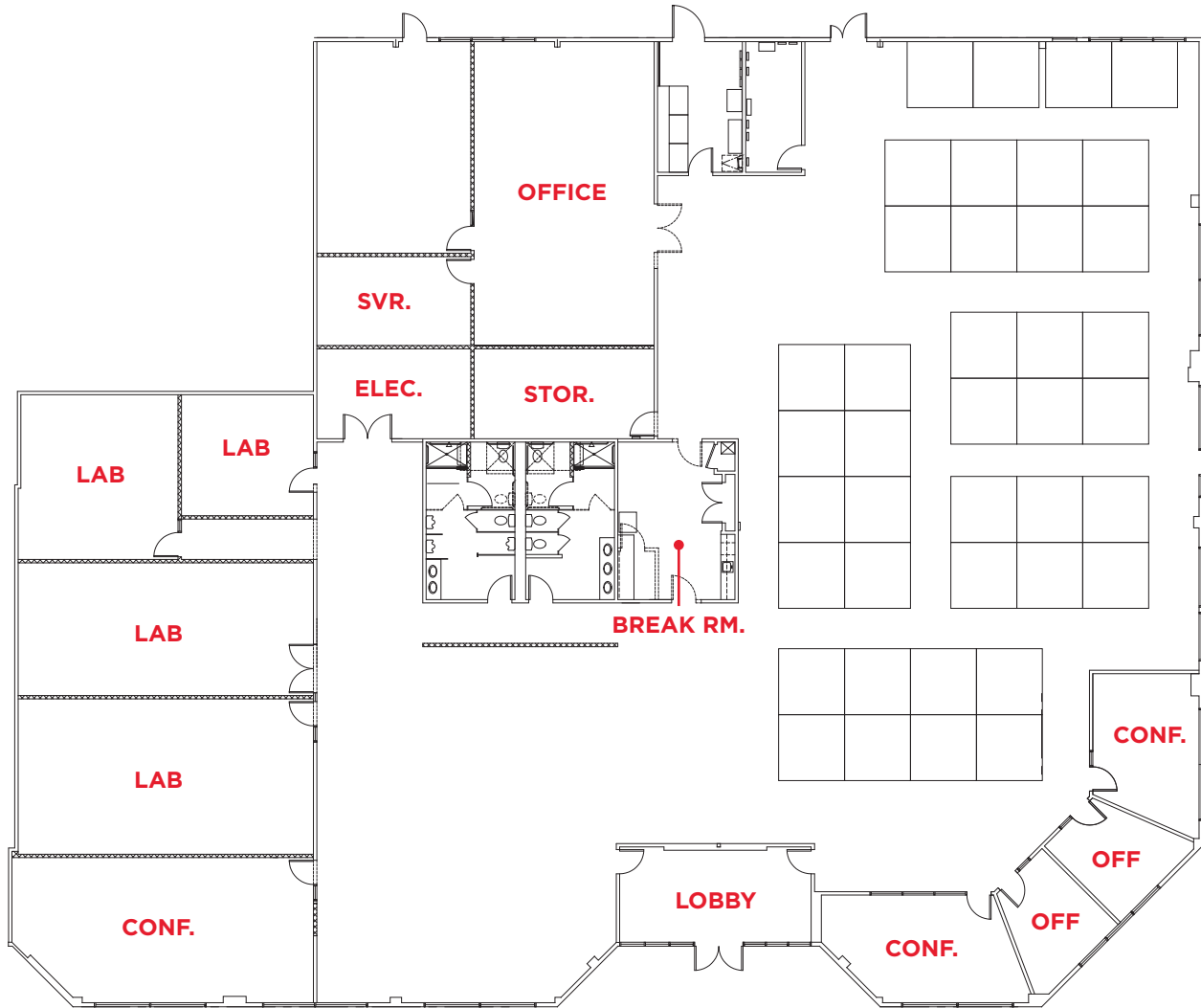
Kelly Yoder
Director
+1 408 615 3427
kelly.yoder@cushwake.com
LIC #001821117

Steve Horton
Executive Vice Chairman
+1 408 615 3412
steve.horton@cushwake.com
LIC #01127340



FLOOR PLAN

2249 Zanker Road: ±15,775 SF



Jon DeCoite
Senior Director
+1 408 615 3408
jon.decoite@cushwake.com
LIC #01471300

Alan Guterman
Senior Director
+1 408 615 3414
alan.guterman@cushwake.com
LIC #00884495

Kelly Yoder
Director
+1 408 615 3427
kelly.yoder@cushwake.com
LIC #001821117

Steve Horton
Executive Vice Chairman
+1 408 615 3412
steve.horton@cushwake.com
LIC #01127340



AMENITIES



Jon DeCoite
Senior Director
+1 408 615 3408
jon.decoite@cushwake.com
LIC #01471300

Alan Guterman
Senior Director
+1 408 615 3414
alan.guterman@cushwake.com
LIC #00884495

Kelly Yoder
Director
+1 408 615 3427
kelly.yoder@cushwake.com
LIC #001821117

Steve Horton
Executive Vice Chairman
+1 408 615 3412
steve.horton@cushwake.com
LIC #01127340

