

Eagle Park



Anderson • Madison County, Indiana

DRIVE TIME



Eagle Park Information –Anderson (Madison County) Indiana

Location

Name: Eagle Park
Street: SR 109 S & E. CR 400 S.
City/Town: Anderson, IN 46013
County: Madison
Township: Adams
In Corp. Limits: Yes

Description

Total Acreage: up to 230
Subdividable: Yes
Min Available: 5 acres
Zoning Type: I-3 Industrial
Topography: Flat
100 Yr. Flood Plain: No
Price: \$45,000/acre

Fire

Fire Protection: City of Anderson
Fire Rating: 3
Wetlands On-Site: None
Environmental Phase I Avail.

Highway

Interstate: I-69 (1 mile to Exit 226)
4-Lane Highway: SR 9 (1 mile)
2-Lane Highway: SR 109 (On-Site)

Rail

Railroad: CSX Rail Mainline runs along the East side

Port

Nearest Port: Jeffersonville, IN and Cincinnati, OH
Miles to Port: 105

Airport

Comm. Airport: Indianapolis International Airport
Mi. to Comm. Airport: 55 miles
Local Airport: Anderson Municipal
Mi. to Local Airport: 6 miles

Sewer

Supplier: City of Anderson
Main Size: 10 inch main
Main distance: Onsite
System Capacity: 21.235 MGD
Average Daily Use: 13.00 MGD

Water

Supplier: City of Anderson
Main Size: 16 inch
Main distance: Onsite
System Capacity: 16 MGD
Storage Capacity: 4.5 Mil Gal. Overhead
Average Daily Use: 10 MGD

Gas

Supplier: Vectren
Main Size: 8" inch feeding a 3" 40 psi
Main distance: Onsite

Electric

Supplier: Anderson Municipal
Capacity: 10 MW by end of 2019
Distribution Voltage: 13 KV
Dist. distance: Onsite
Transmission Voltage: 34 KV
Transmission Distance: 2500 feet

Environmental

Stormwater: Ditch system to county drain
Wetlands: none
Air quality: Attainment area

Telecommunications

Telephone Supplier: GTE (Mechanicsburg)
Tel. Line distance: Onsite
Cable TV Supplier: Insight Cable

Contact

Contact Company: Corporation for Economic Development
Contact Name: Rob Sparks
Contact Phone: 765-642-1860
Email: robsparks@cedanderson.com

EAGLE PARK ANDERSON, IN



Exit 226

EAST 400 SOUTH

INDIANA
109

90 ACRES

Lat./Long. 40.037236,-85.650804

Approx. 4550 100 E.
Anderson, IN 46013

140 ACRES

Lat./Long. 40.037544,-85.642672

Approx. 1450 E. 500 S.
Anderson, IN 46013

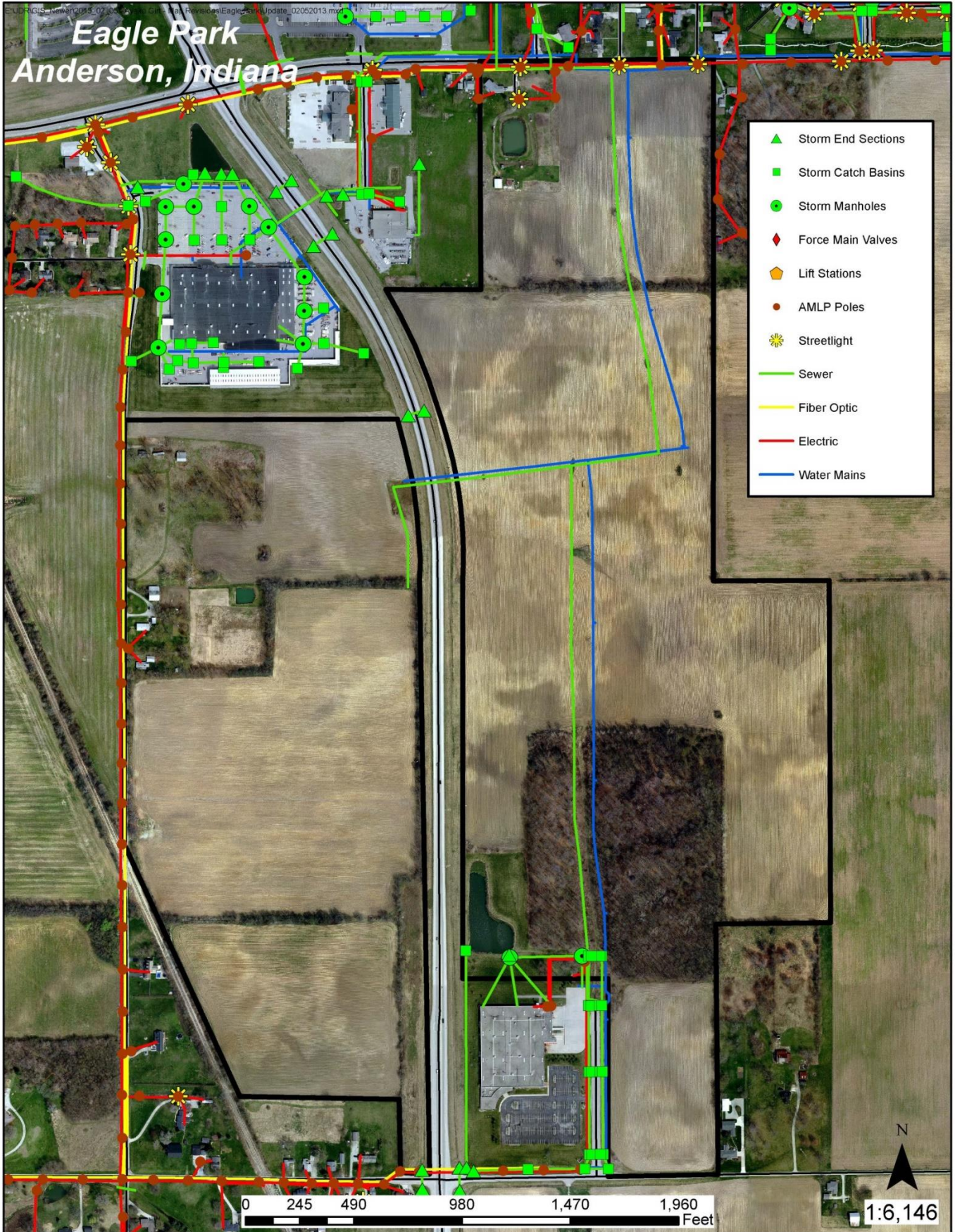
CSX
RAIL
MAINLINE

EAST 500 SOUTH

INDIANA
109



Eagle Park Utilities



Location Maps

