

Heywood Avenue
Spartanburg, SC 29302



CONTACT Ben Hines CFP, CCIM 864-542-4777

benhines@spencerhines.com 

Andy Hayes 864-706-0189

ahayes@spencerhines.com 

WWW.SPENCERHINES.COM

COMMERCIAL REAL ESTATE SALES, LEASING, & INVESTMENTS

380 S. Pine Street, Spartanburg, SC - 864.583.1001

No warranty or representation, expressed or implied, is made to the accuracy of the information contained herein, and the same is submitted subject to errors, omissions, change of price, rental or other conditions, imposed by the principles.

- 4± acres located on Heywood Avenue
- Tax Map #: 7-21-04-028.00
- 227'± of road frontage on Heywood Ave.
- Located next to Spartanburg Regional Family Medicine.
- Zoned LOD – Limited Office District
- Access from Heywood Ave. & easement from Garrett St.

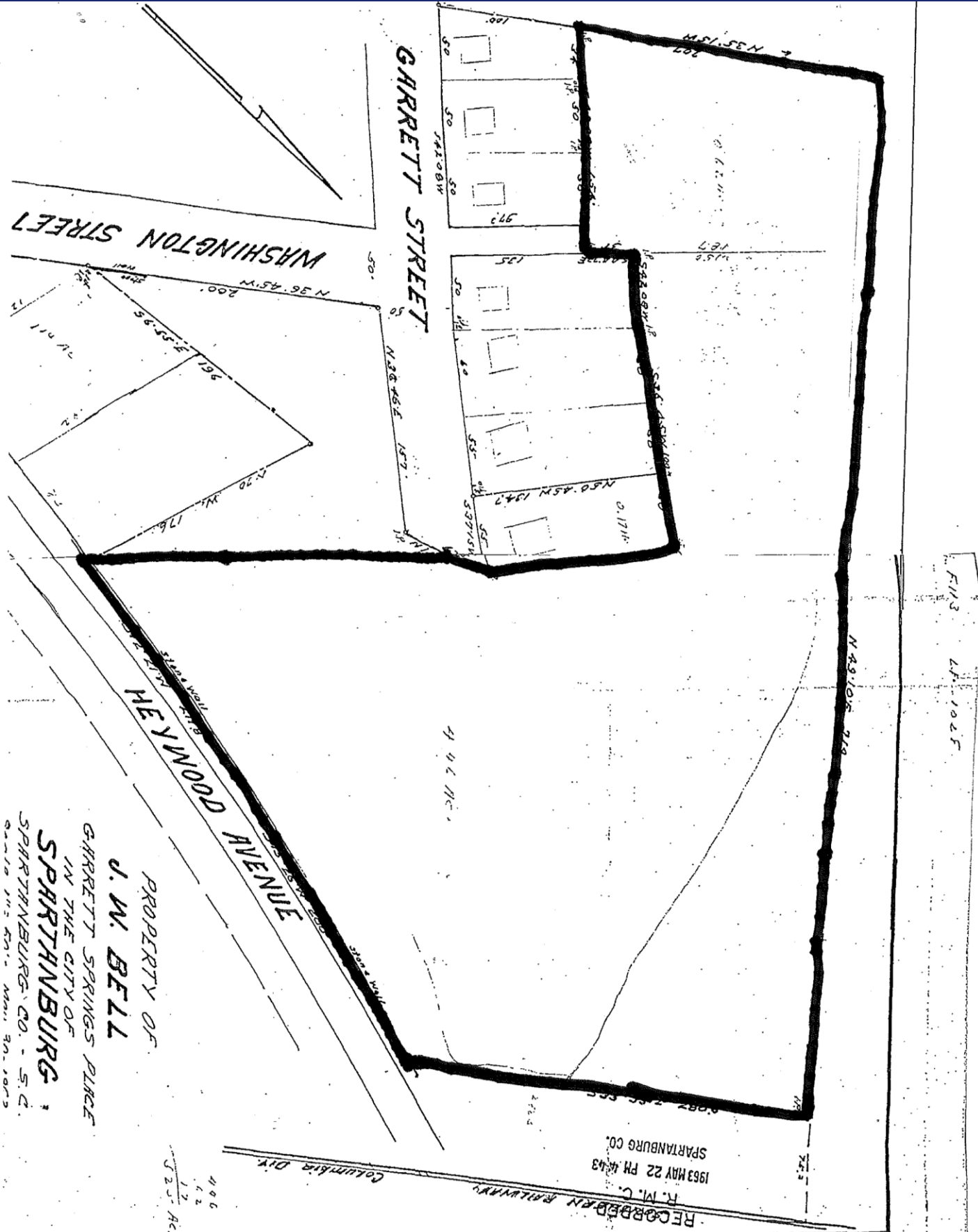
SALE PRICE:
\$10,000/acre



SPENCER/HINES
 P R O P E R T I E S

Land

Heywood Avenue
 Spartanburg, SC 29302



PROPERTY OF
J. W. BELL
 GARRETT SPRINGS PLACE
 IN THE CITY OF
SPARTANBURG
 SPARTANBURG CO. - S.C.
 52.5 Ac.
 406
 1.2
 52.5 Ac.

FILED
 4/1/1025

RECORDED RAILWAY
 R. M. C.
 1963 MAY 22 PM 4:43
 SPARTANBURG CO.