

OFFICE SPACE FOR LEASE



Located in a park like setting off of Newport Way, next to Tibbets Park in Issaquah. Locally owned, well maintained, and an ideal location for businesses needing the flexibility of both office and warehouse space.

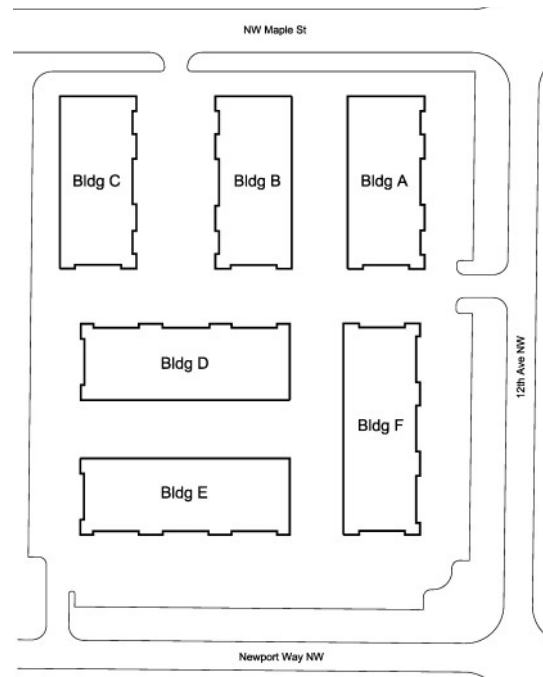
Only Two Suites Available in Park: 1,974 & 2,131 sqft

Office Rate: \$1.75 /sqft

Whse Rate: \$1.00 /sqft

NNN: \$0.33 /sqft

<http://royalcommercialcorp.com/listings/cascade-business-park>



1045—1145 12th Ave NW | Issaquah | Washington 98027

For more information:

Matthew Royal

matthew@royalcommercialcorp.com

Tara Armendariz

tara@royalcommercialcorp.com



ROYAL COMMERCIAL CORP

611 Market Street | Suite 8 | Kirkland | WA 98033

425-952-4000 | www.royalcommercialcorp.com



<http://royalcommercialcorp.com/listings/for-lease/office/cascade-business-park>

Park Highlights

- Six Building Complex totaling approx. 96,000 sqft Office/Whse & Flex Space
- Immediate access to I-90 & SR-900 and next to Regional Transit Center
- Park like setting off of Newport Way, next to Tibbets Park
- Locally Owned and Managed
- Professionally Maintained facilities
- Flexible Rates / Configurations
- Ample / Free Parking

1045—1145 12th Ave NW | Issaquah | Washington 98027

For more information:

Matthew Royal

matthew@royalcommercialcorp.com

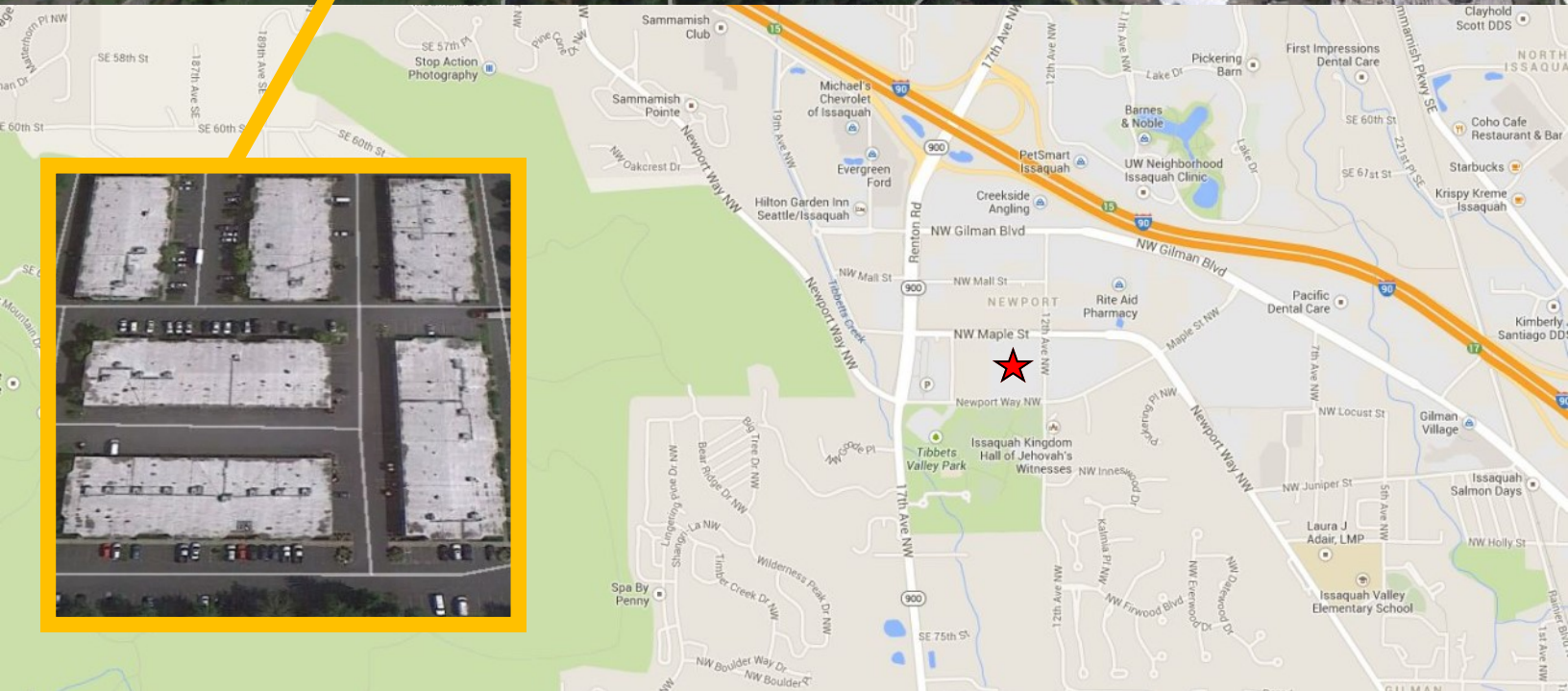
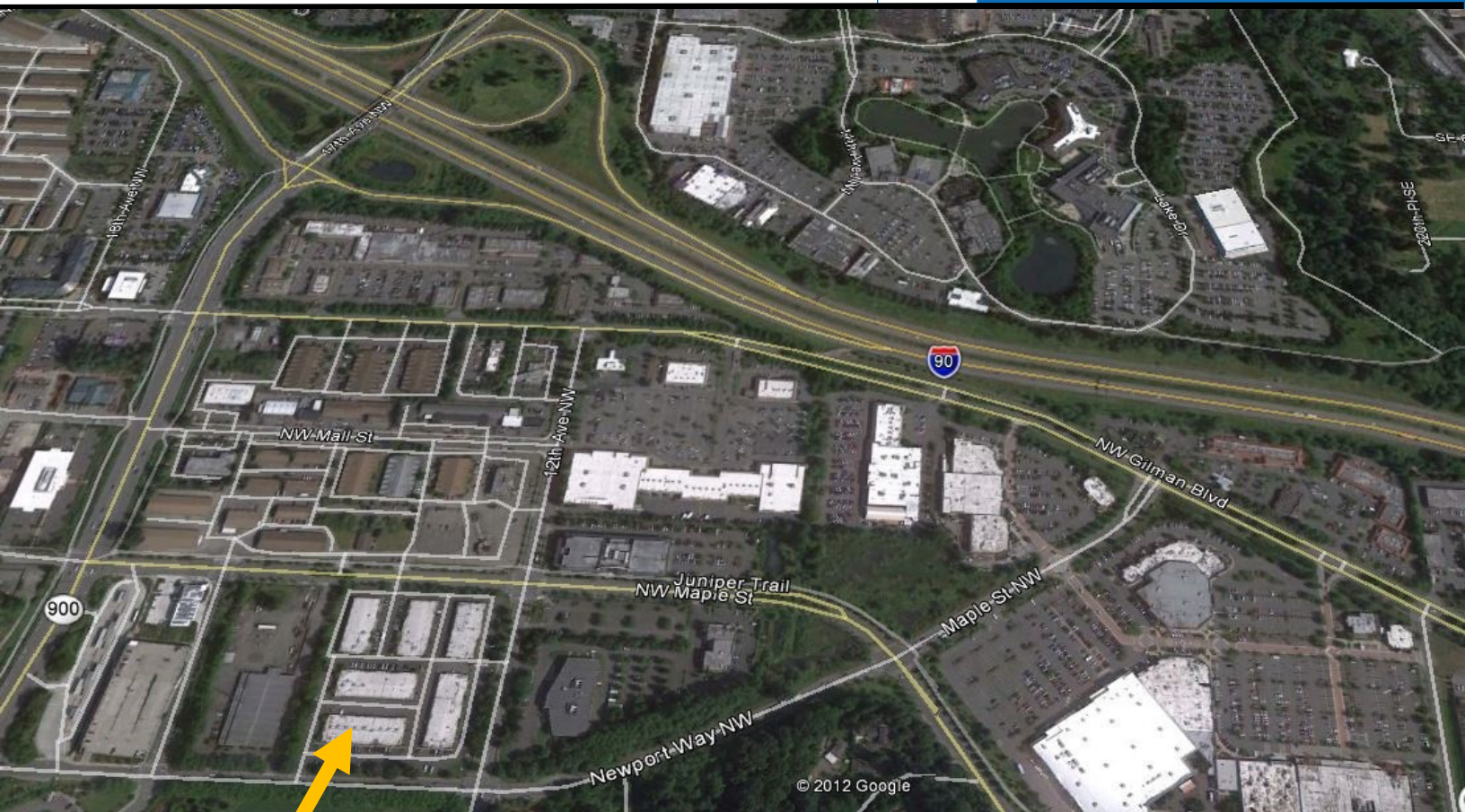
Tara Armendariz

tara@royalcommercialcorp.com



ROYAL COMMERCIAL CORP

611 Market Street | Suite 8 | Kirkland | WA 98033
425-952-4000 | www.royalcommercialcorp.com



1045—1145 12th Ave NW | Issaquah | Washington 98027

For more information:

Matthew Royal

matthew@royalcommercialcorp.com

Tara Armendariz

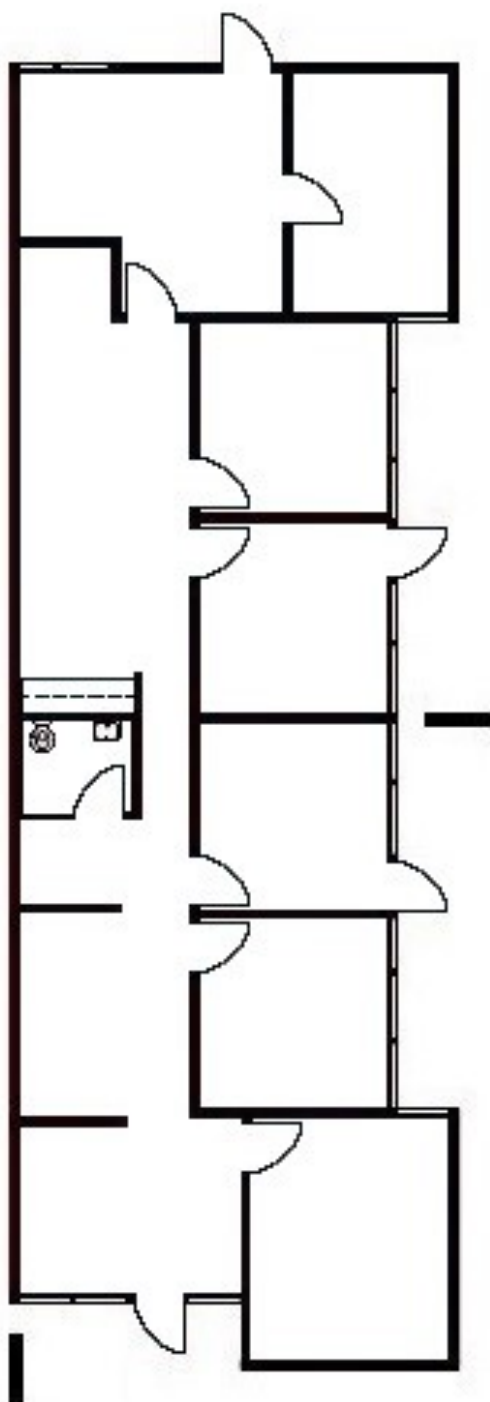
tara@royalcommercialcorp.com



ROYAL COMMERCIAL CORP

611 Market Street | Suite 8 | Kirkland | WA 98033

425-952-4000 | www.royalcommercialcorp.com



Suite D-1

2,131 sqft Office

Available: 3/1/2017

<http://royalcommercialcorp.com/listings/for-lease/office/cascade-business-park>

1045—1145 12th Ave NW | Issaquah | Washington 98027

For more information:

Matthew Royal

matthew@royalcommercialcorp.com

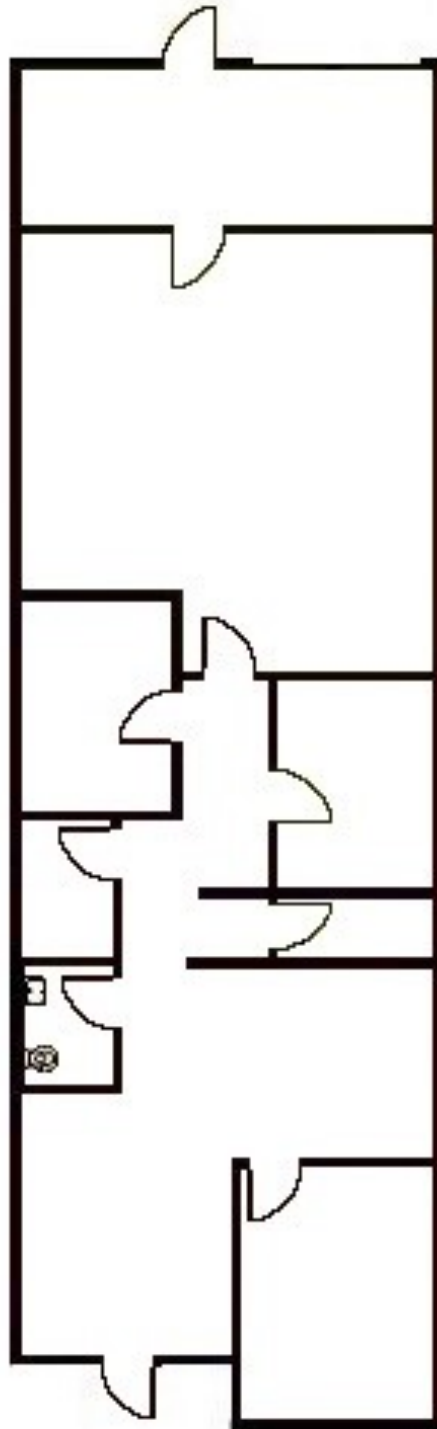
Tara Armendariz

tara@royalcommercialcorp.com



ROYAL COMMERCIAL CORP

611 Market Street | Suite 8 | Kirkland | WA 98033
425-952-4000 | www.royalcommercialcorp.com



Suite E-7

1,749 sqft Office

225 sqft Warehouse

1,974 sqft Total

<http://royalcommercialcorp.com/listings/for-lease/office/cascade-business-park>

1045—1145 12th Ave NW | Issaquah | Washington 98027

For more information:

Matthew Royal

matthew@royalcommercialcorp.com

Tara Armendariz

tara@royalcommercialcorp.com



ROYAL COMMERCIAL CORP

611 Market Street | Suite 8 | Kirkland | WA 98033

425-952-4000 | www.royalcommercialcorp.com