



**FOR LEASE | ± 2,410 SF**  
**HIGH-IMAGE OFFICE/CREATIVE SPACE**

28516 Constellation Road | Valencia, CA

**YAIR HAIMOFF, SIOR**  
Executive, Managing Director  
818.203.5429  
DRE License #01414758

**MATT SREDEN**  
Vice President  
661.755.6654  
DRE License #01907628

**ANDREW GHASSEMI**  
Senior Vice President  
661.212.3956  
DRE License #01963548

[spectrumcre.com](http://spectrumcre.com)

No warranty, express or implied, is made as to the accuracy of the information contained herein. This information is submitted subject to errors, omissions, change of price, rental or other conditions, withdrawal without notice, and is subject to any special listing conditions imposed by our principals. Cooperating brokers, buyers, tenants and other parties who receive this document should not rely on it, but should use it as a starting point of analysis, and should independently confirm the accuracy of the information contained herein through a due diligence review of the books, records, files and documents that constitute reliable sources of the information described herein. Spectrum Commercial Real Estate, Inc., CA DRE #02042805

# FOR LEASE | HIGH-IMAGE OFFICE/CREATIVE SPACE

28516 Constellation Road | Valencia, CA

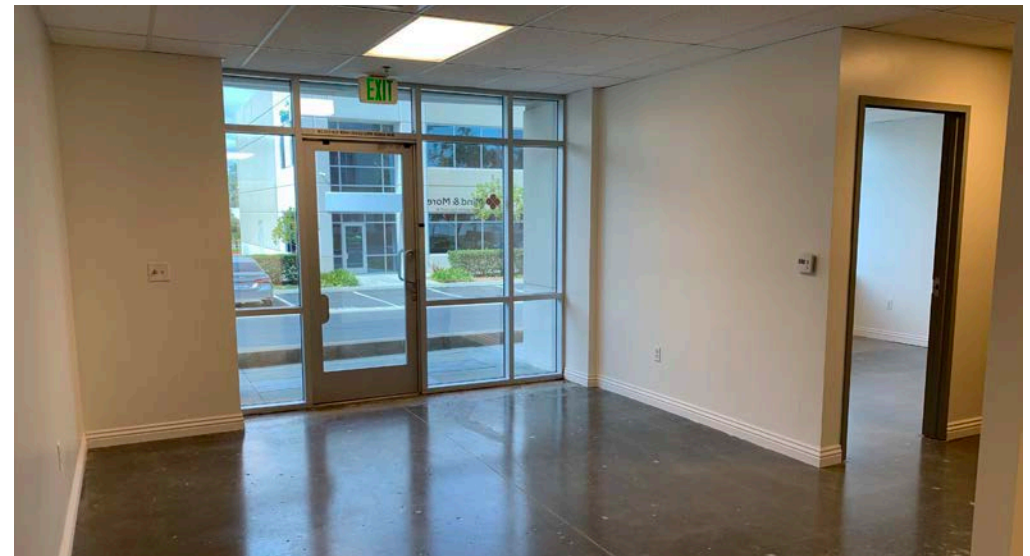
Features

## PROPERTY FEATURES

- Located within Spectrum Business Center
- High Image Office/Creative Space
- 5 Offices, Creative Space and Break Room
- Well Designed Office Layout
- Recently Renovated: Polished Concrete (1st Floor), Laminate Wood Flooring (2nd Floor), Double Insulated Drywall within Offices.
- High Ceilings
- Ample Power, Ample Parking
- Business Campus Environment
- Minutes from Valencia Town Center Amenities, Hyatt Hotel and Conference Center and Freeway On-ramp

## LOCATION HIGHLIGHTS

- Situate Within the Prestigious Spectrum Business Center
- Close Proximity to Valencia Town Center Amenities, Restaurants, Hyatt Hotel and Conference Center, Golf Courses, Daycare Centers and Health/Fitness Centers
- Located in Prime Valencia Location Within the City of Santa Clarita Jurisdiction
- Quickly Accessed from Anywhere in the Submarket and Features Easy Access to 5, 126 and 14 Freeway Onramps



### YAIR HAIMOFF, SIOR

Executive, Managing Director  
818.203.5429  
yhaimoff@spectrumcre.com  
DRE License #01414758

### MATT SREDEN

Vice President  
661.755.6654  
msreden@spectrumcre.com  
DRE License #01907628

### ANDREW GHASSEMI

Senior Vice President  
661.212.3956  
aghassemi@spectrumcre.com  
DRE License #01963548

[spectrumcre.com](http://spectrumcre.com)

**SPECTRUM**  
COMMERCIAL REAL ESTATE, INC.

No warranty, express or implied, is made as to the accuracy of the information contained herein. This information is submitted subject to errors, omissions, change of price, rental or other conditions, withdrawal without notice, and is subject to any special listing conditions imposed by our principals. Cooperating brokers, buyers, tenants and other parties who receive this document should not rely on it, but should use it as a starting point of analysis, and should independently confirm the accuracy of the information contained herein through a due diligence review of the books, records, files and documents that constitute reliable sources of the information described herein. Spectrum Commercial Real Estate, Inc., CA DRE #02042805



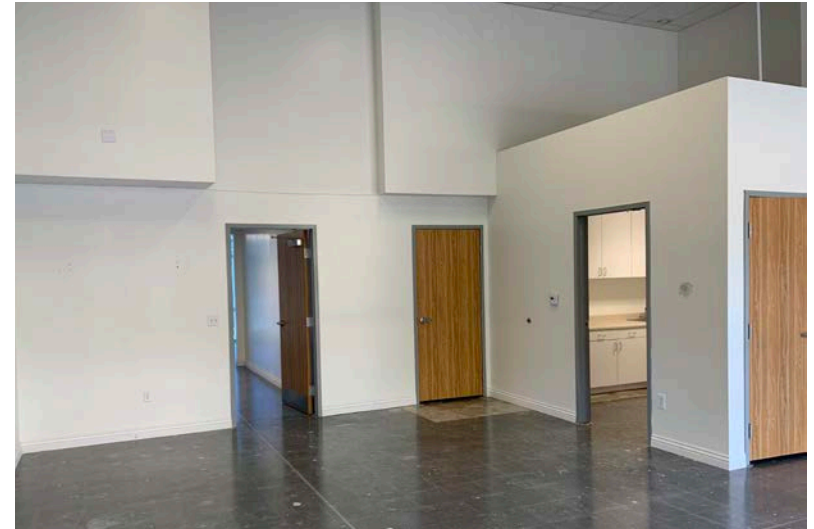
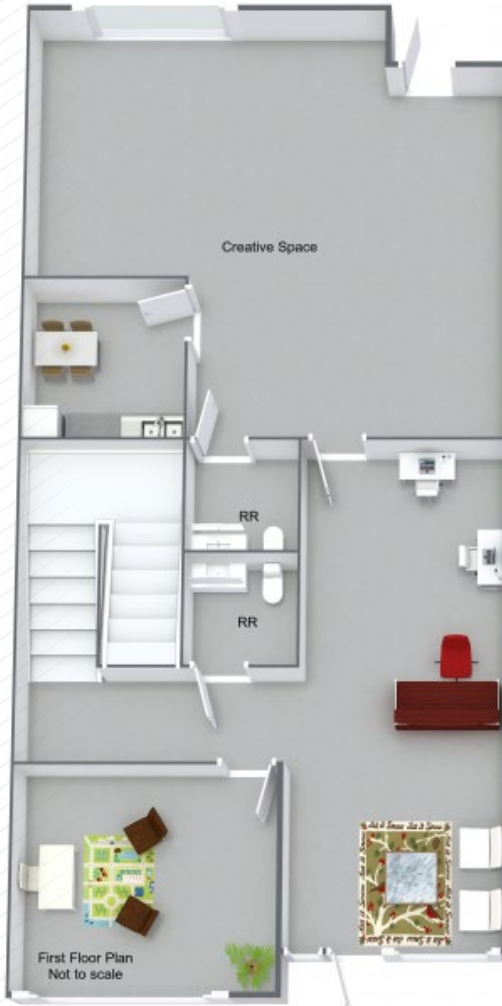
# FOR LEASE | HIGH-IMAGE OFFICE/CREATIVE SPACE

28516 Constellation Road | Valencia, CA

Floor Plan

## FIRST FLOOR

## SECOND FLOOR



**YAIR HAIMOFF, SIOR**

Executive, Managing Director  
818.203.5429  
yhaimoff@spectrumcre.com  
DRE License #01414758

**MATT SREDEN**

Vice President  
661.755.6654  
msreden@spectrumcre.com  
DRE License #01907628

**ANDREW GHASSEMI**

Senior Vice President  
661.212.3956  
aghassemi@spectrumcre.com  
DRE License #01963548

[spectrumcre.com](http://spectrumcre.com)

No warranty, express or implied, is made as to the accuracy of the information contained herein. This information is submitted subject to errors, omissions, change of price, rental or other conditions, withdrawal without notice, and is subject to any special listing conditions imposed by our principals. Cooperating brokers, buyers, tenants and other parties who receive this document should not rely on it, but should use it as a starting point of analysis, and should independently confirm the accuracy of the information contained herein through a due diligence review of the books, records, files and documents that constitute reliable sources of the information described herein. Spectrum Commercial Real Estate, Inc., CA DRE #02042805

**SPECTRUM**  
COMMERCIAL REAL ESTATE, INC.



# FOR LEASE | HIGH-IMAGE OFFICE/CREATIVE SPACE

28516 Constellation Road | Valencia, CA

*Amenities*



**YAIR HAIMOFF, SIOR**  
 Executive, Managing Director  
 818.203.5429  
 yhaimoff@spectrumcre.com  
 DRE License #01414758

**MATT SREDEN**  
 Vice President  
 661.755.6654  
 msreden@spectrumcre.com  
 DRE License #01907628

**ANDREW GHASSEMI**  
 Senior Vice President  
 661.212.3956  
 aghassemi@spectrumcre.com  
 DRE License #01963548

[spectrumcre.com](http://spectrumcre.com)

No warranty, express or implied, is made as to the accuracy of the information contained herein. This information is submitted subject to errors, omissions, change of price, rental or other conditions, withdrawal without notice, and is subject to any special listing conditions imposed by our principals. Cooperating brokers, buyers, tenants and other parties who receive this document should not rely on it, but should use it as a starting point of analysis, and should independently confirm the accuracy of the information contained herein through a due diligence review of the books, records, files and documents that constitute reliable sources of the information described herein. Spectrum Commercial Real Estate, Inc., CA DRE #02042805

**SPECTRUM**  
 COMMERCIAL REAL ESTATE, INC.