

# Marsh Creek Village Shopping Center

6780 Roswell Road, Atlanta, GA 30328

FOR  
LEASE

1,071 to 2,171 SF

Retail  
Space



## Property Highlights

- Marsh Creek Village Shopping Center
- Building "D" (downstairs) 1,200 SF
- Building "C" (downstairs) 1,100 SF & 1,071 SF or both 2,171 SF
- Rate: \$22.00/RSF
- Both buildings built in 2010
- Great location in Sandy Springs with strong visibility and over 600 feet of frontage on Roswell Road
- Traffic Count on Roswell Road: 36,940 AADT
- Available January 1, 2017

### Daytime Population

3 mile radius: 135,023

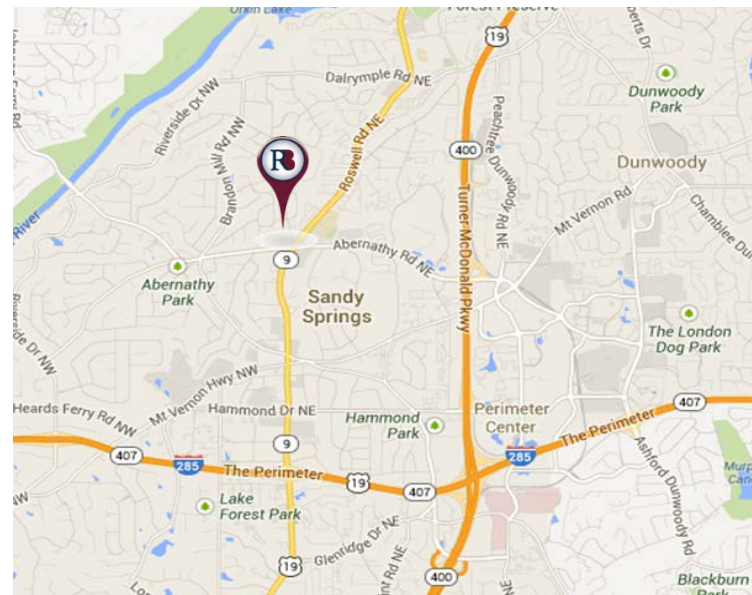
5 mile radius: 318,428

### Average Household Income

1 mile radius: \$116,616

3 mile radius: \$128,931

5 mile radius: \$108,544



## Exclusive Agents:

Jeff McMullen

Cell: 770.380.6538

[jmcmullen@richardbowers.com](mailto:jmcmullen@richardbowers.com)

Willie Ellington

Office: 404.816.1600 Ext 148

[wellington@richardbowers.com](mailto:wellington@richardbowers.com)



Richard Bowers & Co.  
Real Estate



[www.richardbowers.com](http://www.richardbowers.com)

260 Peachtree Street, Suite 2400, Atlanta, GA 30303 | Phone (404) 816-1600 | Fax (404) 880-0077

The information contained herein has been received from sources deemed reliable but no liability is assumed by Richard Bowers & Co. or its agents for errors or omissions.

# Marsh Creek Village Shopping Center

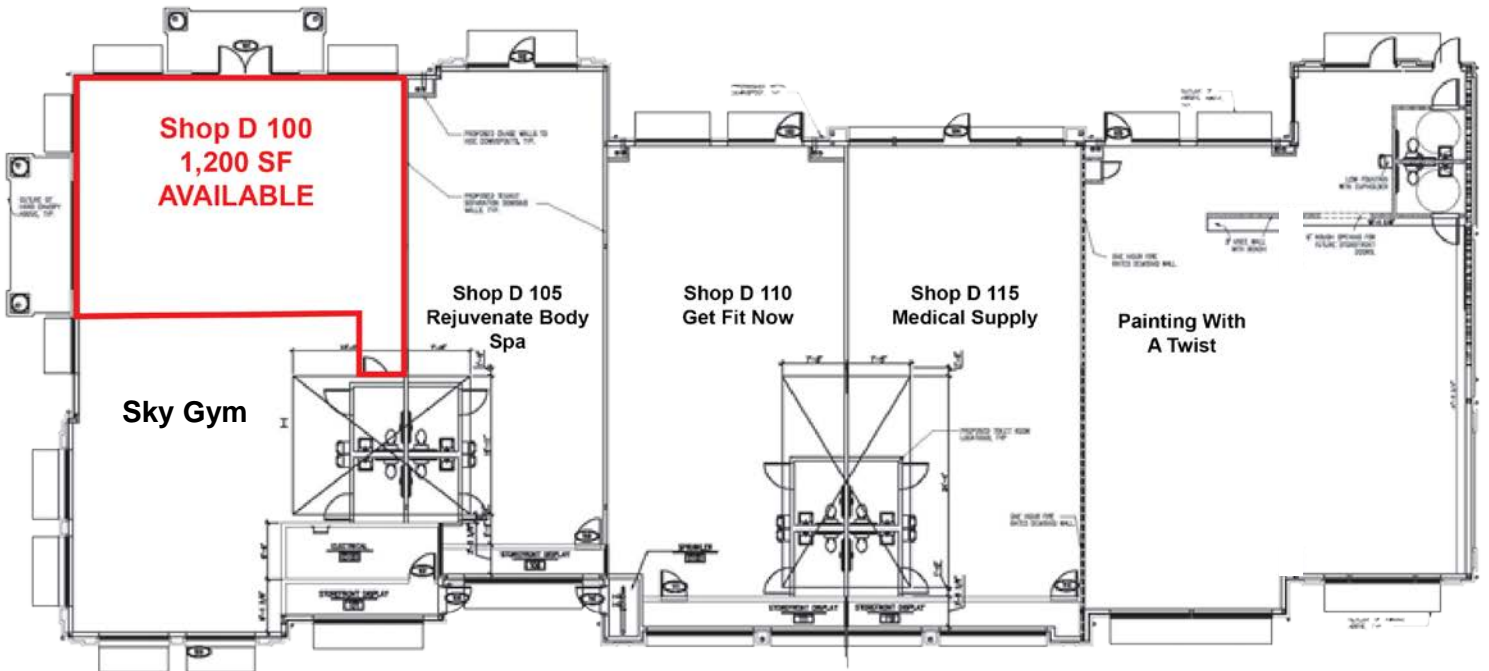
6780 Roswell Road, Atlanta, GA 30328

FOR  
LEASE

1,071 to 2,171 SF

Retail  
Space

## Marsh Creek Village Shopping Center BLDG D – 1<sup>st</sup> Floor



## BLDG C – 1<sup>st</sup> Floor



[www.richardbowers.com](http://www.richardbowers.com)

260 Peachtree Street, Suite 2400, Atlanta, GA 30303 | Phone (404) 816-1600 | Fax (404) 880-0077

The information contained herein has been received from sources deemed reliable but no liability is assumed by Richard Bowers & Co. or its agents for errors or omissions.