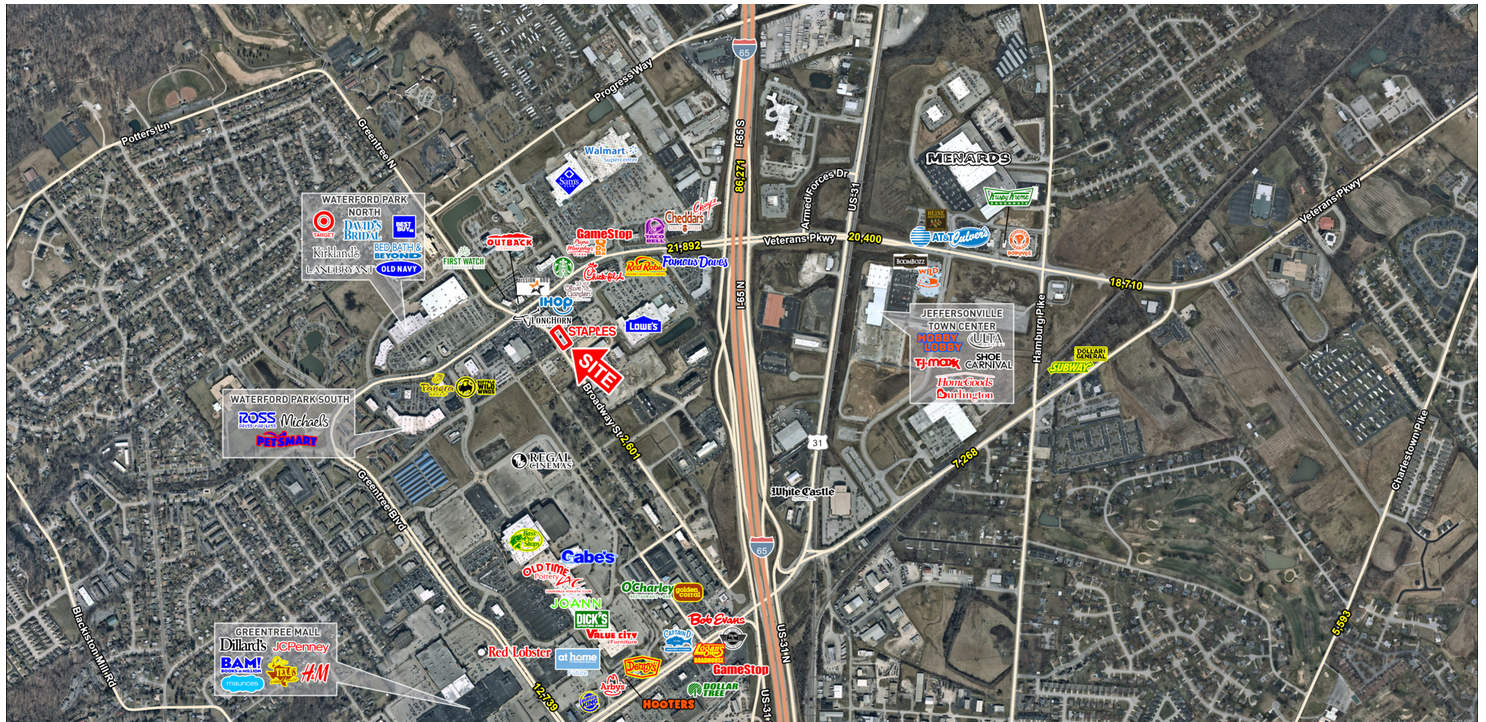


# 1240 VETERANS PARKWAY

1240 Veterans Parkway, Clarksville, IN 47129

## EXECUTIVE SUMMARY



## LOCATION OVERVIEW

Building is located just off Veterans Parkway in Clarksville's main retail corridor



## EXCLUSIVE AGENT(S)

RONDA HOGAN, CCIM • ronda.hogan@tscg.com • 502.874.5936

KEVIN MAYHUGH • kevin.mayhugh@tscg.com • 502.874.5933

## PROPERTY HIGHLIGHTS

- Endcap 1,640 SF space available
- Prominent shopping corridor in Clark County
- Area retailers: Target, Walmart Supercenter, Sam's Club, Lowe's, Best Buy, Dillards, Bass Pro Shop, JCPenney
- Traffic counts: Veterans Parkway - 22,700 adt

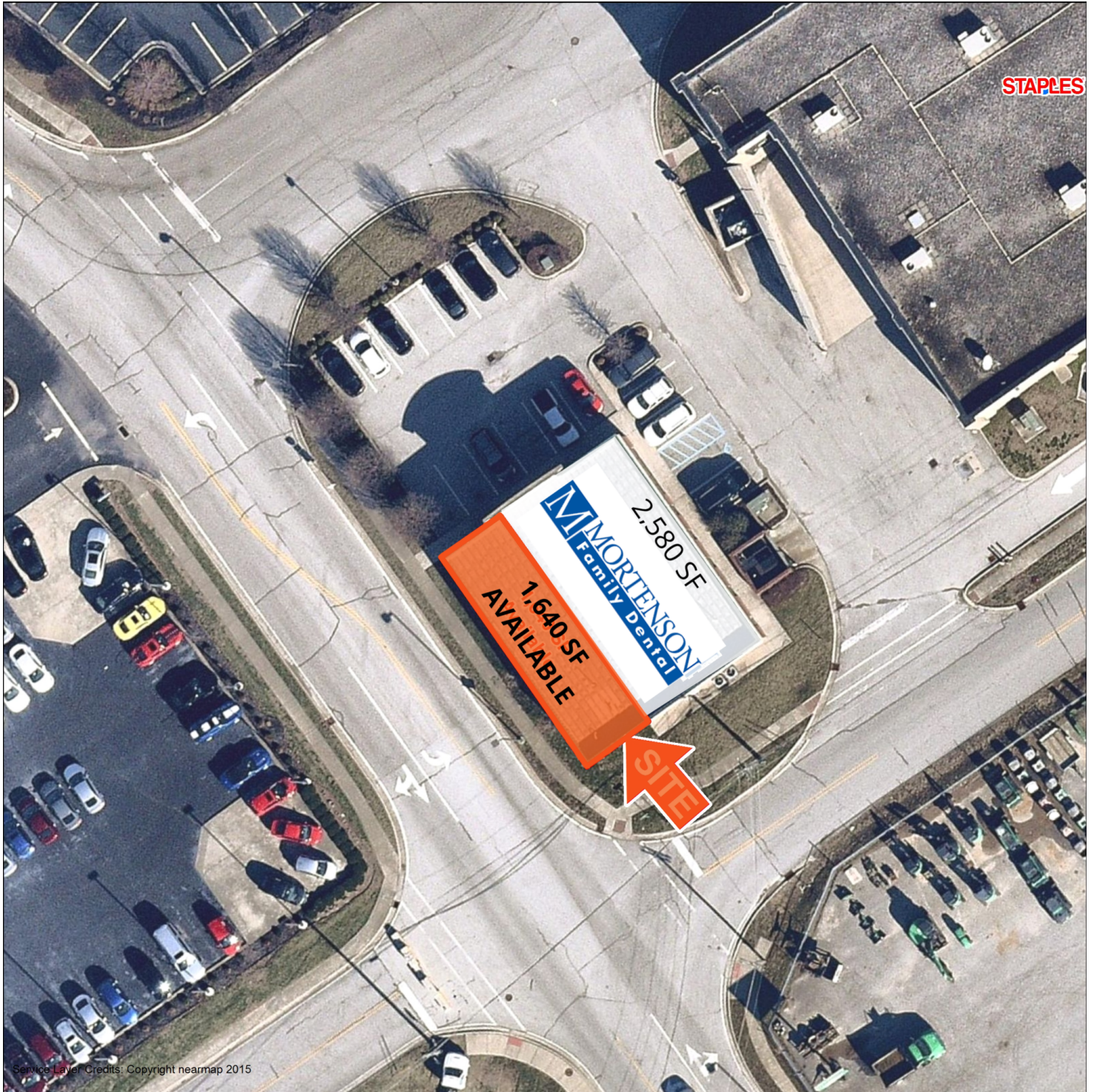
## DEMOGRAPHICS

	1 MILE	3 MILES	5 MILES
Population	8,215	57,857	139,101
Households	3,529	24,291	56,879
Avg HH Income (\$)	41,849	54,779	51,566

# 1240 VETERANS PARKWAY

1240 Veterans Parkway, Clarksville, IN 47129

## SITE PLAN



### EXCLUSIVE AGENT(S)

RONDA HOGAN, CCIM • [ronda.hogan@tscg.com](mailto:ronda.hogan@tscg.com) • 502.874.5936

KEVIN MAYHUGH • [kevin.mayhugh@tscg.com](mailto:kevin.mayhugh@tscg.com) • 502.874.5933