

# Tria Apartments Retail

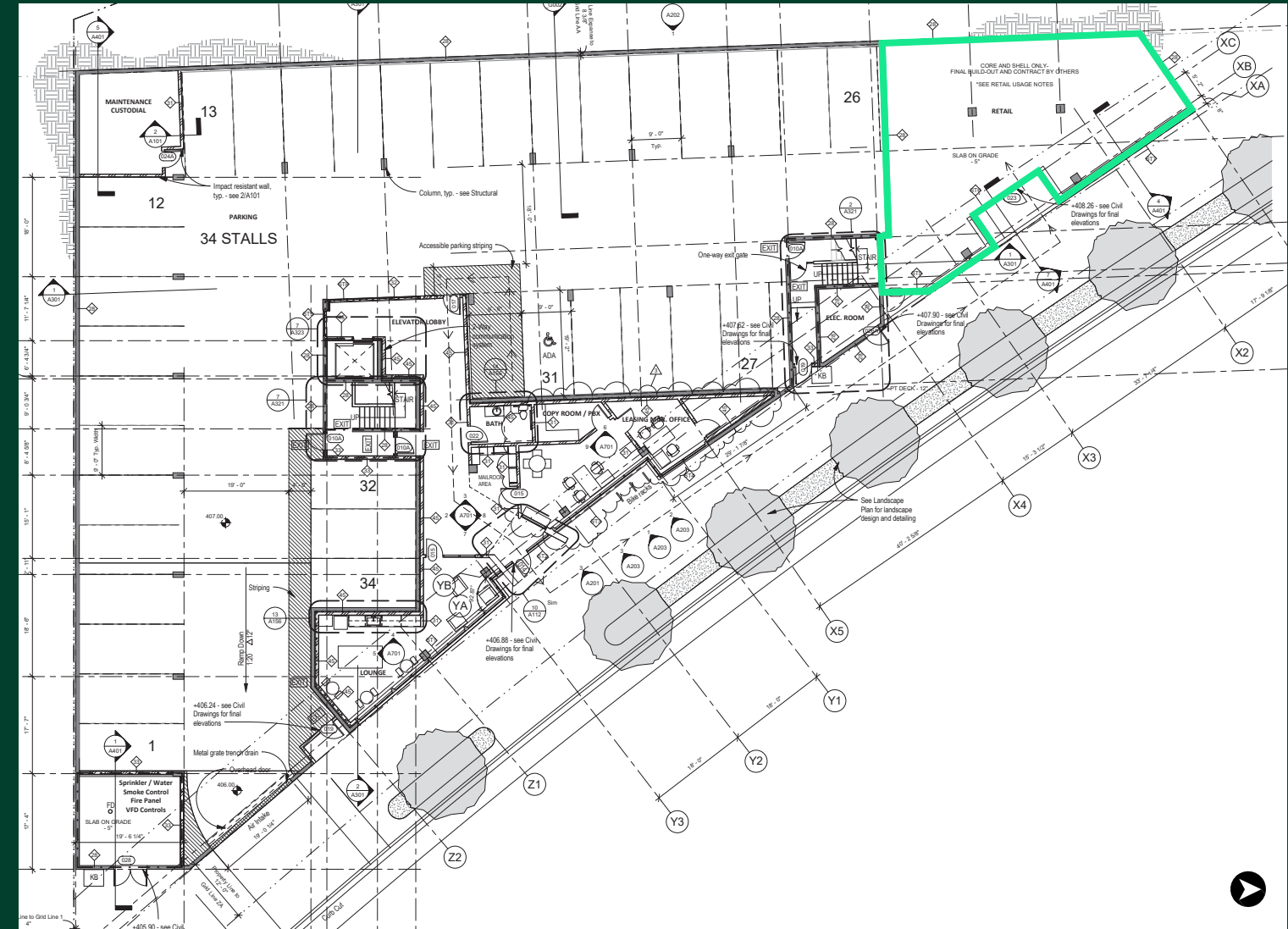
12833 Newcastle Way,  
Newcastle, WA 98056



TRIA  
Now leasing  
425.251.0855  
Liveattria.com

AVAILABLE





# Space Details

- Available: 1,576 SF
- Rent: \$24.00 PSF, NNN
- Rare ground floor retail space in mixed use 76-unit residential community
- 5 parking stalls for retail use
- Expansive window line provides amazing signage opportunity
- Looking for service-oriented providers not requiring more than 5 parking stalls at a given time
- May be able to accommodate take-out only food uses not requiring seating, or a Type 1 hood.
- Ideal for
  - + Drop Off/Pick Up Tutoring
  - + Financial Planners
  - + Med Spa's, Chiropractors, Dentists, Orthodontists, Optical, and more!

Demographics	Mile 1	Mile 3	Mile 5
2021 Population	13,781	87,792	237,005
Median Home Value	\$738,543	\$849,358	\$767,860
2021 Average Household Income	\$157,538	\$189,829	\$164,171
Median Age	42	42	41

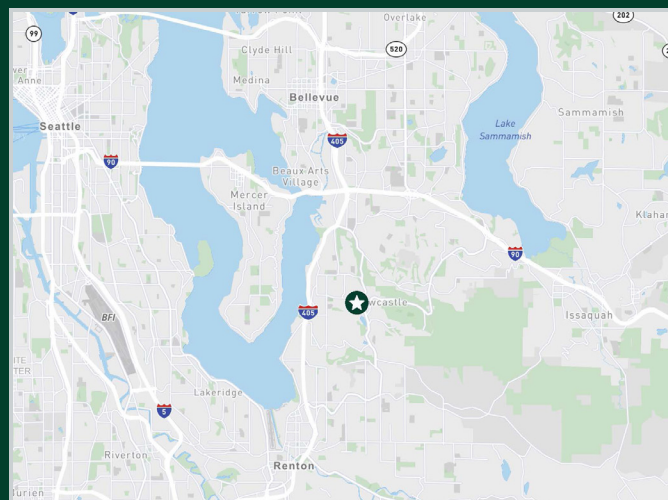
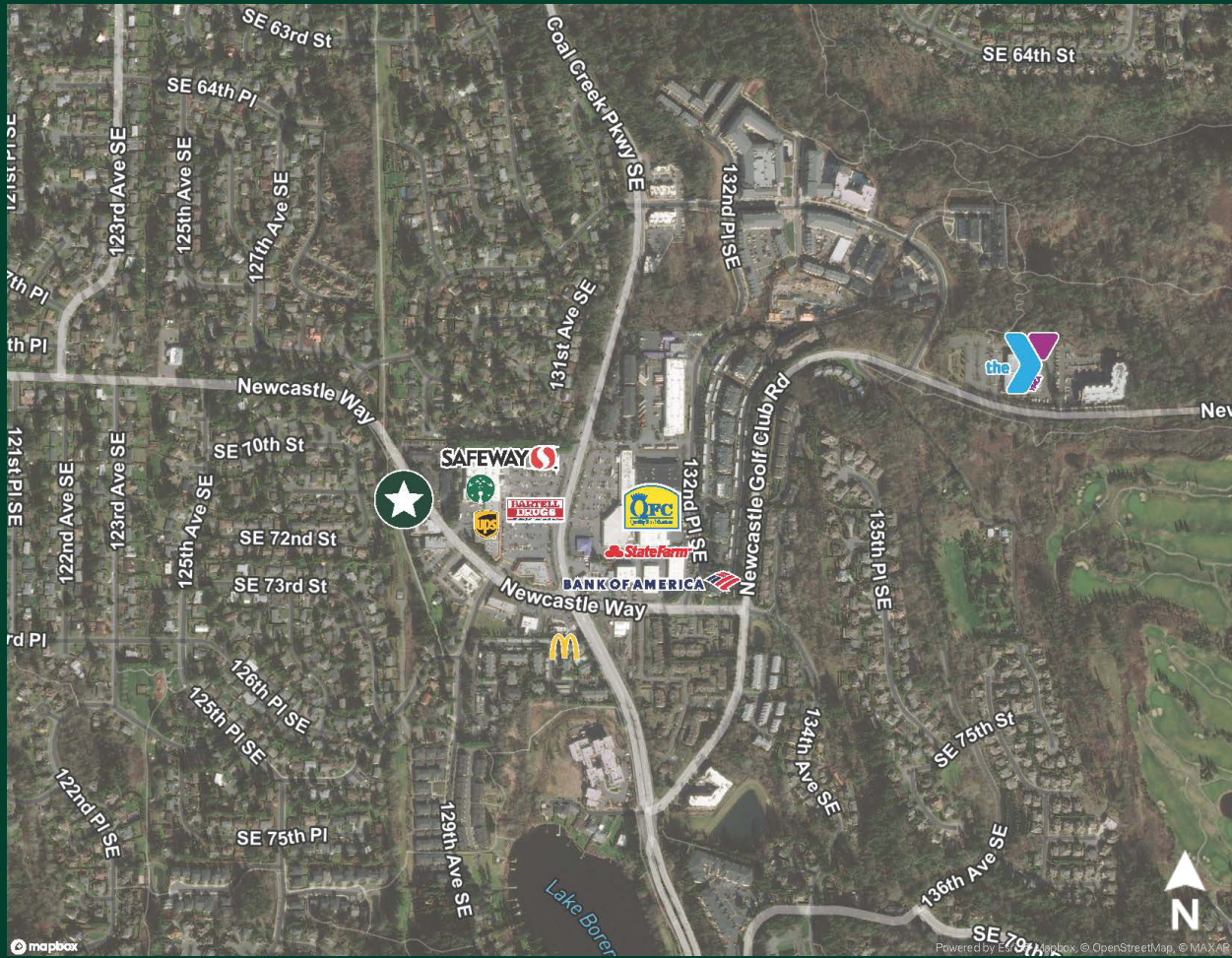
\*ESRI 2021



# Tria Apartments

12833 Newcastle Way, Newcastle, WA 98056

# For Lease



## Contact Us

**Lourdes Valdesuso**  
+1 206 618 7003  
lourdes.valdesuso@cbre.com

**CBRE, Inc.**  
1420 5th Ave Suite 1700  
Seattle, WA 98101

© 2022 CBRE, Inc. All rights reserved. This information has been obtained from sources believed reliable, but has not been verified for accuracy or completeness. You should conduct a careful, independent investigation of the property and verify all information. Any reliance on this information is solely at your own risk. CBRE and the CBRE logo are service marks of CBRE, Inc. All other marks displayed on this document are the property of their respective owners, and the use of such logos does not imply any affiliation with or endorsement of CBRE. Photos herein are the property of their respective owners. Use of these images without the express written consent of the owner is prohibited. 4.13.2022 JT

[www.cbre.com/](http://www.cbre.com/)

