



PEBB ENTERPRISES

SHOPPES AT CHAPEL HILL

581-697 HOWE AVENUE | AKRON, OH 44221
1,320 SF AVAILABLE



HIGHLIGHTS

- The Shoppes at Chapel Hill is a premier regional shopping center positioned at a dominant retail corridor in Cuyahoga Falls
- 84,758 SF power center adjacent to Target with strong visibility to Howe Avenue
- The diverse range of national tenants at the center includes Michaels, Panera Bread, Staples, Jimmy John's and Brick House, amongst others
- Surrounding centers are home to over 800,000 SF of national retailers, most notably TJ Maxx, Best Buy, PetSmart, Giant Eagle, Home Depot and BJ's

AREA DEMOGRAPHICS

- **Population 3mi/5mi:** 86,887/211,824
- **Households 3mi/5mi:** 39,194/92,534
- **Average Household Income 3mi/5mi:** \$54,882/\$56,844

TRAFFIC

- 27,830 vehicles per day (Howe Avenue)
- 101,210 vehicles per day (State Road 8)

AREA RETAILERS



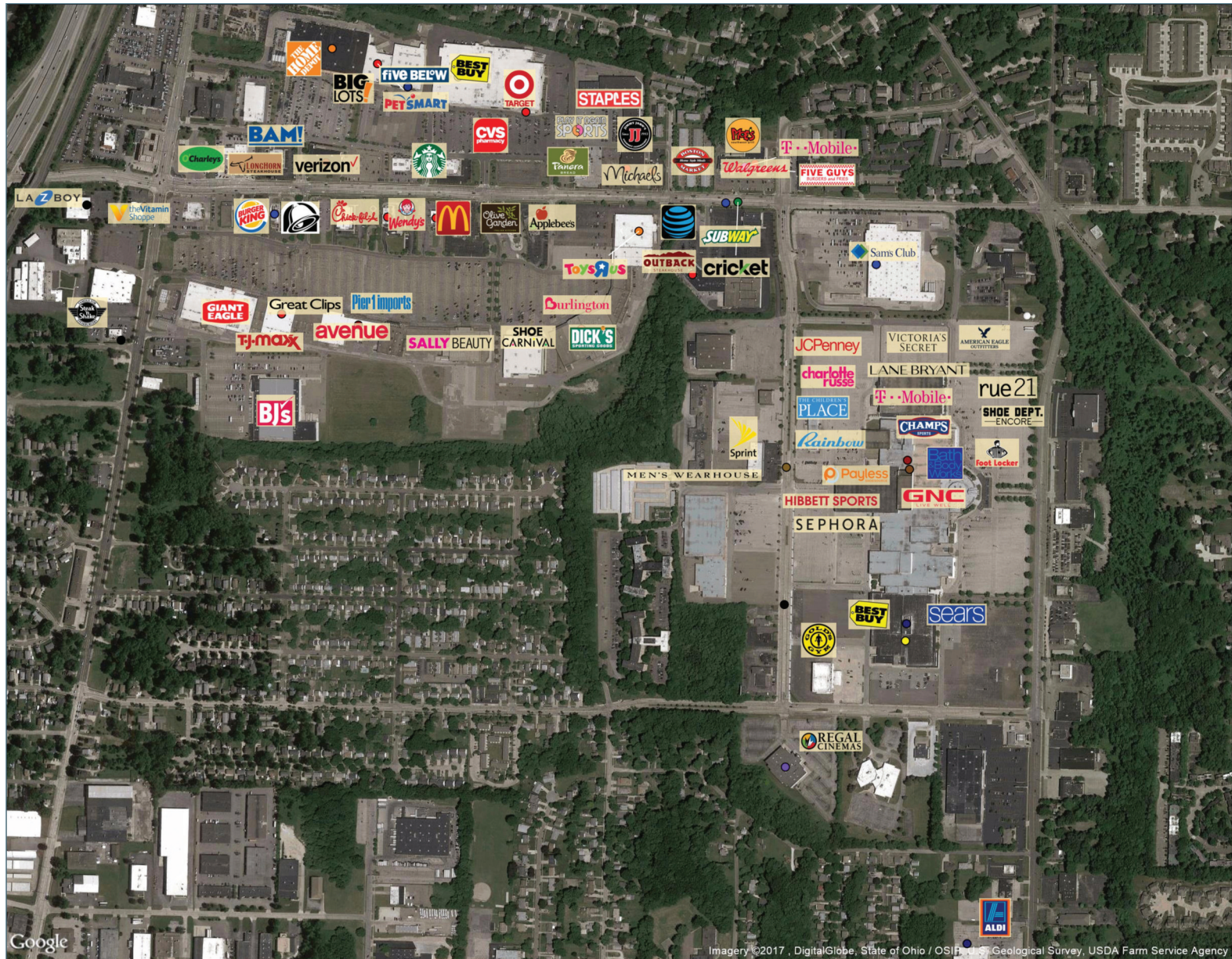
Jake Dugan | Leasing Associate
561.613.4020 | jdugan@pebbent.com | pebbent.com

Current Square Footage & Availability

689	6,480 SF	Panera Bread
677	1,380 SF	Jimmy John's
661	5,120 SF	Play It Again Sports
657	2,640 SF	The Exchange
645	29,000 SF	Staples
629	7,400 SF	Aaron's Rentals
627	1,320 SF	AVAILABLE
613	1,880 SF	Weight Watchers
597	1,975 SF	Wild Birds
593	1,225 SF	VIP Nails & Day Spa
585	3,200 SF	Original Mattress Factory
OP-697	17,589 SF	Michael's
OP-581	6,020 SF	Brick House Tavern + Tap
TOTAL	84,758 SF	



SHOPPES AT CHAPEL HILL | 581-697 HOWE AVENUE | AKRON, OH 44221



SUMMARY PROFILE

2000 - 2010 Census

2016 Estimates with 2021 Projections

Lat/Lon: 41.1196/-81.4746

Calculated using Weighted Block Centroid from Block Groups

697 Howe Ave Cuyahoga Falls, OH 44221-4911		1 mi radius	3 mi radius	5 mi radius	10 mi radius
POPULATION	2016 Estimated Population	10,488	86,887	211,824	462,554
	2021 Projected Population	10,460	86,702	212,360	463,209
	2010 Census Population	10,666	87,943	212,044	463,108
	2000 Census Population	10,898	91,791	221,422	472,463
	Projected Annual Growth 2016 to 2021	-0.1%	-	0.1%	-
	Historical Annual Growth 2000 to 2016	-0.2%	-0.3%	-0.3%	-0.1%
	2016 Median Age	38.6	38.8	38	38.7
HOUSEHOLDS	2016 Estimated Households	5,289	39,194	92,534	197,479
	2021 Projected Households	5,427	40,242	95,460	203,565
	2010 Census Households	5,209	38,399	89,687	191,319
	2000 Census Households	5,146	39,075	91,637	190,392
	Projected Annual Growth 2016 to 2021	0.5%	0.5%	0.6%	0.6%
	Historical Annual Growth 2000 to 2016	0.2%	-	0.1%	0.2%
	2016 Median Age	38.6	38.8	38	38.7
RACE AND ETHNICITY	2016 Estimated White	82.4%	80.6%	74.2%	77.3%
	2016 Estimated Black or African American	11.0%	12.9%	19.2%	16.4%
	2016 Estimated Asian or Pacific Islander	3.1%	2.7%	2.8%	3.0%
	2016 Estimated American Indian or Native Alaskan	0.3%	0.2%	0.2%	0.2%
	2016 Estimated Other Races	3.2%	3.5%	3.5%	3.1%
	2016 Estimated Hispanic	2.4%	2.7%	2.4%	2.1%
INCOME	2016 Estimated Average Household Income	\$46,299	\$54,882	\$56,844	\$64,202
	2016 Estimated Median Household Income	\$39,740	\$46,391	\$47,357	\$52,727
	2016 Estimated Per Capita Income	\$23,378	\$24,876	\$25,080	\$27,614
EDUCATION (AGE 25+)	2016 Estimated Elementary (Grade Level 0 to 8)	5.0%	3.6%	2.9%	2.4%
	2016 Estimated Some High School (Grade Level 9 to 11)	6.6%	7.4%	7.7%	7.2%
	2016 Estimated High School Graduate	37.8%	33.7%	31.1%	32.2%
	2016 Estimated Some College	20.5%	20.1%	21.4%	20.5%
	2016 Estimated Associates Degree Only	10.8%	9.5%	8.9%	8.4%
	2016 Estimated Bachelors Degree Only	13.3%	17.8%	18.4%	18.6%
	2016 Estimated Graduate Degree	6.0%	8.0%	9.5%	10.6%
BUSINESS	2016 Estimated Total Businesses	637	3,844	9,335	20,099
	2016 Estimated Total Employees	8,677	48,462	155,507	287,573
	2016 Estimated Employee Population per Business	13.6	12.6	16.7	14.3
	2016 Estimated Residential Population per Business	16.5	22.6	22.7	23.0