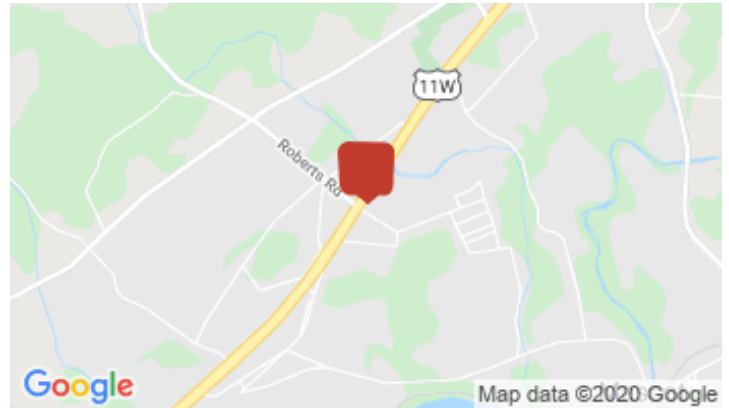
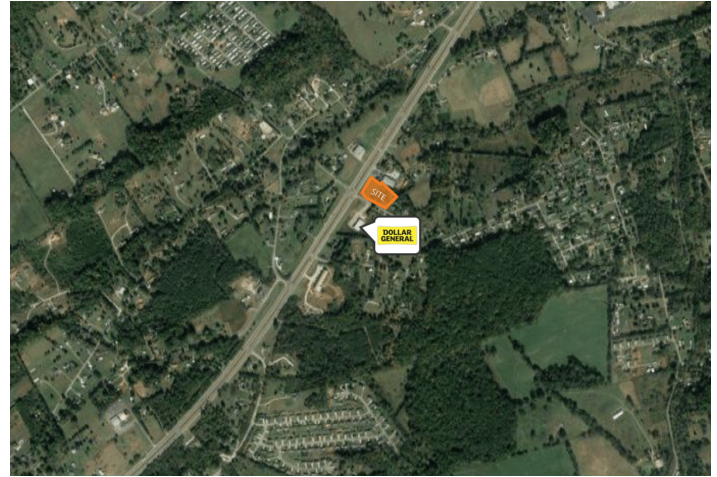


High Visibility Corner Lot

2720 Shipetown Rd, Mascot, TN 37806



Listing ID:	30499872
Status:	Active
Property Type:	Vacant Land For Sale
Possible Uses:	Retail, Self Storage
Gross Land Area:	2.31 Acres
Sale Price:	\$175,000
Unit Price:	\$75,757 Per Acre
Sale Terms:	Cash to Seller
Nearest MSA:	Knoxville
County:	Knox
Tax ID/APN:	042 056
Zoning:	CN
Property Visibility:	Excellent



Overview/Comments

This commercially zoned corner lot sits at the intersection of two high traffic volume roads in East Knox County, TN. Rutledge Pike and Shipetown Road provide this property with continuous traffic flow and high visibility. The property is only 15 minutes from downtown Knoxville. Water, sewer, and electricity are on site. This property is beside Dollar General Store and other local businesses.

- Continuous Traffic Flow
- High Visibility
- Utilities on Site
- Flexible Zoning