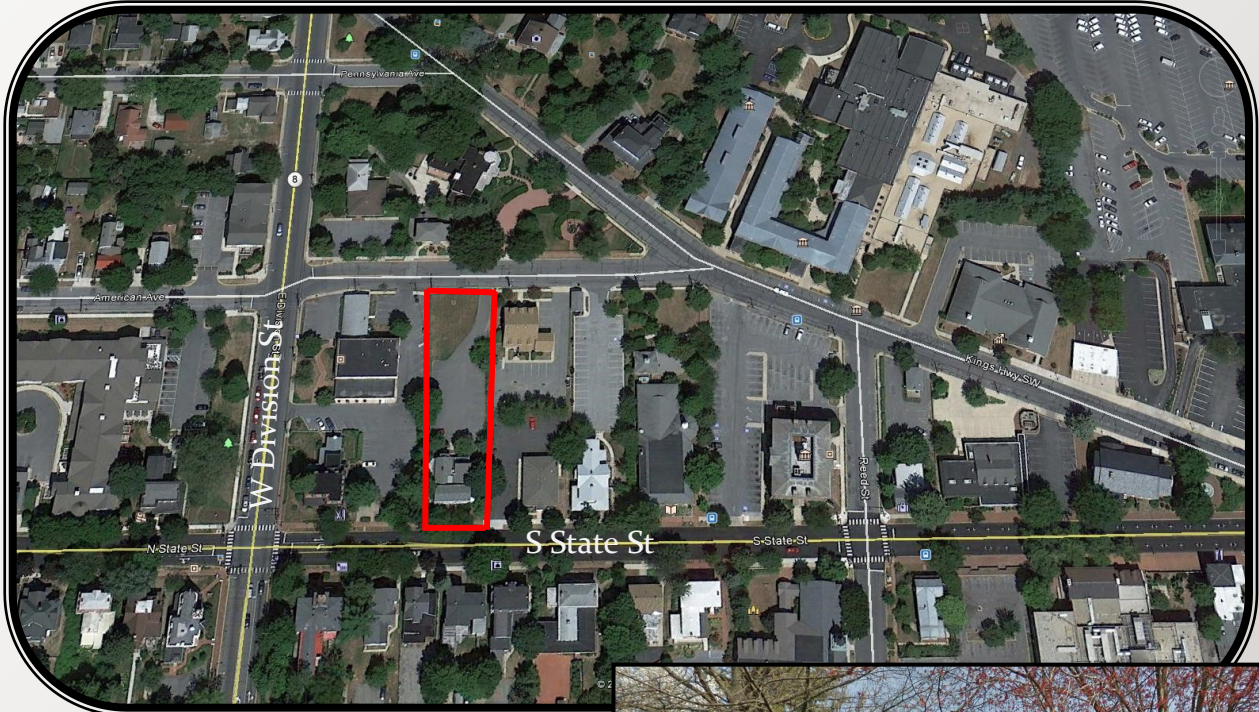




# PROPERTY FOR SALE

19 S State Street

Dover, DE



- Building size: 4,572+/- SF
- Sale Price: \$850,000
- Zoning: RGO
- Tax Parcel Number: 2-05-07705-04-3000-00001
- Kent County Taxes 2015 - \$1,928.56
- City of Dover Taxes 2015 - \$2,510.66
- Utilities: City of Dover
- Demographics:
 

	1 Mile	3 Miles	5 Miles
Population 2015	7,937	44,693	77,353
Medium Income 2015	41,082	47,618	51,385

**Carl Kaplan**  
 302-674-3400  
 cbkaplan@verizon.net

46 S State Street  
 Dover, DE 19901

302-674-3400 Office  
 302-674-8479 Fax  
[www.randrcommercialrealty.com](http://www.randrcommercialrealty.com)

All information contained herein is believed to be accurate, however was obtained from third parties and R & R Commercial Realty, Inc. does not warrant as to the accuracy submitted subject to changes or modification without notice. Listing Broker represents the seller's interest.