



**For Lease**

**Location**

2560 Long Prairie Rd.,  
Suite 200  
Flower Mound TX

**Net Lease Space**

2496 rentable square feet of 2nd floor space is available in the River Walk Marquis medical office building.

**Price**

\$35.00/SF Modified Gross

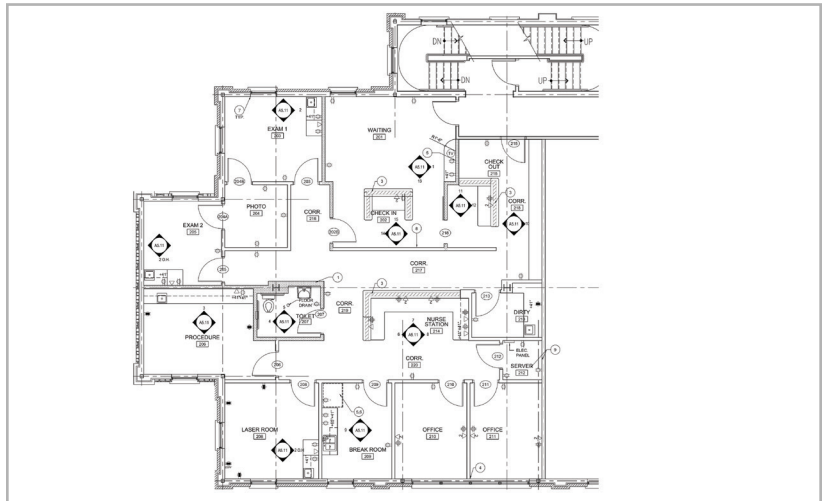
**Features**

- The suite is allowed signage on the Central Park Ave. side (front) of the building and on the Medical Arts Drive side if desired.
- This is a prime space available in this premier medical office building.
- Other tenants include pediatrics, cardiology, endodontics, women's imaging, ophthalmologist, gynecology and dermatology.

**Contact**

Todd Weaver  
3505 Yucca Drive, Suite 100  
Flower Mound, Texas 75028

todd@weavercommercial.com  
469-635-2833 Office  
469-635-2849 Fax



This information is believed to be accurate, but no representation or warranty, express or implied, as to its accuracy or completeness is made by Weaver Commercial Real Estate, Ltd. and/or its agents or any party. The presentation of this property is submitted subject to errors, omissions, change of price and prior sale or lease, or withdrawal from market without notice.