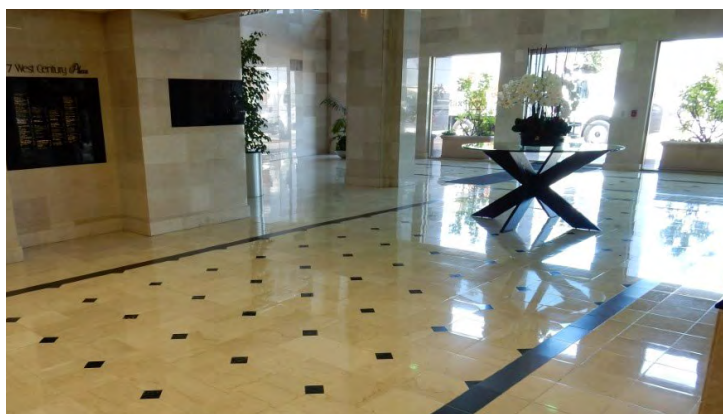
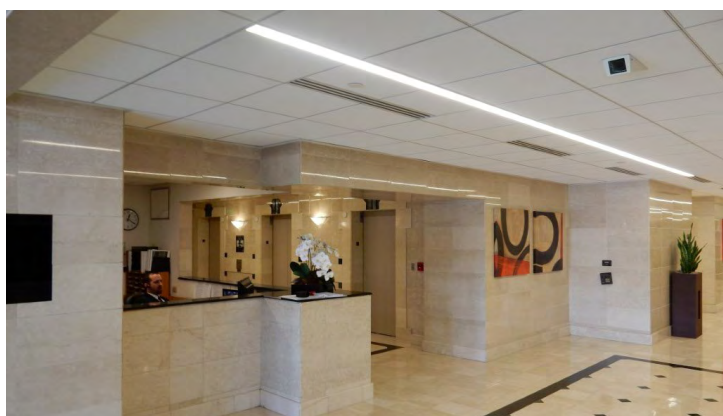
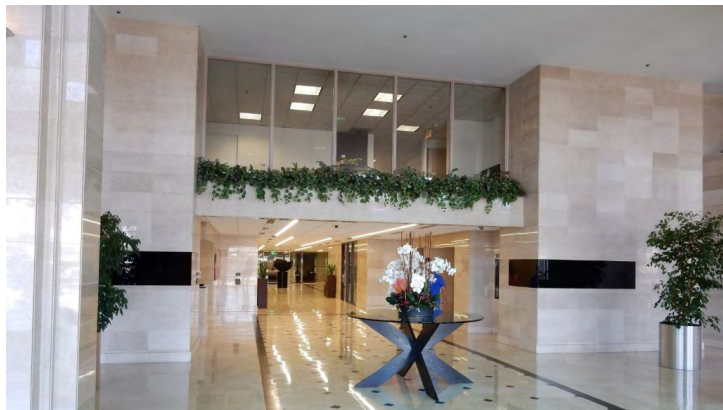


FOR LEASE

5777 W Century Boulevard | Los Angeles, CA



5777
WEST CENTURY PLAZA



Available Suites Ranging 405 RSF - 53,595 SF

- 16-Story, class "A" office tower
- Up to 53,000 SF of contiguous space on 4th floor
- Elegant, all marble / granite lobby
- Excellent airport, ocean, & LA basin views
- 24-hour access
- Modern surveillance system
- Around-the-clock security guard service
- Enterprise class bandwidth internet
- On-site internet service provider, IT support, owner management, conference facilities, and café
- Executive-type exercise room for tenants in the complex
- Adjacent to LAX Hilton & Marriott hotels
- Complimentary valet
- Building top signage available
- Parking ratio: 3/1000

Asking Rate:

\$1.65 - \$2.20 / PSF FSG



**16 STORY
CLASS A
OFFICE BLDG**



**AROUND-THE-
CLOCK SECURITY
GUARD SERVICE**



**CLOSE
PROXIMITY TO
LAX AIRPORT**

Availabilities as of July 16, 2019

FLOOR/SUITE	SQ. FT.	RATE	DESCRIPTION
100	840	\$2.20 NNN	Retail/office space
103	1,490	\$2.20 NNN	Retail/office space
105	1,176	\$2.20 NNN	Retail/office space
103/105	2,666	\$2.20 NNN	Retail/office space
239	1,225	\$1.65 FSG	
370	3,283	\$1.65 FSG	8 offices, training room, kitchen, open area
390	2,109	\$1.65 FSG	3 offices, open area
4th Floor	25,000-53,595	TBD	
500	5,146	\$1.75 FSG	Multiple offices, kitchen, open area
535	935	\$1.75 FSG	2 offices, kitchen, storage
600	6,826	\$1.75 FSG	Multiple offices, conference room, kitchen, IT / server room, open area, reception
655	1,080	\$1.75 FSG	2 window offices, interior office, reception
665	883	\$1.75 FSG	3 offices
670	1,019	\$1.75 FSG	2 offices, conference, reception
700	7,896	\$2.00 FSG	Multiple offices, kitchen, open area
700/715/725	10,614	\$2.00 FSG	Multiple offices, kitchen, open area
760	3,673	\$2.00 FSG	Multiple offices, kitchen, open area
785	5,227	\$2.00 FSG	8 offices, storage room, kitchen, open area
790	1,424	\$2.00 FSG	2 offices, conference room, open area

Copyright © Lee & Associates. All rights reserved. No part of this work may be reproduced or distributed without written permission of the copyright owner. The information contained in this report was gathered by Lee & Associates from sources believed to be reliable. Lee & Associates, however, makes no representation concerning the accuracy or completeness of such information and expressly disclaims any responsibility for any inaccuracy contained herein.

Availabilities as of July 16, 2019

FLOOR/SUITE	SQ. FT.	RATE	DESCRIPTION
760/790	5,097	\$2.00 FSG	Multiple offices, kitchen, open area
760/785/790	10,324	\$2.00 FSG	Multiple offices, 2 kitchens, open area
805	3,224	\$2.00 FSG	2 offices, kitchen, IT/server room, open area
875	1,691	\$2.00 FSG	
876	1,688	\$2.00 FSG	1 window office, IT/server room, open area, reception
890	1,616	\$2.00 FSG	
900	3,610	\$2.00 FSG	3 window offices, conference room, kitchen, IT/storage room, open area, reception
930	1,055	\$2.00 FSG	3 window offices, IT/server room, open area
995	2,256	\$2.00 FSG	1 window office, 1 interior office, open area
1000	8,168	\$2.10 FSG	6 window offices, 2 kitchens, open area
1005	1,601	\$2.10 FSG	
1010	2,292	\$2.10 FSG	
1015	1,100	\$2.10 FSG	
1033	695	\$2.10 FSG	Open area
1035	928	\$2.10 FSG	3 offices, open area
1033 / 1035	1,623	\$2.10 FSG	3 offices, open area
1040	2,140	\$2.10 FSG	Spec Suite - 2 offices, kitchen, open area
1045	2,551	\$2.10 FSG	3 window offices, conference room, kitchen, open area, reception

Copyright © Lee & Associates. All rights reserved. No part of this work may be reproduced or distributed without written permission of the copyright owner. The information contained in this report was gathered by Lee & Associates from sources believed to be reliable. Lee & Associates, however, makes no representation concerning the accuracy or completeness of such information and expressly disclaims any responsibility for any inaccuracy contained herein.

Availabilities as of July 16, 2019

FLOOR/SUITE	SQ. FT.	RATE	DESCRIPTION
1080	1,701	\$2.10 FSG	1 window office, 3 interior offices, open area
1088	745	\$2.10 FSG	1 window office, 1 interior office, open area
1080/1088	2,511	\$2.10 FSG	2 window offices, 4 interior offices, open area
1090	2,389	\$2.10 FSG	3 window offices, 3 interior offices, kitchen, open area
1095	3,287	\$2.10 FSG	4 window offices, 3 interior offices, open area
1090 / 1095	5,676	\$2.10 FSG	7 window offices, 6 interior offices, kitchen, open area
1045/1070/1075/1080/ 1088/1090/1095	11,605	\$2.10 FSG	Multiple offices, kitchen, open area
1156	405	\$2.10 FSG	1 window office, reception
1160	1,682	\$2.10 FSG	
1180	1,385	\$2.10 FSG	
1210	1,572	\$2.10 FSG	Open area
1235	818	\$2.10 FSG	1 window office, IT / server room, open area
1240	986	\$2.10 FSG	2 offices, kitchen, open area
1250	1,166	\$2.10 FSG	3 offices, conference room, open area
1405	2,086	\$2.10 FSG	3 window offices, 1 interior office, storage room, kitchen, open area
1415	2,003	\$2.10 FSG	5 offices, IT / server room, open area
1445	1,214	\$2.10 FSG	
1455	1,092	\$2.10 FSG	1 office, server room, open area

Copyright © Lee & Associates. All rights reserved. No part of this work may be reproduced or distributed without written permission of the copyright owner. The information contained in this report was gathered by Lee & Associates from sources believed to be reliable. Lee & Associates, however, makes no representation concerning the accuracy or completeness of such information and expressly disclaims any responsibility for any inaccuracy contained herein.

Availabilities as of July 16, 2019

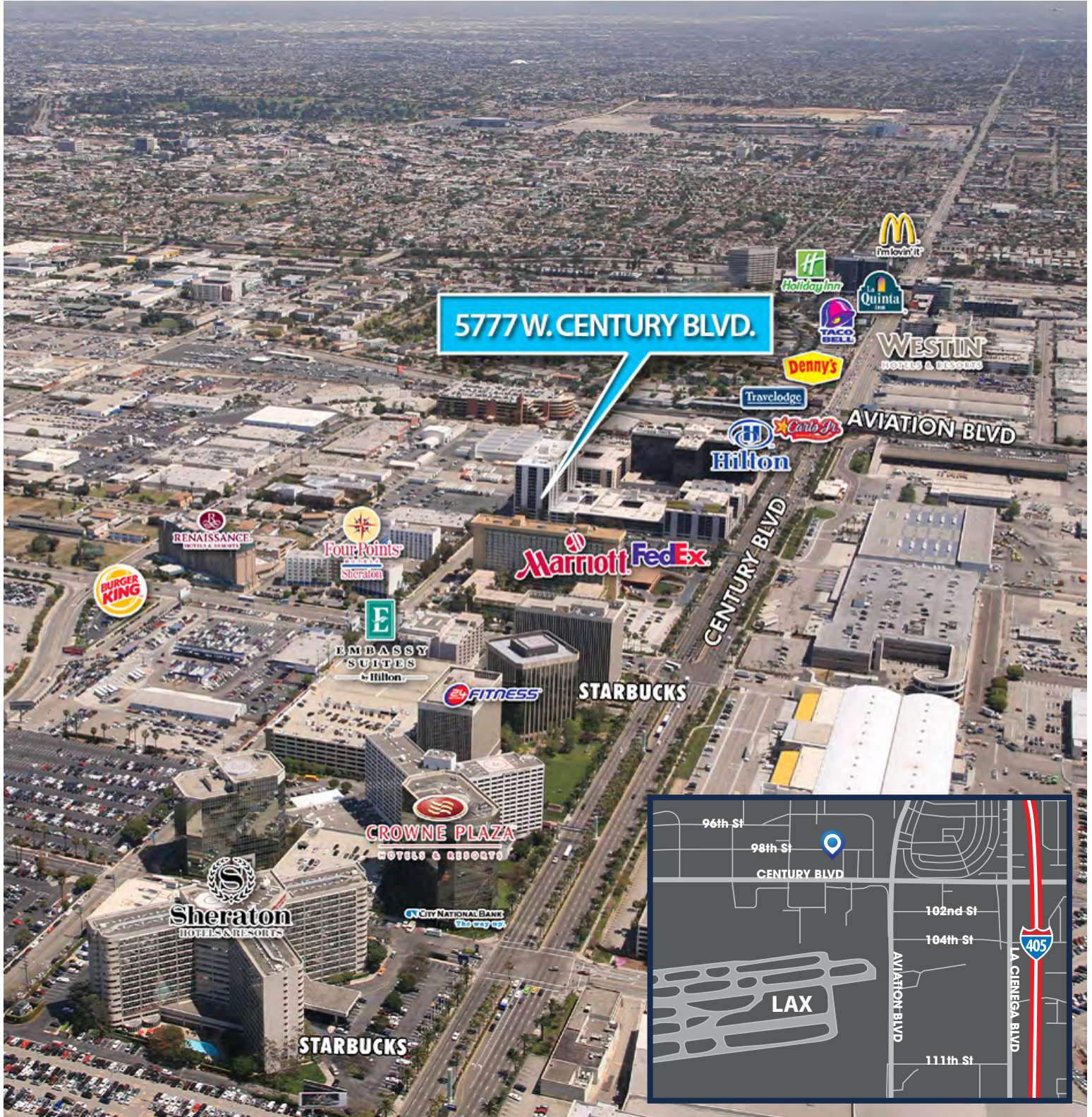
FLOOR/SUITE	SQ. FT.	RATE	DESCRIPTION
1470	1,668	\$2.10 FSG	2 window offices, 1 interior office, open area
1520	1,695	\$2.20 FSG	Spec Suite - open area
1595	1,743	\$2.20 FSG	1 office, conference room, kitchen, open area, reception
1606	1,417	\$2.20 FSG	3 interior offices, open area
1620	1,002	\$2.20 FSG	1 window office, 2 interior offices, open area
1635	445	\$2.20 FSG	Open area
1665	1,698	\$2.20 FSG	Corporate suite with shared access to conference room and kitchen/lounge area - 3 window offices, kitchen, storage closet, open area
1680	1,405	\$2.20 FSG	
1685	1,485	\$2.20 FSG	Corporate suite with shared access to conference room and kitchen/lounge area - 3 offices, conference room, open area

*Rental rates are subject to change without prior notice

Copyright © Lee & Associates. All rights reserved. No part of this work may be reproduced or distributed without written permission of the copyright owner. The information contained in this report was gathered by Lee & Associates from sources believed to be reliable. Lee & Associates, however, makes no representation concerning the accuracy or completeness of such information and expressly disclaims any responsibility for any inaccuracy contained herein.

5777

WEST CENTURY PLAZA



LEE & ASSOCIATES
COMMERCIAL REAL ESTATE SERVICES

TOM TORABI
Principal | Lic ID# 00936845
PH: 310.965.1754
E: ttorabi@leelalb.com

TIM SULLIVAN
Senior Associate | Lic ID# 01368296
PH: 310.965.1745
E: tsullivan@leelalb.com

BRANDON NEIBEL
Associate | Lic ID# 02078405
PH: 310.965.1751
E: bneibel@leelalb.com

5777

WEST CENTURY PLAZA

5777 W Century Boulevard | Los Angeles, CA



YOUR LOCAL MARKET EXPERTS

TOM TORABI

Principal | Lic ID# 00936845

PH: 310.965.1754

E: ttorabi@leelalb.com

TIM SULLIVAN

Senior Associate | Lic ID# 01368296

PH: 310.965.1745

E: tsullivan@leelalb.com

BRANDON NEIBEL

Associate | Lic ID# 02078405

PH: 310.965.1751

E: bneibel@leelalb.com

1411 W. 190TH STREET, SUITE 450, GARDENA CA 90248 ☎ 310-768-8800 | WWW.LEE-ASSOCIATES.COM

Copyright © Lee & Associates. All rights reserved. No part of this work may be reproduced or distributed without written permission of the copyright owner. The information contained in this report was gathered by Lee & Associates from sources believed to be reliable. Lee & Associates, however, makes no representation concerning the accuracy or completeness of such information and expressly disclaims any responsibility for any inaccuracy contained herein.