



±2.3 Acres Available
Sale Price: \$14.00 PSF

Property Highlights

- NE Douglas frontage
- Directly south of St. Luke's East Hospital
- Visible to 22,000 vehicles per day
- All utilities to site
- Zoned CP-2 (Planned Community Commercial)
- Ideal for medical office/day care/hotel

Craig Kelly, SIOR

Director

+1 816 412 0279

craig.kelly@cushwake.com

Suzanne Dimmel, CCIM

Director

+1 816 412 0271

suzanne.dimmel@cushwake.com

Leonard Popplewell

Associate

+1 816 412 0236

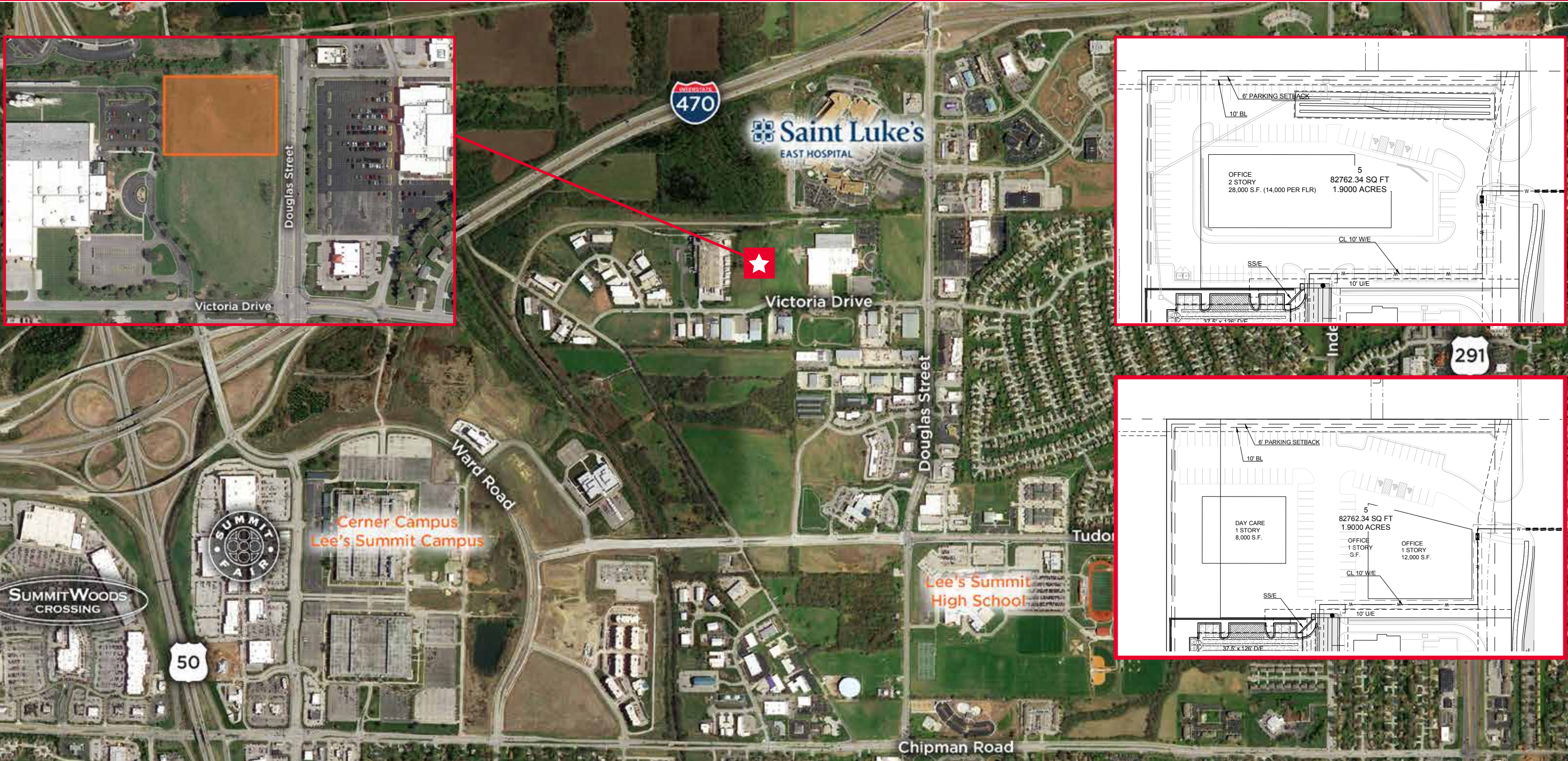
Leonard.Popplewell@cushwake.com

Andrew Greene

Associate

+1 816 216 5654

andrew.greene@cushwake.com



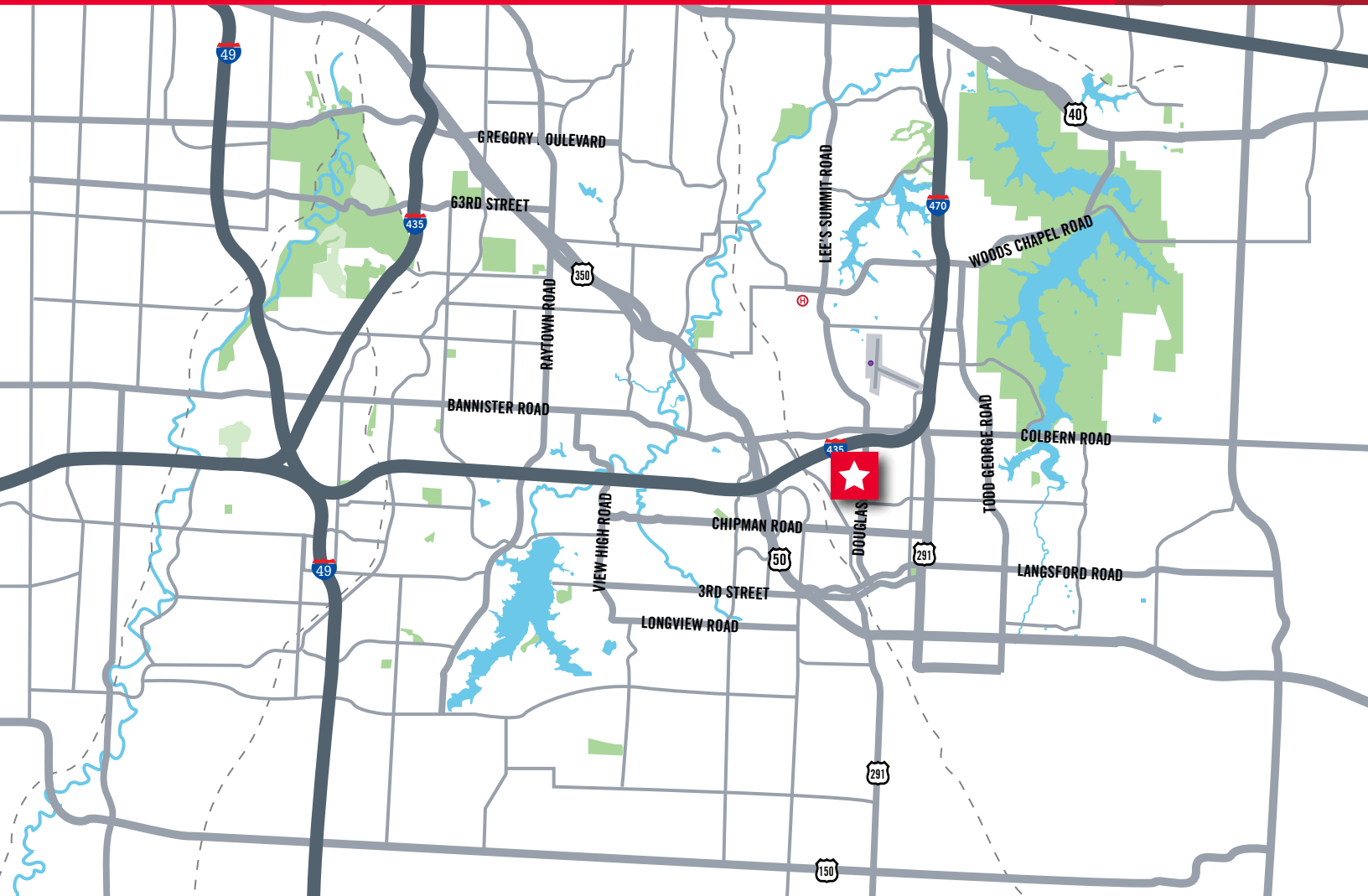
Craig Kelly, SIOR
 Director
 +1 816 412 0279
 craig.kelly@cushwake.com

Suzanne Dimmel, CCIM
 Director
 +1 816 412 0271
 suzanne.dimmel@cushwake.com

Leonard Popplewell
 Associate
 +1 816 412 0236
 Leonard.Popplewell@cushwake.com

Andrew Greene
 Associate
 +1 816 216 5654
 andrew.greene@cushwake.com

4600 Madison Avenue, Suite 800
 Kansas City, MO 64112
 Main +1 816 221 2200
 Fax +1 816 842 2798
cushmanwakefield.com



Demographics

	1 Mile	3 Miles	5 Miles
Population	4,397	49,949	91,476
AVG. HH Income	\$82,219	\$84,855	\$102,981

Craig Kelly, SIOR

Director

+1 816 412 0279

craig.kelly@cushwake.com
Suzanne Dimmel, CCIM

Director

+1 816 412 0271

suzanne.dimmel@cushwake.com
Leonard Popplewell

Associate

+1 816 412 0236

Leonard.Popplewell@cushwake.com
Andrew Greene

Associate

+1 816 216 5654

andrew.greene@cushwake.com