

THIRTY FOUR GANSEVOORT STREET

MEATPACKING
DISTRICT
TOWNHOUSE
OPPORTUNITY



SIZE

Ground: 2,050 SF

Second: 2,800 SF

Third: 1,500 SF

Fourth: 1,500 SF

Fifth: 1,500 SF

Basement: 1,500 SF

Total: 10,850 SF

NEIGHBORING TENANTS

Hermes | Theory | Madewell | Restoration Hardware
Frame | Catch | Vince | Tesla | Rolex | Apple | Pastis

POSSESSION

Arranged

COMMENTS

Next to Gansevoort Row, welcoming new tenants Hermés, Pastis, Brunello Cucinelli, Belstaff and Frame.

Potential for full building opportunity or floors can be leased separately.

Between Hudson and Greenwich Streets.

Across from the Gansevoort Plaza, over 7,500 square feet of public space and seating.



FLOOR PLANS

BASEMENT

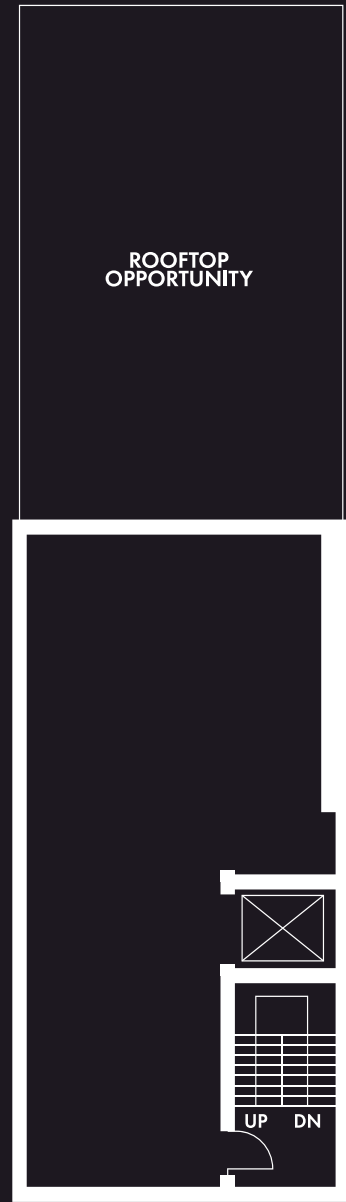
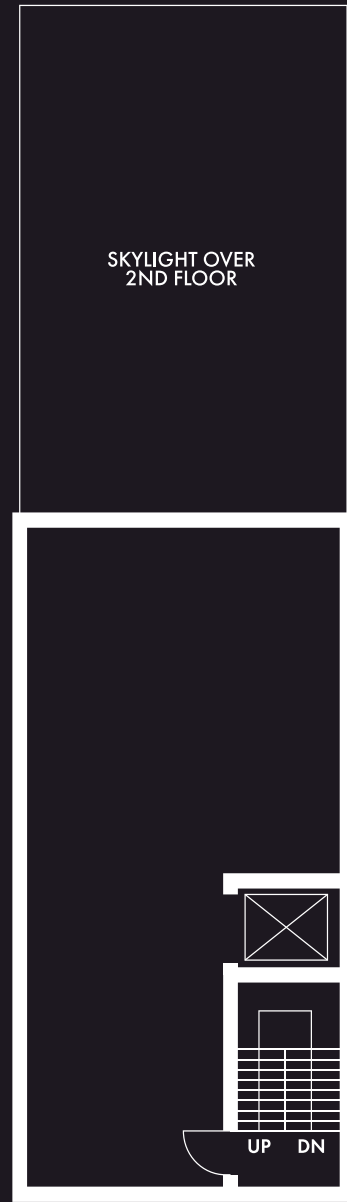
GROUND

SECOND

THIRD

FOURTH

FIFTH



1,500 SF

2,050 SF

2,800 SF

1,500 SF

1,500 SF

1,500 SF

**THIRTY
FOUR
GANSEVOORT
STREET**

MEATPACKING
DISTRICT
TOWNHOUSE
OPPORTUNITY

JOE MASTROMONACO

212.687.2400

JMASTROMONACO@DARTCO.COM

FRITZ KEMERLING

212.687.2422

FRITZ@DARTCO.COM

EVAN CLEMENTS

212.687.2431

ECLEMENTS@DARTCO.COM



270 LAFAYETTE STREET | SUITE 806

NEW YORK, NEW YORK 10012

212.687.2400

DARTCO.COM