



South Pointe Commerce Park

SR 19 / 880 Duncan Dr, Tavares, Lake Co, FL 32778
Commercial / Professional



Brand New Office Space For Lease Commercial / Professional

- 4+/- Acres site, 3 Buildings & Plenty of Parking
- 380+/- FT of SR 19 Frontage with Excellent Visibility
- Zoned PD - Planned Development, City of Tavares
- City Utilities
- 3% Co-Broke
- Alt Key # 3881425

**Lease an Office Suite Starting at
708 SF up to 1,625 SF !**

**Lease Rate \$12 psf Gross + Sales Tax
& \$45 per month per unit for Dumpster
Flexible Terms / Beautiful Property /
Well Maintained Building & Landscaping**



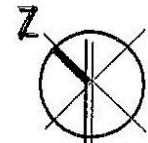
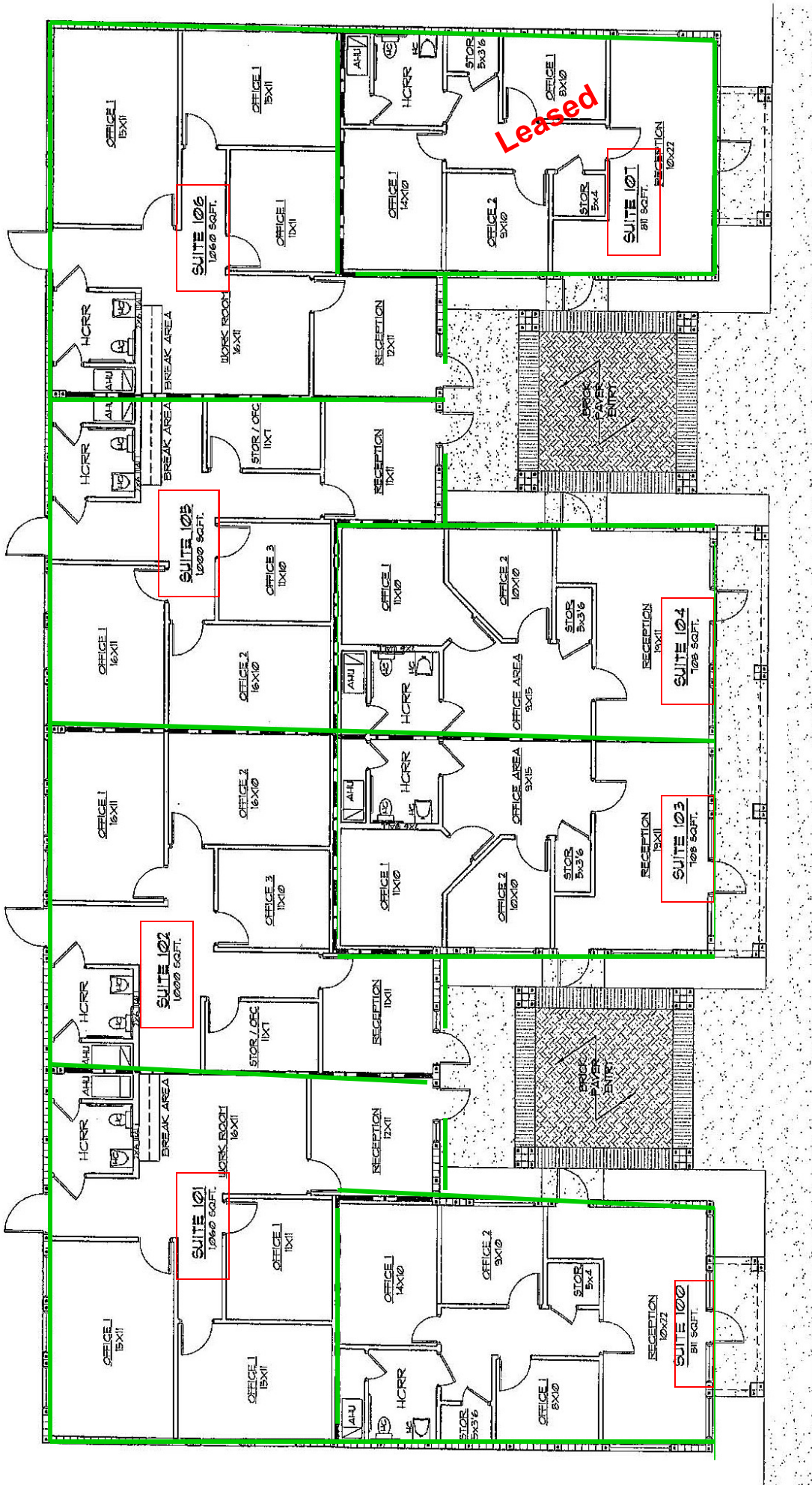
GRIZZARD

COMMERCIAL REAL ESTATE GROUP

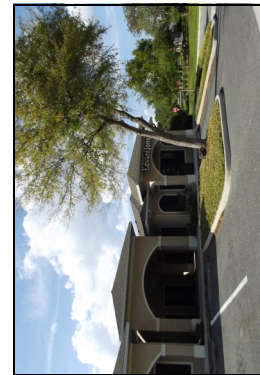
Daniel Tatro 352-408-2282

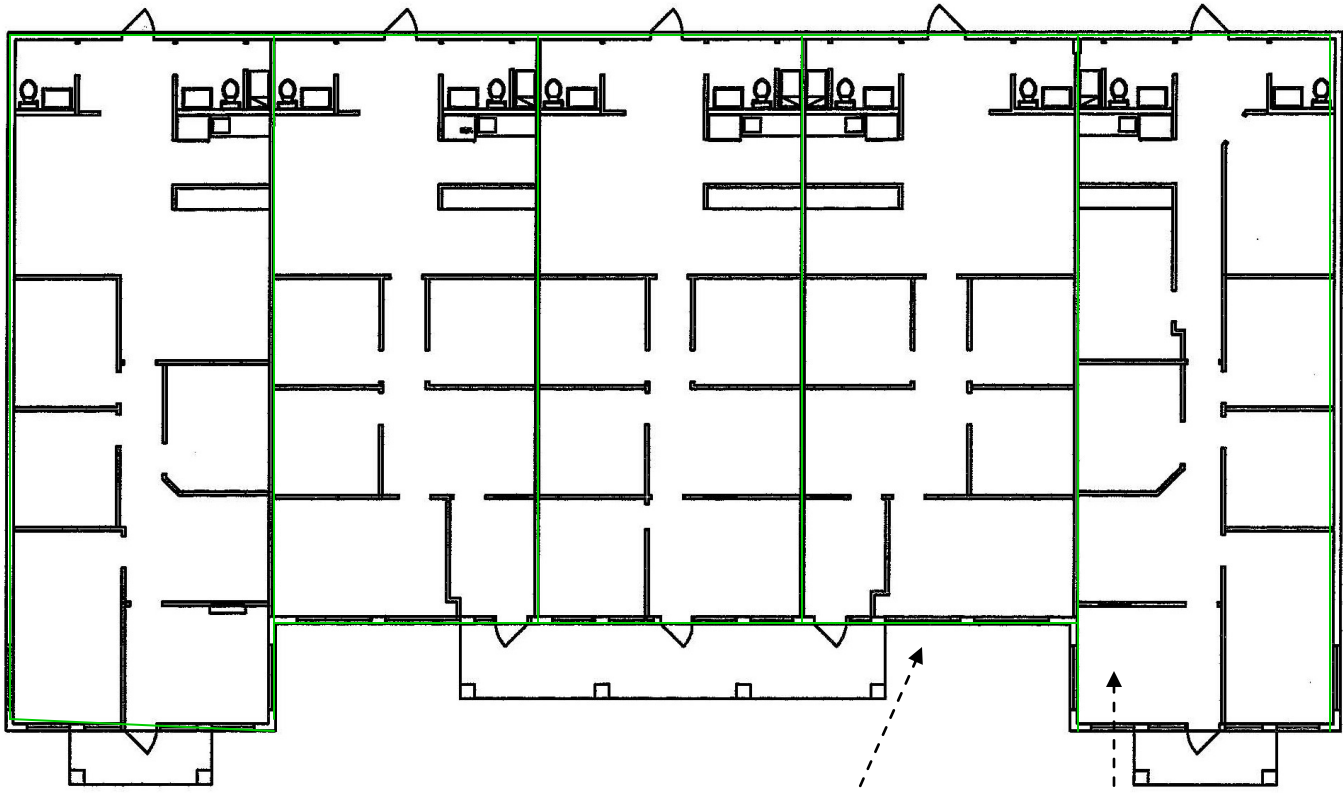
9800 US 441, Suite(s) 103 & 104, Leesburg, FL 34788

dan@dltcommercial.com



FLOOR PLAN
 NOT TO SCALE
Bldg "D"





888 DUNCAN DR.
1625 SF

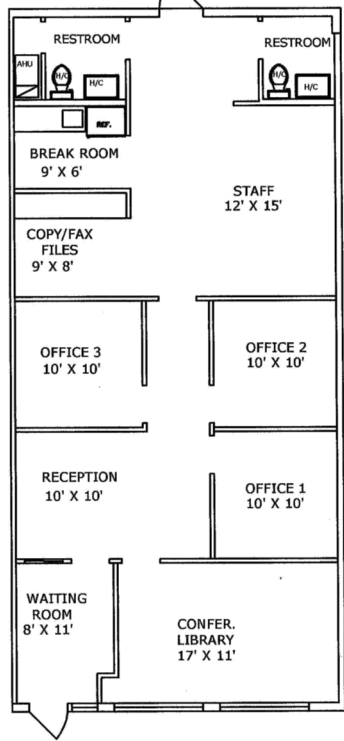
886 DUNCAN DR.
1375 SF

884 DUNCAN DR.
1375 SF

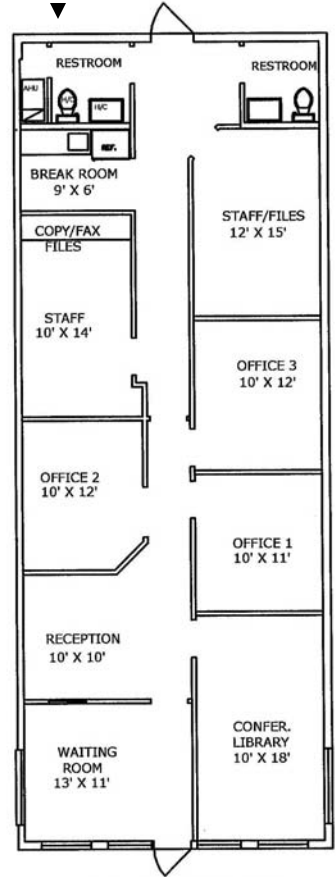
882 DUNCAN DR.
1375 SF

880 DUNCAN DR.
1625 SF

BUILDING B



882 DUNCAN DRIVE
1375 SF



880 DUNCAN DRIVE
1625 SF

Building "C" & "B"
Are the Same Floor Plan
Lease Rate \$12 psf Gross + Sales Tax
& \$45 per month per unit for Dumpster
Flexible Terms / Beautiful Property /
Well Maintained Building & Landscaping

