

THREE FOUNTAINS PROFESSIONAL BUILDING

4970 SOUTH 900 EAST, MURRAY, UTAH 84117

FOR LEASE
\$11.00/SF
FULL SERVICE



PROPERTY HIGHLIGHTS

- Basement – Unit A: 628 SF
- Basement – Unit B: 831 SF
- Basement – Combined Units: 1,459 SF
- Competitive lease rates of \$11/SF Full Service
- Tenant Improvement Allowance Available
- Great Location in the Three Fountains Professional Plaza with close proximity to Van Winkle Expressway and the Ivy Place Shopping Village
- On-Premise Tenant Parking with 5 Parking Spots

PROPERTY OVERVIEW

Three Fountains Professional Plaza is a professional and medical office park. The property is located on 9th East and is within close proximity to Van Winkle Expressway and the Ivy Place Shopping Village. The available spaces (Unit A: 628 SF & Unit B: 831 SF) are in the basement of a dental office and can be combined for a total of 1,459 SF. Tenant is allotted on-premise parking of 5 spots, and a TI allowance may be provided to remodel the space. Rate includes utilities, building services and property expenses.

SKYE GALLEY

801.578.5526

skye.galley@ngkf.com



376 East 400 South, Suite 120 | Salt Lake City, Utah 84111
801.578.5555 | www.ngacres.com

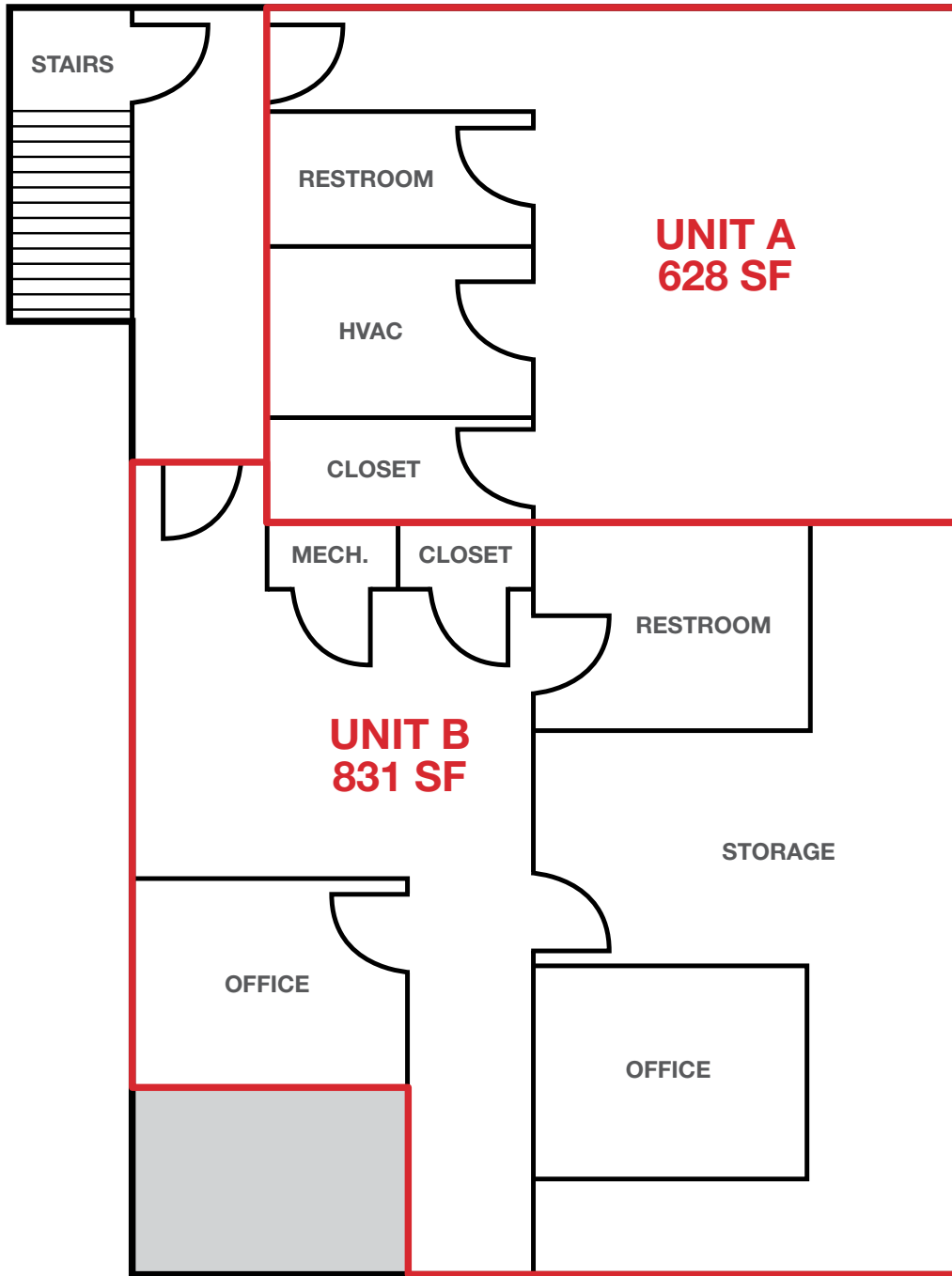
This document has been prepared by Newmark Knight Frank for advertising and general information purposes only. While the information contained herein has been obtained from what are believed to be reliable sources, the same has not been verified for accuracy or completeness. Newmark Knight Frank accepts no responsibility or liability for the information contained in this document. Any interested party should conduct an independent investigation to verify the information contained herein.

THREE FOUNTAINS PROFESSIONAL BUILDING

4970 SOUTH 900 EAST, MURRAY, UTAH 84117

FOR LEASE
\$11.00/SF
FULL SERVICE

TOTAL: 1,459 SF



THREE FOUNTAINS PROFESSIONAL BUILDING

4970 SOUTH 900 EAST, MURRAY, UTAH 84117

FOR LEASE
\$11.00/SF
FULL SERVICE

PHOTOS – UNIT A



THREE FOUNTAINS PROFESSIONAL BUILDING

4970 SOUTH 900 EAST, MURRAY, UTAH 84117

FOR LEASE
\$11.00/SF
FULL SERVICE

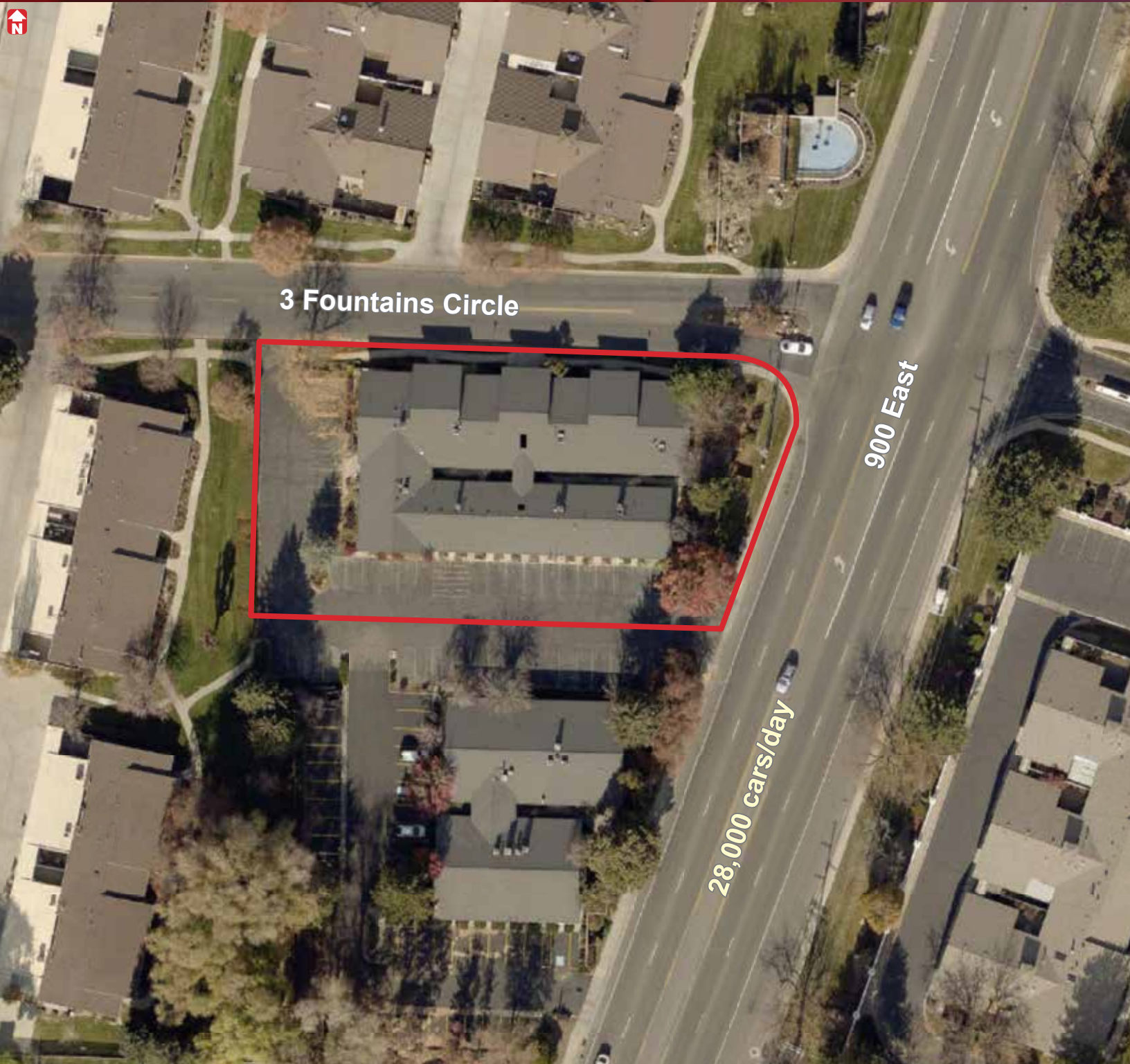
PHOTOS - UNIT B



THREE FOUNTAINS PROFESSIONAL BUILDING

4970 SOUTH 900 EAST, MURRAY, UTAH 84117

FOR LEASE
\$11.00/SF
FULL SERVICE



3 Fountains Circle

900 East

28,000 cars/day



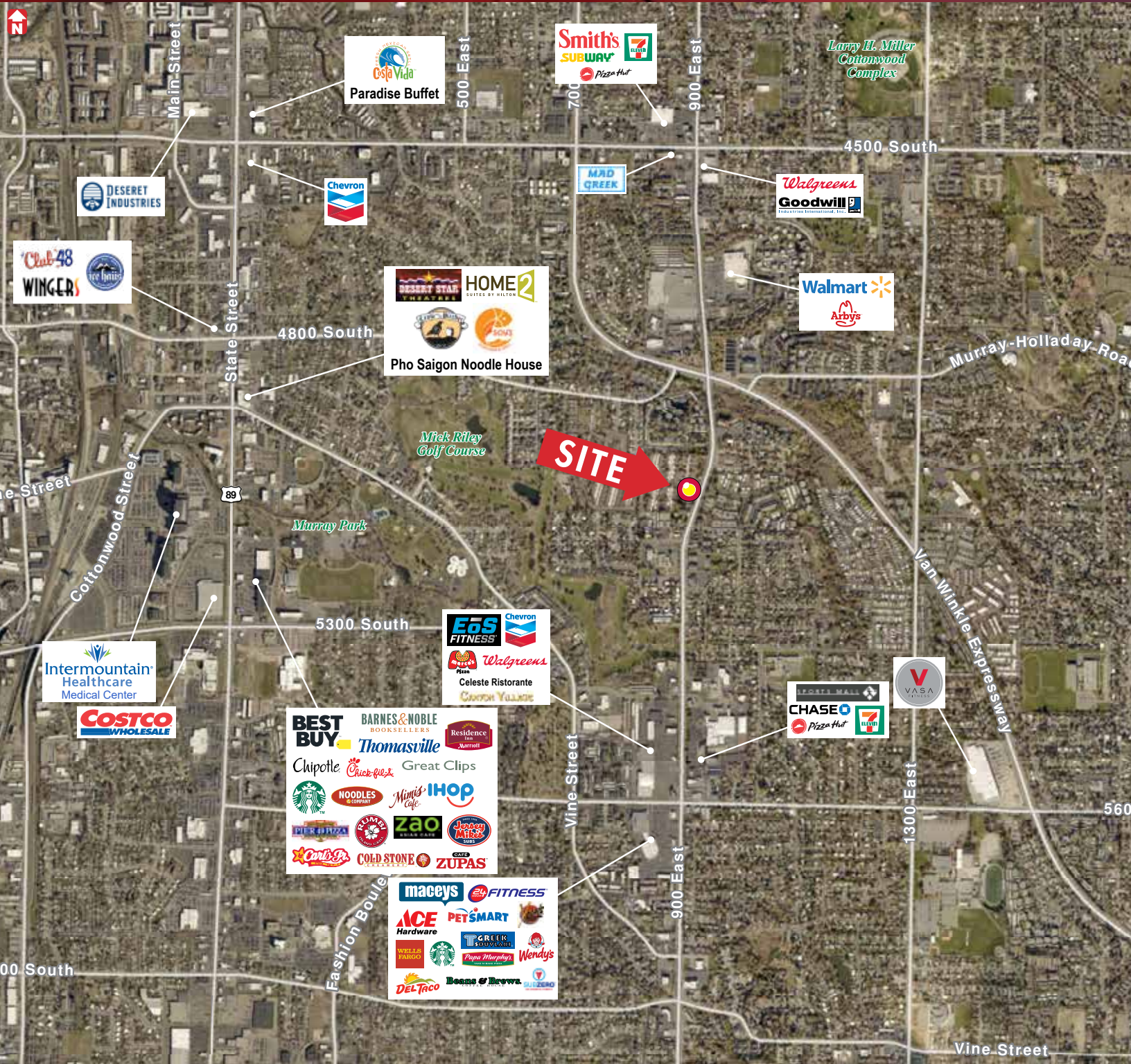
376 East 400 South, Suite 120 | Salt Lake City, Utah 84111
801.578.5555 | www.ngacres.com

This document has been prepared by Newmark Knight Frank for advertising and general information purposes only. While the information contained herein has been obtained from what are believed to be reliable sources, the same has not been verified for accuracy or completeness. Newmark Knight Frank accepts no responsibility or liability for the information contained in this document. Any interested party should conduct an independent investigation to verify the information contained herein.

THREE FOUNTAINS PROFESSIONAL BUILDING

4970 SOUTH 900 EAST, MURRAY, UTAH 84117

FOR LEASE
\$11.00/SF
FULL SERVICE



376 East 400 South, Suite 120 | Salt Lake City, Utah 84111
801.578.5555 | www.ngacres.com

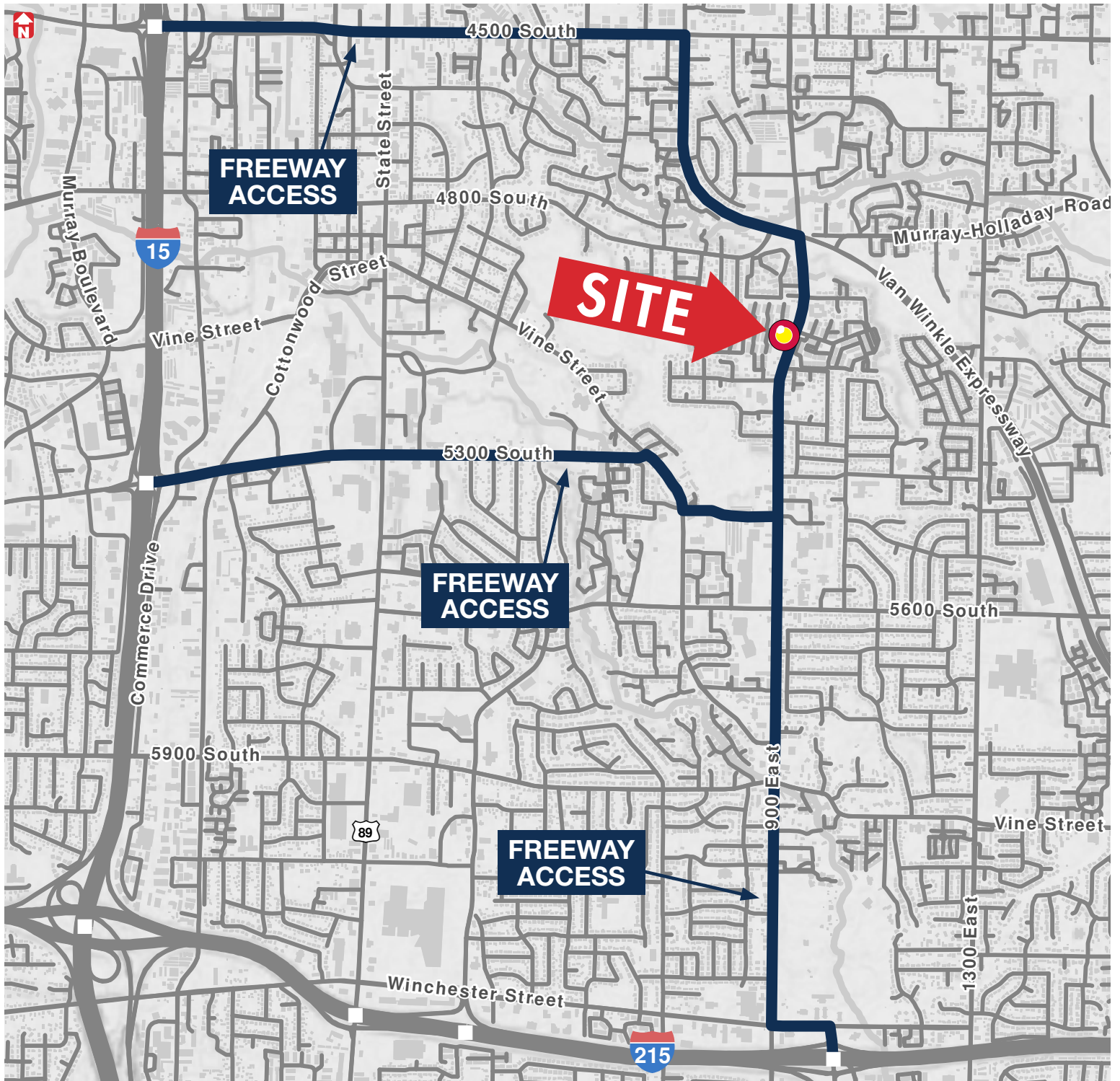


This document has been prepared by Newmark Knight Frank for advertising and general information purposes only. While the information contained herein has been obtained from what are believed to be reliable sources, the same has not been verified for accuracy or completeness. Newmark Knight Frank accepts no responsibility or liability for the information contained in this document. Any interested party should conduct an independent investigation to verify the information contained herein.

THREE FOUNTAINS PROFESSIONAL BUILDING

4970 SOUTH 900 EAST, MURRAY, UTAH 84117

FOR LEASE
\$11.00/SF
FULL SERVICE



376 East 400 South, Suite 120 | Salt Lake City, Utah 84111
801.578.5555 | www.ngacres.com



This document has been prepared by Newmark Knight Frank for advertising and general information purposes only. While the information contained herein has been obtained from what are believed to be reliable sources, the same has not been verified for accuracy or completeness. Newmark Knight Frank accepts no responsibility or liability for the information contained in this document. Any interested party should conduct an independent investigation to verify the information contained herein.

THREE FOUNTAINS PROFESSIONAL BUILDING

4970 SOUTH 900 EAST, MURRAY, UTAH 84117

FOR LEASE
\$11.00/SF
FULL SERVICE



376 East 400 South, Suite 120 | Salt Lake City, Utah 84111
801.578.5555 | www.ngacres.com



This document has been prepared by Newmark Knight Frank for advertising and general information purposes only. While the information contained herein has been obtained from what are believed to be reliable sources, the same has not been verified for accuracy or completeness. Newmark Knight Frank accepts no responsibility or liability for the information contained in this document. Any interested party should conduct an independent investigation to verify the information contained herein.