

PAD SITES AVAILABLE | GROUND LEASE



For more information, contact:

ANNIE O'CONNOR

Senior Associate

804 697 3451

annie.oconnor@thalhimer.com

ALEX WOTRING

Associate

804 344 7163

alex.wotring@thalhimer.com

Thalhimer Center
11100 W. Broad Street
Glen Allen, VA 23060
www.thalhimer.com

Property Features

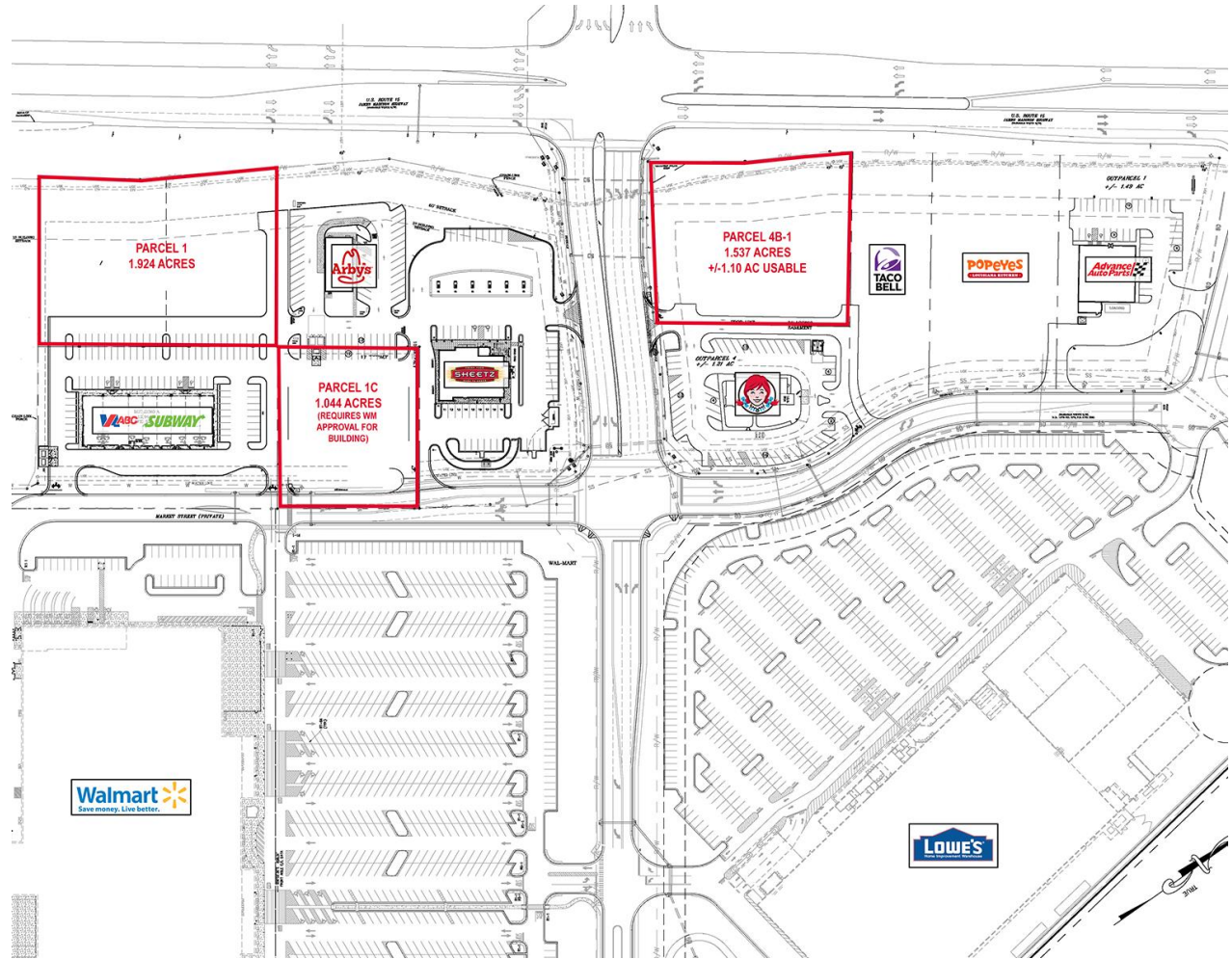
- Multiple pad sites available for ground lease
- High visibility on Route 15
- Located in front of high-performing Walmart & Lowe's centers
- Easy access to Interstate 64
- Across from Spring Creek residential community
- 8,300 VPD – James Madison Highway (Route 15)
- 36,000 VPD – Interstate 64

Join Nearby Retailers



Demographics

	5 Miles	10 Miles	15 Miles
Population	8,433	34,602	78,605
Avg. HH Income	\$81,978	\$94,905	\$91,578
Est. Households	2,797	13,007	31,588



For more information, contact:

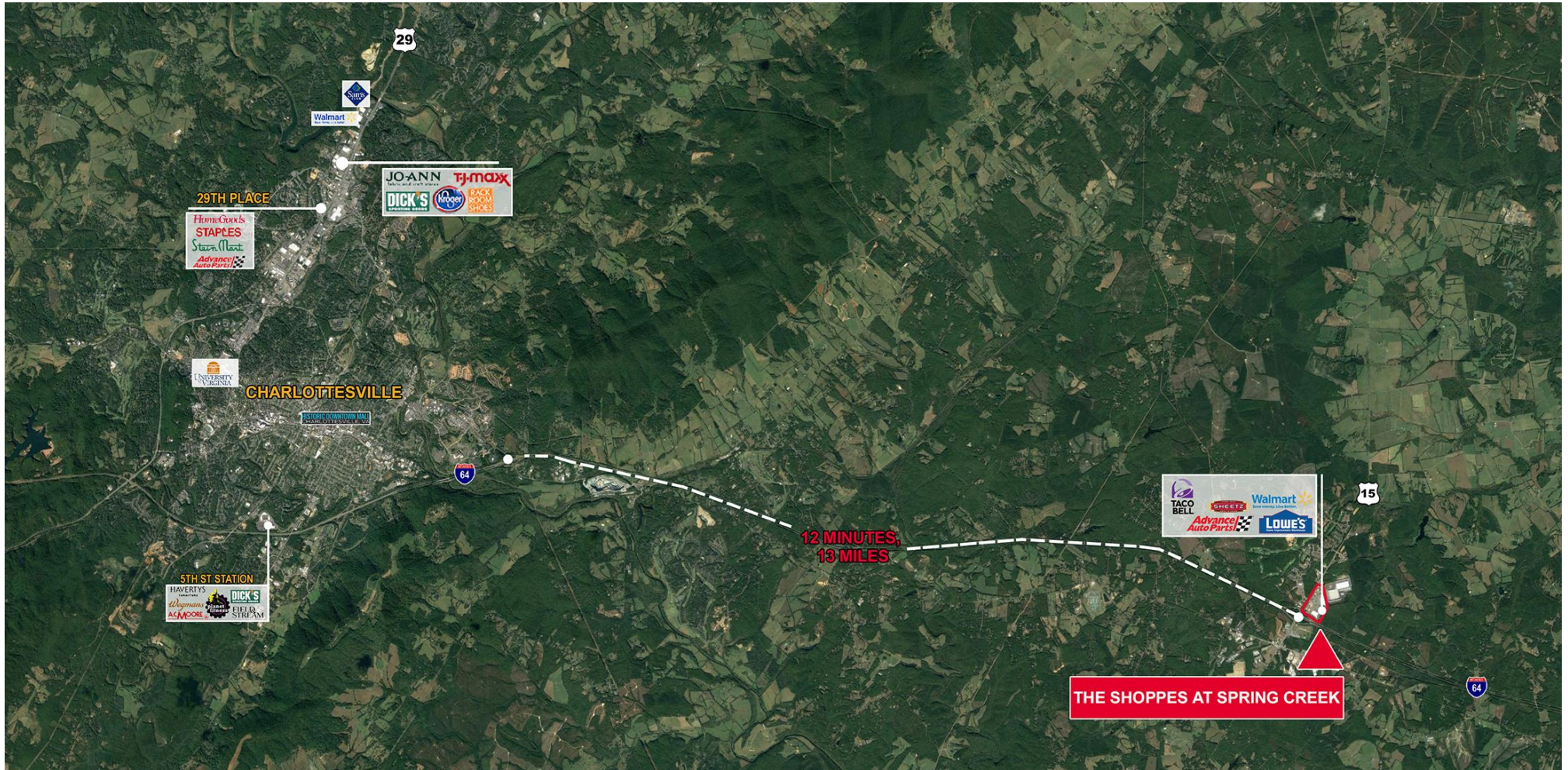
ANNIE O'CONNOR

Senior Associate
804 697 3451
annie.oconnor@thalhimer.com

ALEX WOTRING

Associate
804 344 7163
alex.wotring@thalhimer.com

Thalhimer Center
11100 W. Broad Street
Glen Allen, VA 23060
www.thalhimer.com



For more information, contact:

ANNIE O'CONNOR

Senior Associate

804 697 3451

annie.oconnor@thalhimer.com

ALEX WOTRING

Associate

804 344 7163

alex.wotring@thalhimer.com

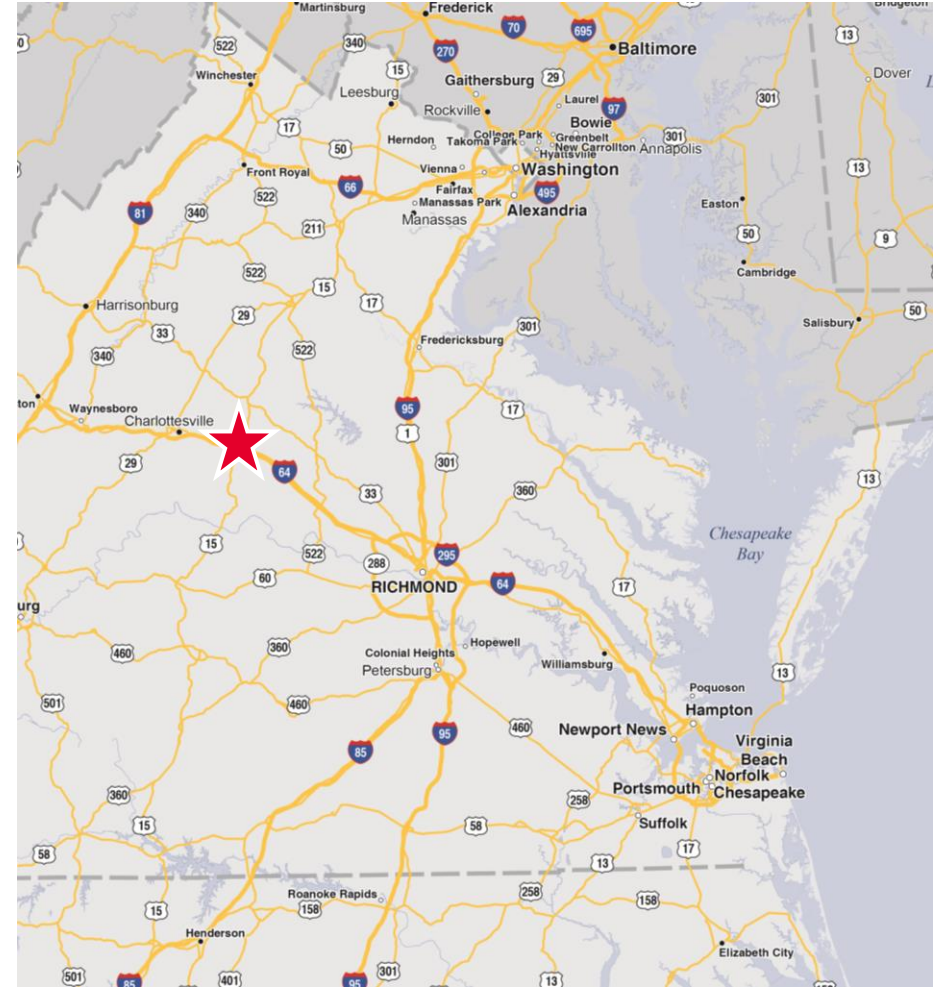
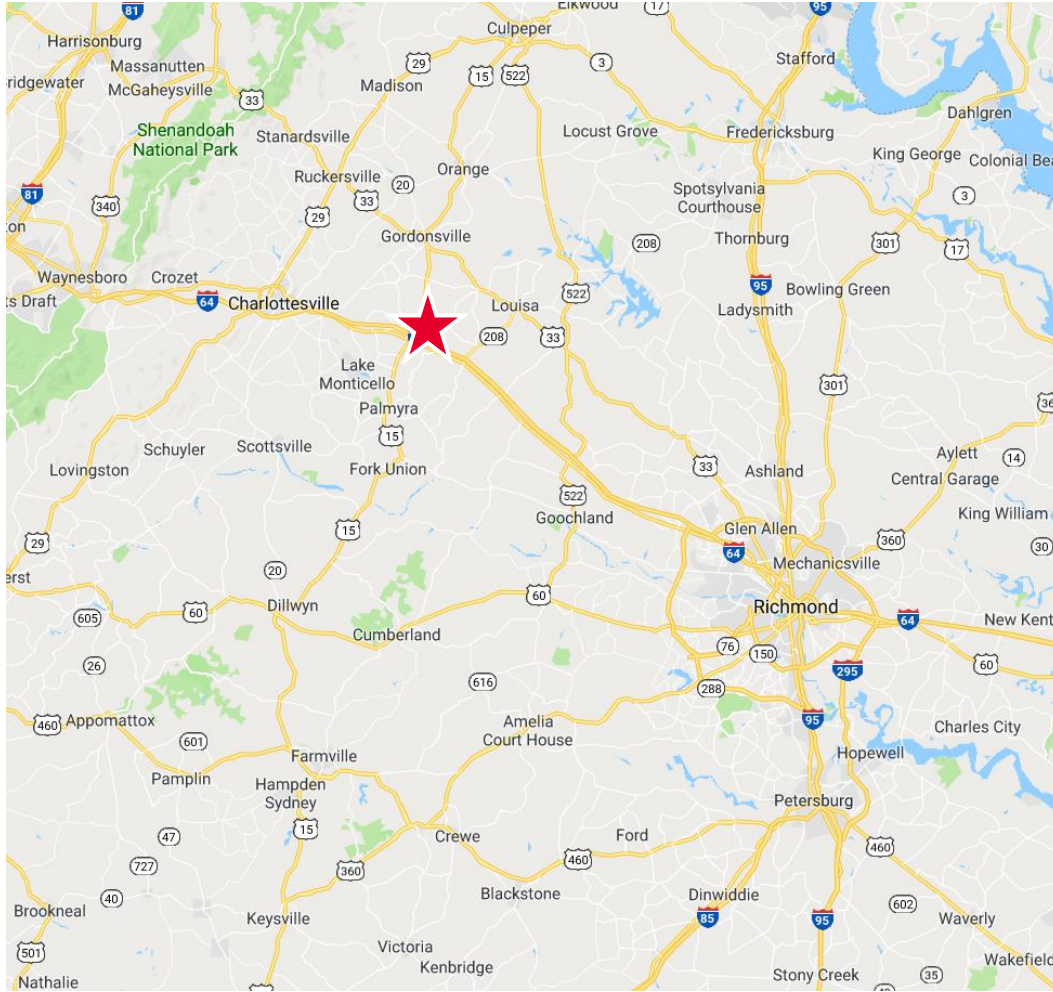
Thalhimer Center
11100 W. Broad Street
Glen Allen, VA 23060
www.thalhimer.com



RETAIL FOR LEASE

The Shoppes at Spring Creek

I-64 and Route 15 | Zion Crossroads (Louisa County), Virginia



For more information, contact:

ANNIE O'CONNOR

Senior Associate

804 697 3451

annie.oconnor@thalhimer.com

ALEX WOTRING

Associate

804 344 7163

alex.wotring@thalhimer.com

Thalhimer Center
11100 W. Broad Street
Glen Allen, VA 23060
www.thalhimer.com

Independently Owned and Operated / A Member of the Cushman & Wakefield Alliance

Cushman & Wakefield | Thalhimer © 2015. No warranty or representation, express or implied, is made to the accuracy or completeness of the information contained herein, and same is submitted subject to errors, omissions, change of price, rental or other conditions, withdrawal without notice, and to any special listing conditions imposed by the property owner(s). As applicable, we make no representation as to the condition of the property (or properties) in question.