



FOR LEASE



4945 Iris Street | Wheat Ridge, CO

- Flex Space: 1,966 SF
- Clearance: 14'
- Zoned: PID
- Year Build: 1978
- Lease Rate: \$8/SF NNN

Special Features:

- 10' drive in
- Loading dock
- Paved Parking

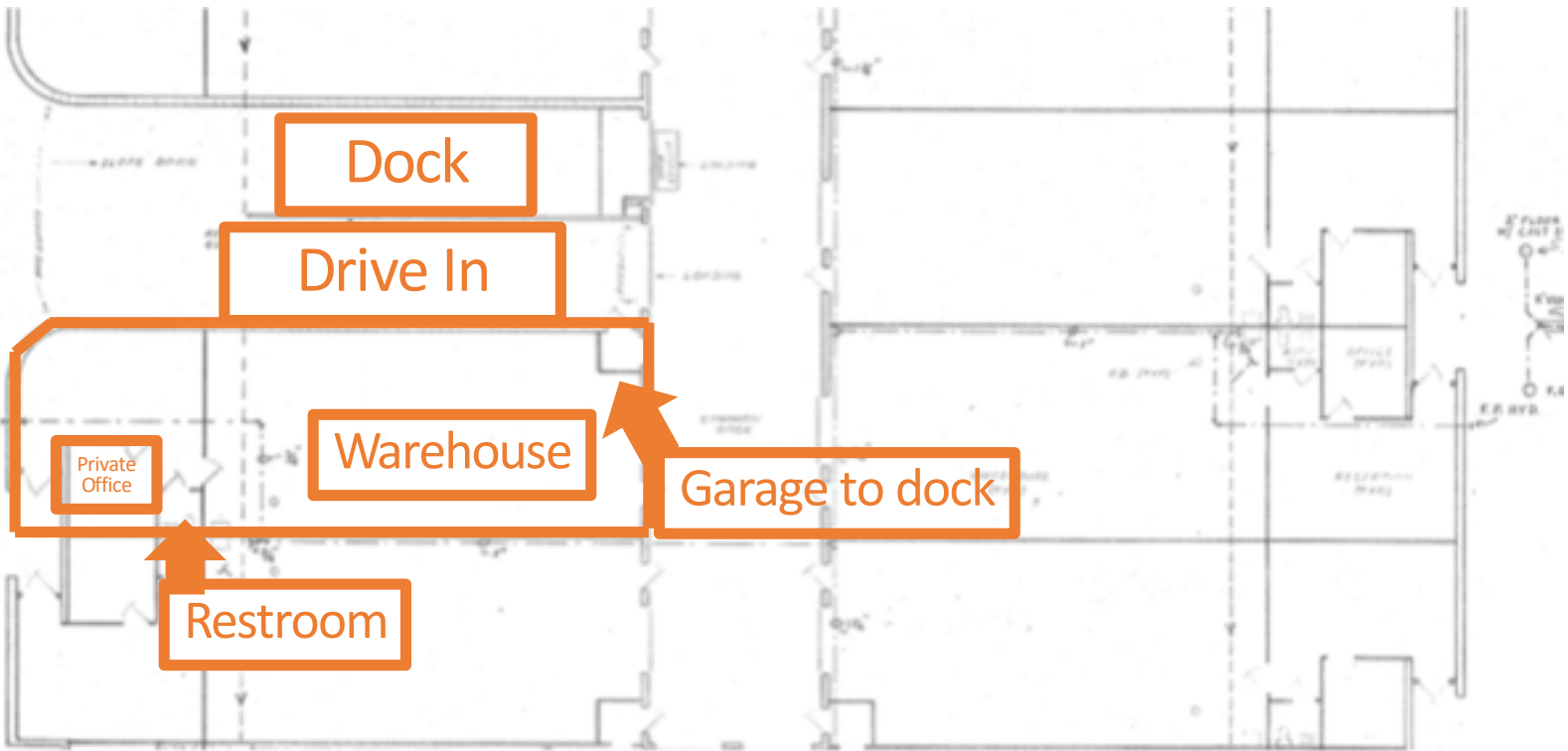


Tanner Digby
tanner@marcumcommercial.com
720-402-7578

Scott A. Marcum
scott@marcumcommercial.com
303-437-5590

No Warranty or representation is made as to the accuracy of the foregoing information.
Terms of sale or lease and availability are subject to change or withdrawal without notice





Available Unit With Great Access to I-70

