

FOR SUBLEASE

# PLUG & PLAY SPACE

±3,655 SF

313 WASHINGTON STREET

Newton, MA



## PROPERTY FEATURES

CBRE/New England is pleased to present 313 Washington Street in Newton, Massachusetts. This site is conveniently located directly off Interstate 90 with access to Route 495 and Route 20 and just a 14-minute drive from Downtown Boston. 313 Washington Street features building roofdeck, extensive window line, an efficient floor plate and underground parking.

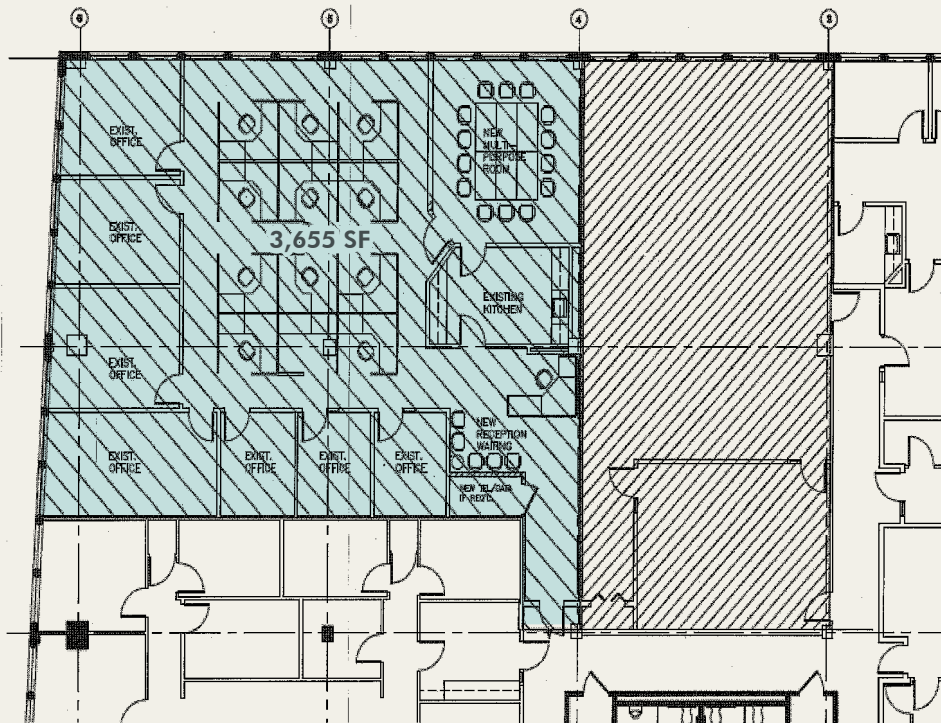
## PROXIMITY

- + **Bus Stop:** 1-minute walk
- + **Interstate 90:** 1 minute
- + **Watertown Square:** 5-minute walk
- + **Route 128:** 8 minutes
- + **Cambridge:** 11 minutes
- + **Boston/Logan Airport:** 14 minutes (8.6 miles)



# ±3,655 PLUG & PLAY SPACE

FOR SUBLEASE  
313 WASHINGTON STREET  
Newton, MA



## HIGHLIGHTS

- + Located at Newton Corner with immediate access to I-90/ Massachusetts Turnpike via Exit 17
- + Walking distance to several restaurants including Bertucci's, Amarin of Thailand, Buff's Pub, and Dunkin' Donuts
- + Building roof deck available for tenant use
- + Located directly across from the 250-room CrownePlaza Boston - Newton hotel featuring fitness facility and conference/ meeting space



## PROPERTY SPECIFICATIONS

- + **Available SF:** ±3,655 SF (3rd floor)
- + **Furniture:** Available
- + **LED:** May 31, 2021
- + **Parking:** 2/1,000 SF covered parking



## CONTACT US

### MATT SICILIANO

First Vice President  
+1 617 912 7051  
matthew.siciliano@cbre-ne.com

© 2018 CB Richard Ellis - N.E. Partners, LP. This information has been obtained from sources believed reliable, but has not been verified for accuracy or completeness. You should conduct a careful, independent investigation of the property and verify all information. Any reliance on this information is solely at your own risk. CBRE and the CBRE logo are service marks of CBRE, Inc. All other marks displayed on this document are the property of their respective owners. Photos herein are the property of their respective owners. Use of these images without the express written consent of the owner is prohibited.

CBRE and the CBRE logo are service marks of CBRE, Inc. and/or its affiliated or related companies in the United States and other countries. All other marks displayed on this document are the property of their respective owners.