

SOUTH COLLEGE RETAIL CENTER, PHASE I & II

S College St, Auburn, AL 36832

EXECUTIVE SUMMARY



LOCATION OVERVIEW

Auburn is the largest city in Eastern Alabama, and it is a principal city of the Auburn-Opelika Metropolitan Area. Auburn-Opelika has an MSA of 160,299 and is Alabama's fastest growing metro area. Home to Auburn University, with an enrollment of 28,939, Auburn is largely driven by the influence of education. Auburn's retail corridors have seen massive redevelopment efforts over the last decade as population numbers continue to rise.



PROPERTY HIGHLIGHTS

- Phase I has 1,590 SF available
- Phase II has up to 4,900 SF available with a drive thru
- Sites located along a major corridor in rapidly growing Auburn, AL, home to Auburn University with a student population of 29K
- Traffic Count: 26,500 AADT, South College Street
- Full access onto College Street
- Call for more information

DEMOGRAPHICS

	3 MILES	5 MILES	10 MILES
POPULATION	30,284	60,684	101,237
HOUSEHOLDS	12,204	25,679	41,378
AVERAGE HH INCOME	\$58,657	\$65,315	\$67,111

EXCLUSIVE AGENT(S)

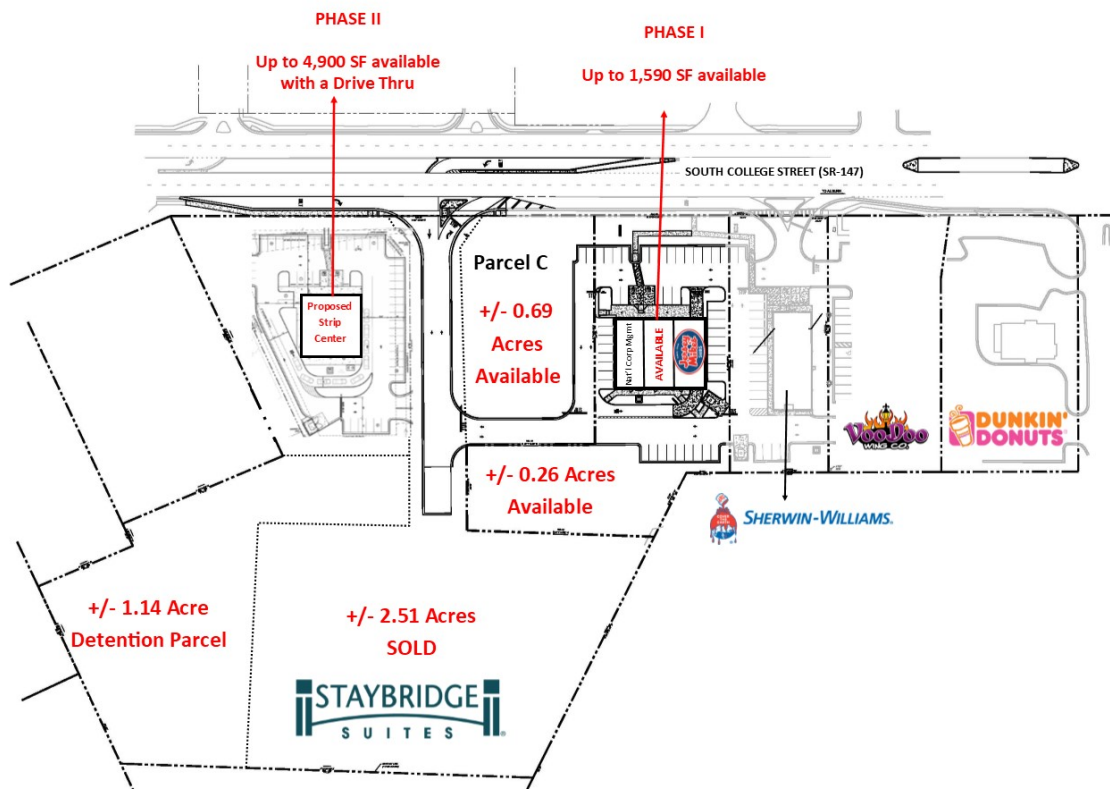
RAY JONES, CCIM • ray.jones@tscg.com • 334.332.8424

ALEXANDER BARINEAU • alexander.barineau@tscg.com • 205.776.6715

SOUTH COLLEGE RETAIL CENTER, PHASE I & II

S College St, Auburn, AL 36832

SITE PLAN



EXCLUSIVE AGENT(S)

RAY JONES, CCIM • ray.jones@tscg.com • 334.332.8424

ALEXANDER BARINEAU • alexander.barineau@tscg.com • 205.776.6715

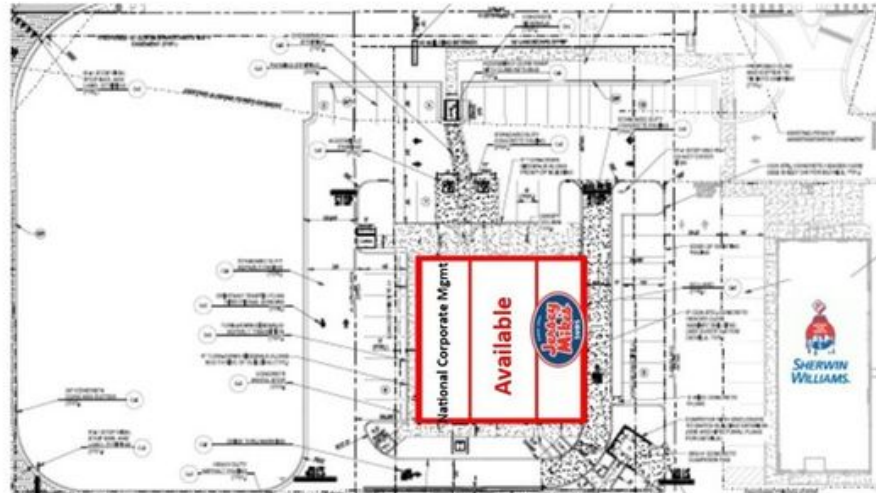
SOUTH COLLEGE RETAIL CENTER, PHASE I & II

S College St, Auburn, AL 36832

SITE PLAN

PHASE I

1,590 SF
Available



PHASE II

4,900 SF
Available
W/Drive Thru



EXCLUSIVE AGENT(S)

RAY JONES, CCIM • ray.jones@tscg.com • 334.332.8424

ALEXANDER BARINEAU • alexander.barineau@tscg.com • 205.776.6715