

# FOR LEASE

## ± 17,100 - 34,200 SF INDUSTRIAL SPACE



Warehouse Solutions  
for Last-Mile Logistics

### 4150 Kellway Circle | Addison, TX 75001



### PROPERTY SUMMARY

LOCATION	Close Proximity to Dallas North Tollway	LOADING	Front Load Configuration
BUILDING SIZE	<b>34,200 Total SF</b> Available: ± 17,100 SF - 34,200 SF	CLEAR HEIGHT	22' -24' Clear Height
ZONING	Industrial-1 District	SPRINKLER	Fully Sprinkled
TRUCK DOCKS	5 Dock High Doors 1 Ramped Door	MISC	Existing Crane Freestanding Building



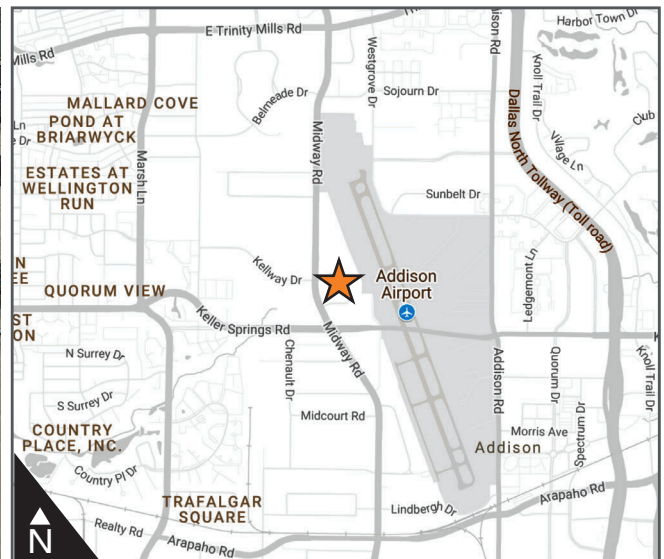
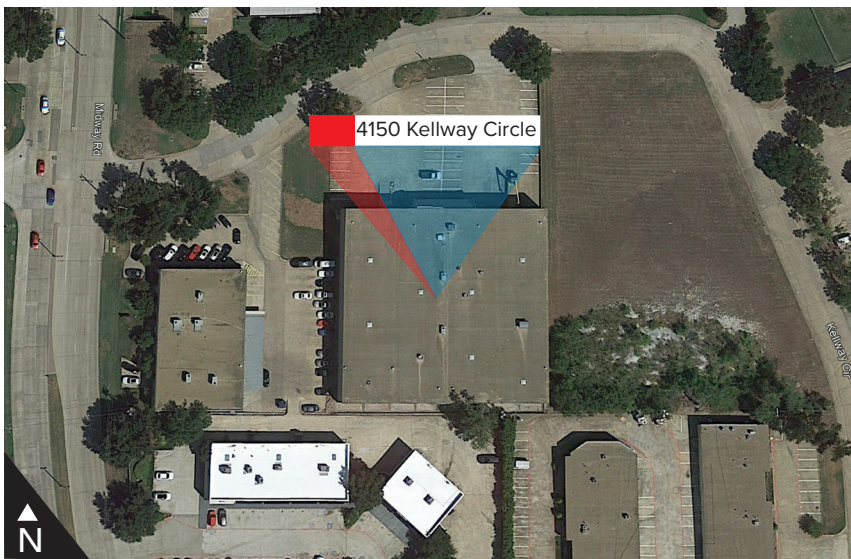
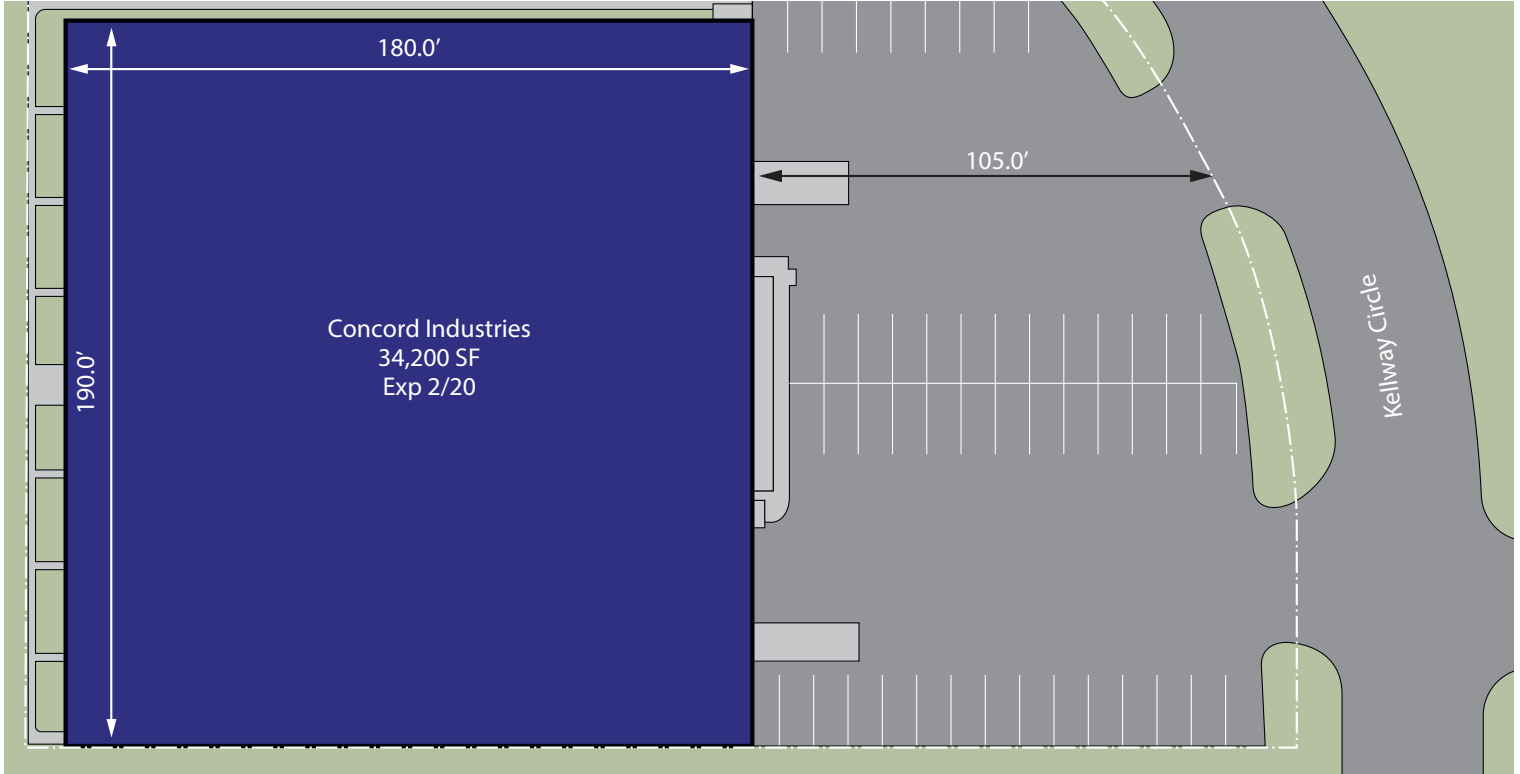
**TIMOTHY VELER, CCIM**  
972-774-2541  
timothy.veler@transwestern.com

**BRETT OWENS, SIOR**  
972-774-2568  
brett.owens@transwestern.com

**JARED CROWLEY**  
972-546-2322  
jcrowley@clns.com



## 4150 Kellway Circle | Addison, TX 75001



**TIMOTHY VELER, CCIM**  
972-774-2541  
timothy.veler@transwestern.com

**BRETT OWENS, SIOR**  
972-774-2568  
brett.owens@transwestern.com

**JARED CROWLEY**  
972-546-2322  
jcrowley@clns.com

