

## Pacific Parkway Center

12909 SW 68th Parkway Portland • 1,981 sq.ft. Office



### LOCATION

Building B  
12909 SW 68th Parkway, Suite 140  
Portland OR 97223

### TOTAL SQ. FT.

1,981 sq.ft.

### FEATURES

Building Conference Room  
4/1,000 parking ratio  
Easy access to I-5

### ANNUAL RATE

\$30.00/sq.ft.  
Full service

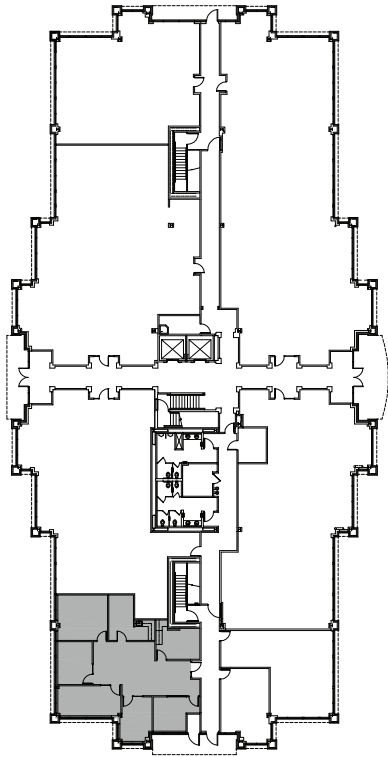
### LEASING CONTACT

Sam Briggs  
samb@pactrust.com  
503-624-6300

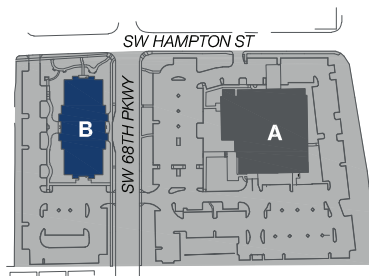
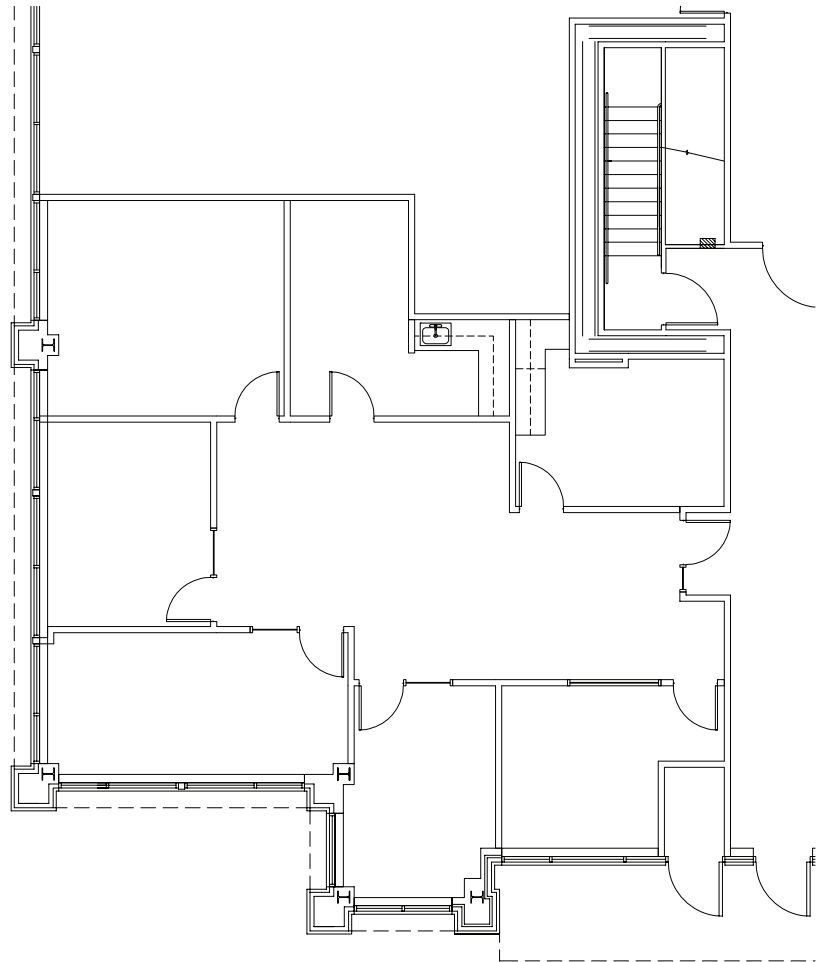
Dave Hicks  
daveh@pactrust.com  
503-624-6300







**FIRST FLOOR  
BUILDING PLAN**



PACIFIC PARKWAY CENTER  
Portland, OR 97223



15350 SW Sequoia Pkwy Suite 300 Portland OR 97224 • 503.624.6300 • [pactrust.com](http://pactrust.com)

*The square footage and rates quoted herein are subject to change. Square footage and rates are finalized with a signed lease agreement.*

