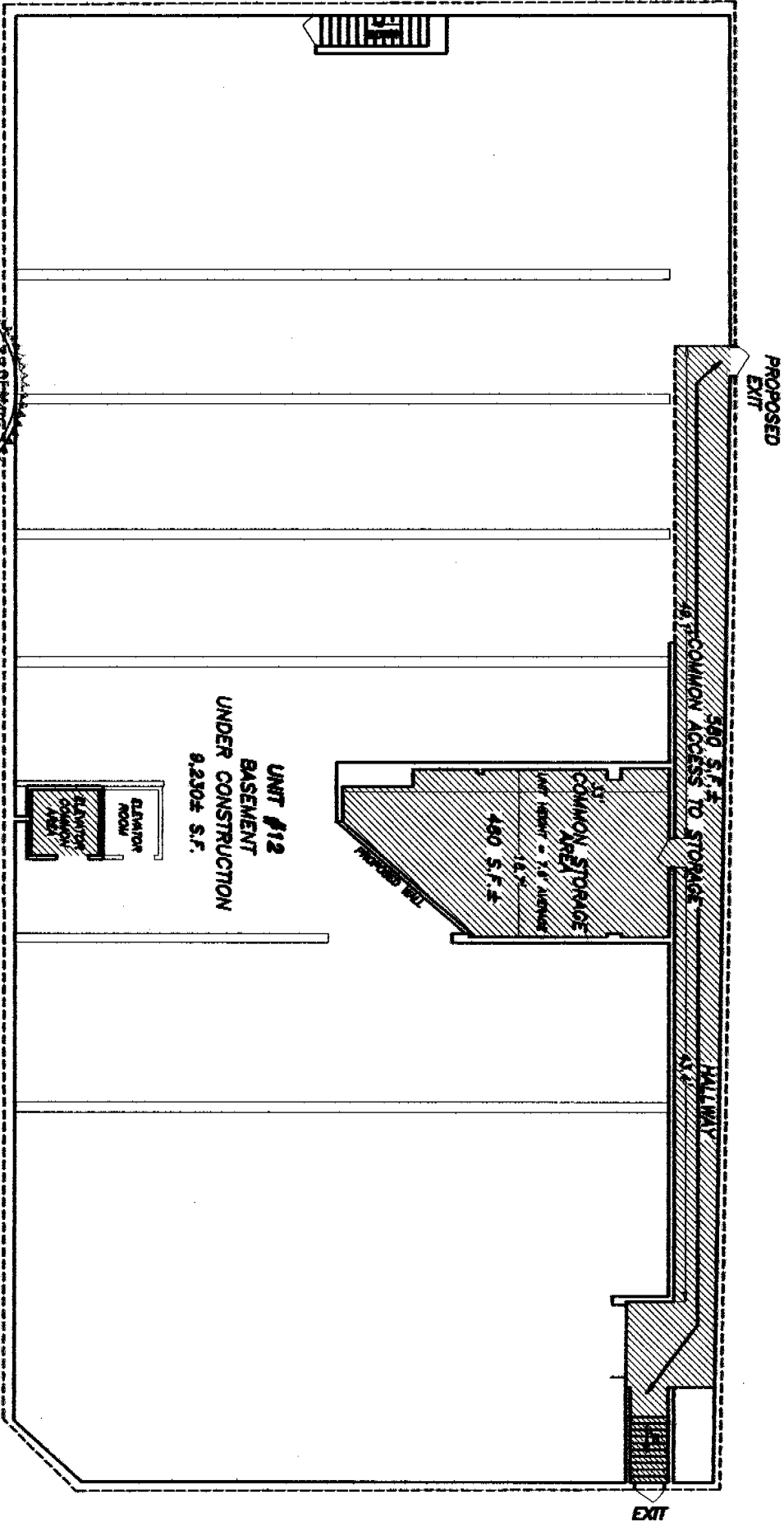


SCALE IN FEET



"BRISTOL BUILDING CONDOMINIUM"
 NEW BEDFORD, MA (BRISTOL COUNTY)
 UNIT FLOOR PLAN

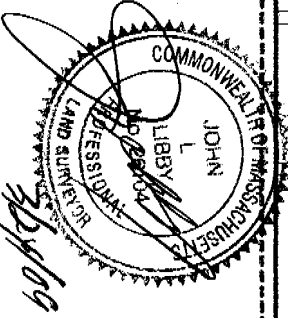
UNIT #12, SHEET 3 OF 3 SHEETS



THE NAME OF THE BUILDING IS BRISTOL BUILDING

BASEMENT

TOTAL AREA
 UNIT #12: - 19,764± SQUARE FEET



I HEREBY CERTIFY THAT (I): THIS PLAN SHOWS A PORTION OF UNIT 12, BEING CONVEYED AND OF THE IMMEDIATE ADJOINING UNITS(S), AND THAT IT FULLY AND ACCURATELY DEPICTS THE LAYOUT, LOCATION, DIMENSIONS, APPROXIMATE AREA, MAIN ENTRANCE AND IMMEDIATE COMMON AREA TO WHICH IT HAS ACCESS, AS-BUILT.

DATE: 3/24/06
 PROFESSIONAL LAND SURVEYOR #26104

JOHN L. LIBBY CONSULTING
 CONSULTING LAND SURVEYORS
 97 COVE STREET, NEW BEDFORD, MA 02744

(508) 999-0106 Vanlibby@libbyconsulting.com FAX (508) 999-2860

FILE: #2005-025 SCALE: 1" = 16' DECEMBER 20, 2005, REVISED: MARCH 20, 2006