



23200 Stringtown Road

CLARKSBURG, MD 20871

3.6AC FOR SALE OR LEASE AT MAJOR INTERSECTION OF MD-355 AND STRINGTOWN RD



- ### Property Highlights
- Seeking: Gas Station/C-Store, Pharmacy, Restaurants, Daycare, Banks, Carwash, Urgent Care and many others
 - 3.6ac: zoned CRT-0.5, C-0.5, R-0.5, H-45
 - Located at the major intersection of Stringtown Rd & MD 355
 - Parcel can be divided
 - Drive thru is a conditional use

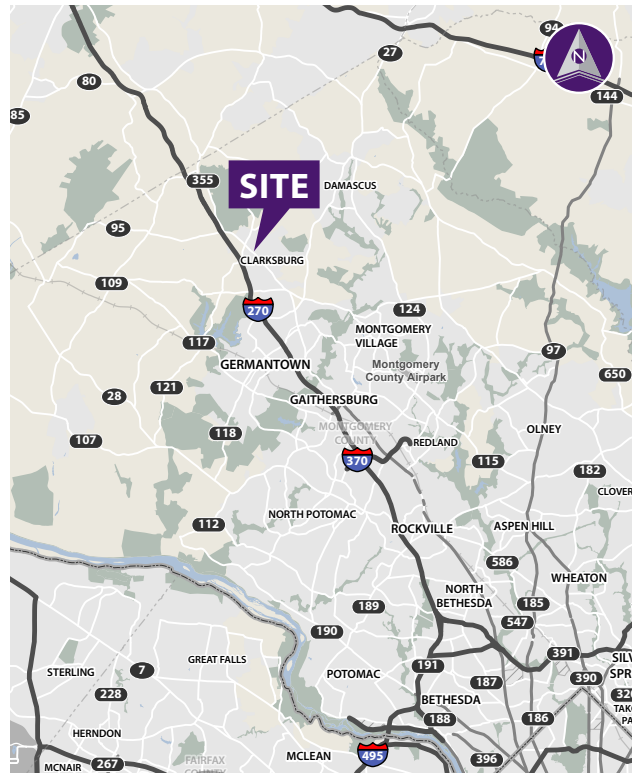
Demographics (2019 Estimated)

	3 Mile	5 Mile	10 Mile
Population	37,431	105,809	364,223
Average HH Income	\$167,349	\$135,853	\$133,180
Number of Households	11,456	35,462	124,616

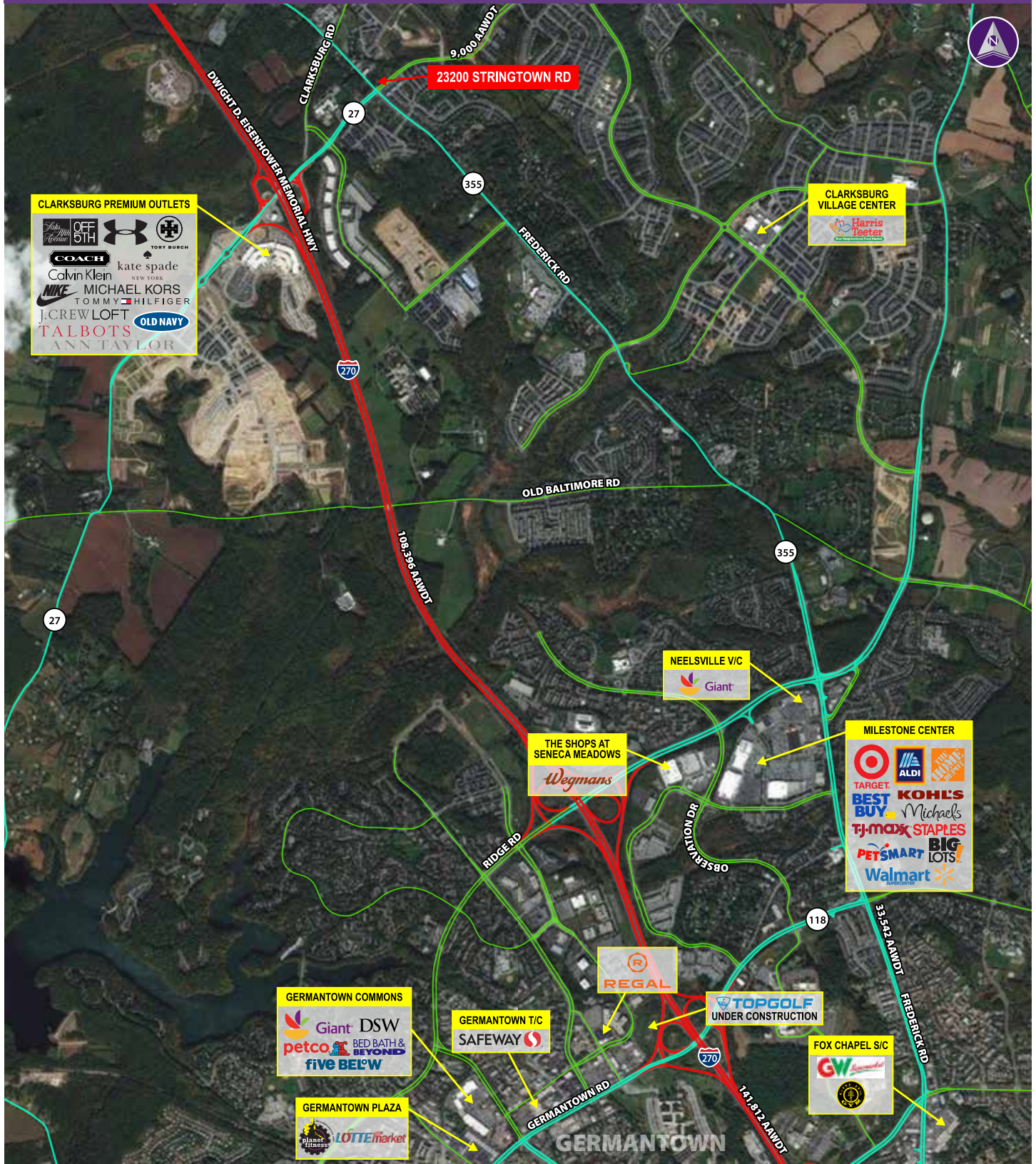
Please Contact

Spencer B. Ward
 301.801.3456 (cell)
 240.482.3614 (direct)
 sward@hrretail.com

David A. Ward
 240.482.3617 (direct)
 301.656.3030 (office)
 dward@hrretail.com



2300 STRINGTOWN ROAD ■ CLARKSBURG, MD



Information herein has been obtained from sources believed to be reliable. While we do not doubt its accuracy, we have not verified it and make no guarantee, warranty or representation about it. Independent confirmation of its accuracy and completeness is your responsibility. H&R Retail, Inc.