

GLOBAL FLAGSHIP RESTAURANT OPPORTUNITY

100 West St.

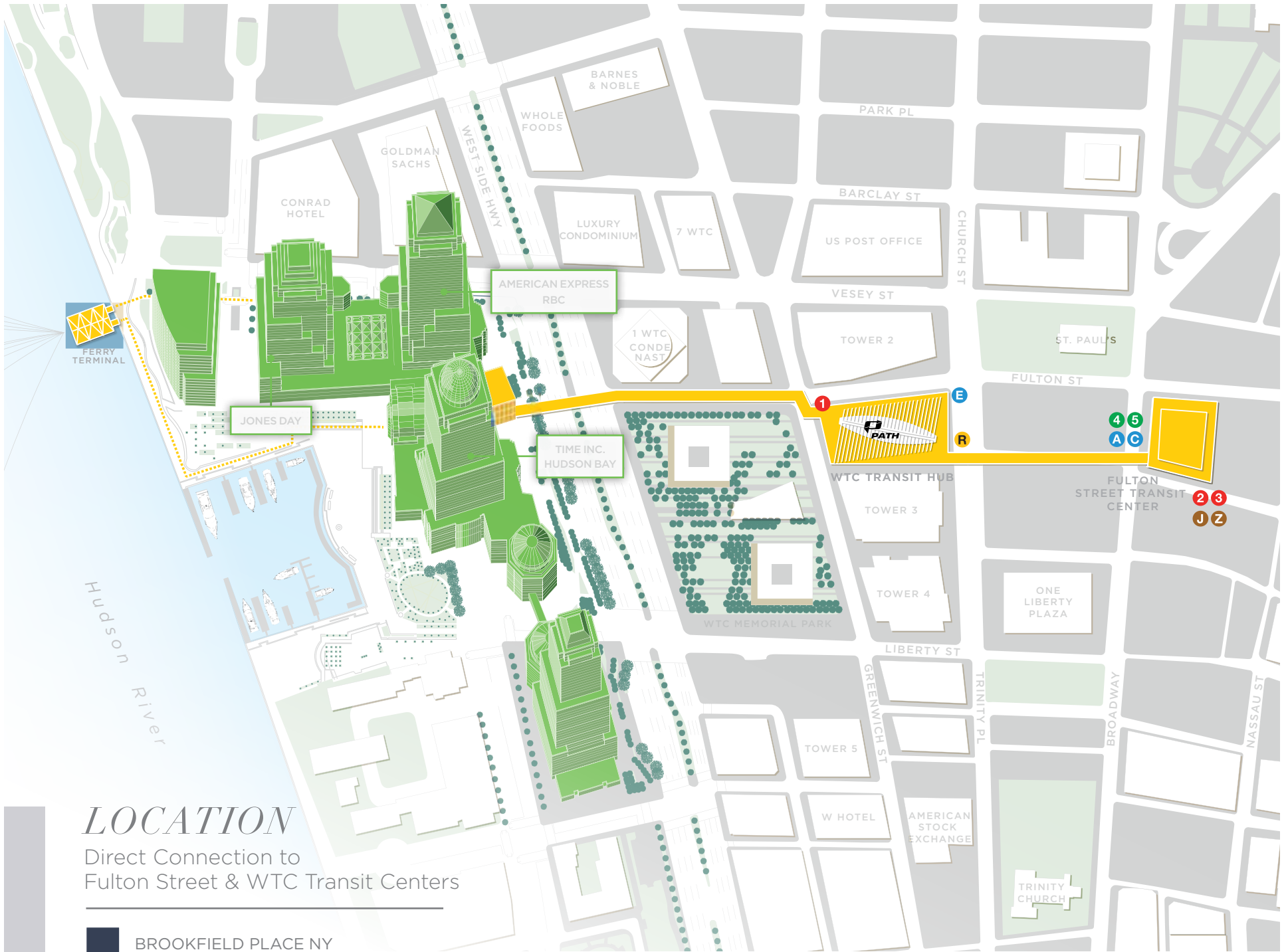


Newmark Grubb
Knight Frank
Retail



www.ngkf.com/retail

Brookfield Place
NEW YORK



LOCATION

Direct Connection to
Fulton Street & WTC Transit Centers

 BROOKFIELD PLACE NY



30,000

RESIDENTIAL UNITS
IN 319 MIXED-USE AND
RESIDENTIAL BUILDINGS
WITH AN ESTIMATED
POPULATION OF
APPROXIMATELY 60,000



CURRENTLY
5,900

UNITS IN 32 BUILDINGS
UNDER CONSTRUCTION
OR PLANNED FOR
DEVELOPMENT



21 M

VISITORS
TO BROOKFIELD PLACE
PER YEAR



TOTAL OFFICE
EMPLOYMENT

267,000

40,000 NEW PRIVATE
SECTOR PAYROLL JOBS
EXPECTED BY 2019



127 M

ANNUAL TRANSIT RIDERS
12 SUBWAY LINES
30 BUS ROUTES
6 FERRY STOPS
2 PATH TRAIN ROUTES
28 CITIBIKE STATIONS



14.2 M

VISITORS
TO LOWER
MANHATTAN
IN 2015



84 M SF

OF TOTAL OFFICE SPACE
IN LOWER MANHATTAN



11,589

HOTEL ROOMS
IN LOWER
MANHATTAN
AS OF 2016



RETAIL IS ON
THE RISE WITH

1,107

RETAIL STORES
AND RESTAURANTS
IN LOWER MANHATTAN,
110 OF WHICH
OPENED IN 2015 ALONE



OVER

100

YEAR ROUND
CULTURAL EVENTS
AT BROOKFIELD PLACE



33.1 B

IN ANNUAL
SPENDING POWER
IN THE LOCAL MARKET

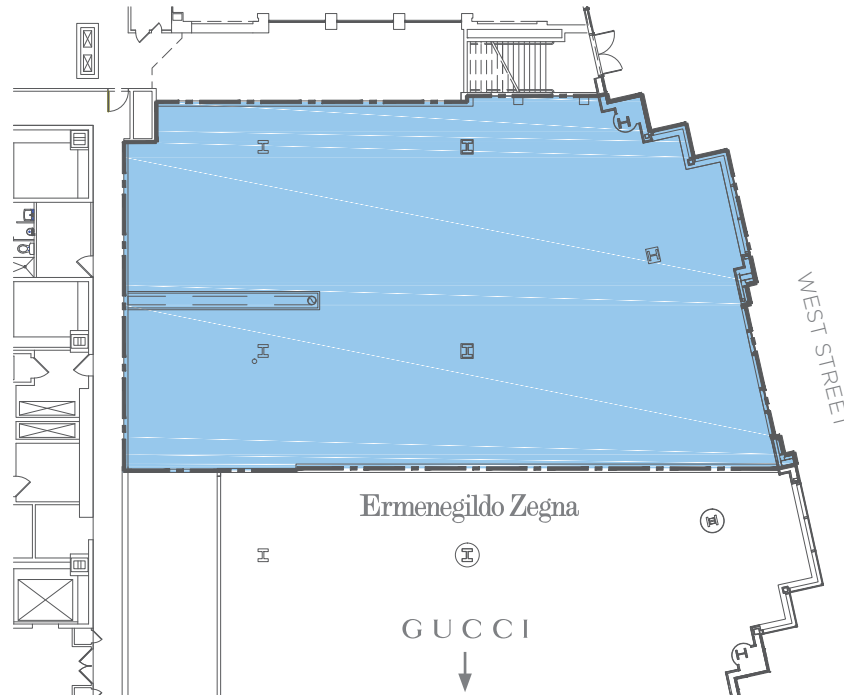


AVERAGE
HOUSEHOLD INCOME

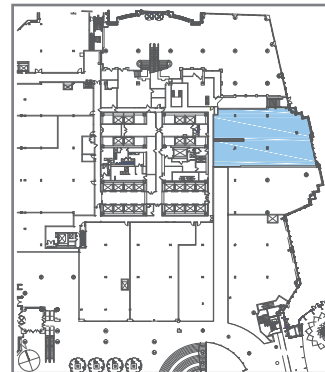
\$206,000

OF THE APPROXIMATELY
60,000 RESIDENTS





- A mezzanine is possible
- 55" of West Street frontage
- Exterior and interior entrances



BROOKFIELD PLACE

SUITE 199 | 4,902 RSF

EXCLUSIVE LEASING AGENTS

MITCHELL N. FRIEDEL
212.372.0719
mfriedel@ngkf.com

JAY LUCHS
310.407.6585
jay.luchs@ngkf.com

ADAM WEINBLATT
212.372.2103
aweinblatt@ngkf.com

REED ZUKERMAN
646.441.3810
rzukerman@ngkf.com

JESSICA FARROW
212.372.2103
aweinblatt@ngkf.com

KELLY TRENTALANCIA
212.850.5431
ktrentalancia@ngkf.com



**Newmark Grubb
Knight Frank**
Retail



Brookfield Place
NEW YORK

www.ngkf.com/retail

The information contained herein has been obtained from sources deemed reliable but has not been verified and no guarantee, warranty or representation, either express or implied, is made with respect to such information. Terms of sale or lease and availability are subject to change or withdrawal without notice.