

24,400 Sq. Ft. Warehouse with Cooler/Freezer Space FOR LEASE

50% Off Rent for 6-Months*



1405 E. 2nd Avenue • Tampa, FL 33605



| | |
|------------------------|--------------------------------------|
| RENTABLE AREA: | 24,400 Sq. Ft. |
| WAREHOUSE: | 13,939 Sq. Ft. |
| OFFICE: | 3,774 Sq. Ft. |
| FREEZER/COOLER: | 6,687 Sq. Ft. |
| FREE MEZZANINE: | 8,227 Sq. Ft. |
| LOADING: | 2 Truck Wells 5 Grade Level Doors |
| POWER: | 3 Phase |
| CLEAR HEIGHT: | 12' to 25' |
| SPRINKLERED: | Yes |
| CONSTRUCTION: | Concrete Block/Masonry |
| LEASE RATE: | \$1.95 NNN |

***DISCLAIMERS:**

Lease must be fully executed by 6/30/12
5-Year Lease Term Minimum
Equates to \$0.98/NNN rental rate for initial 6-months of term

FOR MORE INFORMATION CONTACT:

Industrial Property Group, Inc.

Licensed Real Estate Broker

2202 N. Westshore Blvd. • Suite 200 • Tampa, FL 33607

LONNIE D. HOMENUK

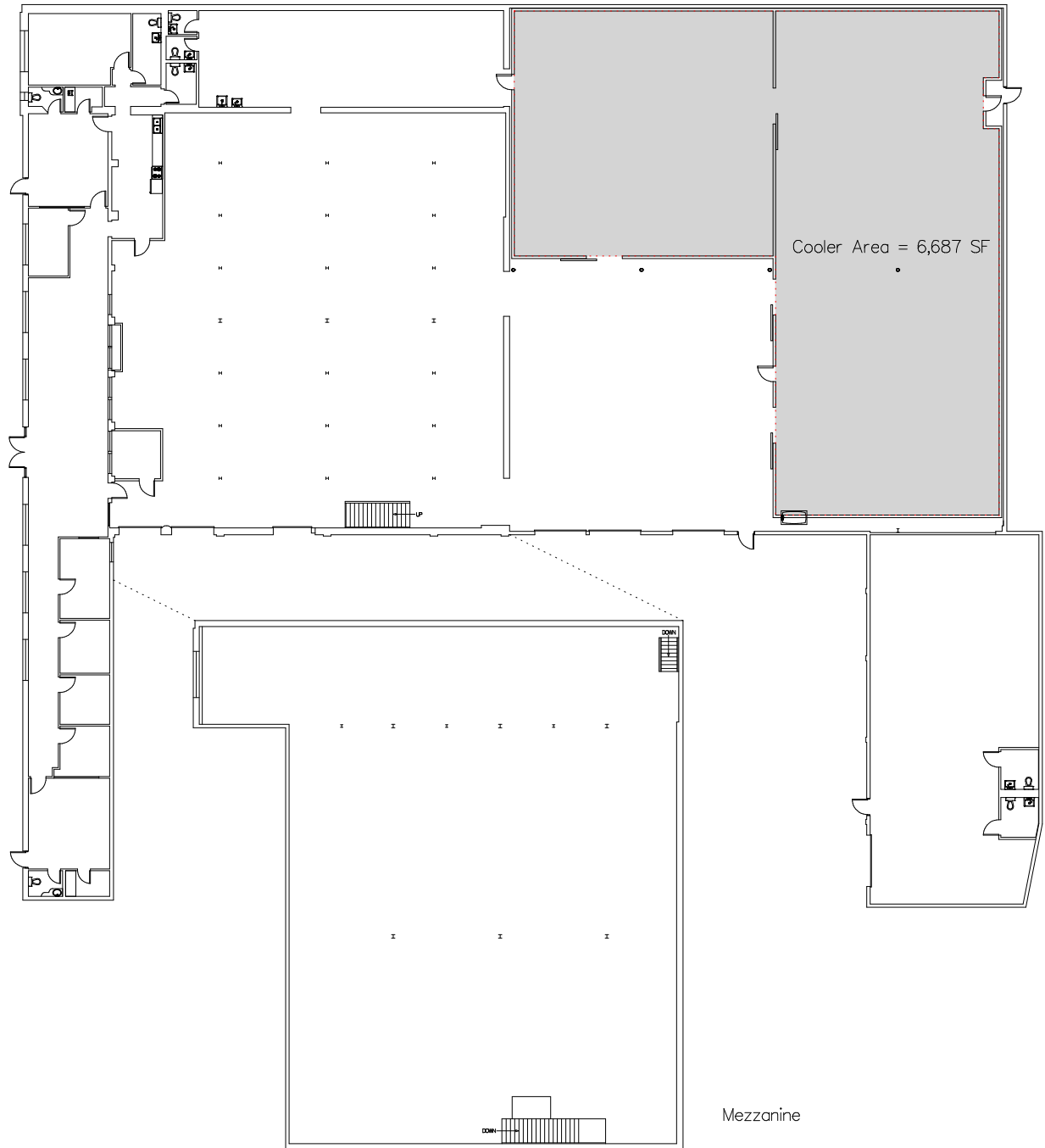
Cell: 813.220.9985
lonnie@capoindustrial.com
www.tampaindustrialrealestate.net

JEFF LAMM

Cell: 813.300.5266
jeff@capoindustrial.com

No warranty or representation, expressed or implied, is made as to the accuracy of the information contained herein, and same is submitted subject to errors, omissions, change of price, rental or other conditions, withdrawal without notice, and to any special listing conditions imposed by our principals.

1405 E. 2nd Avenue Tampa, FL 33605



FOR MORE INFORMATION CONTACT:

Industrial Property Group, Inc.

Licensed Real Estate Broker

2202 N. Westshore Blvd. • Suite 200 • Tampa, FL 33607

LONNIE D. HOMENUK

Cell: 813.220.9985

lonnie@capoindustrial.com

www.tampaindustrialrealestate.net

JEFF LAMM

Cell: 813.300.5266

jeff@capoindustrial.com

No warranty or representation, expressed or implied, is made as to the accuracy of the information contained herein, and same is submitted subject to errors, omissions, change of price, rental or other conditions, withdrawal without notice, and to any special listing conditions imposed by our principals.