

greenlawn,ny

247 broadway

prime retail space in active neighborhood strip center available | for lease



DEMOGRAPHICS	1 MILE	3 MILES	5 MILES
Population	12,064	88,306	188,672
Median HHI	\$100,810	\$110,399	\$122,441
Daytime Population	2,206	30,515	88,289

Available	1,100 square feet 1,232 square feet (pizzeria potentially available)
Asking Rent	Upon Request
GLA	9,000 square feet
Plot	1 acre
Co-Tenants	Angelina's Liquors, Mama Teresa's Pizzeria, U.S. Government (Armed Forces Recruiting Center), MetroOne Cell Phone Store
Area Retail	CVS, Gold's Gym, CrossFit, Stop & Shop, Rite Aid, Walgreens, Elements Massage, Starbucks, Pat's Marketplace, McDonald's, Dunkin' Donuts, Bethpage Federal Credit Union, and many more
Comments	<ul style="list-style-type: none">• active neighborhood strip center, anchored by 7-Eleven• busy corner with a traffic light• located on Broadway which sees over 12,000 vehicles per day

For More Information:

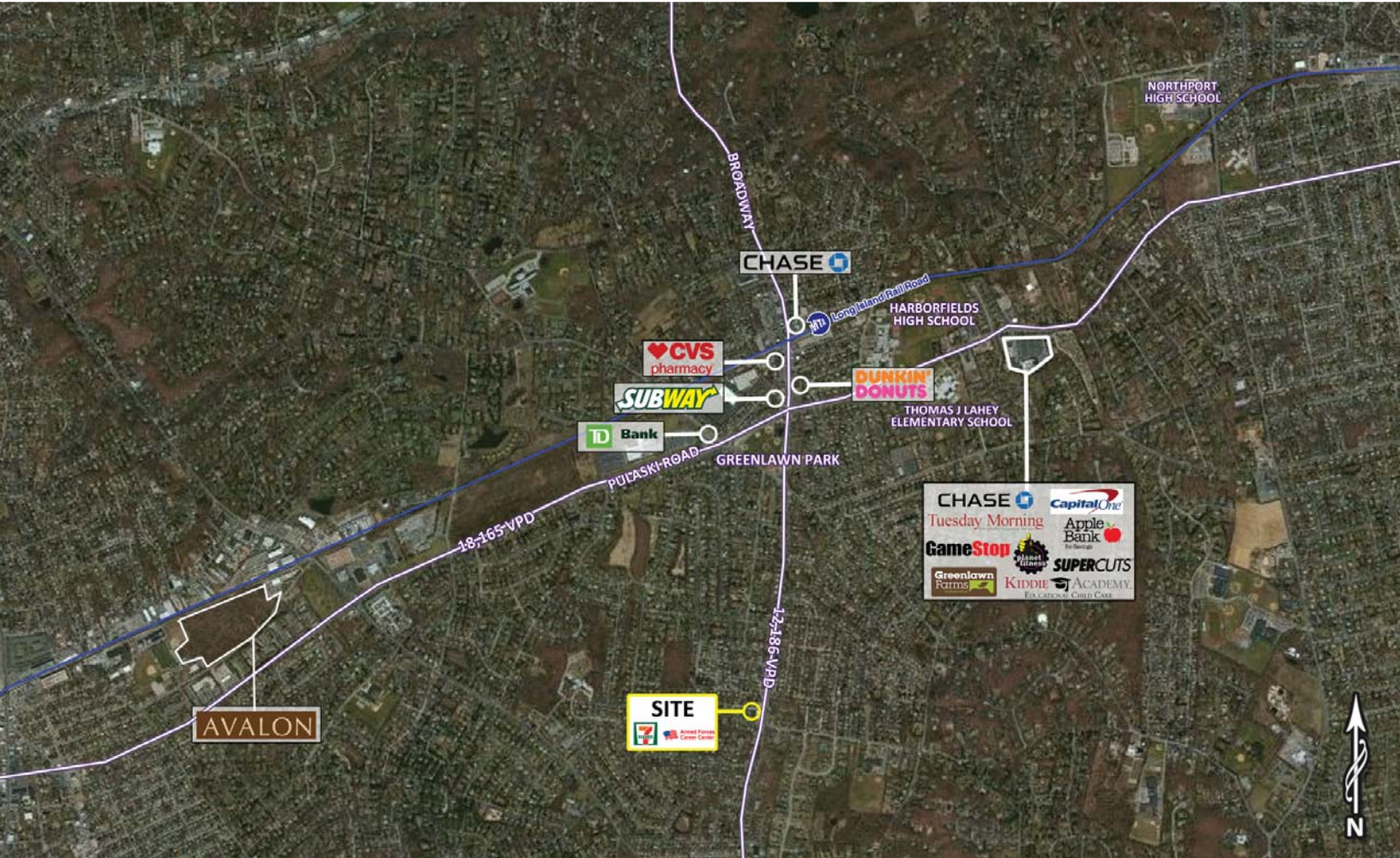
Stu Fagen | fagen@sabre.life | T 516 874 8070 x1503

sabre.life

SABRE

greenlawn,ny

247 broadway



For More Information:

Stu Fagen | fagen@sabre.life | T 516 874 8070 x1503

Sabre Real Estate Group, LLC

500 Old Country Road Garden City NY 11530

135 Madison Avenue 8th Floor New York NY 10016

500 Route 17 South Hasbrouck Heights NJ 07604

sabre.life

© Sabre Real Estate Group, LLC. This information has been obtained from sources believed reliable. We have not verified it and make no guarantee, warranty or representation about it. Any projections, opinions, assumptions or estimates used are for example only and do not represent the current or future performance of the property. You and your advisors should conduct a careful, independent investigation of the property to determine to your satisfaction the suitability of the property for your needs.

SABRE