

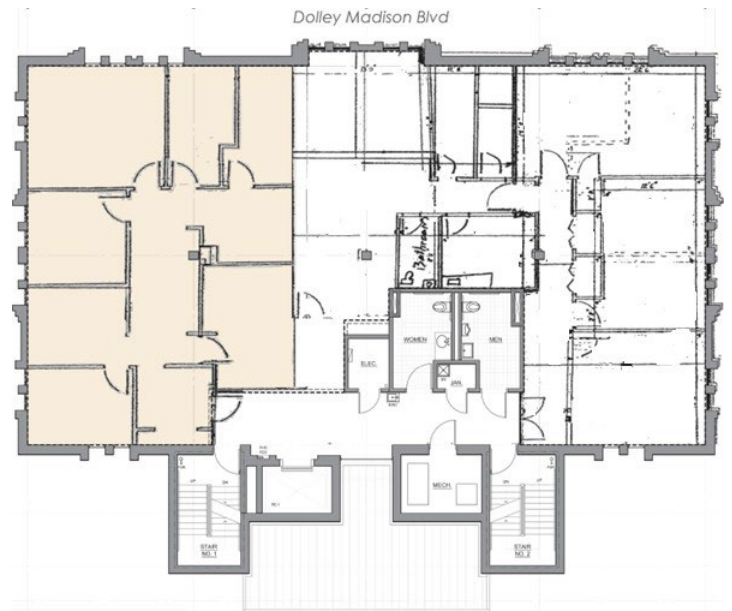
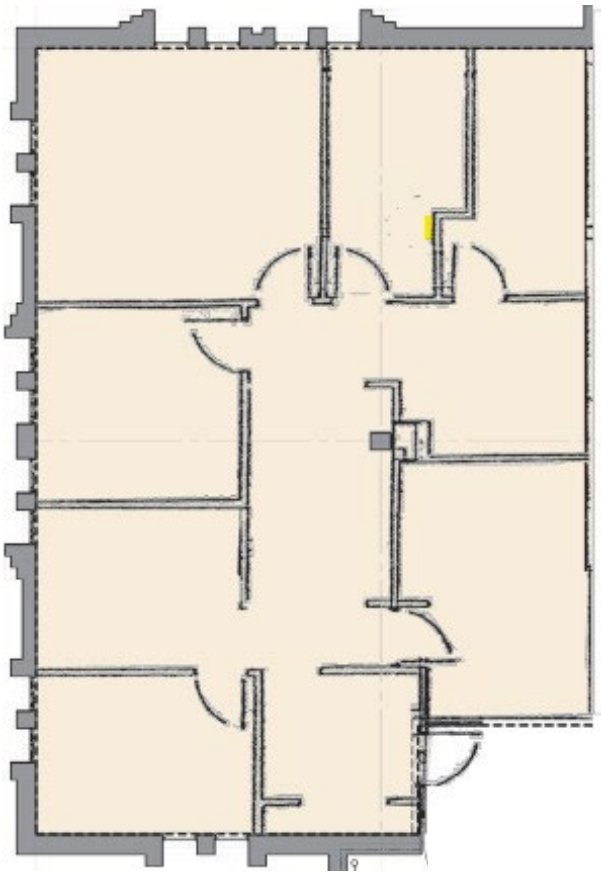
# Suite 3A

3<sup>rd</sup> Floor

1,670 RSF

Available: January 2024

Direct elevator access on the 3rd floor with 5 offices, open work area, pantry, conference room, and reception with storage.



**STOUT & TEAGUE**

1616 P St. NW | Suite B-100  
Washington, DC 20036

202-328-5136

Mollye Schneeberg, Director of Leasing

**[MSCHNEEBERG@STOUTANDTEAGUE.COM](mailto:MSCHNEEBERG@STOUTANDTEAGUE.COM)**