



For Lease

Property information

- Downtown Westfield location directly across from the train station
- Co-tenants include Kennedy's Barbershop, AR Workshop
- One block from new residential development
- Zoned for professional/medical uses as well as retail.
- Municipal parking lots and on street parking available

2,000 SF

**226 North Avenue
Westfield, NJ**

Craig Parcels
Associate
+1 973 829 4780
craig.parcels@am.jll.com

jll.com

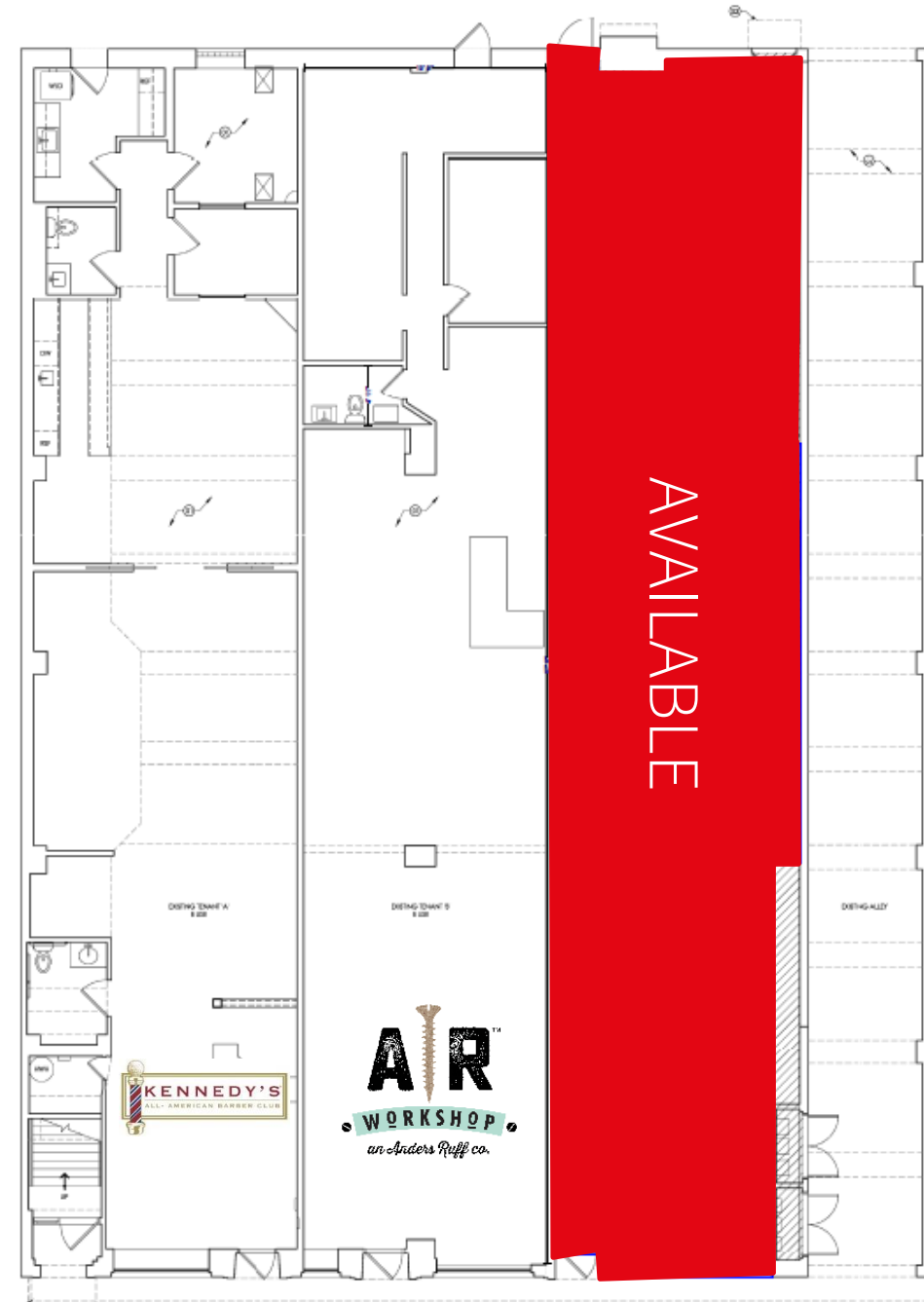
Asking rent

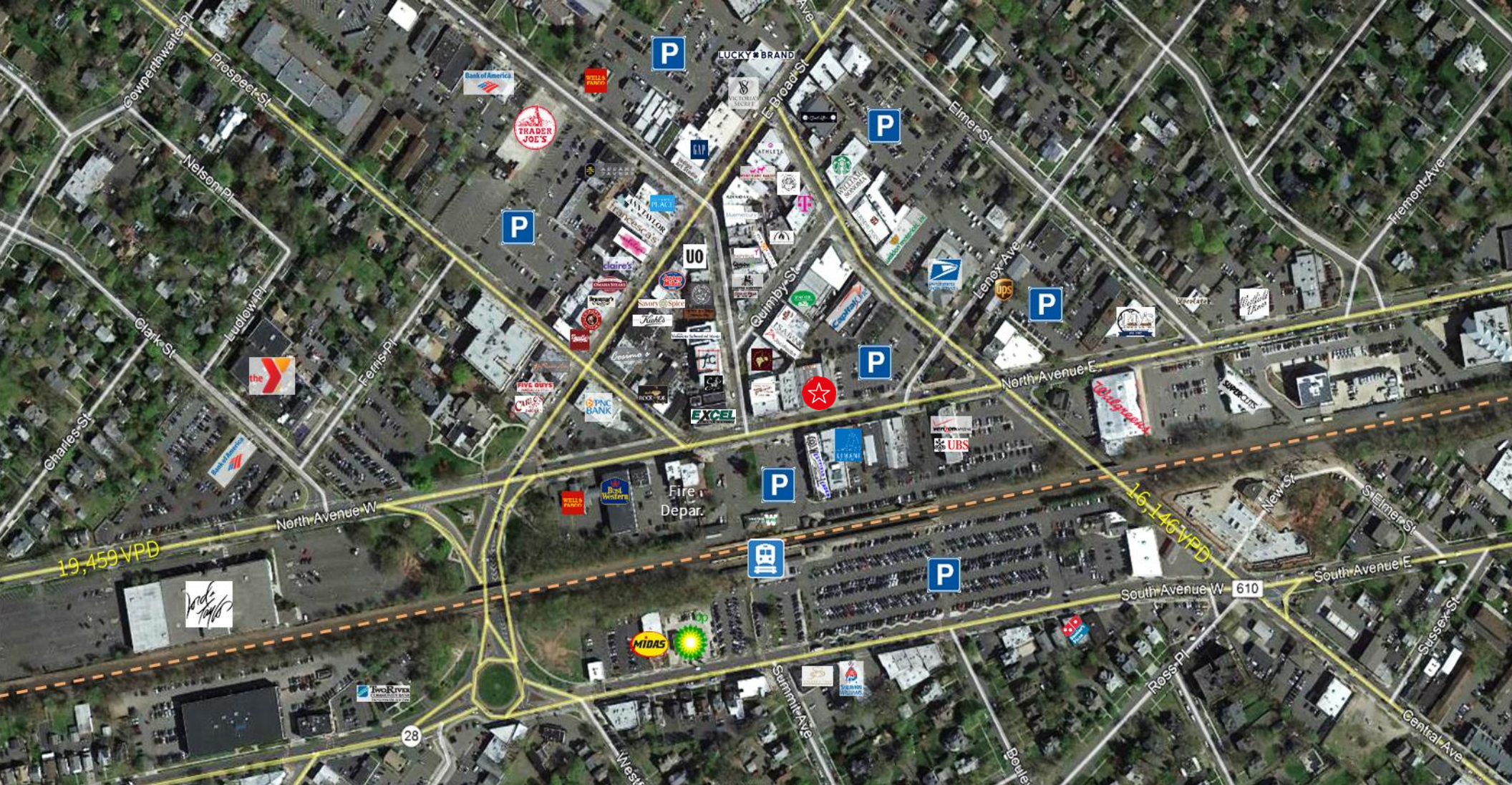
- Upon request

Traffic counts

- North Avenue W: 19,459 VPD
- Central Avenue: 16,146 VPD

Floor Plan





Demographics



Median Household Income



Employees



Number of Businesses

1-mile	18,668	\$148,768	14,213	1,112
2-mile	57,644	\$130,425	23,653	1,970
3-mile	109,941	\$119,308	53,048	4,663

