

FOR LEASE

810 H Street NE Washington, DC



EXCLUSIVE ADVISORS:

STEVE SOLOMON
202.441.3360
steve@solomonreal.com

ERIK ULSAKER
703.861.0373
EU@Inf.com



810 H Street NE Washington, DC

First & Second Floor Can Be Leased Separately



PROPERTY HIGHLIGHTS:



SIZE	1,900 SF (1st Floor) 600 SF (2nd Floor)
TRAFFIC	18,209 VPD
ZONING	NC-16
WALK SCORE	96 (Very Walkable)
CEILING HEIGHT	+/- 18'
LEASE RATE	\$45 PSF NNN (1st Floor) \$40 PSF (2nd Floor)

<u>WALK TIME</u>	<u>1 MIN:</u>	<u>5 MIN:</u>	<u>10 MIN:</u>
TOTAL EMPLOYEES:	581	2,168	6,325
TOTAL BUSINESSES:	59	193	512
AVG HH INCOME:	\$106,748	\$117,754	\$111,951
HOUSEHOLDS:	2,441	8,085	14,353



EXCLUSIVE ADVISORS:

STEVE SOLOMON
202.441.3360
steve@solomonreal.com

ERIK ULSAKER
703.861.0373
EU@lnf.com

LONG & FOSTER
COMMERCIAL DIVISION

LOCATION SUMMARY

810 H Street represents an opportunity to lease approximately 1,900 SF of storefront retail space & 600 SF of second floor office space along the H Street Corridor. This property is surrounded by plenty of amenities which include restaurants, shopping, entertainment and more. Along with the daily foot traffic on H Street, there are multiple new apartment complexes nearby (AVEC), making this a growing and sought after neighborhood in Northeast, DC.



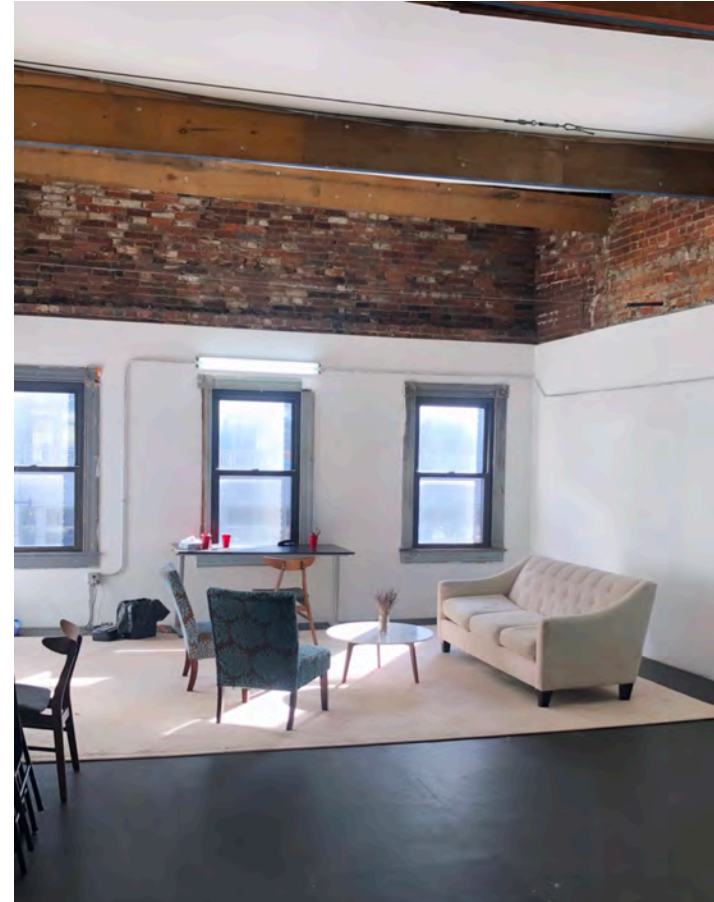
EXCLUSIVE ADVISORS:

STEVE SOLOMON
202.441.3360
steve@solomonreal.com

ERIK ULSAKER
703.861.0373
EU@Inf.com



1,900 SF (First Floor)



600 SF (Second Floor)

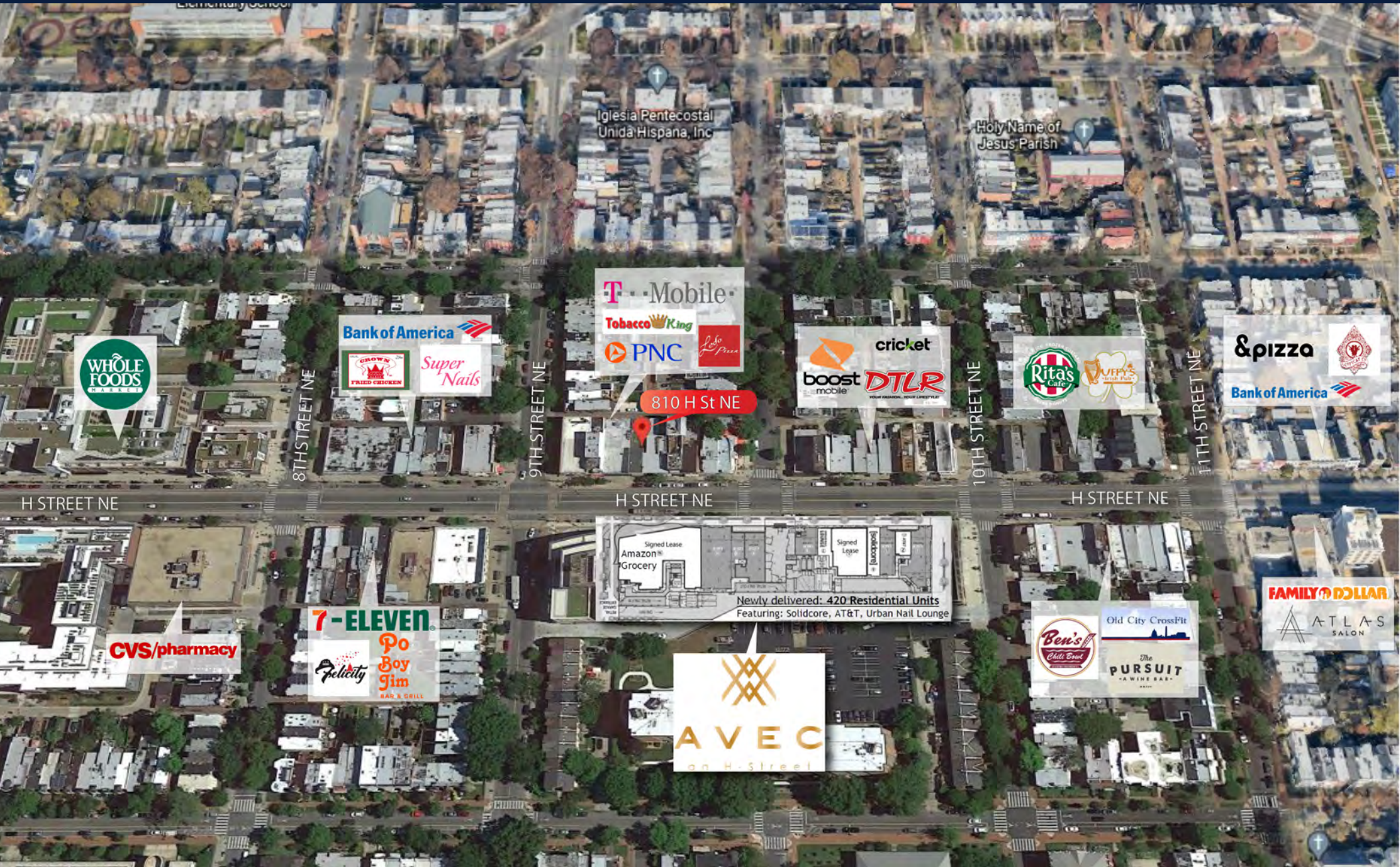


EXCLUSIVE ADVISORS:

STEVE SOLOMON
202.441.3360
steve@solomonreal.com

ERIK ULSAKER
703.861.0373
EU@lnf.com

LONG & FOSTER
COMMERCIAL DIVISION



EXCLUSIVE ADVISORS:

STEVE SOLOMON
 202.441.3360
 steve@solomonreal.com

ERIK ULSAKER
 703.861.0373
 EU@lnf.com

LONG & FOSTER
 COMMERCIAL DIVISION