



Dolphin Commerce Center
11200 NW 25th Street, Doral, FL

Owned by:



Suite 101 Available

- 29,056 sf
- \$10.95/sf industrial gross
- 25th Street frontage / prominent signage

FOR LEASE



Location



Site Info



Floor Plan



Contact



Next

Thomas Viscount

Principal

954.903.1810

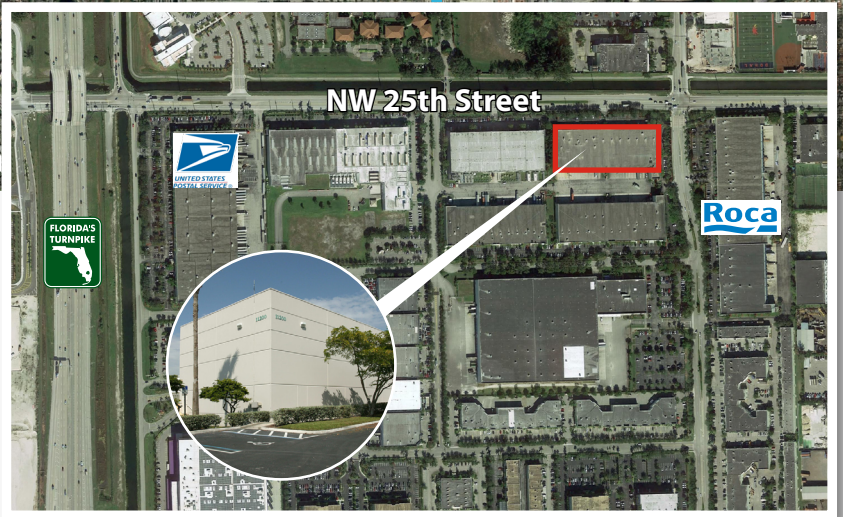
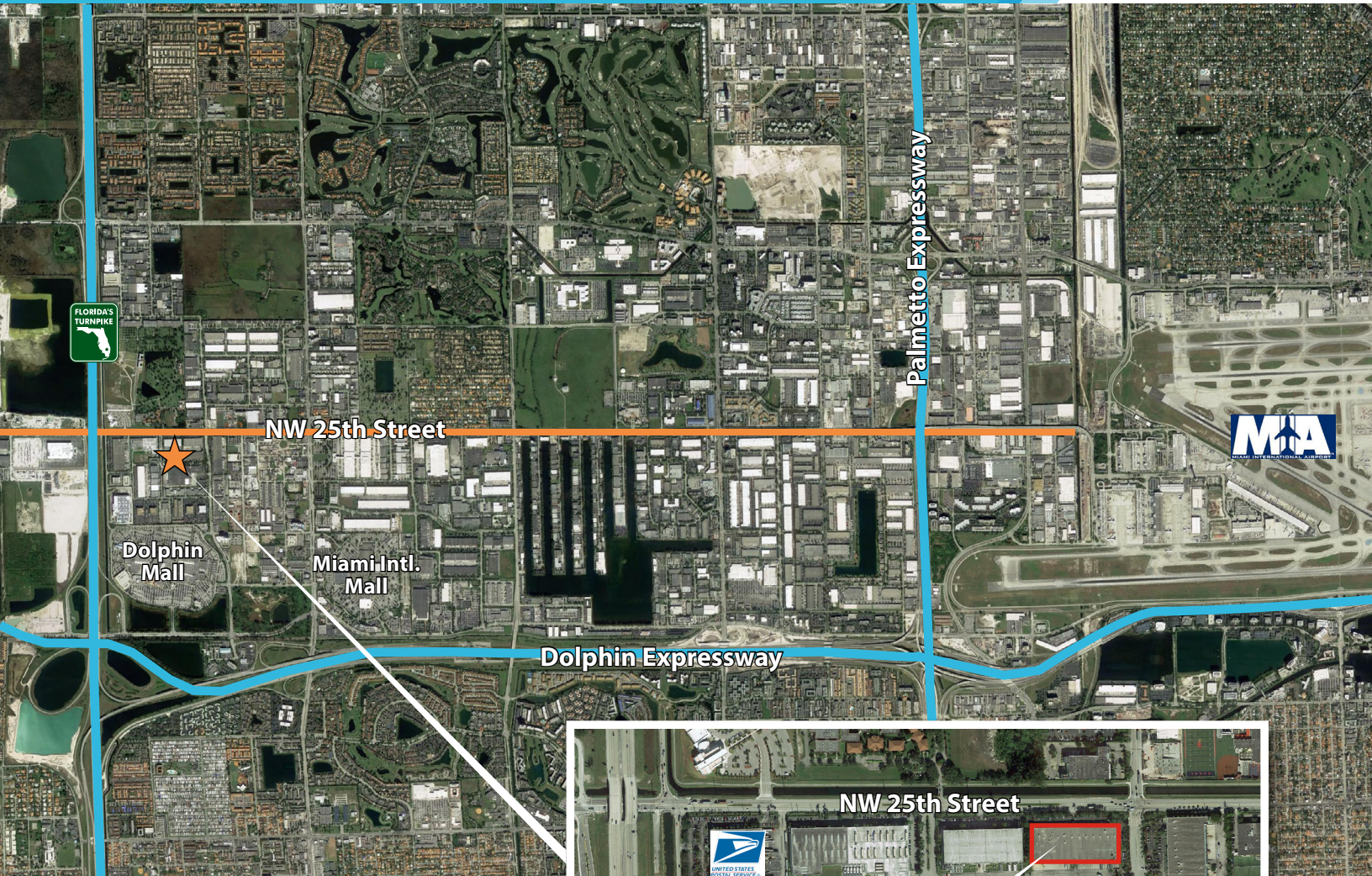
tom.viscount@avisonyoung.com



Dolphin Commerce Center

11200 NW 25th Street, Doral, FL

Owned by:



Prime Location

- Doral/Miami
- 0.5 mile to Florida's Turnpike
- 1.5 miles to Dolphin Expressway
- 3.5 miles to Palmetto Expressway
- Convenient access to Miami International Airport (4 miles) and Port of Miami (15 miles)



Home



Location



Site Info



Floor Plan



Contact



Previous



Next

Thomas Viscount

Principal

954.903.1810

tom.viscount@avisonyoung.com



Dolphin Commerce Center

11200 NW 25th Street, Doral, FL

Owned by:



Home



Location



Site Info



Floor Plan



Contact



Previous



Next

Thomas Viscount

Principal

954.903.1810

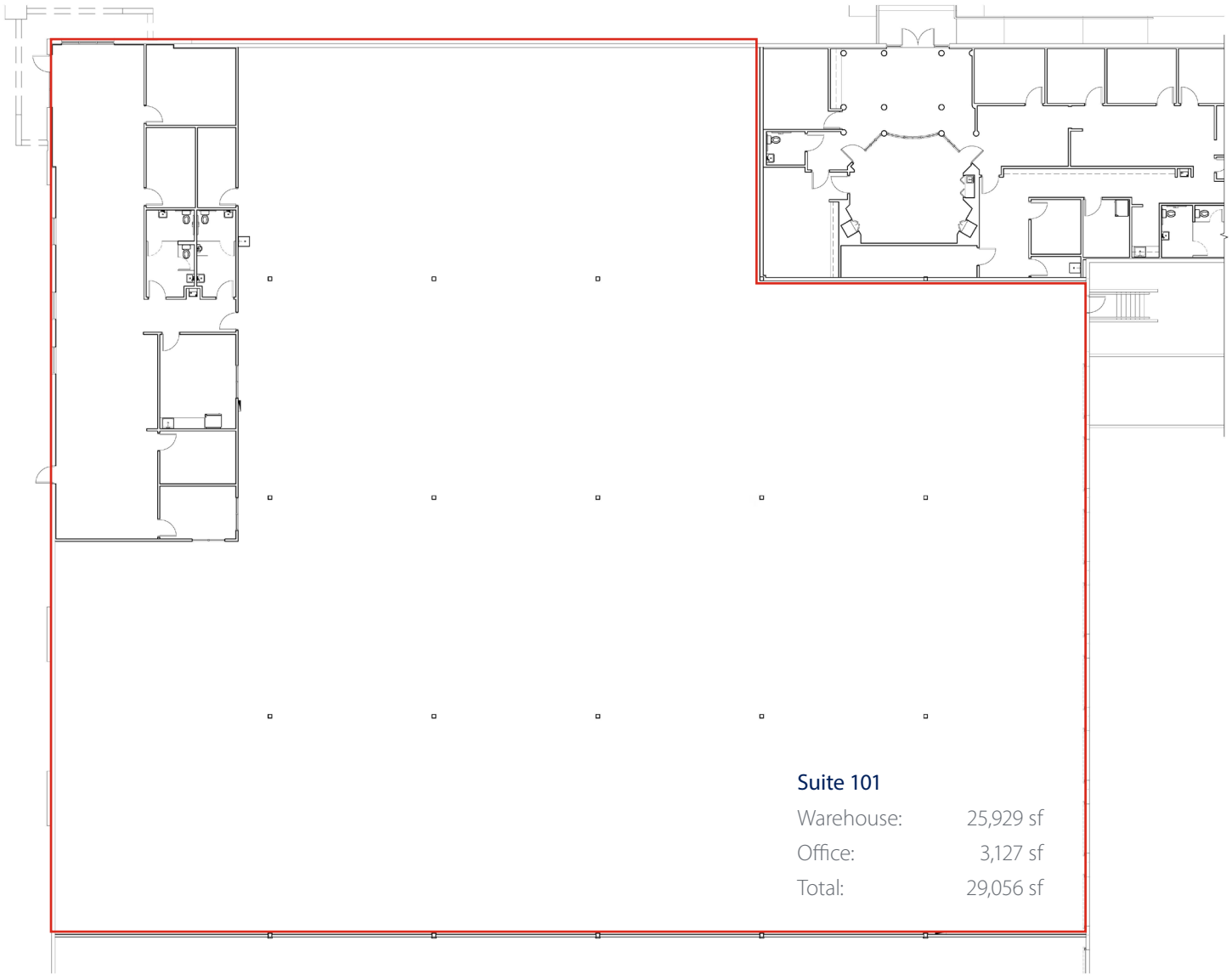
tom.viscount@avisonyoung.com



Dolphin Commerce Center

11200 NW 25th Street, Doral, FL

Owned by:



Home



Location



Site Info



Floor Plan



Contact



Previous

Thomas Viscount

Principal

954.903.1810

tom.viscount@avisonyoung.com