

MIDTOWN

NEW YORK
NY

285 MADISON AVENUE



SPACE DETAILS

LOCATION

East block between East 40th and 41st Streets

APPROXIMATE SIZE

Ground Floor	1,679 SF
Mezzanine	500 SF
Total	2,179 SF

CEILING HEIGHT

Ground Floor	20 FT
--------------	-------

TERM

Negotiable

POSSESSION

Second Quarter 2020

SITE STATUS

Currently Dr Smood

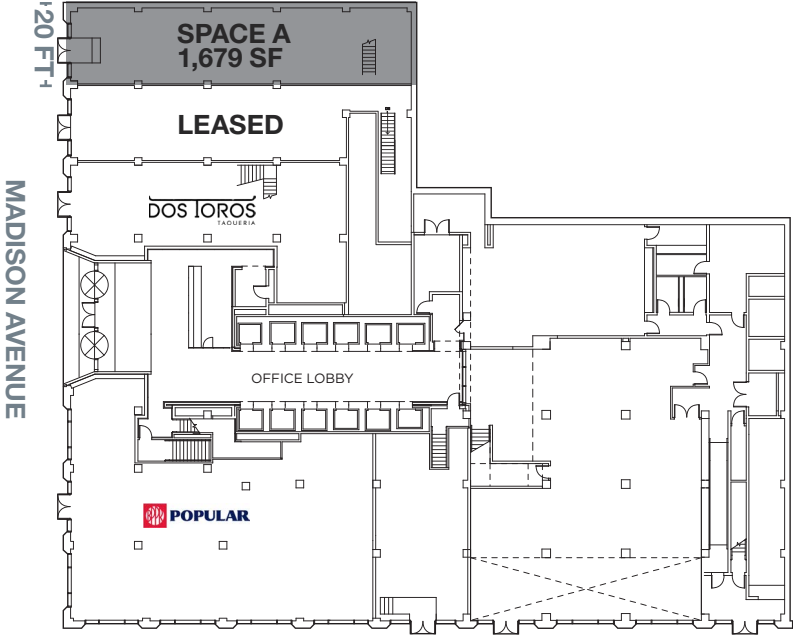
NEIGHBORS

Zara, Sephora, Chipotle Mexican Grill, Zuma, Pret A Manger, Starbucks, Joe & The Juice and CVS pharmacy

COMMENTS

- Features new glass façade
- Highly visible
- Surrounded by dense office population with over one million employees in the area
- Pedestrian count averages over 5,000 per hour
- Steps from Grand Central Station bustling 750,000 commuters per day

GROUND FLOOR



MEZZANINE

