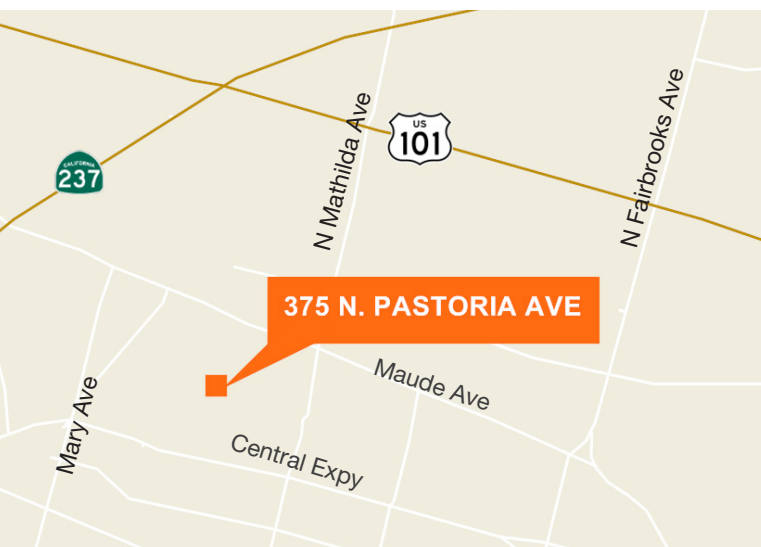


SUNNYVALE LAND FOR SALE

375 North Pastoria Avenue
Sunnyvale, CA



±1 ACRE SITE FOR DEVELOPMENT

Located in the heart of Sunnyvale's Peery Park

Easement access TBD upon Buyer's needs

Approximately 1.4 miles to Downtown Sunnyvale & CalTrain

Neighboring tenants include Apple, LinkedIn and Mercedes

Site uses include parking or energy farm

CONTACT

Craig Leiker

408.588.2310

cleiker@kiddermathews.com

Lic #00783535

Justin Hedberg

408.588.2317

jhedberg@kiddermathews.com

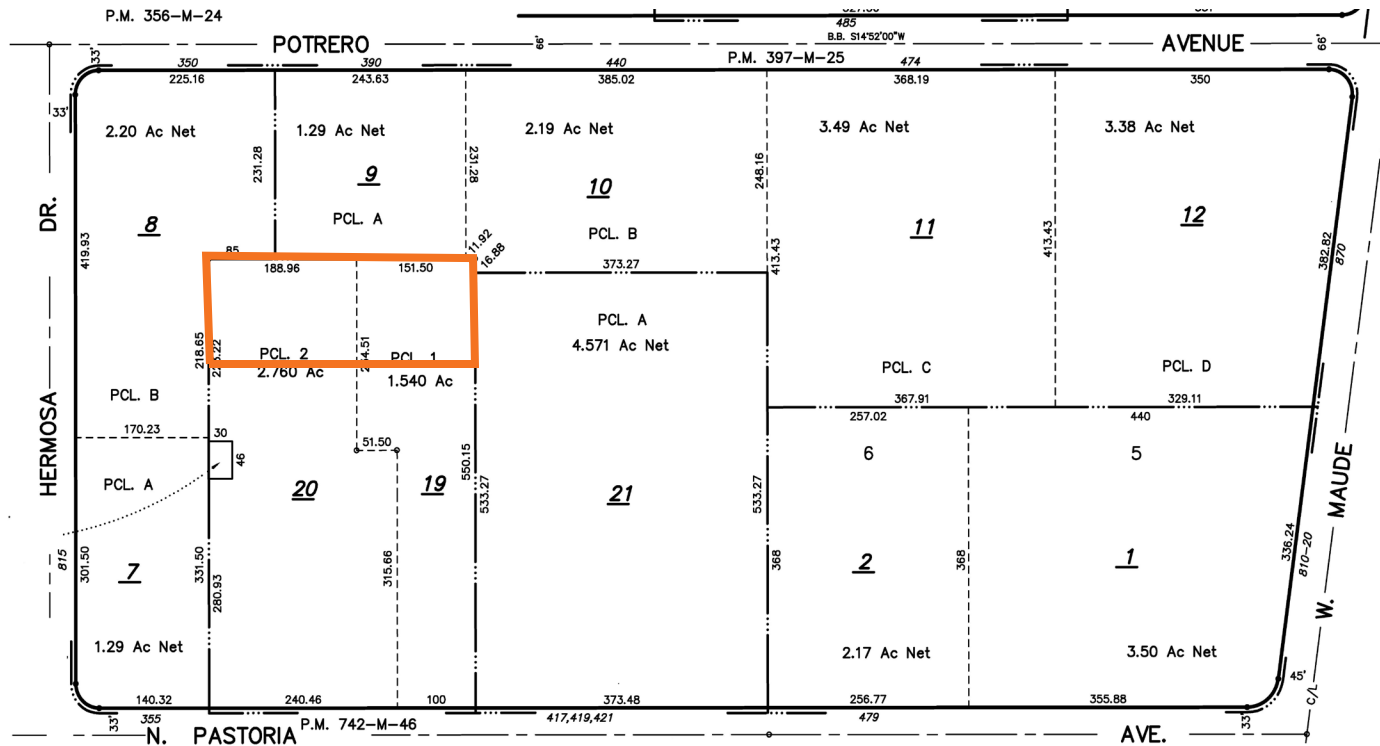
Lic #01480759



FOR SALE

±1 Acre Site for Sale

SITE PLAN



CONTACT

Craig Leiker
 408.588.2310
 cleiker@kiddermathews.com
 Lic #00783535

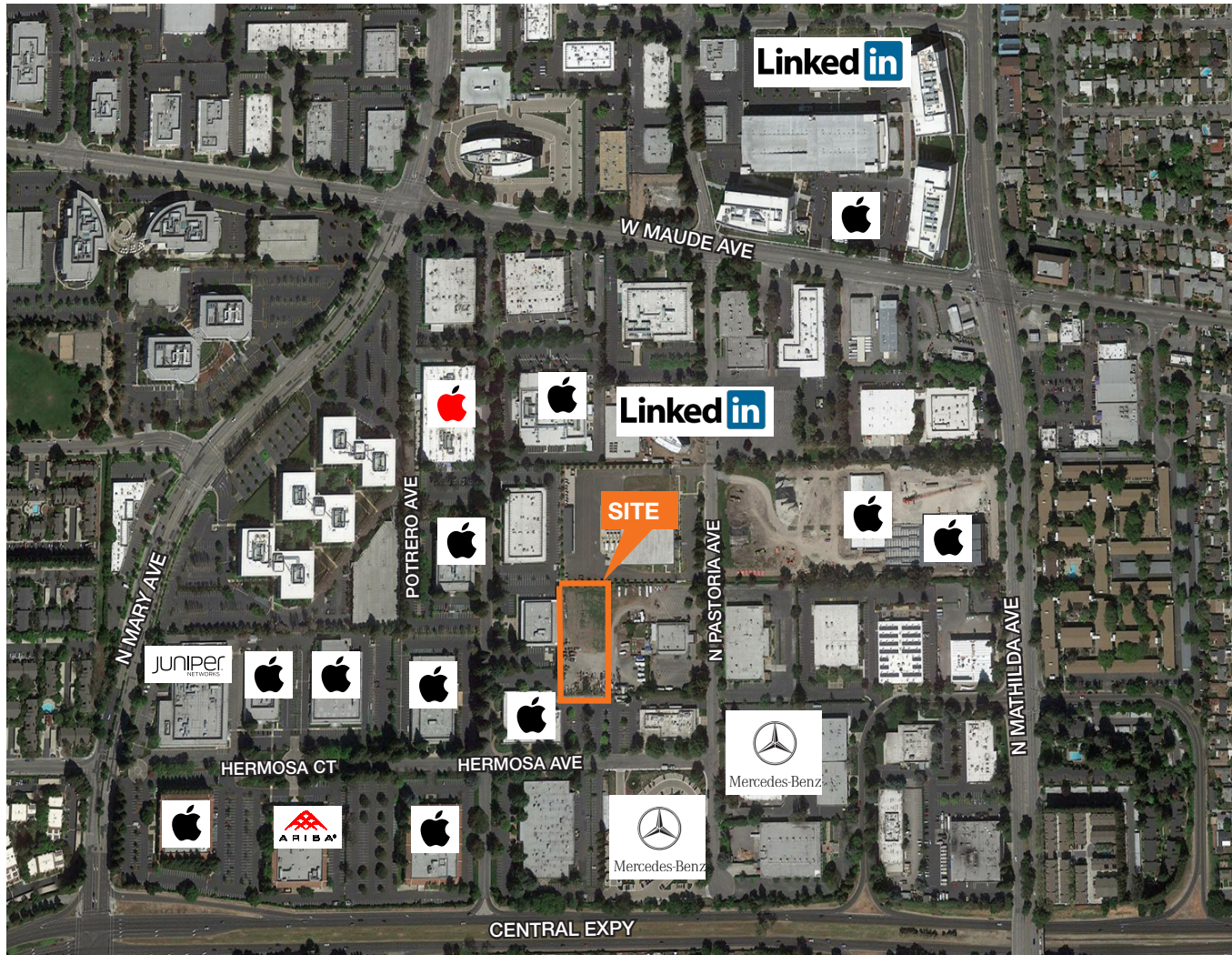
Justin Hedberg
 408.588.2317
 jhedberg@kiddermathews.com
 Lic #01480759



FOR SALE

±1 Acre Site for Sale

NEIGHBORING TENANTS



CONTACT

Craig Leiker
408.588.2310
cleiker@kiddermathews.com
Lic #00783535

Justin Hedberg
408.588.2317
jhedberg@kiddermathews.com
Lic #01480759



FOR SALE

±1 Acre Site for Sale

DEMOGRAPHICS

375 N Pastoria Ave Sunnyvale, CA		1 Mile	3 Miles	5 Miles
POPULATION	2015 Estimated Population	22,612	183,989	408,409
	2020 Projected Population	24,802	200,979	446,682
	2010 Census Population	20,683	166,652	374,984
	2000 Census Population	20,204	156,783	346,839
	Projected Annual Growth 2015 to 2020	1.9%	1.8%	1.9%
	Historical Annual Growth 2000 to 2015	0.8%	1.2%	1.2%
	2015 Median Age	33.9	36	37.2
HOUSEHOLDS	2015 Estimated Households	8,693	71,188	153,503
	2020 Projected Households	9,279	75,808	163,737
	2010 Census Households	8,167	66,214	144,268
	2000 Census Households	8,085	64,814	137,486
	Projected Annual Growth 2015 to 2020	1.3%	1.3%	1.3%
	Historical Annual Growth 2000 to 2015	0.5%	0.7%	0.8%
RACE AND ETHNICITY	2015 Estimated White	42.4%	42.6%	43.0%
	2015 Estimated Black or African American	2.4%	2.5%	2.3%
	2015 Estimated Asian or Pacific Islander	37.5%	40.9%	42.5%
	2015 Estimated American Indian or Native Alaskan	0.6%	0.5%	0.4%
	2015 Estimated Other Races	17.2%	13.6%	11.9%
	2015 Estimated Hispanic	29.2%	19.9%	16.7%
INCOME	2015 Estimated Average Household Income	\$112,187	\$125,546	\$136,026
	2015 Estimated Median Household Income	\$101,198	\$109,079	\$115,855
	2015 Estimated Per Capita Income	\$43,178	\$48,616	\$51,163
EDUCATION (AGE 26+)	2015 Estimated Elementary (Grade Level 0 to 8)	7.5%	4.8%	4.0%
	2015 Estimated Some High School (Grade Level 9 to 11)	4.2%	4.0%	3.4%
	2015 Estimated High School Graduate	12.4%	11.5%	10.9%
	2015 Estimated Some College	14.6%	14.0%	13.3%
	2015 Estimated Associates Degree Only	6.1%	5.8%	6.0%
	2015 Estimated Bachelors Degree Only	27.3%	29.5%	30.2%
	2015 Estimated Graduate Degree	27.8%	30.4%	32.2%
BUSINESS	2015 Estimated Total Businesses	811	7,077	17,477
	2015 Estimated Total Employees	13,484	98,979	265,004
	2015 Estimated Employee Population per Business	16.6	14.0	15.2
	2015 Estimated Residential Population per Business	27.9	26.0	23.4

CONTACT

Craig Leiker
408.588.2310
cleiker@kiddermathews.com
Lic #00783535

Justin Hedberg
408.588.2317
jhedberg@kiddermathews.com
Lic #01480759

