

STONE REAL ESTATE

70 EAST LAKE



1,037
Square feet
available



31K
Population in
half-mile radius



80'
Frontage on
Garland



42K
Daytime population in a
two block radius



\$105K
Avg HH Income in a
two block radius



27.2K
Pedestrians walk the
intersection daily of
Michigan and Lake

Retail Space Steps from Michigan Avenue



PROPERTY

Space available in a vintage 17-story building in the heart of Chicago's East Loop. One block west of Michigan Avenue and conveniently positioned amidst a 24/7 audience of office workers, residents and tourists. This pocket of the East Loop is surrounded by numerous hotels, steps from three new, luxury high rise residential developments containing a total of 924 units and offers exposure to daytime and evening pedestrians.

AVAILABLE SPACE

■ 1,037 square feet with 14' wide sidewalk that offers a potential for significant outdoor seating.

PUBLIC TRANSPORTATION

Building is easily accessible by Red, Brown, Purple, Orange, Green and Pink CTA subway lines, the Metra South Shore line and numerous Michigan Avenue and Lake Street bus lines.

AREA RETAIL TENANTS AND ATTRACTIONS



	1/2 MILE	1 MILE	2 MILE
POPULATION	24,368	91,154	192,169
AVERAGE HH INCOME	\$167,456	\$156,779	\$148,027
DAYTIME POPULATION	244,065	551,800	653,053

EXCLUSIVE AGENTS

Megan Giroux 312/782-1374
mgiroux@stonerealestate.com

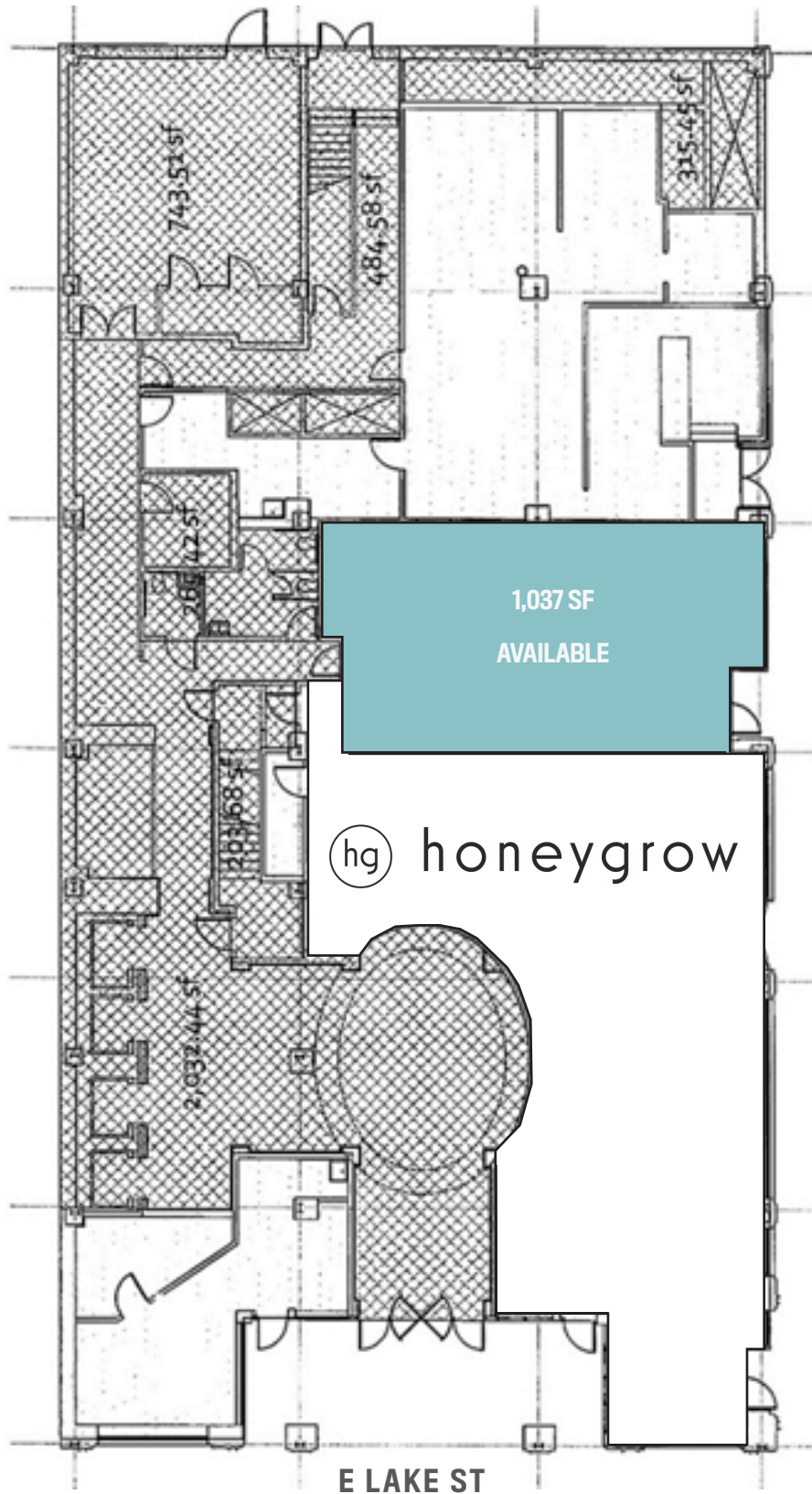
David Stone 312/372-2657
dstone@stonerealestate.com

OFFICE LEASING AND MANAGED BY

Ansonia Property
Management

STONE | 20
REAL ESTATE | YEARS

STONE REAL ESTATE
70 EAST LAKE



EXCLUSIVE AGENTS

Megan Giroux 312/782-1374
mgiroux@stonerealestate.com

David Stone 312/372-2657
dstone@stonerealestate.com

OFFICE LEASING AND MANAGED BY

Ansonia Property
Management

STONE | 20
REAL ESTATE YEARS