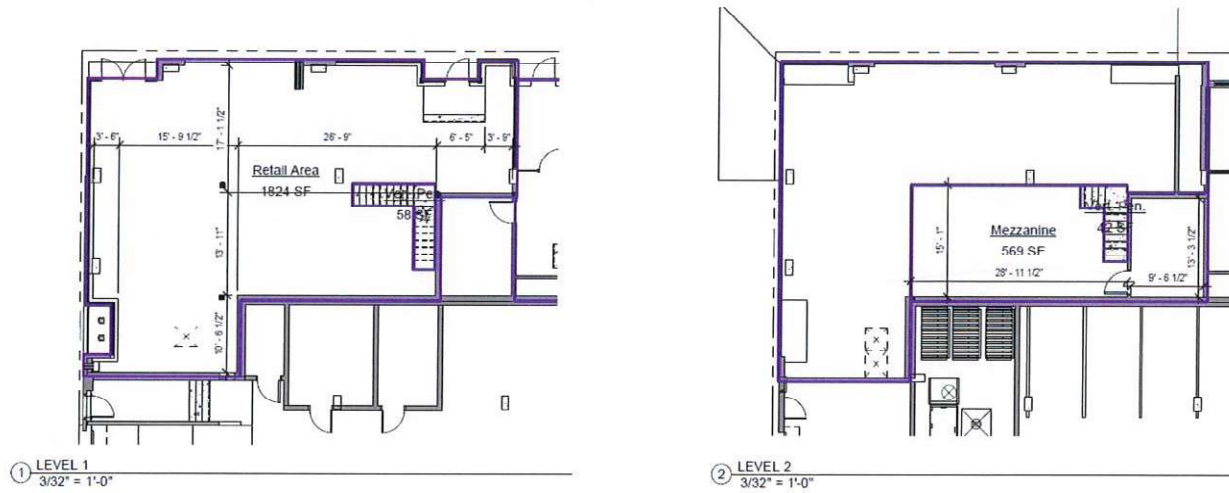


EXHIBIT A
OUTLINE OF THE PREMISES





Tenant Initials



Landlord Initials

EXHIBIT B

LEGAL DESCRIPTION OF THE PROPERTY



Legal Description of the Property

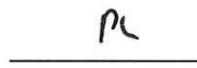
LOTS 13 AND 14, BLOCK 6, SUPPLEMENTARY PLAT OF UNION ADDITION TO THE CITY OF SEATTLE, ACCORDING TO THE PLAT THEREOF, RECORDED IN VOLUME 9 OF PLATS, PAGE 12, IN KING COUNTY, WASHINGTON;

EXCEPT THE NORTH 10 FEET OF SAID LOT 14 CONDEMNED IN KING COUNTY SUPERIOR COURT CAUSE NO. 61303 FOR STREET PURPOSES, AS PROVIDED BY ORDINANCE NO. 16415 OF THE CITY OF SEATTLE.

SITUATE IN THE CITY OF SEATTLE, COUNTY OF KING, STATE OF WASHINGTON.



Tenant Initials



Landlord Initials