



# FOR LEASE

4505 Stephens Circle NW  
Canton, Ohio 44718

## PREMIER BELDEN VILLAGE LOCATION



### Property Specifications

TOTAL BUILDING SF	32,840 SF
TOTAL OFFICE SF AVAILABLE	7,912 SF
LAND	2.12 acres
CONSTRUCTED	2000
PARKING	163 spaces (5 spaces per 1,000 SF)



**Lease Rate: \$16.50 / SF Gross  
Plus in-suite Cleaning**

**Eric M. Schreibman**  
Vice President  
216.525.1471  
eschreibman@crescorealestate.com

**Rico A. Pietro, SIOR**  
Principal  
216.525.1473  
rpietro@crescorealestate.com

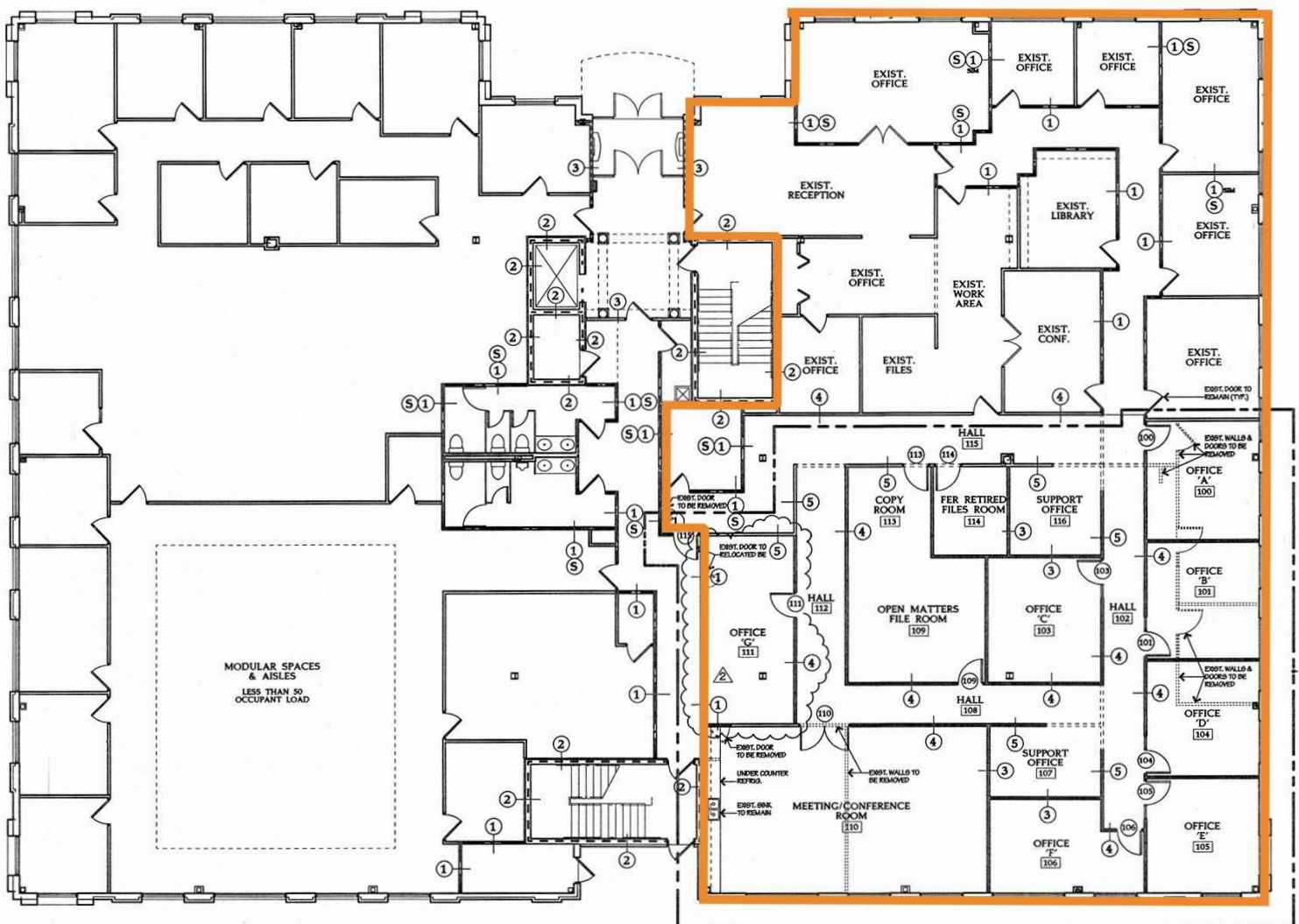
3 Summit Park Drive  
Suite 200  
Cleveland, Ohio 44131  
Main 216.520.1200  
Fax 216.520.1828  
**crescorealestate.com**

*Independently Owned and Operated / A Member of the Cushman & Wakefield Alliance*

Cushman & Wakefield Copyright 2015. No warranty or representation, express or implied, is made to the accuracy or completeness of the information contained herein, and same is submitted subject to errors, omissions, change of price, rental or other conditions, withdrawal without notice, and to any special listing conditions imposed by the property owner(s). As applicable, we make no representation as to the condition of the property (or properties) in question.

## First Floor

- Suite 101 : 7,912 SF
- Potentially Divisible
- Quality Finishes throughout
- Building owned and managed by local, professional management team



**Eric M. Schreibman**  
Vice President  
216.525.1471  
eschreibman@crescorealestate.com

**Rico A. Pietro, SIOR**  
Principal  
216.525.1473  
rpietro@crescorealestate.com

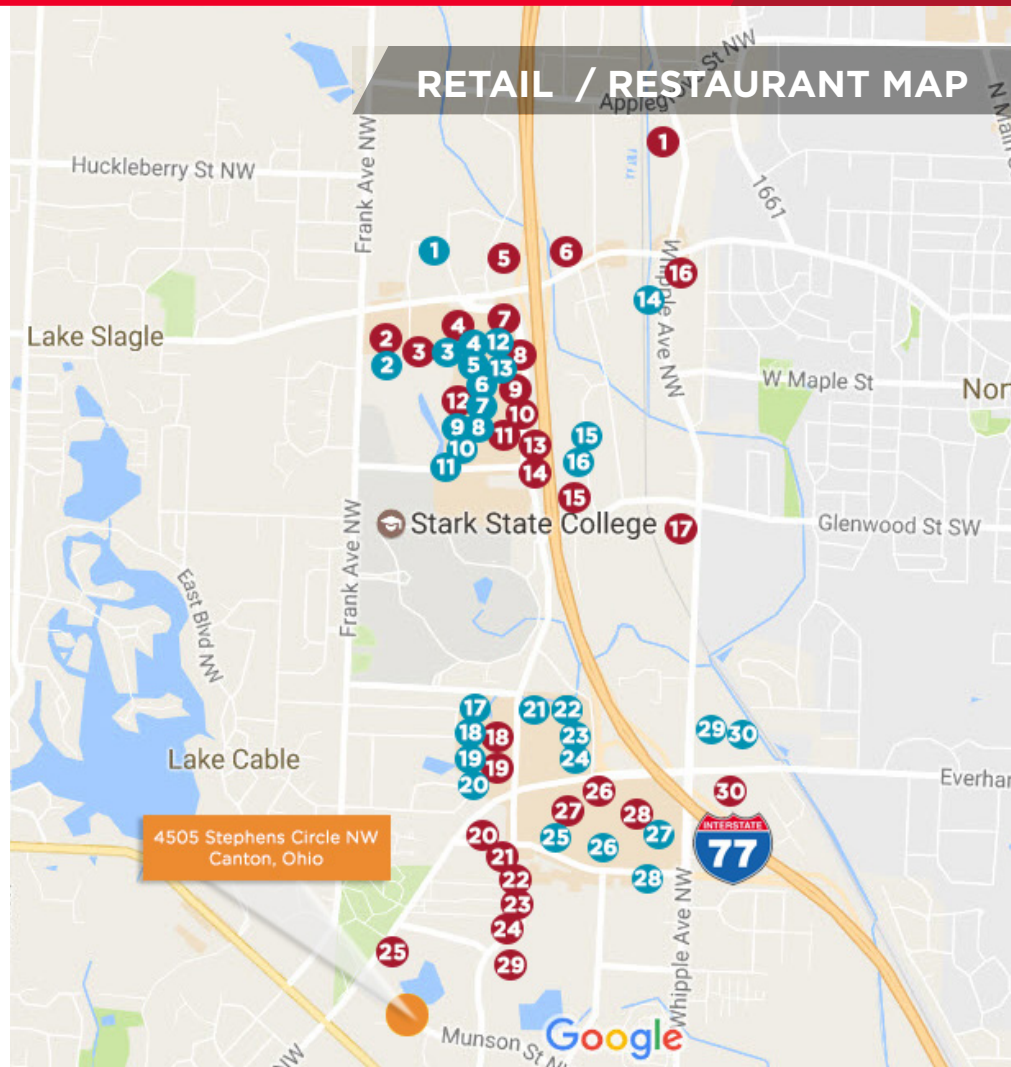
3 Summit Park Drive  
Suite 200  
Cleveland, Ohio 44131  
Main 216.520.1200  
Fax 216.520.1828  
**crescorealestate.com**

## Retail

1. The Home Depot
2. Gander Mountain
3. Sam's Club
4. Book-A-Million
5. Bed Bath & Beyond
6. Old Navy
7. OfficeMax
8. Best Buy
9. Marshalls
10. Giant Eagle Supermarket
11. Lowe's Home Improvement
12. AT&T
13. Men's Wearhouse
14. Ohio Pools & Spas
15. Lumber Liquidators, Inc.
16. Levin Furniture
17. World Market
18. Arhaus
19. Jo-Ann Fabrics and Crafts
20. PetSmart
21. Target
22. DICK'S Sporting Goods
23. DSW Designer Shoe Warehouse
24. Kohl's Canton
25. Dillard's
26. Macy's
27. Sears
28. Fin Feather Fur Outfitters - Canton
29. Hhgregg
30. Earth Fare North Canton

## Restaurant

- |   |  |   |
|---|--|---|
| <ol style="list-style-type: none"> <li>1. Scenic Brewing Co.</li> <li>2. Rockne's N. Canton</li> <li>3. Smoke the Burger Joint</li> <li>4. IHOP</li> <li>5. Cracker Barrel Old Country Store</li> <li>6. Geisen Haus</li> <li>7. Starbucks</li> <li>8. Aladdin's Eatery</li> <li>9. LongHorn Steakhouse</li> <li>10. Carrabba's Italian Grill</li> <li>11. BJ's Restaurant &amp; Brewhouse</li> <li>12. Panera Bread</li> </ol> | <ol style="list-style-type: none"> <li>13. Outback Steakhouse</li> <li>14. Bonefish Grill</li> <li>15. Quaker Steak &amp; Lube</li> <li>16. Palombo's Italian Restaurant</li> <li>17. Table Six Kitchen + Bar</li> <li>18. Ruby Tuesday</li> <li>19. Bob Evans</li> <li>20. Red Lobster</li> <li>21. Chipotle Mexican Grill</li> </ol> | <ol style="list-style-type: none"> <li>22. Titled Kilt Pub and Eatery</li> <li>23. Texas Roadhouse</li> <li>24. Applebee's</li> <li>25. Perkins Restaurant &amp; Bakery</li> <li>26. BRAVO Cucina Italiana</li> <li>27. The Rail - Canton</li> <li>28. Chili's Grill &amp; Bar</li> <li>29. Olive Garden</li> <li>30. Fazoli's</li> </ol> |
|---|--|---|



**Eric M. Schreibman**  
Vice President  
216.525.1471  
eschreibman@crescorealestate.com

**Rico A. Pietro, SIOR**  
Principal  
216.525.1473  
rpietro@crescorealestate.com

3 Summit Park Drive  
Suite 200  
Cleveland, Ohio 44131  
Main 216.520.1200  
Fax 216.520.1828  
**crescorealestate.com**