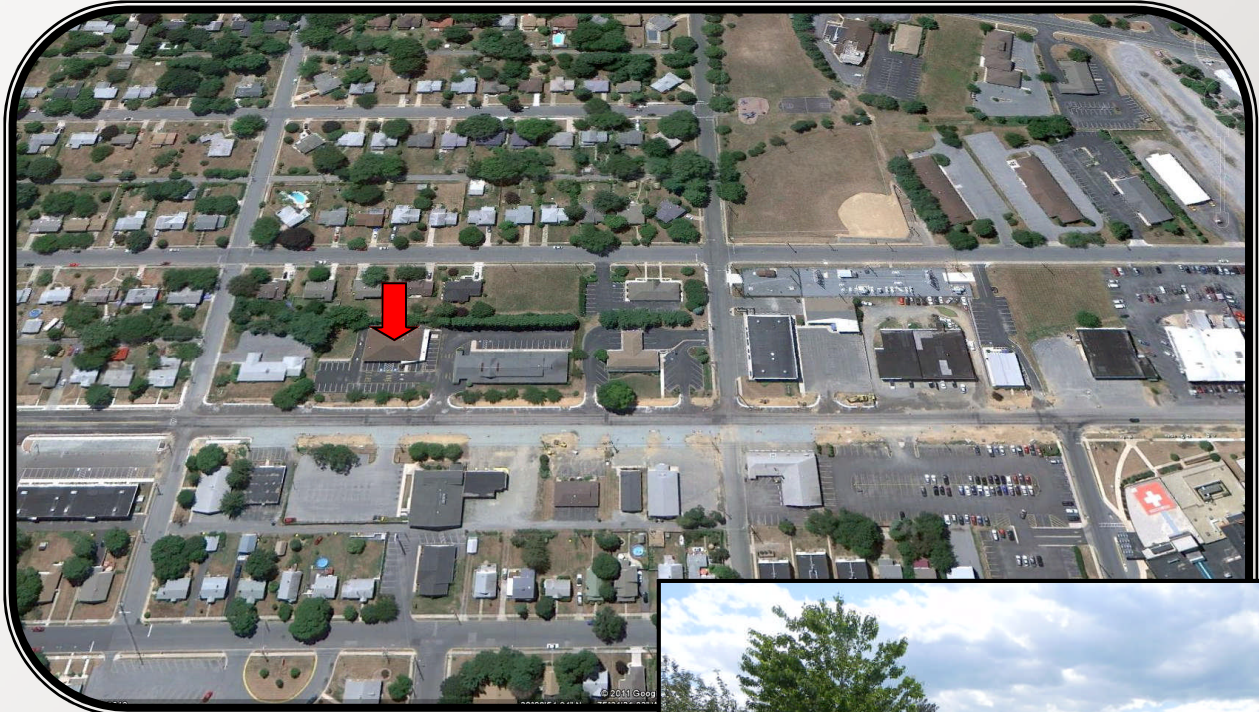




# MEDICAL SPACE FOR LEASE

834 S Governors Avenue

Dover, DE 19904



- Lease Price: \$22.00 psf NNN
- Space Available 5,800+/- SF
- Zoned: C1A
- Traffic Counts: 12,890 AADT 2005

Demographics:	1 Mile	2 Miles	3 Miles
Population 2009	8,110	46,917	72,243
Medium Income 2009	49,884	45,753	46,669



**Charlie Rodriguez**

302-674-3400  
ccrod1@aol.com

46 S State Street  
Dover, DE 19901

302-674-3400 Office  
302-674-8479 Fax

[www.randrcommercialrealty.com](http://www.randrcommercialrealty.com)



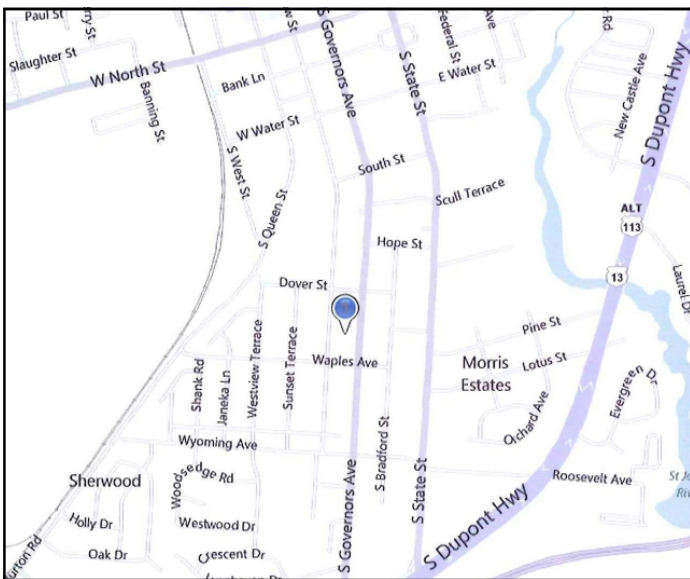
# MEDICAL SPACE FOR LEASE

834 S Governors Avenue

Dover, DE 19904



Previously occupied by Delaware Surgery Center, property is located in closed proximity to Bayhealth Medical Center and Eden Hill. Property consists of .75+/- Acre providing ample parking.



**Charlie Rodriguez**

302-674-3400  
ccrodi@aol.com

46 S State Street  
Dover, DE 19901

302-674-3400 Office  
302-674-8479 Fax  
[www.randrcommercialrealty.com](http://www.randrcommercialrealty.com)

# 834 S Governors Ave

## Floor Plan

